

D. Nordic Competition Equipment Ski Jumping

1. Jumping skis

1.2 Restrictions

1.2.1 Geometric features

1.2.1.1 Ski length

According to the body weight/height relationship ($BMI = \text{body weight} / \text{body height}^2$ in Kg/m^{-2}). See enclosure.

However, the maximum ski length is 145 % of the total body height of the competitor a minimum BMI of 20.5 for Ladies and 21 for Men has to be reached. For athletes with less than minimum BMI a grading table of 0,125 BMI per 0,5 % of ski length will be applied.

Exception:

For Youth competitions, the maximum ski length is limited to 140 % from the body height only (no BMI formula will be applied).

2. Jumping ski bindings

Safety bindings in Ski Jumping function as strain limiters. That is, these devices transfer specific demands occurring during skiing to an acceptable limit, and when this limit is overstepped, they release their firm hold on the ski.

Additional devices creating foreign energy of any kind as an aid to take-off are forbidden.

The complete binding system must be mounted so, that the Ski Jumping shoes are fixed to the skis symmetrically, parallel and centrally to the running direction. After fixing the front part of the jumping shoe into the front part of the binding it must stay fixed and horizontal to the top surface of the ski. The outline of the heel wedge of the shoe sole in its normal production form may not protrude over the side-walls of the Jumping ski.

4. Ski Jumping suits

All portions of the ski jumping suit must be made of the same material (see 4.2) and must show the same air permeability from the outside in and from the inside out.

The suit must close by means of a zipper placed at the centre of the front, which reaches to the collar. The maximum zip length is allowed to the cross part of the crotch. The width of this zipper may not exceed ~~40~~ 15 mm. During the jump the zipper must be completely closed. The design of the suit (seams) must conform to the image "Ski Jumping Suits" in the enclosure.

Additional restrictions

- ~~— For the Ladies Suits (see enclosure): 7 for the torso (upper body above the waist seam): 2 left and 2 right front panels, left and right side panels and back panel. Seam that joins front left 2 parts and front right 2 parts must be in the middle (maximum tolerance of 3 cm).~~
- The waist seam must be placed in relationship to the body within 10 cm above the hip bone (narrow part of the waist). The seam must go around the torso horizontally. ~~Exception for the ladies suits: the waist seam must be placed in relationship to the body within 5 cm above and 5 cm under the hip bone.~~

Additional specifications for the Ladies Ski Jumping suit:

- Side parts (Pos. 4 and Pos. 7)
Both the side parts end at the height of the athlete's knee (both parts end at the same height). The tolerance for the end of both parts, above and below the knee, is +/- 15 cm. The front seam from the side part 7 must run over the middle part of the breast.
- Upper front parts (Pos 1)
The upper and lower areas of front part 1 (Position A1 and A2 on the sketches) must have a width of at least 10 cm.
- Back parts (Pos 6 and Pos. 8)
The waist seam between the back parts must be located at the smallest position of the waist and must be straight.
- Front parts (Pos 1 and Pos 2)
The seam between part 1 and part 2 must start at least 10 cm lower (+/- 2 cm tolerance) than the waist seam on the backside. The end of the seam in the middle must end 6 cm lower as the start point (+/- 1 cm). Both parts of the seam (Pos 1) must end at the same height.
- Front and back parts (Pos 2 and Pos. 6)
The parts 2 and 6 must be at least 10 cm wide at every position.

Masstabelle für Skilänge und Gewicht - BMI 21 - gültig ab Sommer 2011 (Herren)

Measurement table for ski length and weight - BMI 21 - valid from Summer 2011 (Men)

Körpergröße Body Height	A		B		C		D		E		F		G		H		I		J		K	
	Gewicht mit Anzug und Schuhen	Skilänge	Gewicht mit Anzug und Schuhen	Skilänge	Gewicht mit Anzug und Schuhen	Skilänge	Gewicht mit Anzug und Schuhen	Skilänge	Gewicht mit Anzug und Schuhen	Skilänge	Gewicht mit Anzug und Schuhen	Skilänge	Gewicht mit Anzug und Schuhen	Skilänge	Gewicht mit Anzug und Schuhen	Skilänge	Gewicht mit Anzug und Schuhen	Skilänge	Gewicht mit Anzug und Schuhen	Skilänge	Gewicht mit Anzug und Schuhen	Skilänge
BMI / %	21.000	145.0	20.875	144.5	20.750	144.0	20.625	143.5	20.500	143.0	20.375	142.5	20.250	142.0	20.125	141.5	20.000	141.0	19.875	140.5	19.750	140.0
cm	kg	cm	kg	cm	kg	cm	kg	cm	kg	cm	kg	cm	kg	cm	kg	cm	kg	cm	kg	cm	kg	cm
140	41.2	203	40.9	202	40.7	202	40.4	201	40.2	200	39.9	200	39.7	199	39.4	198	39.2	197	39.0	197	38.7	196
141	41.8	204	41.5	204	41.3	203	41.0	202	40.8	202	40.5	201	40.3	200	40.0	200	39.8	199	39.5	198	39.3	197
142	42.3	206	42.1	205	41.8	204	41.6	204	41.3	203	41.1	202	40.8	202	40.6	201	40.3	200	40.1	200	39.8	199
143	42.9	207	42.7	207	42.4	206	42.2	205	41.9	204	41.7	204	41.4	203	41.2	202	40.9	202	40.6	201	40.4	200
144	43.5	209	43.3	208	43.0	207	42.8	207	42.5	206	42.2	205	42.0	204	41.7	204	41.5	203	41.2	202	41.0	202
145	44.2	210	43.9	210	43.6	209	43.4	208	43.1	207	42.8	207	42.6	206	42.3	205	42.1	204	41.8	204	41.5	203
146	44.8	212	44.5	211	44.2	210	44.0	210	43.7	209	43.4	208	43.2	207	42.9	207	42.6	206	42.4	205	42.1	204
147	45.4	213	45.1	212	44.8	212	44.6	211	44.3	210	44.0	209	43.8	209	43.5	208	43.2	207	42.9	207	42.7	206
148	46.0	215	45.7	214	45.5	213	45.2	212	44.9	212	44.6	211	44.4	210	44.1	209	43.8	209	43.5	208	43.3	207
149	46.6	216	46.3	215	46.1	215	45.8	214	45.5	213	45.2	212	45.0	212	44.7	211	44.4	210	44.1	209	43.8	209
150	47.3	218	47.0	217	46.7	216	46.4	215	46.1	215	45.8	214	45.6	213	45.3	212	45.0	212	44.7	211	44.4	210
151	47.9	219	47.6	218	47.3	217	47.0	217	46.7	216	46.5	215	46.2	214	45.9	214	45.6	213	45.3	212	45.0	211
152	48.5	220	48.2	220	47.9	219	47.7	218	47.4	217	47.1	217	46.8	216	46.5	215	46.2	214	45.9	214	45.6	213
153	49.2	222	48.9	221	48.6	220	48.3	220	48.0	219	47.7	218	47.4	217	47.1	216	46.8	216	46.5	215	46.2	214
154	49.8	223	49.5	223	49.2	222	48.9	221	48.6	220	48.3	219	48.0	219	47.7	218	47.4	217	47.1	216	46.8	216
155	50.5	225	50.2	224	49.9	223	49.6	222	49.3	222	49.0	221	48.7	220	48.4	219	48.1	219	47.7	218	47.4	217
156	51.1	226	50.8	225	50.5	225	50.2	224	49.9	223	49.6	222	49.3	222	49.0	221	48.7	220	48.4	219	48.1	218
157	51.8	228	51.5	227	51.1	226	50.8	225	50.5	225	50.2	224	49.9	223	49.6	222	49.3	221	49.0	221	48.7	220
158	52.4	229	52.1	228	51.8	228	51.5	227	51.2	226	50.9	225	50.6	224	50.2	224	49.9	223	49.6	222	49.3	221
159	53.1	231	52.8	230	52.5	229	52.1	228	51.8	227	51.5	227	51.2	226	50.9	225	50.6	224	50.2	223	49.9	223
160	53.8	232	53.4	231	53.1	230	52.8	230	52.5	229	52.2	228	51.8	227	51.5	226	51.2	226	50.9	225	50.6	224
161	54.4	233	54.1	233	53.8	232	53.5	231	53.1	230	52.8	229	52.5	229	52.2	228	51.8	227	51.5	226	51.2	225
162	55.1	235	54.8	234	54.5	233	54.1	232	53.8	232	53.5	231	53.1	230	52.8	229	52.5	228	52.2	228	51.8	227
163	55.8	236	55.5	236	55.1	235	54.8	234	54.5	233	54.1	232	53.8	231	53.5	231	53.1	230	52.8	229	52.5	228
164	56.5	238	56.1	237	55.8	236	55.5	235	55.1	235	54.8	234	54.5	233	54.1	232	53.8	231	53.5	230	53.1	230
165	57.2	239	56.8	238	56.5	238	56.2	237	55.8	236	55.5	235	55.1	234	54.8	233	54.5	233	54.1	232	53.8	231
166	57.9	241	57.5	240	57.2	239	56.8	238	56.5	237	56.1	237	55.8	236	55.5	235	55.1	234	54.8	233	54.4	232
167	58.6	242	58.2	241	57.9	240	57.5	240	57.2	239	56.8	238	56.5	237	56.1	236	55.8	235	55.4	235	55.1	234
168	59.3	244	58.9	243	58.6	242	58.2	241	57.9	240	57.5	239	57.2	239	56.8	238	56.4	237	56.1	236	55.7	235
169	60.0	245	59.6	244	59.3	243	58.9	243	58.6	242	58.2	241	57.8	240	57.5	239	57.1	238	56.8	237	56.4	237
170	60.7	247	60.3	246	60.0	245	59.6	244	59.2	243	58.9	242	58.5	241	58.2	241	57.8	240	57.4	239	57.1	238
171	61.4	248	61.0	247	60.7	246	60.3	245	59.9	245	59.6	244	59.2	243	58.8	242	58.5	241	58.1	240	57.8	239
172	62.1	249	61.8	249	61.4	248	61.0	247	60.6	246	60.3	245	59.9	244	59.5	243	59.2	243	58.8	242	58.4	241
173	62.9	251	62.5	250	62.1	249	61.7	248	61.4	247	61.0	247	60.6	246	60.2	245	59.9	244	59.5	243	59.1	242
174	63.6	252	63.2	251	62.8	251	62.4	250	62.1	249	61.7	248	61.3	247	60.9	246	60.6	245	60.2	244	59.8	244
175	64.3	254	63.9	253	63.5	252	63.2	251	62.8	250	62.4	249	62.0	249	61.6	248	61.3	247	60.9	246	60.5	245
176	65.0	255	64.7	254	64.3	253	63.9	253	63.5	252	63.1	251	62.7	250	62.3	249	62.0	248	61.6	247	61.2	246
177	65.8	257	65.4	256	65.0	255	64.6	254	64.2	253	63.8	252	63.4	251	63.0	250	62.7	250	62.3	249	61.9	248
178	66.5	258	66.1	257	65.7	256	65.3	255	65.0	255	64.6	254	64.2	253	63.8	252	63.4	251	63.0	250	62.6	249
179	67.3	260	66.9	259	66.5	258	66.1	257	65.7	256	65.3	255	64.9	254	64.5	253	64.1	252	63.7	251	63.3	251
180	68.0	261	67.6	260	67.2	259	66.8	258	66.4	257	66.0	257	65.6	256	65.2	255	64.8	254	64.4	253	64.0	252
181	68.8	262	68.4	262	68.0	261	67.6	260	67.2	259	66.8	258	66.3	257	65.9	256	65.5	255	65.1	254	64.7	253
182	69.6	264	69.1	263	68.7	262	68.3	261	67.9	260	67.5	259	67.1	258	66.7	258	66.2	257	65.8	256	65.4	255
183	70.3	265	69.9	264	69.5	264	69.1	263	68.7	262	68.2	261	67.8	260	67.4	259	67.0	258	66.6	257	66.1	256
184	71.1	267	70.7	266	70.3	265	69.8	264	69.4	263	69.0	262	68.6	261	68.1	260	67.7	259	67.3	259	66.9	258
185	71.9	268	71.4	267	71.0	266	70.6	265	70.2	265	69.7	264	69.3	263	68.9	262	68.5	261	68.0	260	67.6	259
186	72.7	270	72.2	269	71.8	268	71.4	267	70.9	266	70.5	265	70.1	264	69.6	263	69.2	262	68.8	261	68.3	260
187	73.4	271	73.0	270	72.6	269	72.1	268	71.7	267	71.2	266	70.8	266	70.4	265	69.9	264	69.5	263	69.1	262
188	74.2	273	73.8	272	73.3	271	72.9	270	72.5	269	72.0	268	71.6	267	71.1	266	70.7	265	70.2	264	69.8	263
189	75.0	274	74.6	273	74.1	272	73.7	271	73.2	270	72.8	269	72.3	268	71.9	267	71.4	266	71.0	266	70.5	265
190	75.8	276	75.4	275	74.9	274	74.5	273	74.0	272	73.6	271	73.1	270	72.7	269	72.2	268	71.7	267	71.3	266
191	76.6	277	76.2	276	75.7	275	75.2	274	74.8	273	74.3	272	73.9	271	73.4	270	73.0	269	72.5	268	72.0	267
192	77.4	278	77.0	277	76.5	276	76.0	276	75.6	275	75.1	274	74.6	273	74.2	272	73.7	271	73.3	270	72.8	269
193	78.2	280	77.8	279	77.3	278	76.8	277	76.4	276	75.9	275	75.4	274	75.0	273	74.5	272	74.0	271	73.6	270
194	79.0	281	78.6	280	78.1	279	77.6	278	77.2	277	76.7	276	76.2	275	75.7	274	75.3	274	74.8	273	74.3	272
195	79.9	283	79.4	282	78.9	281	78.4	280	78.0	279	77.5	278	77.0	277	76.5	276	76.1	275	75.6	274	75.1	273
196	80.7	284	80.2	283	79.7	282	79.2	281	78.8	280	78.3	279	77.8	278								

L		M		N		O		P		Q		R		S		T		U		V		Z	
Gewicht mit Anzug und Schuhen	Skilänge	Gewicht mit Anzug und Schuhen	Skilänge	Gewicht mit Anzug und Schuhen	Skilänge	Gewicht mit Anzug und Schuhen	Skilänge	Gewicht mit Anzug und Schuhen	Skilänge	Gewicht mit Anzug und Schuhen	Skilänge	Gewicht mit Anzug und Schuhen	Skilänge	Gewicht mit Anzug und Schuhen	Skilänge	Gewicht mit Anzug und Schuhen	Skilänge	Gewicht mit Anzug und Schuhen	Skilänge	Gewicht mit Anzug und Schuhen	Skilänge	Gewicht mit Anzug und Schuhen	Skilänge
Weight with suit and boots	Ski length	Weight with suit and boots	Ski length	Weight with suit and boots	Ski length	Weight with suit and boots	Ski length	Weight with suit and boots	Ski length	Weight with suit and boots	Ski length	Weight with suit and boots	Ski length	Weight with suit and boots	Ski length	Weight with suit and boots	Ski length	Weight with suit and boots	Ski length	Weight with suit and boots	Ski length	Weight with suit and boots	Ski length
19.625	139.5	19.500	139.0	19.375	138.5	19.250	138.0	19.125	137.5	19.000	137.0	18.875	136.5	18.750	136.0	18.625	135.5	18.500	135.0	18.375	134.5	18.250	134.0
kg	cm	kg	cm	kg	cm	kg	cm	kg	cm	kg	cm	kg	cm	kg	cm	kg	cm	kg	cm	kg	cm	kg	cm
38.5	195	38.2	195	38.0	194	37.7	193	37.5	193	37.2	192	37.0	191	36.8	190	36.5	190	36.3	189	36.0	188	35.8	188
39.0	197	38.8	196	38.5	195	38.3	195	38.0	194	37.8	193	37.5	192	37.3	192	37.0	191	36.8	190	36.5	190	36.3	189
39.6	198	39.3	197	39.1	197	38.8	196	38.6	195	38.3	195	38.1	194	37.8	193	37.6	192	37.3	192	37.1	191	36.8	190
40.1	199	39.9	199	39.6	198	39.4	197	39.1	197	38.9	196	38.6	195	38.3	194	38.1	194	37.8	193	37.6	192	37.3	192
40.7	201	40.4	200	40.2	199	39.9	199	39.7	198	39.4	197	39.1	197	38.9	196	38.6	195	38.4	194	38.1	194	37.8	193
41.3	202	41.0	202	40.7	201	40.5	200	40.2	199	39.9	199	39.7	198	39.4	197	39.2	196	38.9	196	38.6	195	38.4	194
41.8	204	41.6	203	41.3	202	41.0	201	40.8	201	40.5	200	40.2	199	40.0	199	39.7	198	39.4	197	39.2	196	38.9	196
42.4	205	42.1	204	41.9	204	41.6	203	41.3	202	41.1	201	40.8	201	40.5	200	40.2	199	40.0	198	39.7	198	39.4	197
43.0	206	42.7	206	42.4	205	42.2	204	41.9	204	41.6	203	41.3	202	41.1	201	40.8	201	40.5	200	40.2	199	40.0	198
43.6	208	43.3	207	43.0	206	42.7	206	42.5	205	42.2	204	41.9	203	41.6	203	41.3	202	41.1	201	40.8	200	40.5	200
44.2	209	43.9	209	43.6	208	43.3	207	43.0	206	42.8	206	42.5	205	42.2	204	41.9	203	41.6	203	41.3	202	41.1	201
44.7	211	44.5	210	44.2	209	43.9	208	43.6	208	43.3	207	43.0	206	42.8	205	42.5	205	42.2	204	41.9	203	41.6	202
45.3	212	45.1	211	44.8	211	44.5	210	44.2	209	43.9	208	43.6	207	43.3	207	43.0	206	42.7	205	42.5	204	42.2	204
45.9	213	45.6	213	45.4	212	45.1	211	44.8	210	44.5	210	44.2	209	43.9	208	43.6	207	43.3	207	43.0	206	42.7	205
46.5	215	46.2	214	45.9	213	45.7	213	45.4	212	45.1	211	44.8	210	44.5	209	44.2	209	43.9	208	43.6	207	43.3	206
47.1	216	46.8	215	46.5	215	46.2	214	45.9	213	45.6	212	45.3	212	45.0	211	44.7	210	44.4	209	44.1	208	43.8	208
47.8	218	47.5	217	47.2	216	46.8	215	46.5	215	46.2	214	45.9	213	45.6	212	45.3	211	45.0	211	44.7	210	44.4	209
48.4	219	48.1	218	47.8	217	47.4	217	47.1	216	46.8	215	46.5	214	46.2	214	45.9	213	45.6	212	45.3	211	45.0	210
49.0	220	48.7	220	48.4	219	48.1	218	47.7	217	47.4	216	47.1	216	46.8	215	46.5	214	46.2	213	45.9	213	45.6	212
49.6	222	49.3	221	49.0	220	48.7	219	48.3	219	48.0	218	47.7	217	47.4	216	47.1	215	46.8	215	46.5	214	46.1	213
50.2	223	49.9	222	49.6	222	49.3	221	49.0	220	48.6	219	48.3	218	48.0	218	47.7	217	47.4	216	47.0	215	46.7	214
50.9	225	50.5	224	50.2	223	49.9	222	49.6	221	49.2	221	48.9	220	48.6	219	48.3	218	48.0	217	47.6	217	47.3	216
51.5	226	51.2	225	50.8	224	50.5	224	50.2	223	49.9	222	49.5	221	49.2	220	48.9	220	48.6	219	48.2	218	47.9	217
52.1	227	51.8	227	51.5	226	51.1	225	50.8	224	50.5	223	50.1	222	49.8	222	49.5	221	49.2	220	48.8	219	48.5	218
52.8	229	52.4	228	52.1	227	51.8	226	51.4	226	51.1	225	50.8	224	50.4	223	50.1	222	49.8	221	49.4	221	49.1	220
53.4	230	53.1	229	52.7	229	52.4	228	52.1	227	51.7	226	51.4	225	51.0	224	50.7	224	50.4	223	50.0	222	49.7	221
54.1	232	53.7	231	53.4	230	53.0	229	52.7	228	52.4	227	52.0	227	51.7	226	51.3	225	51.0	224	50.6	223	50.3	222
54.7	233	54.4	232	54.0	231	53.7	230	53.3	230	53.0	229	52.6	228	52.3	227	51.9	226	51.6	225	51.2	225	50.9	224
55.4	234	55.0	234	54.7	233	54.3	232	54.0	231	53.6	230	53.3	229	52.9	228	52.6	228	52.2	227	51.9	226	51.5	225
56.1	236	55.7	235	55.3	234	55.0	233	54.6	232	54.3	232	53.9	231	53.6	230	53.2	229	52.8	228	52.5	227	52.1	226
56.7	237	56.4	236	56.0	235	55.6	235	55.3	234	54.9	233	54.5	232	54.2	231	53.8	230	53.5	230	53.1	229	52.7	228
57.4	239	57.0	238	56.7	237	56.3	236	55.9	235	55.6	234	55.2	233	54.8	233	54.5	232	54.1	231	53.7	230	53.4	229
58.1	240	57.7	239	57.3	238	56.9	237	56.6	237	56.2	236	55.8	235	55.5	234	55.1	233	54.7	232	54.4	231	54.0	230
58.7	241	58.4	240	58.0	240	57.6	239	57.2	238	56.9	237	56.5	236	56.1	235	55.7	234	55.4	234	55.0	233	54.6	232
59.4	243	59.0	242	58.7	241	58.3	240	57.9	239	57.5	238	57.1	238	56.8	237	56.4	236	56.0	235	55.6	234	55.3	233
60.1	244	59.7	243	59.3	242	59.0	242	58.6	241	58.2	240	57.8	239	57.4	238	57.0	237	56.7	236	56.3	235	55.9	235
60.8	246	60.4	245	60.0	244	59.6	243	59.2	242	58.9	241	58.5	240	58.1	239	57.7	238	57.3	238	56.9	237	56.5	236
61.5	247	61.1	246	60.7	245	60.3	244	59.9	243	59.5	242	59.1	242	58.7	241	58.4	240	58.0	239	57.6	238	57.2	237
62.2	248	61.8	247	61.4	247	61.0	246	60.6	245	60.2	244	59.8	243	59.4	242	59.0	241	58.6	240	58.2	239	57.8	239
62.9	250	62.5	249	62.1	248	61.7	247	61.3	246	60.9	245	60.5	244	60.1	243	59.7	243	59.3	242	58.9	241	58.5	240
63.6	251	63.2	250	62.8	249	62.4	248	62.0	248	61.6	247	61.2	246	60.8	245	60.3	244	59.9	243	59.5	242	59.1	241
64.3	252	63.9	252	63.5	251	63.1	250	62.7	249	62.2	248	61.8	247	61.4	246	61.0	245	60.6	244	60.2	243	59.8	243
65.0	254	64.6	253	64.2	252	63.8	251	63.3	250	62.9	249	62.5	248	62.1	248	61.7	247	61.3	246	60.9	245	60.5	244
65.7	255	65.3	254	64.9	253	64.5	253	64.0	252	63.6	251	63.2	250	62.8	249	62.4	248	62.0	247	61.5	246	61.1	245
66.4	257	66.0	256	65.6	255	65.2	254	64.7	253	64.3	252	63.9	251	63.5	250	63.1	249	62.6	248	62.2	247	61.8	247
67.2	258	66.7	257	66.3	256	65.9	255	65.5	254	65.0	253	64.6	253	64.2	252	63.7	251	63.3	250	62.9	249	62.5	248
67.9	259	67.5	259	67.0	258	66.6	257	66.2	256	65.7	255	65.3	254	64.9	253	64.4	252	64.0	251	63.6	250	63.1	249
68.6	261	68.2	260	67.8	259	67.3	258	66.9	257	66.4	256	66.0	255	65.6	254	65.1	253	64.7	252	64.3	252	63.8	251
69.4	262	68.9	261	68.5	260	68.0	259	67.6	259	67.2	258	66.7	257	66.3	256	65.8	255	65.4	254	64.9	253	64.5	252
70.1	264	69.7	263	69.2	262	68.8	261	68.3	260	67.9	259	67.4	258	67.0	257	66.5	256	66.1	255	65.6	254	65.2	253
70.8	265	70.4	264	69.9	263	69.5	262	69.0	261	68.6	260	68.1	259	67.7	258	67.2	257	66.8	257	66.3	256	65.9	255
71.6	266	71.1	265	70.7	265	70.2	264	69.8	263	69.3	262	68.9	261	68.4	260	67.9	259	67.5	258	67.0	257	66.6	256
72.3	268	71.9	267	71.4	266	71.0	265	70.5	264	70.0	263	69.6	262	69.1	261	68.7	260	68.2	259	67.7	258	67.3	257
73.1	269	72.6	268	72.2	267	71.7	266	71.2	265	70.8	264	70.3											

Measurement table for ski length and weight, as from season 2011/2012 - LADIES

Körpergröße	A		B		C		D		E		F	
	Gewicht mit Anzug und Schuhen	Skilänge	Gewicht mit Anzug und Schuhen	Skilänge	Gewicht mit Anzug und Schuhen	Skilänge	Gewicht mit Anzug und Schuhen	Skilänge	Gewicht mit Anzug und Schuhen	Skilänge	Gewicht mit Anzug und Schuhen	Skilänge
Body Height	Weight with suit and boots	Ski length	Weight with suit and boots	Ski length	Weight with suit and boots	Ski length	Weight with suit and boots	Ski length	Weight with suit and boots	Ski length	Weight with suit and boots	Ski length
BMI / %	20.500	145.0	20.375	144.5	20.250	144.0	20.125	143.5	20.000	143.0	19.875	142.5
cm	kg	cm	kg	cm	kg	cm	kg	cm	kg	cm	kg	cm
140	40.2	203	39.9	202	39.7	202	39.4	201	39.2	200	39.0	200
141	40.8	204	40.5	204	40.3	203	40.0	202	39.8	202	39.5	201
142	41.3	206	41.1	205	40.8	204	40.6	204	40.3	203	40.1	202
143	41.9	207	41.7	207	41.4	206	41.2	205	40.9	204	40.6	204
144	42.5	209	42.2	208	42.0	207	41.7	207	41.5	206	41.2	205
145	43.1	210	42.8	210	42.6	209	42.3	208	42.1	207	41.8	207
146	43.7	212	43.4	211	43.2	210	42.9	210	42.6	209	42.4	208
147	44.3	213	44.0	212	43.8	212	43.5	211	43.2	210	42.9	209
148	44.9	215	44.6	214	44.4	213	44.1	212	43.8	212	43.5	211
149	45.5	216	45.2	215	45.0	215	44.7	214	44.4	213	44.1	212
150	46.1	218	45.8	217	45.6	216	45.3	215	45.0	215	44.7	214
151	46.7	219	46.5	218	46.2	217	45.9	217	45.6	216	45.3	215
152	47.4	220	47.1	220	46.8	219	46.5	218	46.2	217	45.9	217
153	48.0	222	47.7	221	47.4	220	47.1	220	46.8	219	46.5	218
154	48.6	223	48.3	223	48.0	222	47.7	221	47.4	220	47.1	219
155	49.3	225	49.0	224	48.7	223	48.4	222	48.1	222	47.7	221
156	49.9	226	49.6	225	49.3	225	49.0	224	48.7	223	48.4	222
157	50.5	228	50.2	227	49.9	226	49.6	225	49.3	225	49.0	224
158	51.2	229	50.9	228	50.6	228	50.2	227	49.9	226	49.6	225
159	51.8	231	51.5	230	51.2	229	50.9	228	50.6	227	50.2	227
160	52.5	232	52.2	231	51.8	230	51.5	230	51.2	229	50.9	228
161	53.1	233	52.8	233	52.5	232	52.2	231	51.8	230	51.5	229
162	53.8	235	53.5	234	53.1	233	52.8	232	52.5	232	52.2	231
163	54.5	236	54.1	236	53.8	235	53.5	234	53.1	233	52.8	232
164	55.1	238	54.8	237	54.5	236	54.1	235	53.8	235	53.5	234
165	55.8	239	55.5	238	55.1	238	54.8	237	54.5	236	54.1	235
166	56.5	241	56.1	240	55.8	239	55.5	238	55.1	237	54.8	237
167	57.2	242	56.8	241	56.5	240	56.1	240	55.8	239	55.4	238
168	57.9	244	57.5	243	57.2	242	56.8	241	56.4	240	56.1	239
169	58.6	245	58.2	244	57.8	243	57.5	243	57.1	242	56.8	241
170	59.2	247	58.9	246	58.5	245	58.2	244	57.8	243	57.4	242
171	59.9	248	59.6	247	59.2	246	58.8	245	58.5	245	58.1	244
172	60.6	249	60.3	249	59.9	248	59.5	247	59.2	246	58.8	245
173	61.4	251	61.0	250	60.6	249	60.2	248	59.9	247	59.5	247
174	62.1	252	61.7	251	61.3	251	60.9	250	60.6	249	60.2	248
175	62.8	254	62.4	253	62.0	252	61.6	251	61.3	250	60.9	249
176	63.5	255	63.1	254	62.7	253	62.3	253	62.0	252	61.6	251
177	64.2	257	63.8	256	63.4	255	63.0	254	62.7	253	62.3	252
178	65.0	258	64.6	257	64.2	256	63.8	255	63.4	255	63.0	254
179	65.7	260	65.3	259	64.9	258	64.5	257	64.1	256	63.7	255
180	66.4	261	66.0	260	65.6	259	65.2	258	64.8	257	64.4	257
181	67.2	262	66.8	262	66.3	261	65.9	260	65.5	259	65.1	258
182	67.9	264	67.5	263	67.1	262	66.7	261	66.2	260	65.8	259
183	68.7	265	68.2	264	67.8	264	67.4	263	67.0	262	66.6	261
184	69.4	267	69.0	266	68.6	265	68.1	264	67.7	263	67.3	262
185	70.2	268	69.7	267	69.3	266	68.9	265	68.5	265	68.0	264
186	70.9	270	70.5	269	70.1	268	69.6	267	69.2	266	68.8	265
187	71.7	271	71.2	270	70.8	269	70.4	268	69.9	267	69.5	266
188	72.5	273	72.0	272	71.6	271	71.1	270	70.7	269	70.2	268
189	73.2	274	72.8	273	72.3	272	71.9	271	71.4	270	71.0	269
190	74.0	276	73.6	275	73.1	274	72.7	273	72.2	272	71.7	271
191	74.8	277	74.3	276	73.9	275	73.4	274	73.0	273	72.5	272
192	75.6	278	75.1	277	74.6	276	74.2	276	73.7	275	73.3	274
193	76.4	280	75.9	279	75.4	278	75.0	277	74.5	276	74.0	275
194	77.2	281	76.7	280	76.2	279	75.7	278	75.3	277	74.8	276
195	78.0	283	77.5	282	77.0	281	76.5	280	76.1	279	75.6	278
196	78.8	284	78.3	283	77.8	282	77.3	281	76.8	280	76.4	279
197	79.6	286	79.1	285	78.6	284	78.1	283	77.6	282	77.1	281
198	80.4	287	79.9	286	79.4	285	78.9	284	78.4	283	77.9	282
199	81.2	289	80.7	288	80.2	287	79.7	286	79.2	285	78.7	284
200	82.0	290	81.5	289	81.0	288	80.5	287	80.0	286	79.5	285

Specifications for Competition Equipment Edition 2011/12

	G		H		I		J		K		L	
Körpergrösse	Gewicht mit Anzug und Schuhen	Skilänge	Gewicht mit Anzug und Schuhen	Skilänge	Gewicht mit Anzug und Schuhen	Skilänge	Gewicht mit Anzug und Schuhen	Skilänge	Gewicht mit Anzug und Schuhen	Skilänge	Gewicht mit Anzug und Schuhen	Skilänge
Body Height	Weight with suit and boots	Ski length	Weight with suit and boots	Ski length	Weight with suit and boots	Ski length	Weight with suit and boots	Ski length	Weight with suit and boots	Ski length	Weight with suit and boots	Ski length
BMI / %	19.750	142.0	19.625	141.5	19.500	141.0	19.375	140.5	19.250	140.0	19.125	139.5
cm	kg	cm	kg	cm	kg	cm	kg	cm	kg	cm	kg	cm
140	38.7	199	38.5	198	38.2	197	38.0	197	37.7	196	37.5	195
141	39.3	200	39.0	200	38.8	199	38.5	198	38.3	197	38.0	197
142	39.8	202	39.6	201	39.3	200	39.1	200	38.8	199	38.6	198
143	40.4	203	40.1	202	39.9	202	39.6	201	39.4	200	39.1	199
144	41.0	204	40.7	204	40.4	203	40.2	202	39.9	202	39.7	201
145	41.5	206	41.3	205	41.0	204	40.7	204	40.5	203	40.2	202
146	42.1	207	41.8	207	41.6	206	41.3	205	41.0	204	40.8	204
147	42.7	209	42.4	208	42.1	207	41.9	207	41.6	206	41.3	205
148	43.3	210	43.0	209	42.7	209	42.4	208	42.2	207	41.9	206
149	43.8	212	43.6	211	43.3	210	43.0	209	42.7	209	42.5	208
150	44.4	213	44.2	212	43.9	212	43.6	211	43.3	210	43.0	209
151	45.0	214	44.7	214	44.5	213	44.2	212	43.9	211	43.6	211
152	45.6	216	45.3	215	45.1	214	44.8	214	44.5	213	44.2	212
153	46.2	217	45.9	216	45.6	216	45.4	215	45.1	214	44.8	213
154	46.8	219	46.5	218	46.2	217	45.9	216	45.7	216	45.4	215
155	47.4	220	47.1	219	46.8	219	46.5	218	46.2	217	45.9	216
156	48.1	222	47.8	221	47.5	220	47.2	219	46.8	218	46.5	218
157	48.7	223	48.4	222	48.1	221	47.8	221	47.4	220	47.1	219
158	49.3	224	49.0	224	48.7	223	48.4	222	48.1	221	47.7	220
159	49.9	226	49.6	225	49.3	224	49.0	223	48.7	223	48.3	222
160	50.6	227	50.2	226	49.9	226	49.6	225	49.3	224	49.0	223
161	51.2	229	50.9	228	50.5	227	50.2	226	49.9	225	49.6	225
162	51.8	230	51.5	229	51.2	228	50.8	228	50.5	227	50.2	226
163	52.5	231	52.1	231	51.8	230	51.5	229	51.1	228	50.8	227
164	53.1	233	52.8	232	52.4	231	52.1	230	51.8	230	51.4	229
165	53.8	234	53.4	233	53.1	233	52.7	232	52.4	231	52.1	230
166	54.4	236	54.1	235	53.7	234	53.4	233	53.0	232	52.7	232
167	55.1	237	54.7	236	54.4	235	54.0	235	53.7	234	53.3	233
168	55.7	239	55.4	238	55.0	237	54.7	236	54.3	235	54.0	234
169	56.4	240	56.1	239	55.7	238	55.3	237	55.0	237	54.6	236
170	57.1	241	56.7	241	56.4	240	56.0	239	55.6	238	55.3	237
171	57.8	243	57.4	242	57.0	241	56.7	240	56.3	239	55.9	239
172	58.4	244	58.1	243	57.7	243	57.3	242	56.9	241	56.6	240
173	59.1	246	58.7	245	58.4	244	58.0	243	57.6	242	57.2	241
174	59.8	247	59.4	246	59.0	245	58.7	244	58.3	244	57.9	243
175	60.5	249	60.1	248	59.7	247	59.3	246	59.0	245	58.6	244
176	61.2	250	60.8	249	60.4	248	60.0	247	59.6	246	59.2	246
177	61.9	251	61.5	250	61.1	250	60.7	249	60.3	248	59.9	247
178	62.6	253	62.2	252	61.8	251	61.4	250	61.0	249	60.6	248
179	63.3	254	62.9	253	62.5	252	62.1	251	61.7	251	61.3	250
180	64.0	256	63.6	255	63.2	254	62.8	253	62.4	252	62.0	251
181	64.7	257	64.3	256	63.9	255	63.5	254	63.1	253	62.7	252
182	65.4	258	65.0	258	64.6	257	64.2	256	63.8	255	63.3	254
183	66.1	260	65.7	259	65.3	258	64.9	257	64.5	256	64.0	255
184	66.9	261	66.4	260	66.0	259	65.6	259	65.2	258	64.7	257
185	67.6	263	67.2	262	66.7	261	66.3	260	65.9	259	65.5	258
186	68.3	264	67.9	263	67.5	262	67.0	261	66.6	260	66.2	259
187	69.1	266	68.6	265	68.2	264	67.8	263	67.3	262	66.9	261
188	69.8	267	69.4	266	68.9	265	68.5	264	68.0	263	67.6	262
189	70.5	268	70.1	267	69.7	266	69.2	266	68.8	265	68.3	264
190	71.3	270	70.8	269	70.4	268	69.9	267	69.5	266	69.0	265
191	72.0	271	71.6	270	71.1	269	70.7	268	70.2	267	69.8	266
192	72.8	273	72.3	272	71.9	271	71.4	270	71.0	269	70.5	268
193	73.6	274	73.1	273	72.6	272	72.2	271	71.7	270	71.2	269
194	74.3	275	73.9	275	73.4	274	72.9	273	72.4	272	72.0	271
195	75.1	277	74.6	276	74.1	275	73.7	274	73.2	273	72.7	272
196	75.9	278	75.4	277	74.9	276	74.4	275	74.0	274	73.5	273
197	76.6	280	76.2	279	75.7	278	75.2	277	74.7	276	74.2	275
198	77.4	281	76.9	280	76.4	279	76.0	278	75.5	277	75.0	276
199	78.2	283	77.7	282	77.2	281	76.7	280	76.2	279	75.7	278
200	79.0	284	78.5	283	78.0	282	77.5	281	77.0	280	76.5	279

Specifications for Competition Equipment Edition 2011/12

Körper- grösse	M		N		O		P		Q		R	
	Gewicht mit Anzug und Schuhen	Skilänge	Gewicht mit Anzug und Schuhen	Skilänge	Gewicht mit Anzug und Schuhen	Skilänge	Gewicht mit Anzug und Schuhen	Skilänge	Gewicht mit Anzug und Schuhen	Skilänge	Gewicht mit Anzug und Schuhen	Skilänge
Body Height	Weight with suit and boots	Ski length	Weight with suit and boots	Ski length	Weight with suit and boots	Ski length	Weight with suit and boots	Ski length	Weight with suit and boots	Ski length	Weight with suit and boots	Ski length
BMI / %	19.000	139.0	18.875	138.5	18.750	138.0	18.625	137.5	18.500	137.0	18.375	136.5
cm	kg	cm	kg	cm	kg	cm	kg	cm	kg	cm	kg	cm
140	37.2	195	37.0	194	36.8	193	36.5	193	36.3	192	36.0	191
141	37.8	196	37.5	195	37.3	195	37.0	194	36.8	193	36.5	192
142	38.3	197	38.1	197	37.8	196	37.6	195	37.3	195	37.1	194
143	38.9	199	38.6	198	38.3	197	38.1	197	37.8	196	37.6	195
144	39.4	200	39.1	199	38.9	199	38.6	198	38.4	197	38.1	197
145	39.9	202	39.7	201	39.4	200	39.2	199	38.9	199	38.6	198
146	40.5	203	40.2	202	40.0	201	39.7	201	39.4	200	39.2	199
147	41.1	204	40.8	204	40.5	203	40.2	202	40.0	201	39.7	201
148	41.6	206	41.3	205	41.1	204	40.8	204	40.5	203	40.2	202
149	42.2	207	41.9	206	41.6	206	41.3	205	41.1	204	40.8	203
150	42.8	209	42.5	208	42.2	207	41.9	206	41.6	206	41.3	205
151	43.3	210	43.0	209	42.8	208	42.5	208	42.2	207	41.9	206
152	43.9	211	43.6	211	43.3	210	43.0	209	42.7	208	42.5	207
153	44.5	213	44.2	212	43.9	211	43.6	210	43.3	210	43.0	209
154	45.1	214	44.8	213	44.5	213	44.2	212	43.9	211	43.6	210
155	45.6	215	45.3	215	45.0	214	44.7	213	44.4	212	44.1	212
156	46.2	217	45.9	216	45.6	215	45.3	215	45.0	214	44.7	213
157	46.8	218	46.5	217	46.2	217	45.9	216	45.6	215	45.3	214
158	47.4	220	47.1	219	46.8	218	46.5	217	46.2	216	45.9	216
159	48.0	221	47.7	220	47.4	219	47.1	219	46.8	218	46.5	217
160	48.6	222	48.3	222	48.0	221	47.7	220	47.4	219	47.0	218
161	49.2	224	48.9	223	48.6	222	48.3	221	48.0	221	47.6	220
162	49.9	225	49.5	224	49.2	224	48.9	223	48.6	222	48.2	221
163	50.5	227	50.1	226	49.8	225	49.5	224	49.2	223	48.8	222
164	51.1	228	50.8	227	50.4	226	50.1	226	49.8	225	49.4	224
165	51.7	229	51.4	229	51.0	228	50.7	227	50.4	226	50.0	225
166	52.4	231	52.0	230	51.7	229	51.3	228	51.0	227	50.6	227
167	53.0	232	52.6	231	52.3	230	51.9	230	51.6	229	51.2	228
168	53.6	234	53.3	233	52.9	232	52.6	231	52.2	230	51.9	229
169	54.3	235	53.9	234	53.6	233	53.2	232	52.8	232	52.5	231
170	54.9	236	54.5	235	54.2	235	53.8	234	53.5	233	53.1	232
171	55.6	238	55.2	237	54.8	236	54.5	235	54.1	234	53.7	233
172	56.2	239	55.8	238	55.5	237	55.1	237	54.7	236	54.4	235
173	56.9	240	56.5	240	56.1	239	55.7	238	55.4	237	55.0	236
174	57.5	242	57.1	241	56.8	240	56.4	239	56.0	238	55.6	238
175	58.2	243	57.8	242	57.4	242	57.0	241	56.7	240	56.3	239
176	58.9	245	58.5	244	58.1	243	57.7	242	57.3	241	56.9	240
177	59.5	246	59.1	245	58.7	244	58.4	243	58.0	242	57.6	242
178	60.2	247	59.8	247	59.4	246	59.0	245	58.6	244	58.2	243
179	60.9	249	60.5	248	60.1	247	59.7	246	59.3	245	58.9	244
180	61.6	250	61.2	249	60.8	248	60.3	248	59.9	247	59.5	246
181	62.2	252	61.8	251	61.4	250	61.0	249	60.6	248	60.2	247
182	62.9	253	62.5	252	62.1	251	61.7	250	61.3	249	60.9	248
183	63.6	254	63.2	253	62.8	253	62.4	252	62.0	251	61.5	250
184	64.3	256	63.9	255	63.5	254	63.1	253	62.6	252	62.2	251
185	65.0	257	64.6	256	64.2	255	63.7	254	63.3	253	62.9	253
186	65.7	259	65.3	258	64.9	257	64.4	256	64.0	255	63.6	254
187	66.4	260	66.0	259	65.6	258	65.1	257	64.7	256	64.3	255
188	67.2	261	66.7	260	66.3	259	65.8	259	65.4	258	64.9	257
189	67.9	263	67.4	262	67.0	261	66.5	260	66.1	259	65.6	258
190	68.6	264	68.1	263	67.7	262	67.2	261	66.8	260	66.3	259
191	69.3	265	68.9	265	68.4	264	67.9	263	67.5	262	67.0	261
192	70.0	267	69.6	266	69.1	265	68.7	264	68.2	263	67.7	262
193	70.8	268	70.3	267	69.8	266	69.4	265	68.9	264	68.4	263
194	71.5	270	71.0	269	70.6	268	70.1	267	69.6	266	69.2	265
195	72.2	271	71.8	270	71.3	269	70.8	268	70.3	267	69.9	266
196	73.0	272	72.5	271	72.0	270	71.5	270	71.1	269	70.6	268
197	73.7	274	73.3	273	72.8	272	72.3	271	71.8	270	71.3	269
198	74.5	275	74.0	274	73.5	273	73.0	272	72.5	271	72.0	270
199	75.2	277	74.7	276	74.3	275	73.8	274	73.3	273	72.8	272
200	76.0	278	75.5	277	75.0	276	74.5	275	74.0	274	73.5	273

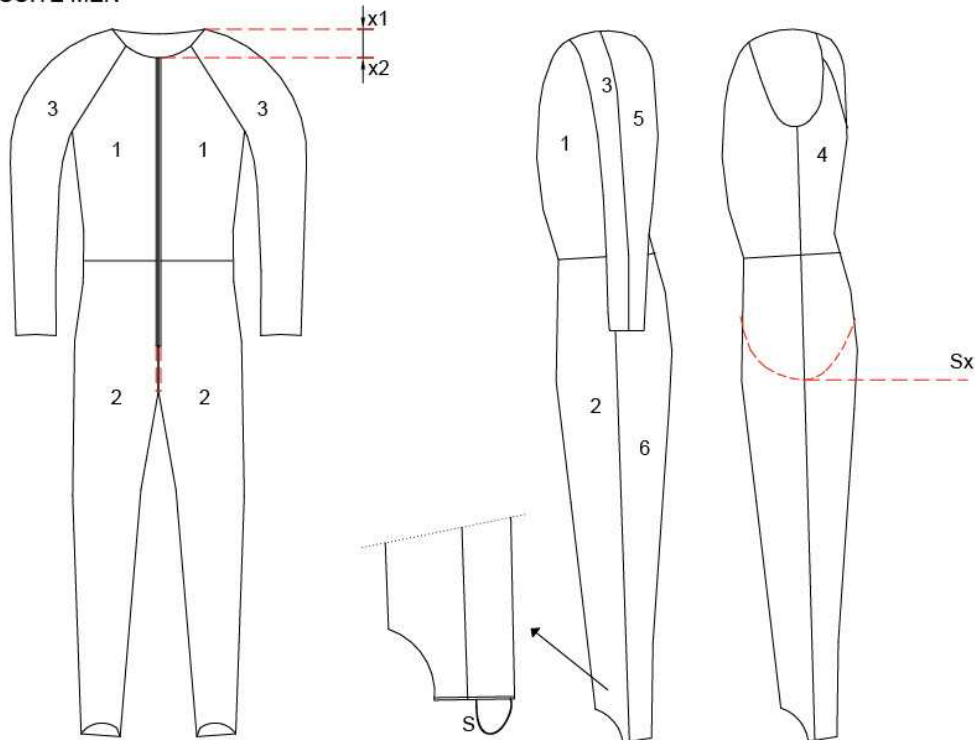
Specifications for Competition Equipment Edition 2011/12

Körpergrösse	S		T		U		V		Z	
	Gewicht mit Anzug und Schuhen	Skilänge	Gewicht mit Anzug und Schuhen	Skilänge	Gewicht mit Anzug und Schuhen	Skilänge	Gewicht mit Anzug und Schuhen	Skilänge	Gewicht mit Anzug und Schuhen	Skilänge
Body Height	Weight with suit and boots	Ski length	Weight with suit and boots	Ski length	Weight with suit and boots	Ski length	Weight with suit and boots	Ski length	Weight with suit and boots	Ski length
BMI / %	18.250	136.0	18.125	135.5	18.000	135.0	17.875	134.5	17.750	134.0
cm	kg	cm	kg	cm	kg	cm	kg	cm	kg	cm
140	35.8	190	35.5	190	35.3	189	35.0	188	34.8	188
141	36.3	192	36.0	191	35.8	190	35.5	190	35.3	189
142	36.8	193	36.5	192	36.3	192	36.0	191	35.8	190
143	37.3	194	37.1	194	36.8	193	36.6	192	36.3	192
144	37.8	196	37.6	195	37.3	194	37.1	194	36.8	193
145	38.4	197	38.1	196	37.8	196	37.6	195	37.3	194
146	38.9	199	38.6	198	38.4	197	38.1	196	37.8	196
147	39.4	200	39.2	199	38.9	198	38.6	198	38.4	197
148	40.0	201	39.7	201	39.4	200	39.2	199	38.9	198
149	40.5	203	40.2	202	40.0	201	39.7	200	39.4	200
150	41.1	204	40.8	203	40.5	203	40.2	202	39.9	201
151	41.6	205	41.3	205	41.0	204	40.8	203	40.5	202
152	42.2	207	41.9	206	41.6	205	41.3	204	41.0	204
153	42.7	208	42.4	207	42.1	207	41.8	206	41.6	205
154	43.3	209	43.0	209	42.7	208	42.4	207	42.1	206
155	43.8	211	43.5	210	43.2	209	42.9	208	42.6	208
156	44.4	212	44.1	211	43.8	211	43.5	210	43.2	209
157	45.0	214	44.7	213	44.4	212	44.1	211	43.8	210
158	45.6	215	45.2	214	44.9	213	44.6	213	44.3	212
159	46.1	216	45.8	215	45.5	215	45.2	214	44.9	213
160	46.7	218	46.4	217	46.1	216	45.8	215	45.4	214
161	47.3	219	47.0	218	46.7	217	46.3	217	46.0	216
162	47.9	220	47.6	220	47.2	219	46.9	218	46.6	217
163	48.5	222	48.2	221	47.8	220	47.5	219	47.2	218
164	49.1	223	48.7	222	48.4	221	48.1	221	47.7	220
165	49.7	224	49.3	224	49.0	223	48.7	222	48.3	221
166	50.3	226	49.9	225	49.6	224	49.3	223	48.9	222
167	50.9	227	50.5	226	50.2	225	49.9	225	49.5	224
168	51.5	228	51.2	228	50.8	227	50.5	226	50.1	225
169	52.1	230	51.8	229	51.4	228	51.1	227	50.7	226
170	52.7	231	52.4	230	52.0	230	51.7	229	51.3	228
171	53.4	233	53.0	232	52.6	231	52.3	230	51.9	229
172	54.0	234	53.6	233	53.3	232	52.9	231	52.5	230
173	54.6	235	54.2	234	53.9	234	53.5	233	53.1	232
174	55.3	237	54.9	236	54.5	235	54.1	234	53.7	233
175	55.9	238	55.5	237	55.1	236	54.7	235	54.4	235
176	56.5	239	56.1	238	55.8	238	55.4	237	55.0	236
177	57.2	241	56.8	240	56.4	239	56.0	238	55.6	237
178	57.8	242	57.4	241	57.0	240	56.6	239	56.2	239
179	58.5	243	58.1	243	57.7	242	57.3	241	56.9	240
180	59.1	245	58.7	244	58.3	243	57.9	242	57.5	241
181	59.8	246	59.4	245	59.0	244	58.6	243	58.2	243
182	60.5	248	60.0	247	59.6	246	59.2	245	58.8	244
183	61.1	249	60.7	248	60.3	247	59.9	246	59.4	245
184	61.8	250	61.4	249	60.9	248	60.5	247	60.1	247
185	62.5	252	62.0	251	61.6	250	61.2	249	60.7	248
186	63.1	253	62.7	252	62.3	251	61.8	250	61.4	249
187	63.8	254	63.4	253	62.9	252	62.5	252	62.1	251
188	64.5	256	64.1	255	63.6	254	63.2	253	62.7	252
189	65.2	257	64.7	256	64.3	255	63.9	254	63.4	253
190	65.9	258	65.4	257	65.0	257	64.5	256	64.1	255
191	66.6	260	66.1	259	65.7	258	65.2	257	64.8	256
192	67.3	261	66.8	260	66.4	259	65.9	258	65.4	257
193	68.0	262	67.5	262	67.0	261	66.6	260	66.1	259
194	68.7	264	68.2	263	67.7	262	67.3	261	66.8	260
195	69.4	265	68.9	264	68.4	263	68.0	262	67.5	261
196	70.1	267	69.6	266	69.1	265	68.7	264	68.2	263
197	70.8	268	70.3	267	69.9	266	69.4	265	68.9	264
198	71.5	269	71.1	268	70.6	267	70.1	266	69.6	265
199	72.3	271	71.8	270	71.3	269	70.8	268	70.3	267
200	73.0	272	72.5	271	72.0	270	71.5	269	71.0	268

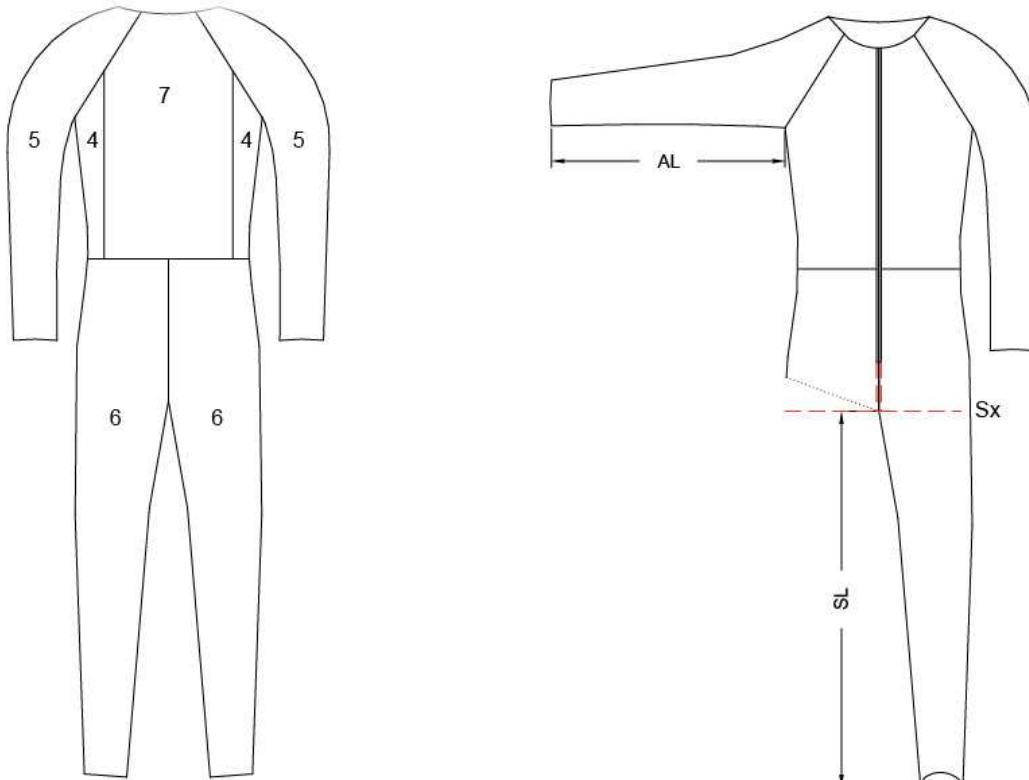
Ski Jumping Suits

Standardized measuring control points and number of parts of material of which the suits consist

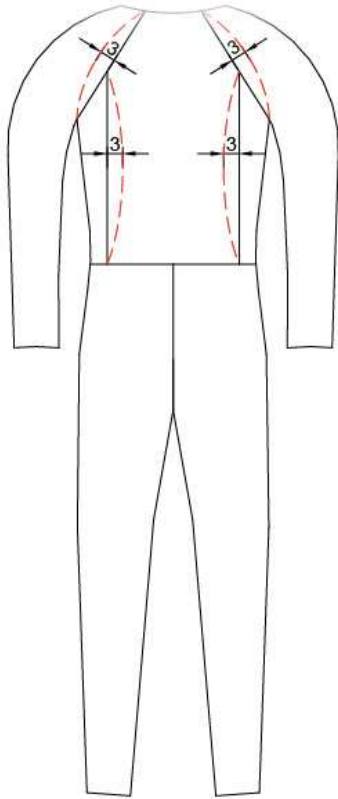
JUMPING SUITE MEN



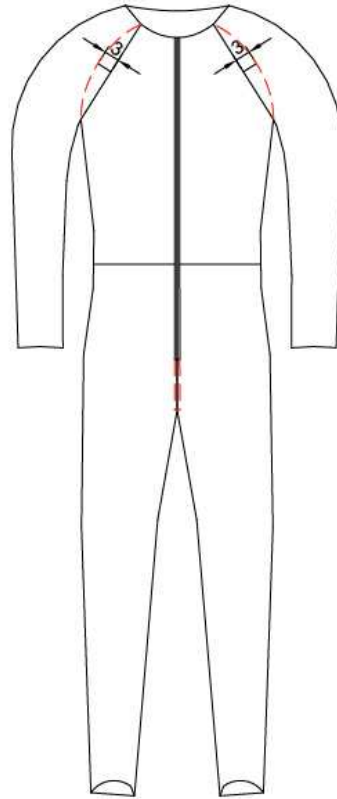
JUMPING SUITE MEN



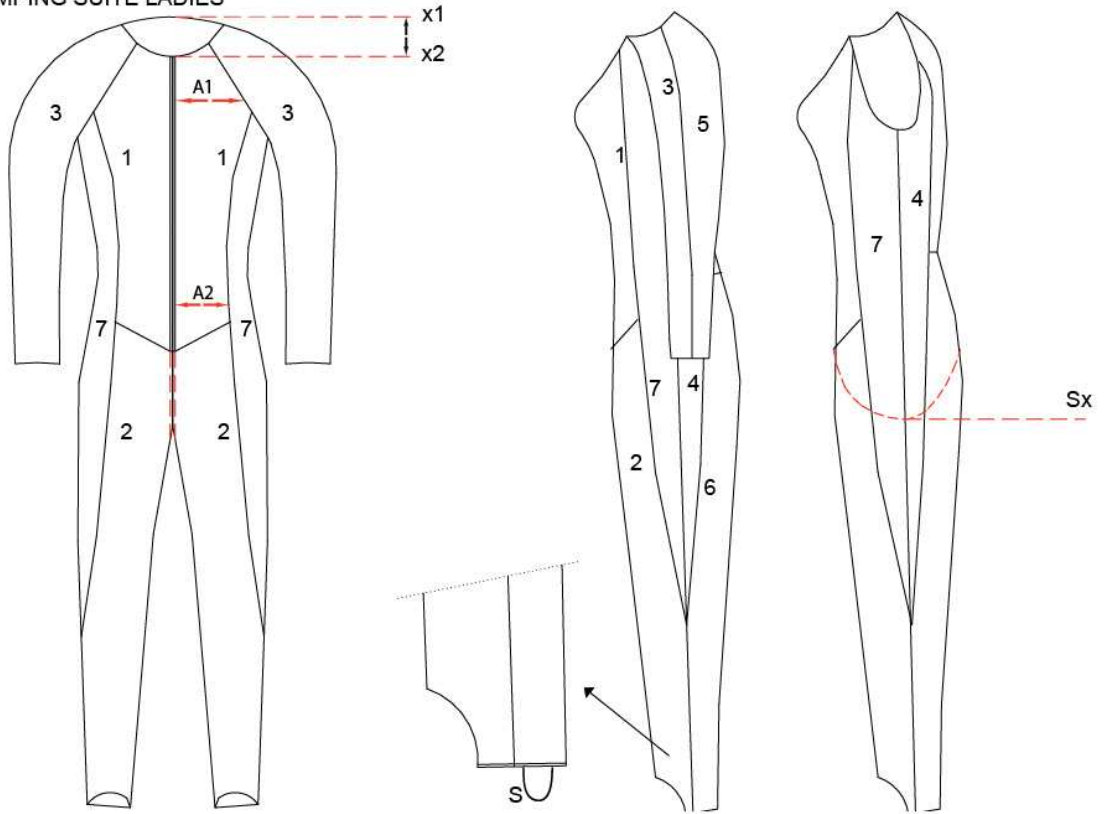
JUMPING SUITE MEN



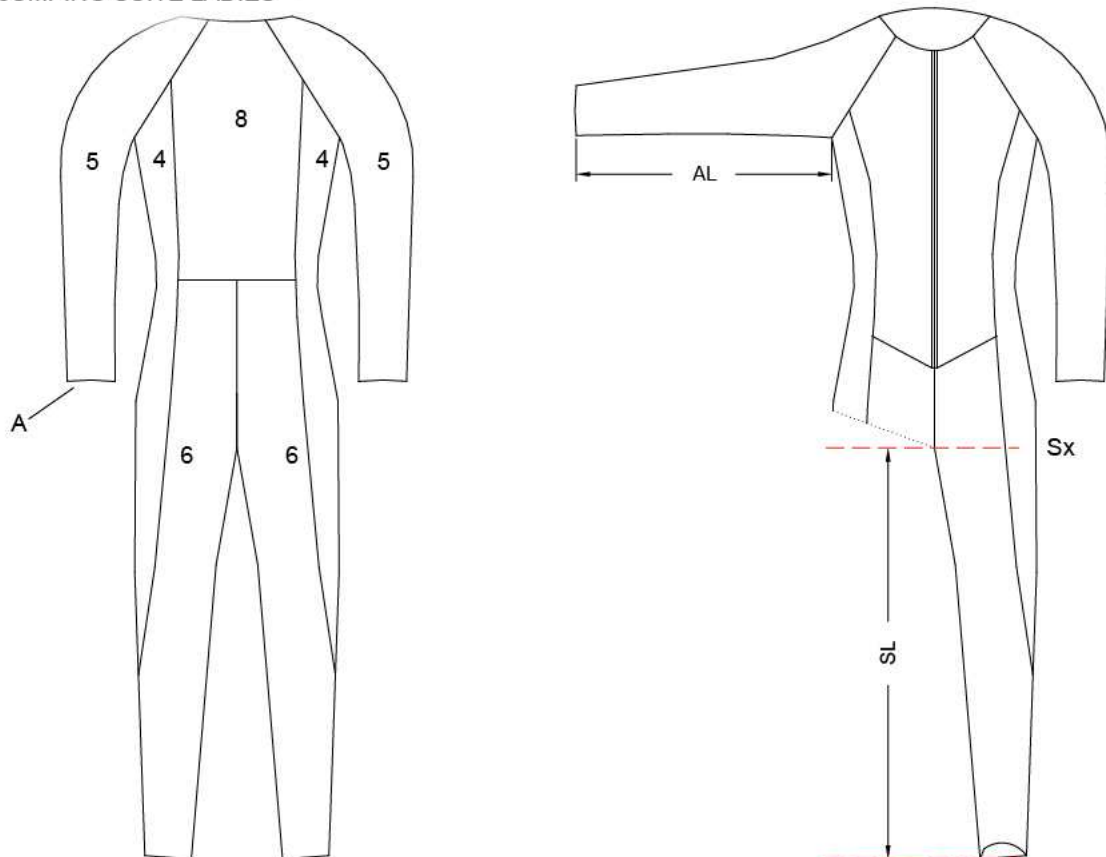
3 = 3cm



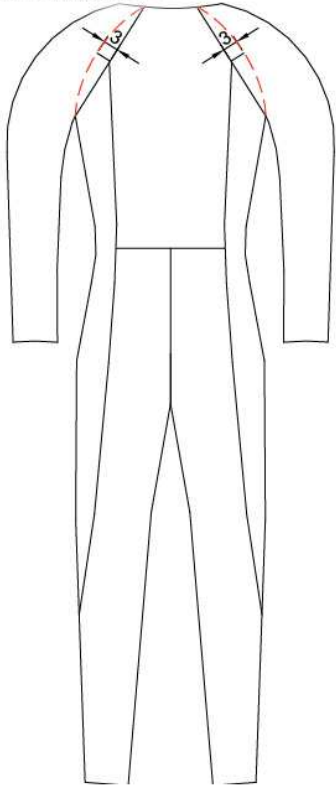
JUMPING SUITE LADIES



JUMPING SUITE LADIES



JUMPING SUITE LADIES



3=3cm

