



FIS – COMPUTER PROGRAMS

I. Introduction

After the restructuring of the Web site and the internal databases of the FIS, it is necessary to likewise update the data and the PC programs that are distributed to the different associations and interested parties throughout the world. The goals for doing this are the following:

- ♦ Use a database that is compatible with many different application systems
- ♦ Simplicity, reliability and ease of installation of the database
- ♦ Use with stand-alone or networked systems
- ♦ Deletion of duplicate data files (ex. Fislist : duplicate competitor files for each discipline on the list)
- ♦ Use of the same data files for all applications (Calendar, FIS List, Race Sites,...)

MYSQL was retained as the database of choice due to a variety of features: Widespread Use, Compatibility with different operating systems, Simple integration into most programming languages, ease of installation, use at no charge, stand-alone or networked configuration.

When first installed by users, you must be aware of the following :

- ♦ Is MYSQL already installed on your system or network ?
- ♦ Do you want to use the database programs on a network system ?

If MYSQL is already installed on your PC or network, you must not try to install it again but rather go directly to point 3 : Installation of FIS Programs.

II. Installation of MYSQL

This procedure must be followed if MYSQL is not already installed on your system

- ♦ Install the MYSQL database remotely from the official website: www.mysql.com or from [ftp.fis.ch/Software/Programs/MySQL](ftp://ftp.fis.ch/Software/Programs/MySQL) and save it to disk. The file '**mysql-xxxxxx-win.exe**' contains the version of MYSQL that is in actual use by the FIS.
- ♦ Run the Executable file (double-click) '**mysql-xxxxxx-win.exe**' from the directory in which it was saved and follow the instructions that appear on the screen. Once completed the MYSQL database will be installed on your system.
- ♦ Once MYSQL is installed, you must initialize the database. To do so, go to the Windows Start menu and execute the following command :

C:\mysql\bin\winmysqladmin.exe

In case you have not done so, installation in a default directory is essential and you must use the following procedure instead.

- ♦ Input your name and password (anything will do)



- ♦ MySQL is now installed.

III. Installation of 'FIS' Program Software

- ♦ Download the required software from the FTP Web Site <ftp.fisiski.ch/Software/Programs> using the directory corresponding to the type of program you need..
- ♦ To install your selected software, double-click the program icon that comes with the download
- ♦ Follow the Instructions that appear on the screen
- ♦ The program can now be started from the Menu **Start-Programs-FIS programs**
- ♦ Before using the program you must first define several basic parameters :



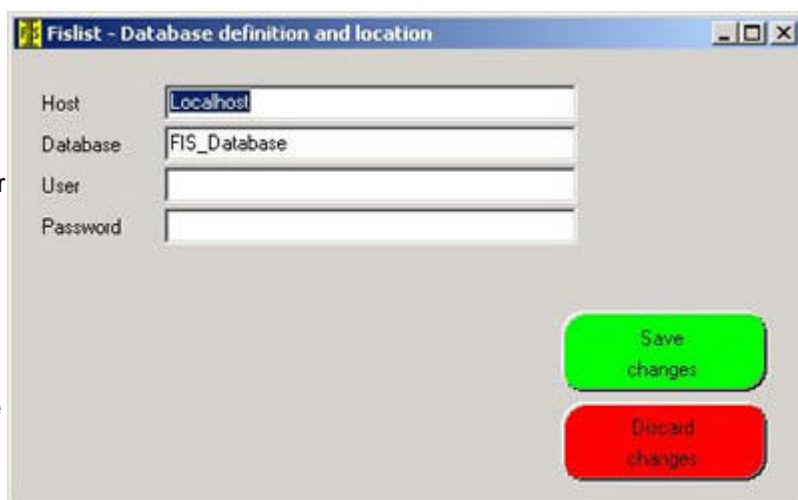
- ♦ Define the location of your MySQL database to start the application (in this example : Fis - Calendar)
- ♦ Select *Setup* then *Database*

Confirm these values as default by clicking on 'Save changes'

If you are using a network you must indicate the name or address of the server that has MySQL in the « Host » Field.

The Database field contains the name of the data base being used by the FIS programs and will be created automatically

- ♦ *User* will eventually be the name of the user that must ultimately be defined by the MySQL administrator
- ♦ *Password* is likewise the password defined by the MySQL administrator



IV. Loading Required FILES for various applications

- ♦ Every application needs data for use. This data can be found on the FIS ftp site at



FEDERATION INTERNATIONALE DE SKI
INTERNATIONAL SKI FEDERATION
INTERNATIONALER SKI VERBAND



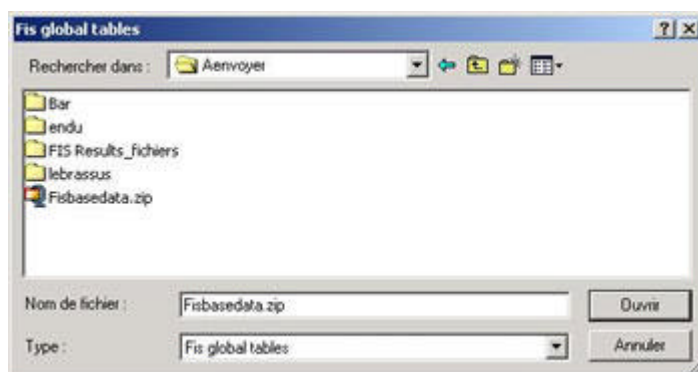
<ftp.fisiski.ch/Software/Files> followed by the name of the directory corresponding to the program application you are running.

- ♦ Only one file can be found in the base directory (<ftp.fisiski.ch/Software/Files>) : **Fisbasedata.zip** This file is used by different FIS programs and contains a series of general defaults and definitions for categories, disciplines etc.
- ♦ When in the 'setup' menu of an application you will find the option *Fis definition files*, This shows that the program will use certain data and therefore you must define which ones they are under the *setup* menu:



When in the 'setup' menu of an application you will see the *Fis definition files* option, this indicates that data will be used by the program and you must load this data by using the *setup* menu:

- ♦ Find the file **Fisbasedata.zip** (it should be in the directory that you saved it to during download) and open it. The required database is now installed for use.



- ♦ Every program that uses external data that was previously downloaded has an '**Update**' button which is used to bring the required database up-to-date.