

Mistrovství České republiky dospělých v běhu na lyžích s mezinárodní účastí pro rok 2008

3.část - závod FIS



Results

Horní Mísečky (1000 m n.m.)

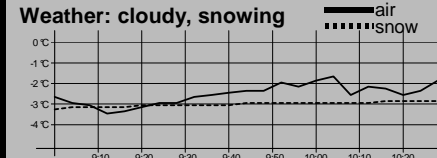
JURY

Date of race:
22.3.2008

Start: 9:30:30
End: 10:18:52

T.D. FIS: Zora Honzlová (CZE)
T.D. assistant: Iveta Roubíčková (CZE)
Chief of competition: Zdeněk Seidl (CZE)



Ladies 10 km C Start: 9:30:30 End: 10:18:52	Course information Homologation No.: 9/2005 HD: 62 m Laps: 2 x 5 km MC: 57 m Highest point: 1043 m TC: 374 m Lowest point: 981 m	Weather: cloudy, snowing 
--	--	---

Rank	Bib	FIS code	Name	Nat	5 km	2nd lap	Total	Behind	FIS.p.
1.	33	3155006	SKALNÍKOVÁ Eva	1985 CZE	15:02.9 (1.)	15:55.1 (2.)	30:58.0		71,54
2.	34	3155073	HÁJKOVÁ Eliška	1988 CZE	15:17.9 (3.)	15:41.1 (1.)	30:59.0	1.0	71,97
3.	35	3155041	NÝVLTOVÁ Eva	1986 CZE	15:13.1 (2.)	16:09.9 (3.)	31:23.0	25.0	82,30
4.	32	3155231	MORAVCOVÁ Klára	1983 CZE	15:35.3 (4.)	16:10.2 (4.)	31:45.5	47.5	91,99
5.	30	3155089	AUGUSTINOVÁ Bohdana	1989 CZE	15:39.2 (5.)	16:44.2 (5.)	32:23.4	1:25.4	108,31
6.	25	3155121	HOLUBOVÁ Petra	1990 CZE	15:49.7 (7.)	17:00.3 (7.)	32:50.0	1:52.0	119,76
7.	31	3155011	CHRÁSTKOVÁ Martina	1985 CZE	15:44.9 (6.)	17:13.0 (11.)	32:57.9	1:59.9	123,17
8.	24	3155088	SKRBOVÁ Tereza	1989 CZE	16:20.6 (11.)	17:00.6 (8.)	33:21.2	2:23.2	133,20
9.	29	3155130	KADRMANOVÁ Ivana	1991 CZE	16:34.7 (13.)	16:47.9 (6.)	33:22.6	2:24.6	133,80
10.	20	3155233	RANDÁKOVÁ Helena	1974 CZE	16:16.6 (9.)	17:09.5 (9.)	33:26.1	2:28.1	135,31
11.	26	3155075	RÖSSLEROVÁ Zuzana	1987 CZE	16:20.4 (10.)	17:11.8 (10.)	33:32.2	2:34.2	137,93
12.	27	3155168	PETRŽELOVÁ Tereza	1989 CZE	16:13.1 (8.)	17:21.9 (12.)	33:35.0	2:37.0	139,14
13.	28	3155085	TOLAROVÁ Soňa	1987 CZE	16:34.1 (12.)	17:43.1 (14.)	34:17.2	3:19.2	157,31
14.	21	3155114	HANČÍKOVÁ Hana	1988 CZE	16:49.0 (14.)	17:46.1 (15.)	34:35.1	3:37.1	165,02
15.	16	3155132	KAWULOKOVÁ Dorota	1989 CZE	17:14.3 (18.)	17:34.8 (13.)	34:49.1	3:51.1	171,04
16.	23	3155052	JETMAROVÁ Jana	1978 CZE	17:10.8 (17.)	17:47.9 (16.)	34:58.7	4:00.7	175,18
17.	12	3155196	ŠRAILOVÁ Lucie	1988 CZE	17:02.6 (15.)	17:58.4 (17.)	35:01.0	4:03.0	176,17
18.	17	3155016	JIŘIČKOVÁ Simona	1984 CZE	17:22.7 (20.)	17:58.9 (18.)	35:21.6	4:23.6	185,04
19.	15	3155223	ZELENKOVÁ Šárka	1987 CZE	17:07.5 (16.)	18:19.6 (20.)	35:27.1	4:29.1	187,41
20.	18	3155018	KUPILÍKOVÁ Alena	1984 CZE	17:20.2 (19.)	18:28.2 (21.)	35:48.4	4:50.4	196,58
21.	3	3155225	JEDLIČKOVÁ Eva	1982 CZE	17:32.0 (22.)	18:16.7 (19.)	35:48.7	4:50.7	196,71
22.	8	3155098	BLAŽKOVÁ Lenka	1988 CZE	17:26.6 (21.)	19:19.4 (26.)	36:46.0	5:48.0	221,38
23.	14	3155087	FUSKOVÁ Dana	1989 CZE	17:44.4 (23.)	19:02.6 (23.)	36:47.0	5:49.0	221,81
24.	13	1203964	PROCHÁZKOVÁ Daniela	1977 CZE	18:02.5 (25.)	18:51.6 (22.)	36:54.1	5:56.1	224,87
25.	22	3155076	ADAMÍKOVÁ Eliška	1986 CZE	17:49.8 (24.)	19:09.2 (24.)	36:59.0	6:01.0	226,98
26.	11	3155221	ŽANDOVÁ Kateřina	1986 CZE	18:10.5 (27.)	19:10.7 (25.)	37:21.2	6:23.2	236,53
27.	7	3155244	PTÁČKOVÁ Miroslava	1988 CZE	18:06.7 (26.)	19:28.9 (27.)	37:35.6	6:37.6	242,73
28.	6	3155029	JANDOVÁ Klára	1985 CZE	18:28.5 (28.)	19:48.1 (28.)	38:16.6	7:18.6	260,39
29.	9	3155127	JANATOVÁ Markéta	1988 CZE	18:34.1 (29.)	19:57.3 (29.)	38:31.4	7:33.4	266,76
30.	4	3155166	PAVLÍČKOVÁ Pavla	1989 CZE	19:31.3 (30.)	20:36.3 (31.)	40:07.6	9:09.6	308,18
31.	5	3155241	MAREŠOVÁ Michaela	1989 CZE	19:50.8 (31.)	20:28.7 (30.)	40:19.5	9:21.5	313,31
DNS	1	3185271	JOENSUN Marika	1991 FIN				did not start	
DNS	2	3185272	SORVALI Mari	1991 FIN				did not start	
DNS	10	3155131	KAWULOKOVÁ Beata	1989 CZE				did not start	
DNS	19	3155195	SOUKALOVÁ Gabriela	1989 CZE				did not start	

Ladies**10 km C**

Start: 9:30:30

End: 10:18:52

Course information

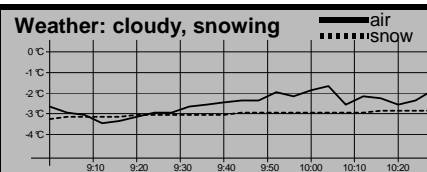
Homologation No.: 9/2005

HD: 62 m Laps: 2 x 5 km

MC: 57 m Highest point: 1043 m

TC: 374 m Lowest point: 981 m

Weather: cloudy, snowing



Rank	Bib	FIS code	Name	Nat	5 km	2nd lap	Total	Behind	FIS.p.
------	-----	----------	------	-----	------	---------	-------	--------	--------

Presented: 35

Started: 31

Classified: 31

T.D. FIS
Zora Honzlová (CZE)

Competition secretary
Jiří Ďoubalík (CZE)