



**RACE ANNOUNCEMENT**  
**INTERNATIONAL**  
**FIS-MASTERS RACE**



**Slalom / Giant Slalom**  
**Zagreb – Sljeme, Croatia**

**Slalom 29<sup>th</sup> January 2011**  
**Giant Slalom 30<sup>th</sup> January 2011**

Organiser: **Croatian Ski Association**  
**Trg Krešimira Ćosića 11, Zagreb**

Technical organiser: **Zagreb Ski Association**  
**Ulica grada Vukovara 284, Zagreb**

Club organiser: **Ski Club Zagreb**  
**Kranjčevićeva 4, Zagreb**

**Organising and race committee**

FIS Technical Delegate: **Hrvojka Žagar Kaličanec (CRO)**  
Organising Committee: **Ivan Drinković - OC Chairman**  
**Miho Glavić - President of the Croatian Ski Association**  
**Vedran Pavlek - Alpine Team and Ski Pool Director**  
**Darivoj Repač - President of the Zagreb Ski Association**  
**Slavko Davila - President of the SC Zagreb**  
**Dag Modrić – President of the Croatian Snow Sports**  
**Instructors And Trainers Association**

**Tade Drinković**  
**Franc Kaučić**  
**Tomislav Kušan**  
**Vladimir Mihaljević**  
**Ivan Vučinić**  
**Luka Vučinić**

Masters Committee: **Luka Vučinić**  
Chief of Race: **Darivoj Repač**  
Race office Secretary: **Ines Šulek**  
Chief of time keeping: **Zagreb Ski Association**  
Chief of Course: **Tade Drinković**  
Chief of the gate judges: **Zrinka Kadrnka Šilhard**  
First Aid: **The Croatian Mountain Rescue Service**  
**(Hrvatska gorska služba spašavanja - HGSS)**

Referee: will be nominated at the team captains 'meeting

## Programme

### Friday 28<sup>th</sup> January 2011

19:00 Team captain's meeting and drawing of bibs for the SL competition in the Hotel Tomislavov dom - Sljeme

### Saturday 29<sup>th</sup> January 2011

09:30 – 11:00 Free slalom training – Zeleni spust

09:00 – 13:00 Distribution of start numbers (bibs): SC Zagreb house – RACE OFFICE  
Container on the top of the Crveni spust

13:15 -13:45 Course inspection 1<sup>st</sup> run (all categories)

14:00 **Start of SLALOM – 1<sup>st</sup> run** – Crveni spust

Starting order: 14:00 category C = women, following category B = men over 55

14:45 category A = men 30 – 55

15:30 -16:00 Course inspection 2<sup>nd</sup> run (all categories)

16:15 **Start of SLALOM – 2<sup>nd</sup> run** - Crveni spust

Starting order: 16:15 category C = women, following category B = men over 55

17:00 category A = men 30 – 55

19:00 Team captain's meeting and drawing of bibs for the GS competition in the Hotel Tomislavov dom – Sljeme

20:00 Party with prize giving ceremony for SL

### Sunday 30<sup>th</sup> January 2011

08:00 Lift open

07:30 -9:00 Distribution of start numbers (bibs): SC Zagreb house – RACE OFFICE  
Container on the top of the Crveni spust

8:15 -8:45 Course inspection (category C, B)

09:00 **Start of GIANT SLALOM categories C, B** - Crveni spust

10:15 -10:45 Course inspection (category A)

11:00 **Start of GIANT SLALOM category A** - Crveni spust

Prize giving ceremony will be held about one hour after the end of the race near Race office SC Zagreb house - container on the top of the Crveni spust

## General competition rules

The competition is organised according to the ICR and FIS Masters Rules Alpine Skiing.

## Eligibility of competitors

Participation is limited to male and female skiers who are members of their National Ski Association, age group 1980 and older. Each National Ski Association bears the responsibility that their entered competitors have signed the FIS Athletes' Declaration and are licensed to compete internationally. Athletes and coaches are responsible for their own insurance.

## Enrolment fee and lift passes

Enrolment fee: 110,00 Kn ( Euro 15,00 per person and competition)

Lift passes: 70,00 Kn (Euro 10,00 per person and day).

## Entries

The entries (using official FIS Entry Forms, including year of birth, FIS Masters Code Numbers and current points) must be sent by a National Ski Association.

## Liability

The organisers point out the compulsory insurance, they will not take any liability for participants, officials and audience.



**Entry deadlines: 27<sup>th</sup> of January 2011 at the latest**

All entries can be sent by regular mail, E-mail or fax to the following address:

**SKI KLUB ZAGREB**

[www.ski-klub-zagreb.hr](http://www.ski-klub-zagreb.hr)

Kranjčevićeva 4 (beside stadium)

10000 ZAGREB

E-mail: [info@ski-klub-zagreb.hr](mailto:info@ski-klub-zagreb.hr)

Phone: +385 1 3668 332

Fax: +385 1 3668 332

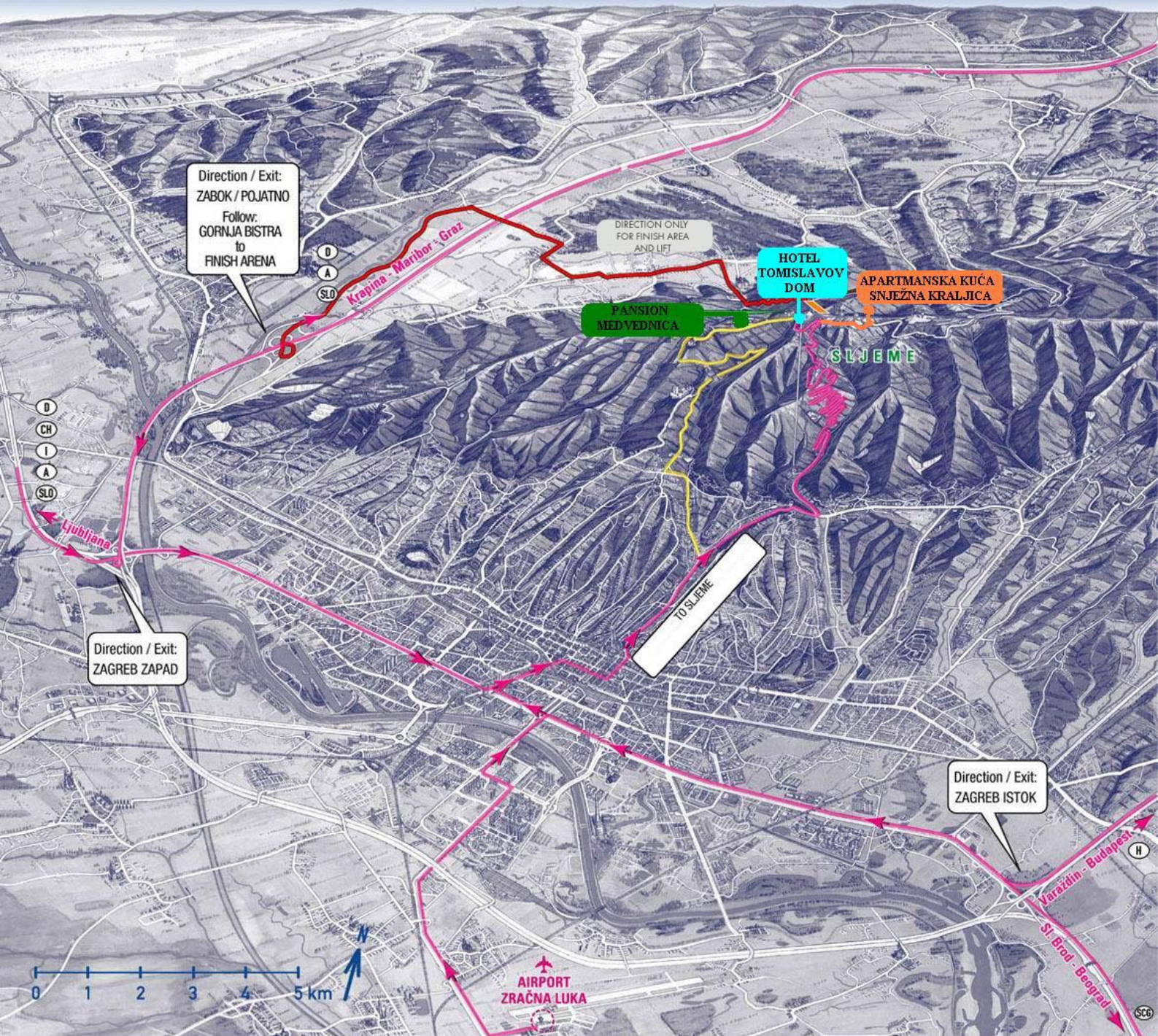
**Race office:**

**Friday & Saturday evening:**

Hotel «Tomislavov dom» – Sljeme

**Saturday 09:00 – 18:00, Sunday 8:00-14:00**

SC Zagreb house - container on the top of the Crveni spust



### Reservations for accommodation in Tomislavov dom & Snježna kraljica on Sljeme

#### **ZAGREB SKI ASSOCIATION / ZAGREBAČKI SKIJAŠKI SAVEZ**

Ulica grada Vukovara 284  
 10000 Zagreb  
 phone. +385 1 6398 596, + 385 1 6398 597  
 fax. + 385 1 6395 478  
 e-mail: [zss@zss.hr](mailto:zss@zss.hr)  
 web: [www.zss.hr](http://www.zss.hr)

### Reservation for accommodation in Zagreb

#### **Zagreb Tourist Board**

Kaptol 5, 10000 Zagreb  
 Phone: +385 1 48 98 555, Fax: +385 1 48 14 340  
[www.zagreb-touristinfo.hr](http://www.zagreb-touristinfo.hr)