

Invitation

FIS NORDIC WORLD SKI CHAMPIONSHIPS 2015



FALUN2015
FIS NORDIC WORLD SKI CHAMPIONSHIPS
SWEDEN 18.02-01.03

PRESENTED BY

VIESSMANN



PRESENTING SPONSOR



INTERNATIONAL SPONSORS



DATA SPONSOR



NATIONAL SPONSORS



OFFICIAL SUPPLIERS



BEYOND SKIING



Contents

Greetings	3
Welcome to Falun	4
Organisation	5-6
FIS Officials	7
Competition Programme	8-10
Facts about Ski Jumping Venue	11
Facts about Cross-Country Venue	12
Overview of Courses	13
Examples of Stadium and Course maps	14-19
Information from the Organiser	20-22
FIS Rules	23-26

Greetings from the Organisers

It is a great pleasure to welcome all of you to the FIS Nordic World Ski Championships in Falun, Sweden in February 2015.

We are really looking forward to world class competitions together with great festival events.

We have been preparing for several years to offer athletes and teams top class sporting conditions at the Lugnet venue, a newly renovated and upgraded ski arena.

We expect 200 000 spectators to attend and to support the competitors, creating a fantastic atmosphere.

1 800 enthusiastic volunteers will do their utmost to make sure that every athlete feels comfortable and happy to be in Falun.

We want the athletes to feel that they are in focus whatever we do.

The city of Falun and the Dalarna region have much to offer, a rich culture, exotic restaurants and surroundings with preserved nature. Falun is a Unesco World Heritage site.

We will ensure that the entire FIS family, all athletes, teams, media, sponsors and spectators will enjoy great hospitality and exciting competitions.

The organisers hope that everyone visiting the Championships 2015 will experience new friendship and something beyond all expectations.

A warm welcome to the championship city Falun!



H.R.H. Prince Daniel
LOC Advisory Board



Marcus Wallenberg
President



Jonny Gahnshag
Mayor of Falun



Sven von Holst
CEO



Welcome to Falun

From the 18th of February until the 1st of March 2015 the FIS World Ski Championships in Ski Jumping, Nordic Combined and Cross-Country will be held in Falun. With memories and knowledge from the previous championships held here in 1954, 1974, and 1993, we again welcome the world's best skiers to Falun. This time we reach for more than great competitions; this time it will be something beyond all expectations - we will bring the world closer to the joy of skiing.

Together we will create breath-taking competitions as well as a party that never ends for the audience; together we will put Falun and Sweden in the centre of the world's attention.

Whether you are an athlete, an official, a volunteer, in the audience or at home watching TV, together we are the key to a successful World Championship. Together we will make Falun 2015 a Ski Party the world never before has experienced!

Facts about Falun

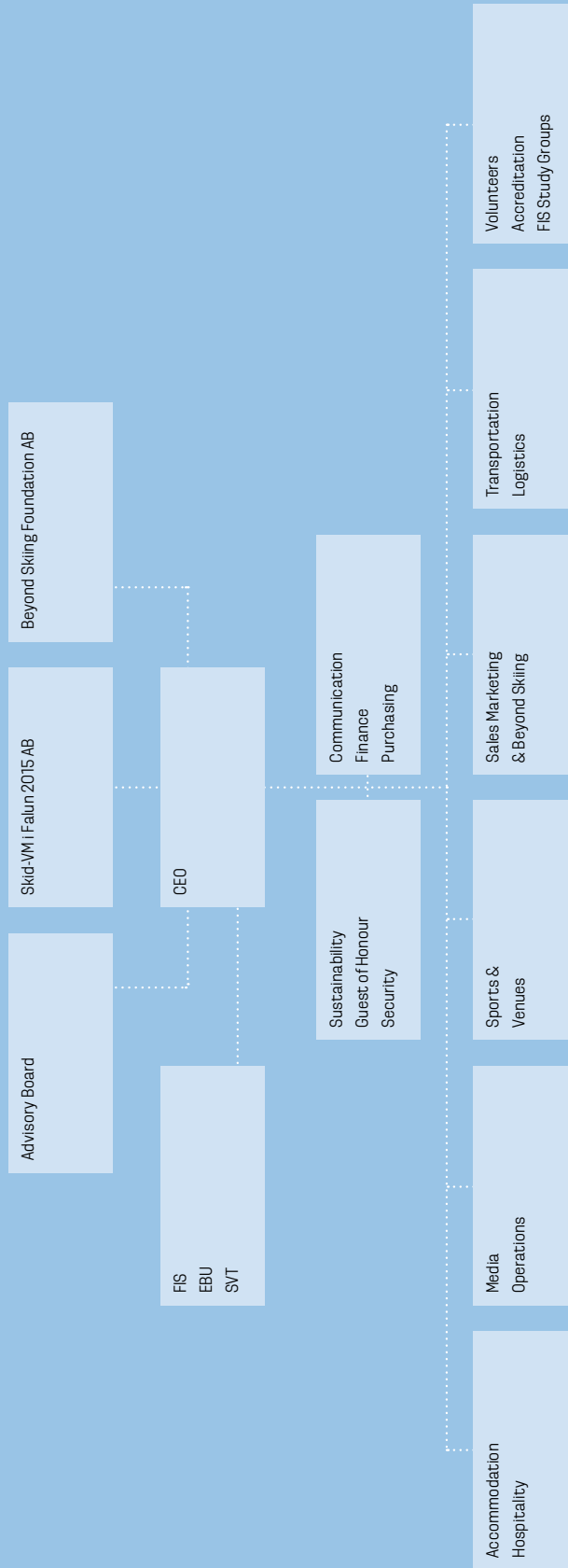
The short distances, the rich cultural life, the great variety of activities and the vibrant city centre make Falun the ideal place to live and work.

Everything you need is close at hand; work, schools, nature, culture and recreation. Falun is Dalarna's largest municipality with over 57 000 inhabitants. Our city offers 14 nature reserves and a beautiful archipelago in the lake Runn, just a minute away from the town centre, which it takes just fifteen minutes to cycle through. The seat of the County Council is located here and we are the cultural and sports centre of Dalarna.

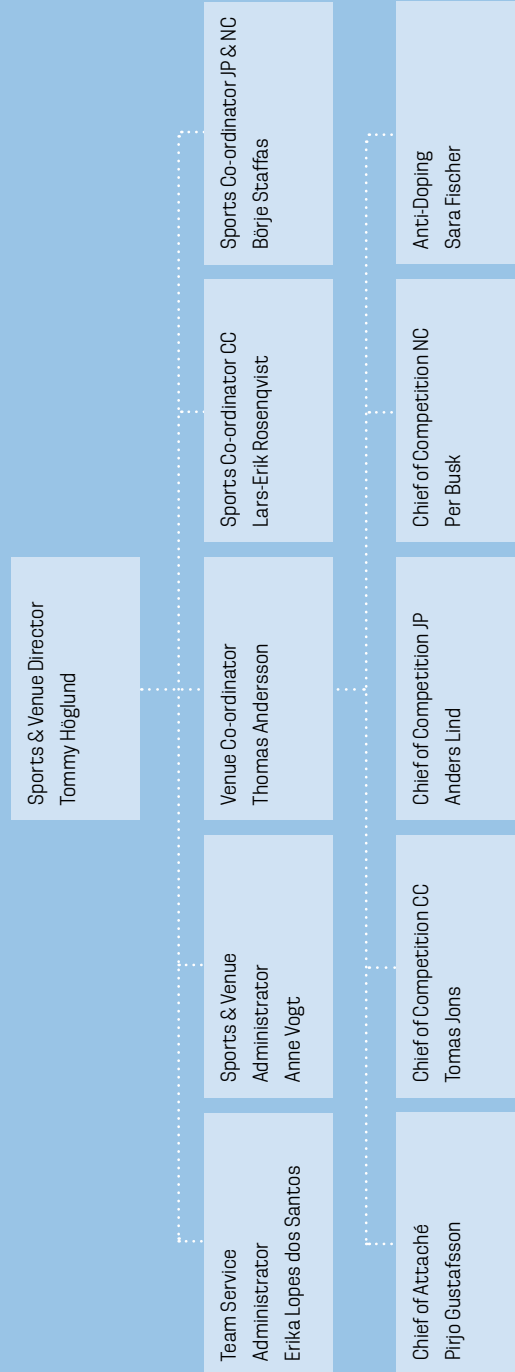
With its mining area, town and homesteader estates Falun has been listed as a World Heritage Site since 2001. The town has made great strides in sustainable development in the areas of environment, growth and public health.

Falun is gradually establishing itself as a national centre for health and sport, our main focus areas. Every fifth resident in Falun is a member of an association and 58 of the Swedish Sports Confederation's 67 special sports can be practiced at Lugnet, one of Sweden's most complete sports and recreational venues. Falun's sister city is Borlänge. Together they form a joint housing and labour market with over 100 000 inhabitants.

Local Organising Committee



Organising Committee



FIS Officials



Cross-Country



Race Director	Pierre Mignerey, FIS
Technical Delegate	Robert Peets, EST
TD Assistant	Jussi Prykäri, FIN
Jury Member	Riikka Rakic, SUI
Jury Member	Alan Serrano, USA
Equipment Control	Vegard Ulvang, NOR
Event Coordinator	Sandra Spitz, FIS
Media Coordinator	Michael Lamplot, FIS
Marketing Support	Jeff Ellis, FIS



Ski Jumping



Race Director Men	Walter Hofer, FIS
Assistant Race Director Men	Miran Tepes, FIS
Race Director Ladies	Chika Yoshida, FIS
Assistant Race Director Ladies	Borek Sedlak, FIS
Technical Delegate	Sandro Pertile, ITA
TD Assistant	Thomas Hasslberger, GER
Chief Distance Measurer	Matthias Kindler, GER
Judge	Vaclav Kral, CZE
Judge	Tom Nyman, FIN
Judge	Mirko Hünefeld, GER
Judge	Jarle Solbu, NOR
Judge	Vadim Lisovskiy, RUS
Judge	Daniel Lind, SWE
Equipment Control Men	Jouko Törmänen, FIN
Equipment Control Ladies	Chika Yoshida, FIS
Technical Support Men	Sepp Gratzner, FIS
Technical Support Ladies	Aga Baczkowska, FIS
Media Coordinator	Horst Nilgen, FIS



Nordic Combined



Race Director	Lasse Ottesen, FIS
Assistant Race Director	Jan Rune Grave, FIS
Technical Delegate	Branco Simic, SLO
TD Assistant	Thomas Abratis, GER
Judge	Vaclav Kral, CZE
Judge	Tom Nyman, FIN
Judge	Mirko Hünefeld, GER
Judge	Jarle Solbu, NOR
Judge	Vadim Lisovskiy, RUS
Judge	Daniel Lind, SWE
Equipment Control	Guntram Kraus, FIS
Media Coordinator	Silke Tegethof, FIS

Medical /Anti-Doping

Medical Supervisor	Stanislaw Szymanik, POL
Blood testing	Alexander Kirchbichler, GER
FIS Anti-Doping Expert	Rasmus Damsgaard, DEN

Competition Programme



[CC] Cross-Country

MON 16 FEB

19:00 Information Meeting Teams and SRS Industry (Training Times, Transportation, Course Maps)

TUE 17 FEB

14:00-15:00 Official Training Qualification 5/10 km

19:00 TCM Qualification Men and Ladies

WED 18 FEB

11:00-12:00 Official Training Sprint Men and Ladies

13:30 Ladies Qualification 5 km F

15:00 Men Qualification 10 km F

19:00 Opening Ceremony, Lugnet venue

19:00 TCM Sprint Men and Ladies

THU 19 FEB

13:00 Sprint Ladies & Men Qualification C

15:15 Sprint Ladies & Men Final C

FRI 20 FEB

13:00-14:00 Official Training Skiathlon Ladies and Men

19:00 TCM Skiathlon M & L

SAT 21 FEB

13:00 Ladies Skiathlon 15 km

14:30 Men Skiathlon 30 km

17:00-18:30 Official Training Team Sprint

19:00 TCM Team Sprint

SUN 22 FEB

12:30 Team Sprint Qualification L & M F

14:30 Team Sprint Finals L & M F

MON 23 FEB

14:00-15:00 Official Training 10 km Ladies

19:00 TCM Ladies Individual

TUE 24 FEB

13:30 Ladies Individual 10 km F

15:00-16:00 Official Training 15 km Men

19:00 TCM Men Individual

WED 25 FEB

13:30 Men Individual 15 km F

16:00-17:30 Official Training Relay Ladies

19:00 TCM Ladies Relay

THU 26 FEB

11:00-12:00 Official Training Relay Men

13:30 Ladies Relay 4 x 5 km

19:00 TCM Men Relay

FRI 27 FEB

13:30 Men Relay 4 x 10 km

16:30-18:00 Official Training MS Ladies 30 km

19:00 TCM Ladies Mst

SAT 28 FEB

11:00-12:00 Official Training MS Men 50 km

13:00 Ladies 30 km Mass start C

19:00 TCM Men Mst

SUN 1 MAR

13:30 Men 50 km Mass start C

16:00 Closing Ceremony, Lugnet venue



[JP] Ski Jumping Men and Ladies

TUE 17 FEB

19:00 TCM Ski Jumping Ladies HS100

WED 18 FEB

10:00-12:30 Official Training Ski Jumping Ladies HS100

13:00 TCM Ski Jumping Ladies HS100

14:00 TCM Ski Jumping Men HS100

19:00 Opening Ceremony, Lugnet venue

THU 19 FEB

11:30-13:30 Official Training Ski Jumping Men HS100

15:30 Trial Round Ladies HS100

17:00 Ladies Qualification HS100

19:00-21:30 Official Training Ski Jumping Men HS100

21:30-22:00 TCM Men

FRI 20 FEB

15:00 Men Trial Round HS100

16:00 Ladies Trial Round HS100

17:00 Ladies Competition HS100

19:00 Men Qualification HS100

SAT 21 FEB

15:30 Men Trial HS100

16:30 Men Competition HS100

18:45 TCM Mixed Team HS100

SUN 22 FEB

16:00 Mix Team Trial Round HS100

17:00 Mix Team Competition HS100

MON 23 FEB

10:00 TCM Ski Jumping Men HS134

17:00-19:00 Official Training Ski Jumping Men HS134

TUE 24 FEB

17:00-19:00 Official Training Ski Jumping Men HS134

19:00 TCM Ski Jumping Men HS134

WED 25 FEB

16:00 Men Trial Round HS134

17:00 Men Qualification HS134

THU 26 FEB

16:00 Men Trial Round HS134

17:00 Men Competition HS134

FRI 27 FEB

10:00 TCM Men Team HS134

17:00-19:00 Official Training Men Team HS134

SAT 28 FEB

16:00 Men Team Trial Round HS134

17:00 Men Team Competition HS134

SUN 1 MAR

16:00 Closing Ceremony, Lugnet venue



[NC] Nordic Combined

MON 16 FEB

18:30 Information meeting Teams

TUE 17 FEB

09:00-12:00 Official Training HS100

WED 18 FEB

08:00-09:30 Official Training HS100

19:00 Opening Ceremony, Lugnet venue

THU 19 FEB

09:00-11:00 Official Training HS100

17:30-19:00 Official Training NC CC

19:00 TCM Individual HS100

FRI 20 FEB

09:00 Individual Trial HS100

10:00 Individual Competition HS100

16:00 10 km Individual Gundersen

SAT 21 FEB

09:00-11:00 Official Training HS100

17:00-18:30 Official Training NC CC

19:00 TCM Team HS100

SUN 22 FEB

09:00 Team Trial HS100

10:00 Team Competition HS100

16:00 Team 4 x 5 km

MON 23 FEB

09:00-11:00 Official Training HS134

TUE 24 FEB

09:00-11:00 Official Training HS134

17:00-18:00 Official Training 10 km Gundersen

WED 25 FEB

09:00-11:00 Official Training HS134

16:00-17:30 Official Training NC CC

17:30 TCM Individual HS134

THU 26 FEB

09:00 Individual Trial HS134

10:00 Individual Competition HS134

15:15 10 km Individual Gundersen

FRI 27 FEB

09:00-11:00 Official Training HS134

16:30-18:00 Official Training NC CC

18:30 TCM Team Sprint HS134

SAT 28 FEB

09:00 Team Sprint Trial HS134

10:00 Team Sprint HS134

16:00 Team 2 x 7,5 km

SUN 1 MAR

16:00 Closing Ceremony, Lugnet venue



Facts about Lugnet Ski Jumping venue

- Hill renovation completed for winter jumping in November 2013 and for summer jumping in July 2014
- Both hills featuring new tracks from MANA, including a side cooling system; summer tracks of porcelain
- Ice tracks to be available from end of August/ beginning of September 2014 to enable early season training
- New Mountain Railway, with a cabin for 20 people, to provide transport from the ski stadium up to the hills in 6 minutes one-way from August 2014. A middle station at the judges' tower.
- Large hill with elevator and normal hill with stairs
- Hill construction mainly of steel and glass
- Spectator capacity: 25 000
- Hill sizes: Large hill HS134 / K120; normal hill HS100 / K90
- Altitude of viewpoint on top of large hill: 303 meters above sea level
- Height of large hill tower: 54 metres
- Owned by Lugnet in Falun AB, a company owned by the city of Falun



Facts about Lugnet Cross-Country venue

- Work to build the Lugnet arena began in the early 1970's; growth over the years and major construction projects before previous World Championships
- New horseshoe ready in May 2013, offering a service facility and a highly interesting section of the course both for competitors and spectators.
- Falun2015 developer of the new World Championships house, sponsored by Stora Enso. Currently houses Falun2015 local organisation committee offices but will serve as race office and timekeeping facility during event.
- 20 new permanent wax cabins
- New competition courses offer good skiing and decisive hills in a spectator-friendly fashion
- Final Falun2015 courses use major parts of the old course system in a creative way
- Multiple permanent and temporary overpasses ensure that spectators never have to cross the tracks
- Most famous climb known as "Mördarbacken"

Overview of Courses - Cross-Country

2015 WSC Cross - Country events

Courses



Nordic Combined Gundersen 10 km (F)	2.5 km Nordic Combined
Nordic Combined 4 x 5 km Team 2.5 km (F)	2.5 km Nordic Combined
Nordic Combined Team Sprint 2 x 7.5 km (F)	1.5 km (5x1.5 km)



5 km Individual qualification Ladies (F)	Blue 5 km
10 km Individual qualification Men (F)	Red 5 km + Blue 5 km
Individual Sprint Ladies (C)	Green 1.4 km
Team Sprint Ladies (F)	Green 1.2 km
Individual Sprint Men (C)	Green 1.4 km
Team Sprint Men (F)	Green 1.4 km
15 km Skiathlon Ladies (C/F)	2 x Red 3.75 + 2 Blue x 3.75 km
30 km Skiathlon Men (C/F)	3 x Red 5 km + 3 Blue x 5 km
10 km Individual start Ladies (F)	Red 5 km + Blue 5 km
15 km Individual start Men (F)	2 x Blue/Red 7.5 km
4 x 5 km Relay Ladies	2 x (2 x Red 2.5 km C) + 2 x (2 x 2.5 km F)
4 x 10 km Relay Men	2 x (4 x Red 2.5 km C) + 2 x (4 x 2.5 km F)
30 km Mass Start Ladies (C)	3x(Red 5 km + Blue 5 km)
50 km Mass Start Men (C)	5x(Red 5 km + Blue 5 km)

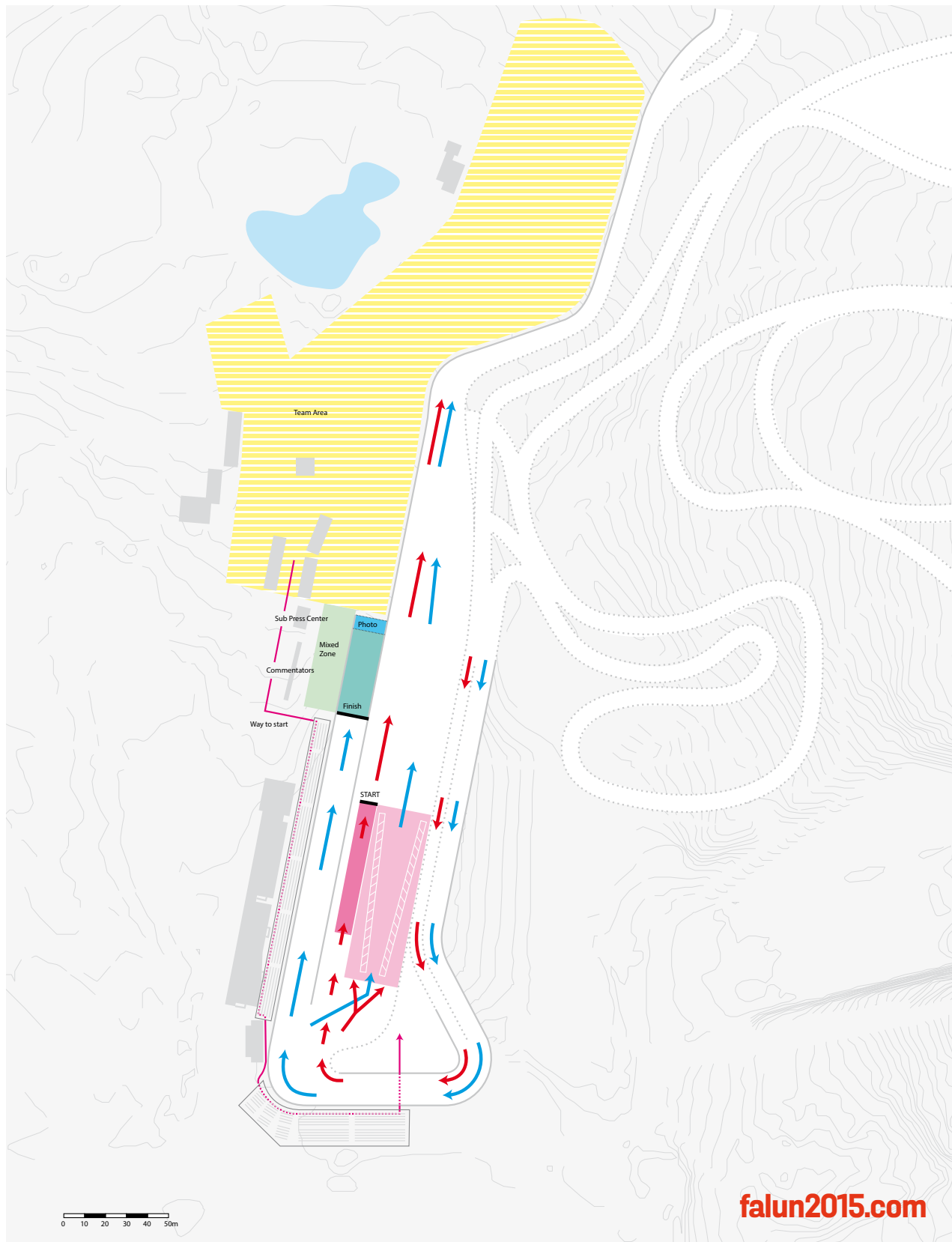
Cross-Country - Ladies Skiathlon C/F

2 x 3,75 km Red + 2 x 3,75 km Blue



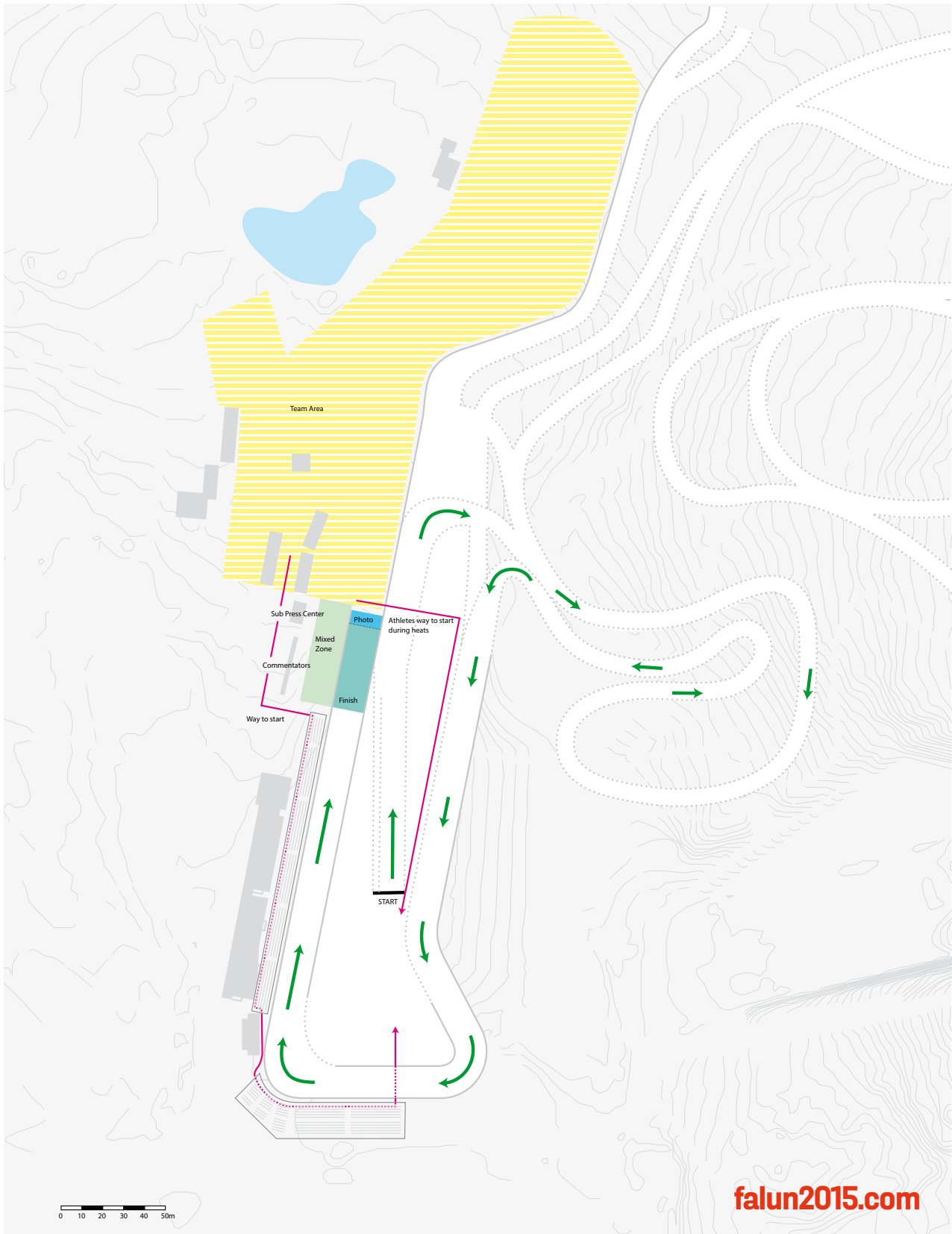
Cross-Country - Ladies Skiathlon C/F

2 x 3,75 km Red + 2 x 3,75 km Blue



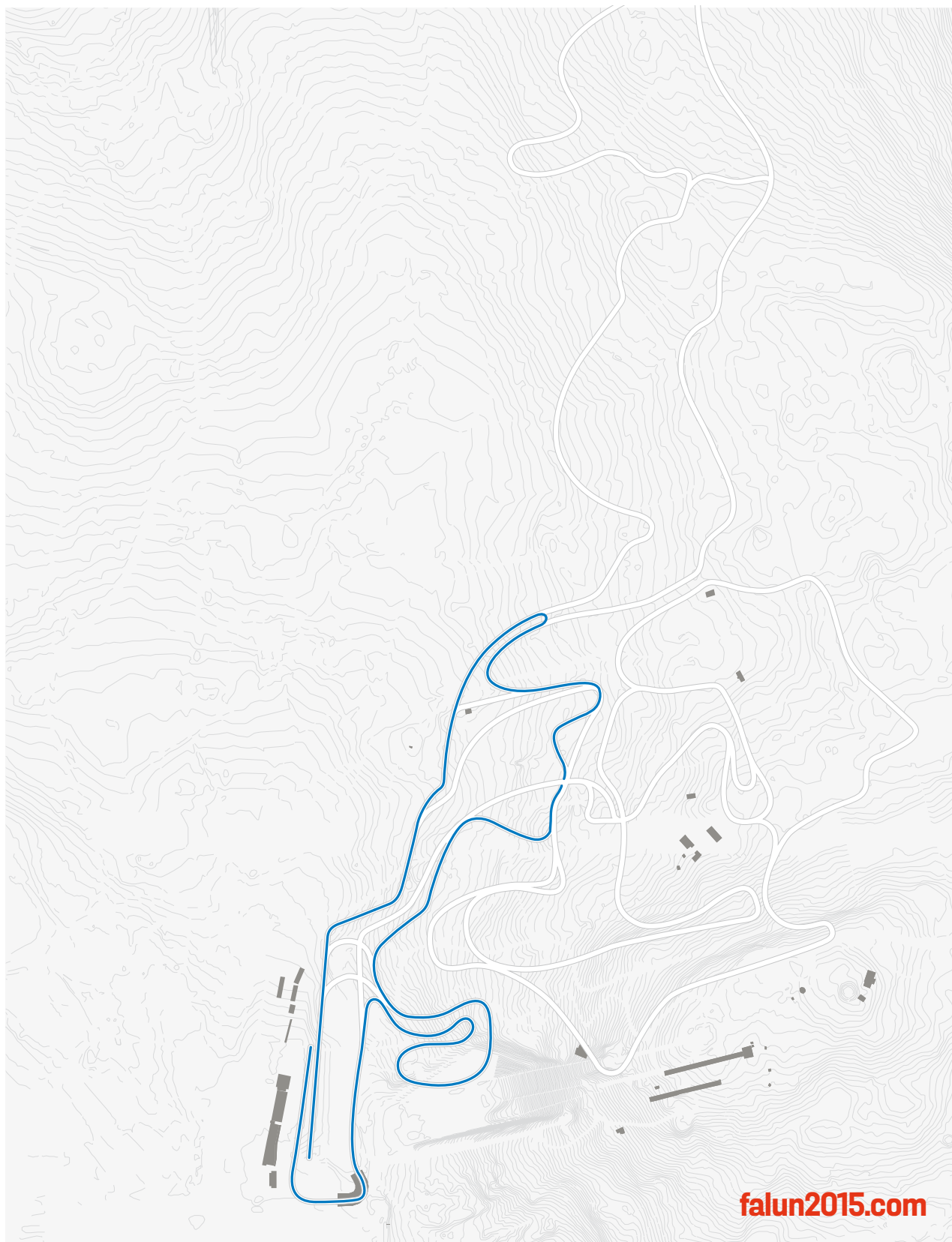
Cross-Country - Men Individual Sprint C

1,4 km Green



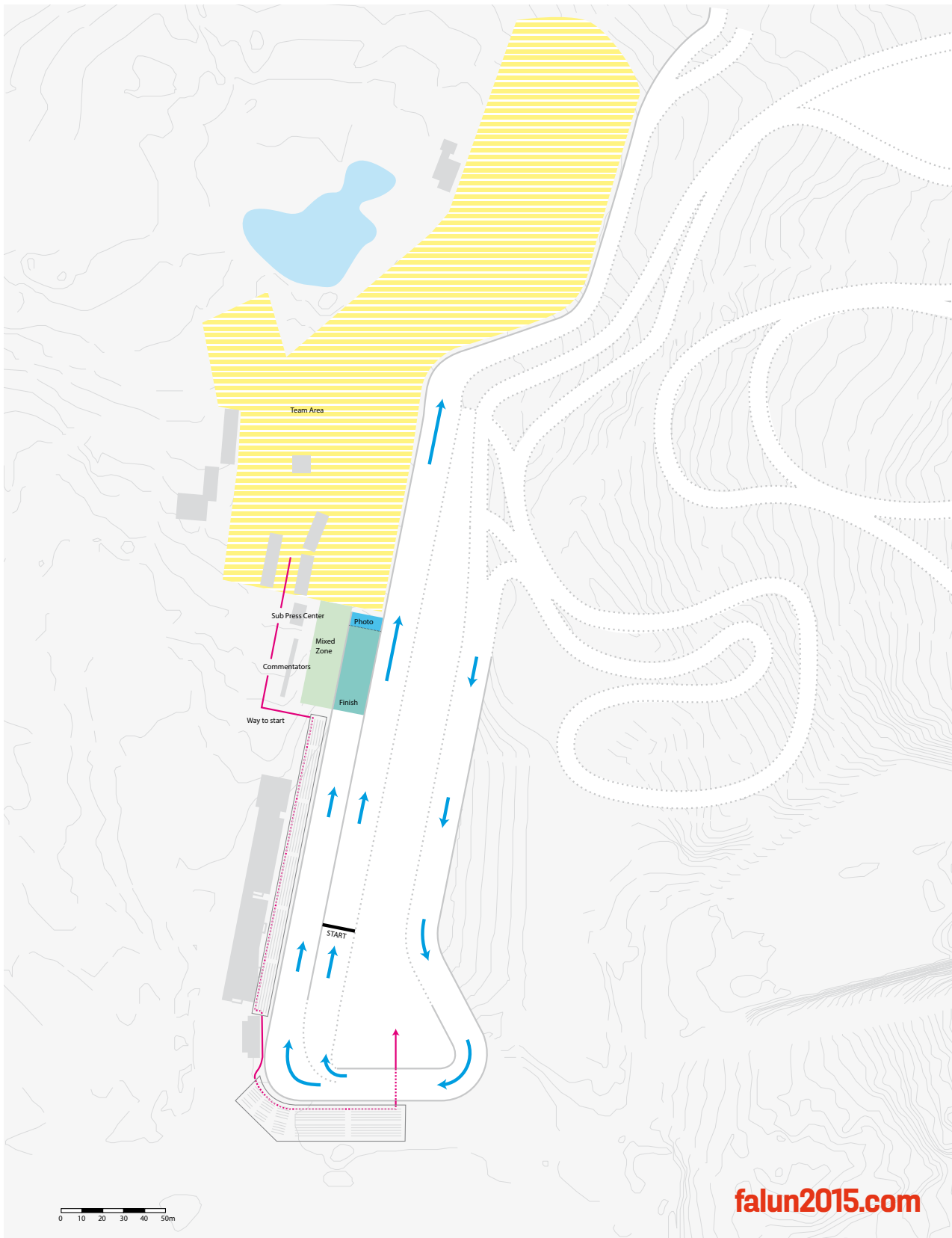
Nordic Combined - Individual Gundersen 10 km

4 x 2,5 km Blue

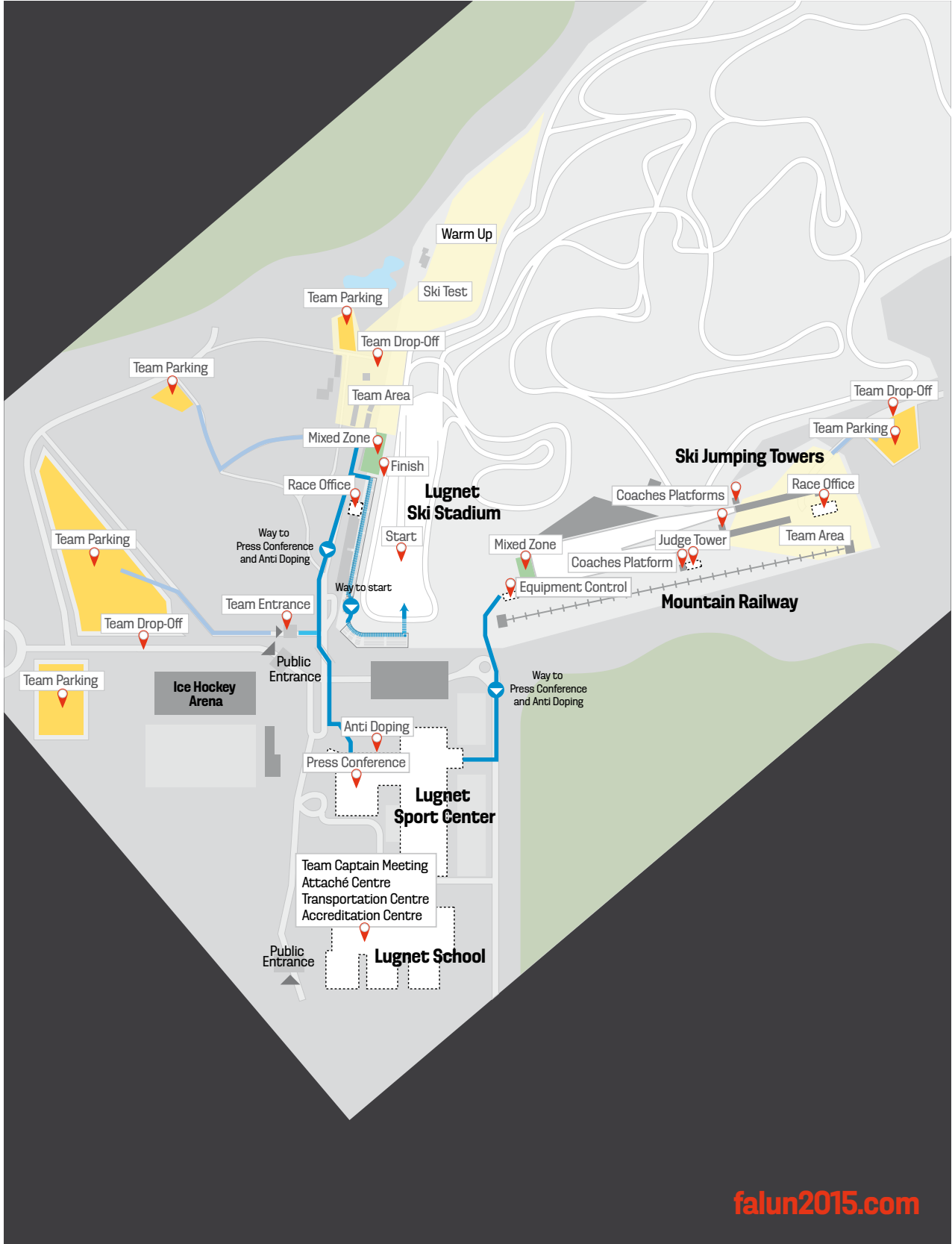


Nordic Combined - Individual Gundersen 10 km

4 x 2,5 km Blue



Arena Overview



falun2015.com

Accommodation

The National Ski Association (NSA) teams/athletes will be accommodated in hotels at a good standard, located between 5 and max 20 minutes by car from the venues.

The Local Organising Committee Falun2015(LOC) has a good cooperation with the hotels and can assure an adequate level of accommodation specially adjusted to the needs of athletes and teams.

The hotels are fully aware of the requirements of the athletes, especially regarding the selection of food and meal times. Three meals (breakfast, lunch, dinner) per day will be served at the hotel, comprising sufficient amounts of food including nonalcoholic drinks.

Extras such as rooms for physical therapists, extra drinks etc should be paid directly at the hotel.

The booking of accommodation will be coordinated by the local tourist company Visit Södra Dalarna AB, which is a part of the LOC. All reservations, confirmations and transactions related to the booking should be done through Visit Södra Dalarna AB.

The reservations and payments will be handled according to the FIS rules.

As soon as the accommodation office receives a reservation, an offer will be sent to the NSA.

The LOC will not be responsible for teams that wish to take care of their own accommodation arrangements, but is able to help with special requests for guests and also arrangements for alternative accommodation such as private houses.

The LOC will cover the cost of accommodation for qualified athletes and team members according to the quota. For team members outside the quota, the rate will be at maximum price 120 CHF/person per day.

For extra team officials and special guests, according to the quotas, that are officially entered and whose accommodation has been reserved through the LOC, the maximum price for accommodation with half board is 1 450 SEK/person per night, for official nights.

For all athletes/officials before and after the official Championships period (16 Feb - 2 March), the maximum rates will be as follows:

Double room full board: 1 450 SEK per person per night

Single room full board: 2 450 SEK per person per night

Should a team wish to book more single rooms than the rules require, the price will include the price difference at the hotel facility concerned, approx. 300 - 900 SEK per person per night.

To access the accommodation booking system, please click here www.teamFalun2015.axaco.se. You will also find the invitation and booking info under the link Teams on our web site: www.falun2015.com/teams.

The deadline for preliminary booking is the 1st of October 2014 (number of double/single rooms). Please note that we cannot guarantee rooms or prices after this date.

An invoice for the deposit of 50% of the total number of rooms and nights will be sent to each NSA for payment no later than the 15th of November 2014. An invoice of the remaining 50% will be sent for payment no later than the 15th of January 2015. If payment is not completed before the due date, the LOC reserves the right to cancel the reservation.

A reimbursement of the expenses will be prepared according to the rules for free accommodation for qualified competitors after the event, and will be paid no later than the 30th of April 2015.

Cancellation conditions

Cancellation has to be sent in writing to accommodation@falun2015.com

Cancellation can be done without charge provided that:

- Cancellation of up to 100 % of the original reservation is received before the 31st of October 2014.
- Cancellation of up to 50 % of the original reservation is received before the 30th of November 2014.
- Cancellation of up to 20 % of the original reservation is received before the 15th of January 2015.

The booking details received by the 18th of January 2015 will be considered as final and will be the basis for the calculation of the total payment, cancellation fees and no-shows.

In case of no-shows - there will be no refund (100 % of the reservation has to be paid).

If cancellation is received later than the above-mentioned dates, the NSA has to pay 100 % of the reservation.

Transportation

Transportation from the airport to Falun will be provided free of charge for the teams. The free service includes one trip per team in each direction only. Additional transportation can be arranged at a cost of 500 SEK per person and direction.

Please use the same link as for the accommodation to request transportation from and to the airport. Deadline: 16th January 2015

If you are arriving in Falun using your own vehicle and do not need our transportation services at Arlanda, please make a note of this in the accommodation and transportation request. Please also make a note of how many bags and skis your team will have in their luggage.

When you arrive at the Stockholm Arlanda Airport, please look for the Falun2015 Info Point in Terminal 5 to receive further information about your trip to Falun.

Transportation service

The LOC will provide transportation service free of charge between the venue and team accommodation. Please contact your team attaché for any team transportation needs. There will be a representative of the attaché and transportation service at most team hotels.

At the Ski Jumping venue, there is a mountain railway to use free of charge during the World Ski Championships.

Parking

There is only a limited number of parking spaces at the venues. Parking passes are required, and they will be handed out at the check-in at your hotel. Please make a note in your entry of how many vehicles your NSA wishes to park at the venues separated per discipline. The LOC recommends using the transportation service and the mountain railway since the venue is very compact.

Preliminary Entry for Teams and SRS Industry

To submit the preliminary entry for the FIS Nordic World Ski Championships 2015 in Falun for NSA and SRS Industry, please click here www.teamFalun2015.axaco.se.

You will be redirected to the Falun2015 registration site to complete your preliminary entry, including accommodation and transportation requests.

The system is open from today. The preliminary entry including accommodation and wax cabin bookings must be done by 31st October 2014 (see rule 13.1). Final transportation needs must be submitted no later than the 16th January 2015.

Final Entry for Teams

Final entries for teams will need to be submitted using the FIS online registration system (as in use for the FIS World Cup, please just select Falun as the venue).

According to the FIS World Ski Championships Rules, the provisional team selection must be done online no later than 28th January 2015, or 21 days before the beginning of the World Ski Championships (rule 13.3.1). The final team selection must be done online no later than 16th February 2015, or 24 hours after the last FIS World Cup (rule 13.3.2).

The teams that compete on the World Cup may use their existing login details for the FIS online registration system. In case your NSA does not yet have a login, please contact Judith Lessing at [lessing\(at\)fisski.com](mailto:lessing(at)fisski.com) to apply.

SRS does not need to submit a final entry for the World Ski Championships.

Wax cabins and wax trucks for Teams and SRS Industry

Cross-Country and Nordic Combined

Cross-Country

Wax cabins will be provided according to this formula in general. The LOC together with FIS will make the final distribution after receiving the preliminary entry.

NSA Allocation Formula	Cabins / NSA
1 to 3 athletes	0.5
4 to 6 athletes	1
7 to 12 athletes	2
13 athletes or more	3

Price for additional regular cabins: 1 000 Euro / cabin

(VAT is not included)

Price for double cabins: 2 000 Euro / cabin

(VAT is not included)

Ski Jumping

The wax cabins will be divided based on the number of participants in each discipline and nation.

Service Industry

SRS Single cabin 1 000 Euro / cabin

(VAT is not included)

SRS Double cabin 2 000 Euro / cabin

(VAT is not included)

Insurance

All participants need to have a valid accident insurance. The LOC will not be liable for accidents of participants, officials and spectators.

Radio Communication

Anyone planning to use radio frequency

equipment in Sweden, has to apply for a permit through Swedish Post and Telecom Agency (PTS)

www.pts.se

E-mail: pts@pts.se

<http://www.pts.se/upload/Ovrigt/Radio/Radiotillstand/temporary-radio-licence-application.doc>

The deadline for frequency applications for the FIS Nordic World Ski Championships 2015 in Falun is the 31st of October 2014.

Accreditation

The main Accreditation Centre will be located at the Lugnet School, close to the Lugnet venue.

Address: Lugnetvägen 3, SE-79131 FALUN.

Team Captains Meetings

Team Captains Meetings for all three disciplines will be held at the Lugnet School, close to the Lugnet venue. (See map)

Race Office

The Cross-Country Race Office will be located at the Cross-Country venue (see map).

The Ski Jumping and Nordic Combined Race Office will be located at the Ski Jumping venue (see map).

There will be a Team info Centre at the Lugnet School.

Team Attachés

All nations that prefer to have their own attaché or an attaché team during the event will be provided with one. The attaché or attaché team are responsible for supporting their designated team with arrivals, departures and any transportation needs, and for providing administrative and linguistic support.

Summary of FIS Rules

Art. 8 Eligibility and Citizenship of the Competitors

To be eligible for entry in FIS World Championships the competitor must be a citizen of the country of which National Ski Association he has a license and prove this with a valid passport (ICR 203).

Art. 9.1 Number of Participants and Officials

The maximum number of participants from each country shall be:

Art.9.1.1

Nordic events – Cross Country, Ski Jumping and Nordic Combined. No more than Cross Country 12 men, Cross Country 12 ladies, Nordic Combined 6, Ski Jumping men 6, Ski Jumping ladies 5, plus the competitors according to art. 9.3

Art. 9.2 Number of participants in each single event

In each single event no more than 4 competitors per National Ski Association plus the competitors according to art.9.3 are entitled to start.

Art. 9.2.1

Official Training Ski Jumping and Nordic Combined:

A maximum number of 6 athletes (Ski Jumping ladies 5) may take part in the official training plus competitors according to art. 9.3.

Art. 9.3 Reigning World Champions

The reigning FIS World Champions have the right to participate in addition to the quota in the event they won at the next FIS World Championships, if they are entered by the same National Association (this is valid only for the individual competitions and not for the team competitions). If however the World Champion is also entered for other events, he/she must be included within the quota.

Art. 9.4 The maximum number of team officials, medical and technical personnel per national team shall be:

Number of disciplines (Cross-Country, Men and Ladies, Nordic Combined, Ski Jumping Men and Ladies)	Number of starting competitors	Number of officials
4 +	20 or more	20
	15 - 19	16
	10 - 14	12
	5 - 9	8
	2 - 4	6
3	20 or more	15
	15 - 19	12
	10 - 14	9
	5 - 9	7
2	20 or more	10
	15 - 19	8
	10 - 14	6
1	1 - 9	4
	5 to 8	5
	9 to 12	6
	1 to 4	4

In addition, each nation may register its President and Secretary General with the team entry. These extra entries will be considered extra officials in terms of accommodation rules (see art 17.5)

13. Time-limits for Entry

Overview

Art.	When	What	Who
13.1	July 1st	Official Invitation to all National Ski Associations	Organizing Committee
13.2	3 months (31st October 2014)	Preliminary team entry	Each National Ski Association
13.3.1	21 days before beginning of respective FIS World Championships	Provisional team Selection	Each National Ski Association
9, 13.3.2	24 hrs after the last FIS World Cup before the respective Championships	Final team selection	Each National Ski Association
13.4	2 hours before the draw	Define entries: Nordic disciplines	National Ski Association/TC

Art. 13.2 preliminary team entry for each nation

National entry, using the entry form supplied by the Organising Committee and stating the preliminary total number of the national team, also giving details of the number of officials and the approximate number of competitors in each of the following groups of events. In principle this is 31st October 2014 of the preceding year (Art. 13.2.1):

- Cross-Country Men
- Cross-Country Ladies
- Ski Jumping Men
- Ski Jumping Ladies
- Nordic Combined

Art. 13.3 Team Selection

Art. 13.3.1

21 days before the beginning of the competitions or the Opening Ceremony. Entry of the registered competitors with a valid FIS license by name, with the preliminary number of participants in each single event define in art. 13.2.

Art. 13.3.3

The final team selection by name and event with numbers according to art. 9 are to be made at latest 24 hours after the final World Cup Event preceding the respective FIS Championships.

Art. 13.4 Time-Limit for define entries

Definite entries per event, stating names and group classification of competitors according to the International Competition Rules.
Nordic Events: 2 Hours

WSC entry requirements for individual Cross-Country events

Requirements for the distance competitions (10/15km Interval Start, Skiathlon and 30/50km Mass Start)

Athletes who have reached at least one result better than or equal to 90 FIS points distance for the men and 120 FIS points distance for the ladies during the last 365 days (17/02/2014 - 17/02/2015), will be allowed to start in the distance competitions (10/15km Interval Start, Skiathlon and 30/50km Mass Start).

A qualification competition (5 km for ladies and 10km for men) will be held on 18 February 2015 for the athletes who didn't reach these requirements.

The top 10 ranked competitors will be allowed to start in the distance competitions (10/15km Interval Start, Skiathlon and 30/50 km Mass Start) as part of their nation's quota under the condition that they have achieved less than 180 FIS points (including the penalty) for the ladies and 140 FIS points for the men.

The entries have to be submitted according to the following deadlines (also check art. 13.3 above):

- Preliminary entries: 31st October 2014
- Provisional team selection: 28th January 2015
- Final team selection: 16th February 2015
- Final entries: 17th February 2015 2 hours before the Team Captains' Meeting.

Requirements for the sprint: no special requirements.

Art 14 Anti-Doping and Medical Rules

Art. 14.1

If any questions or protest arises as to the gender of the athlete, FIS shall assume responsibility for taking the necessary steps to determine the gender of the athlete (ICR art. 221.4).

Art. 14.2

The FIS Anti-Doping Rules compiled in accordance with the World Anti-Doping code define all by-laws concerning anti-doping controls.

Art 14.3

Anti-doping control of all events is compulsory.

Art 17.5 Accommodation

Art.17.5.1

At FIS World Championships in the Nordic disciplines the maximum price per person (non-qualified athletes and team officials according to the quotas in 9.4.1 and 9.4.2) for accommodation and three meals including non-alcoholic drinks with each meal may not exceed CHF 120 for the championships per day. In the event that the inclusion of the National Ski Association's President & Secretary General exceeds the maximum quota of officials for the respective discipline, then the applicable price is the same as Art.9.4.4 Extra officials.

Art 17.5.2

For extra team officials and special guests, according to the quotas defined in art. 9.4.4 and 9.4.6, that are officially entered and whose accommodation has been reserved through the LOC, the maximum price for accommodation with half board shall not exceed the maximum price at the same period the previous year in the same accommodation (plus/minus inflation), but in any case not exceed CHF 200.

Art. 17.7 Qualification for Free Accommodation

Competitors who qualify according to the following criteria are entitled to free accommodation with full board including non-alcoholic drinks with each meal for the duration of their participation. Participation is defined from the day (evening meal) before the first official training until the morning (breakfast) after the competition. The numbers of nights free accommodation with full board for qualified competitors are in principle as follows, whereby the system is adapted to the respective championship programme and published by the Organising Committee in the team invitation, following agreement with FIS:

Art17.7.1 Free Accommodation - Nordic Disciplines

- Cross-Country

All athletes, male and female, having achieved at least one result better than 75 FIS Cross-Country points, as well as one male and one female athlete of each FIS affiliated National Ski Association without an athlete qualified according to the above-mentioned limitations.

- Ski Jumping / Ski Flying

All athletes who qualify for participation in FIS World Cup and Ski Flying competitions who:

- have already gained WC points
- have gained at least one COC point in the past or the current season.

- Nordic Combined

All athletes who qualify for participation in FIS World Cup competitions, who:

- have already gained WC points
- have gained at least one COC point in the past or the current season
- as well as one athlete of each FIS affiliated National Ski Association without a competitor qualified according to the above-mentioned limitations.

For the Nordic Disciplines: Cross-Country, Ski Jumping, Nordic Combined

The number of nights of free accommodation for qualified competitors who participate in the respective competition is 4 nights per competition. The maximum number of nights of free accommodation with full board cannot exceed the total duration of the championships. The free accommodation with full board applies specifically to the qualified athlete and is non-transferable.

In addition, the current FIS World Champions in the Nordic disciplines will profit automatically from free accommodation with full board for the event in which he/she is reigning world champion.

For more information visit the FIS website
<http://www.fis-ski.com/inside-fis/document-library/major-events/>



**We hope to
see you in Falun!**

falun2015.com

[#falun2015](https://twitter.com/Falun2015) | facebook.com/Falun2015 | twitter.com/Falun2015 | instagram.com/falun2015 | youtube.com/falun2015