

LILLEHAMMER, NOR

03.12. - 06.12.2015

Competition Programme

DATE	FORMAT	HILL / COURSE	SJ/XC
Sat, 05.12.2015	Team	HS 138, 2,5 km lap	1 jp / 10 km
Sun, 06.12.2015	Ind. Gundersen	HS 138, 2,5 km lap	1 jp / 10 km

Event Programme (Subject to change! LOC time: CET)

DATE	COMPETITION	TRAININGS	MEETINGS	OTHER
Thu, 03.12.		09:00 - 13:00 Free XC Training	17:00 TCM Radisson Blu Lillehammer	19:30 Opening Ceremony in the city centre
Fri, 04.12.	18:45 SJ HS 138 PCR/Qualification	09:00 - 10:30 XC Official training 12:00 - 14:00 SJ HS 138 Official training		
Sat, 05.12.	09:00 SJ HS 138 Team Event 14:00 XC 4x 5 km km Team Event	08:00 SJ HS 138 Trial Round 13:15 XC Warm Up/ training	17:00 TCM Radisson Blu Lillehammer	after the race winner presentation at the venue
Sun, 06.12.	09:00 SJ HS 138 Ind. Gundersen 14:15 XC 10 km Ind. Gundersen	08:00 SJ HS 138 Trial Round 13:40 XC Warm Up/ training		after the race winner presentation at the venue

Deadlines

PRELIMINARY ENTRIES	FINAL NUMBERS	FINAL ENTRIES
28/10/2015	26/11/2015	04/12/2015 at 15:00

Contacts

Head Quarters	OC Secretariat +47 61287320 post@wclillehammer.no
Chief of OC	Eiliv Furuli +47 92241446 eiliv@live.com
OC Secretary	Hanne Viig Syversen +47 90062198 hanne@gyro.no
Chief of Competition	Joern Olav Bekkelund +47 95758568 jorn.bekkelund@lillehammer2016.no
Assistant Chief of Competition	Ola Kokslie +47 916 74 866 ola.kokslie@dnb.no
Accommodation Office	Marit Falkenberg +47 61287320 marit@gyro.no
Financial Office	OC Secretariat +47 61287320 post@wclillehammer.no
Transportation Office	Lars Erik Soensteli +47 91638609 Lars.Erik.Soensteli@boreal.no
Wax Cabins	SJ: Marius Noess; XC: Lars Nes marius@maur-bp.no lars.nes@olympiaparken.no

Information

1. Accreditation

- Accreditation for Teams & Officials and parking cards can be picked up at the Information and OC office at the Radisson Blu Lillehammer Hotel; opening time daily from 08:00 to 20:00

- Requests for additional accreditation and parking cards must be send via the FIS Online System or to the OC Secretariat at post@wclillehammer.no
- Requested additional accreditation and parking cards can be picked up at the Information and OC office at the Radisson Blu Lillehammer Hotel.

2. OC Office / Race Office

- **OC Office:** Radisson Blu Lillehammer Hotel. Open from 30.11., Daily Opening Hours: 08:00 – 20:00
- There will be two **Race Offices:** one at the Ski Jumping Hill and one at the Cross-Country Stadium
- Race Office at Birkebeineren Cross Country Stadium opens Wednesday, 02.12., Lysgaardsbakkene Ski Jumping Hill opens Thursday, 03.12.

3. Accommodation

- Booking according the FIS Rules via the FIS Online registration system
- Price per person: CHF 125 per person in double room with full board for persons in the quota in the competition period.
- The OC offers the following accommodation:
Birkebeineren Hotel & Apartments
First Hotel Breiseth
Scandic Victoria Hotel
Nermo Hotel & Apartments
Quality Hotel & Resort Hafjell

4. Transport

- **Official airport:** Oslo Airport Gardermoen.
- The organizing committee will provide transportation between the airport and the hotels in Lillehammer. 1 transport (from and to the airport) free of charge. Price for additional transport: 30 € / person (one way).
- **Shuttle service**
The organizing committee will provide shuttle transport between the hotels and the Birkebeineren Cross Country Stadium and the Lysgaardsbakken Ski Jumping Hill.

5. Payments

- **Accommodation costs:** The OC will pay for persons within the quota according to FIS Rules. Persons outside quota and race period will pay directly to the hotel.
- **Carrying costs/Reimbursement:** Payment will be handled by the financial office at the Radisson Blu Lillehammer Hotel.
- All payments will be done by bank transfer.

6. Waxing Facilities

- **Wax cabins:** available from 01/12/2015 at 10:00 at both venues.
- **Key pick up:** SJ in the elevator building in the outrun; XC please contact Lars Nes, +47 90598668
- **Waxing trucks:** teams arriving with trucks have to inform the OC before 28/10/2015 with exact measurements of the truck and details of the needs

7. Radio Equipment Regulations

- The import, export and the operation of radio equipment in Norway is regulated by national law. Permits for the use of radio transmission equipment must be requested according to national specifications. Information: www.npt.no

8. Visa Regulations

- Remember that citizens of some countries will need visa for visiting Norway. Please check with your embassy if you need a visa to enter into Norway.
- For an official letter of invitation, please send a request to the OC Secretariat: post@wclillehammer.no.

9. Prize money and taxes

- The current Norwegian **tax rate** for non resident athletes is 15%. Due to a special tax convention between Norway and USA and Russia, income tax will not be deducted by the OC – “the income shall be taxable only in the State of which the sportsman is a resident”.
- For other athletes, tax will be deducted by the OC according to the Norwegian *Foreign Artist Taxation Act*, and taxes will be paid by the OC according to the regular tax legislation in Norway. The athlete may contact the International Tax Collection Authority skattvest@skatteetaten.no for a certificate confirming that the tax has been paid in Norway.

10. Media & Communications

<http://www.wclillehammer.no>

<https://www.facebook.com/WCLHMR>

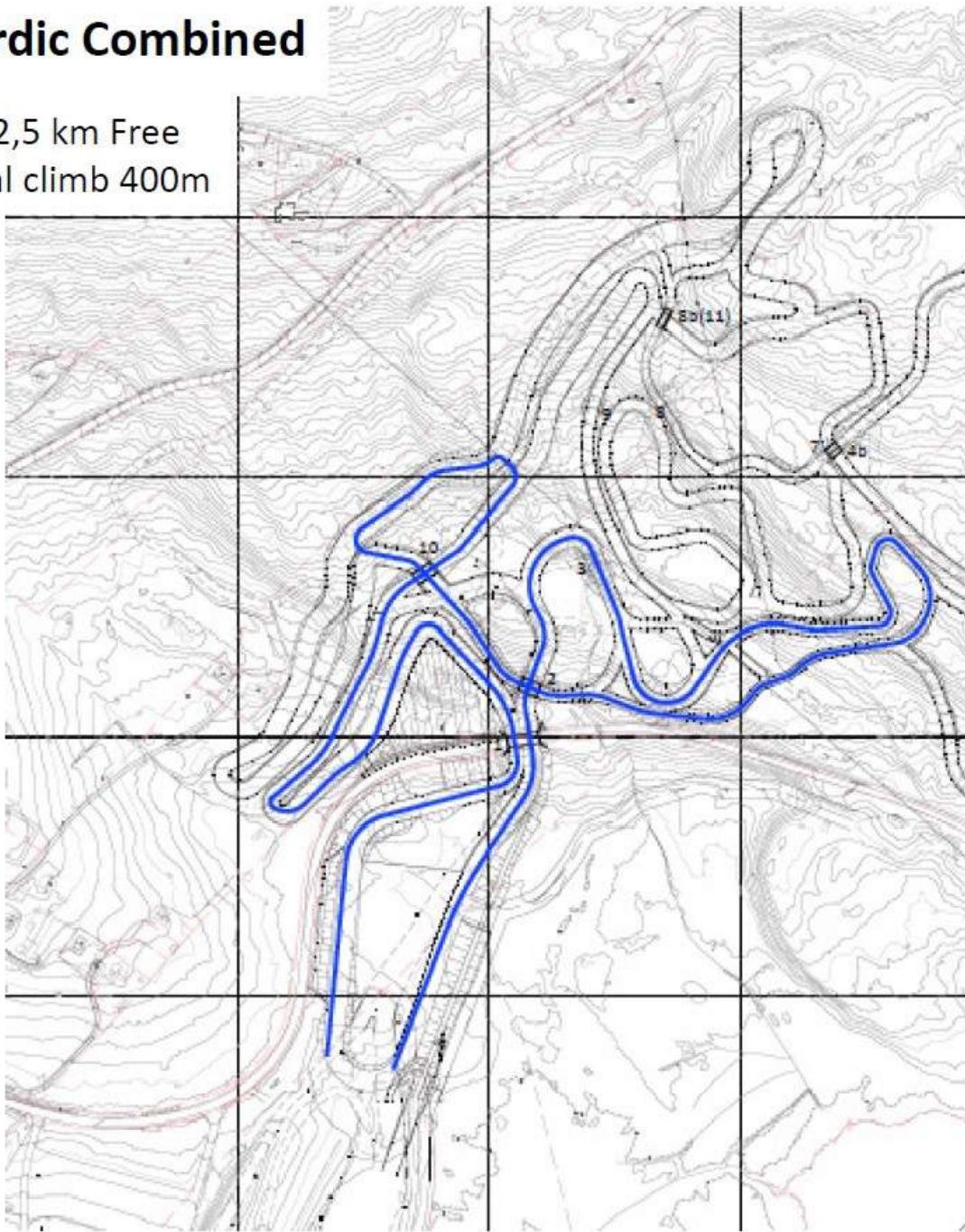
<https://twitter.com/wclhmr>

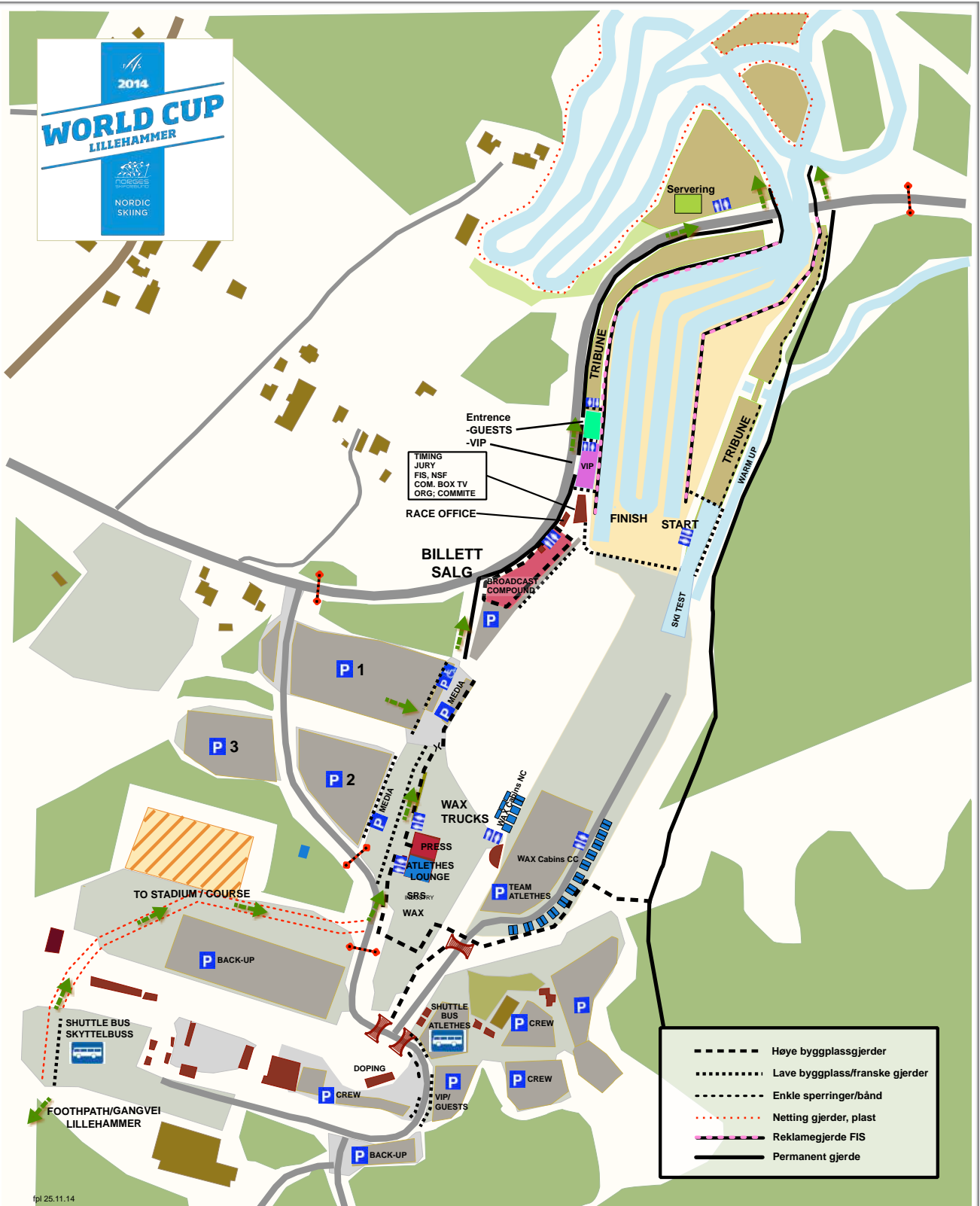
Instagram: @wclhmr

#wclhmr

Nordic Combined

4 x 2,5 km Free
Total climb 400m





fpl 25.11.14



Birkebeineren Skistadion World Cup 2015

