



## TEAM INVITATION

### FIS Telemark World Cup - Espot 2016

05-07.02.2016

The organizing Committee of Espot is pleased to invite all the National Ski Associations to attend the Telemark FIS World Cup to be held at Espot Ski Resort in Spain. The organizing Committee will host the event in accordance with the International Competition Rules (ICR) Telemark of FIS. We hope you enjoy visiting our region and participation in this event.

## ENTRIES

Will only accepted from National Telemark Associations in accordance with FIS quotas and rules for the World Cup. The regular World Cup quota applies.

Entries will be accepted in accordance with the FIS quotas and rules. All entries must be done using the FIS Online Registration System, through the FIS Homepage: <http://www.fis-ski.com> "Member Section". Entries by mail or fax are no longer accepted.

Deadlines for the Preliminary Entries is:  
January 8<sup>th</sup> 2016

Deadline for Final Entries is:  
January 18<sup>th</sup> 2016

Contact Person:  
Email: [ssaurat@skipallars.cat](mailto:ssaurat@skipallars.cat)  
Mobile: +34 620 477 058  
Office: +34 973 621 199

## ACCREDITATION

All accreditations must be collected on arrival, at the times and locations shown below:

### Opening hours:

Race Office (Espot Esquí Offices – at the foot of the slopes):

Thursday, 04 <sup>th</sup> February 2016	from 08.00 to 17.00
Friday, 05 <sup>th</sup> February 2016	from 08.00 to 17.00
Saturday, 06 <sup>th</sup> February 2016	from 08.00 to 17.00
Sunday, 07 <sup>th</sup> February 2016	from 08.00 to 17.00

If any team arriving outside of the indicated hours, they must notify the race office in advance. Only team registration is possible for this competition



Generalitat  
de Catalunya



Consejo  
Superior de  
Deportes



L'esport mou Catalunya  
Departament de Catalunya  
Reservat dels esports  
Secretaria General de l'Esport



fceh  
Federació Catalana  
d'Esports d'Hivern

AJUNTAMENT  
D'ESPOT



Diputació de Lleida  
Patronat de Turisme





## RACE OFFICE & TEAMS CAPTAINS MEETING

Will be located in the Esport Town Hall

## ACCOMMODATION

Please note that accommodation will be available at the FIS rate for the dates of the program only.

Early arrivals and late departures are subject to availability and are not available at FIS rate.

According to the FIS rules ICR 4.1.2, the rates are CHF 100/day per team members (athletes and team officials) for accommodation, half board.

Each team will be held responsible for any damage incurred during the stay.

Any kind of extras must be paid by the teams or athletes themselves. "No Shows" become charged to the National Associations directly at the Hotel.

All check-ins and rooms registration will take place at the hospitality desk at the hotel.

Accommodation will be provided as follows:

### Important information:

In order to accommodate all riders, coaches and officials in a correct way, we do need your announcement of team size **January 8<sup>th</sup> 2016**, the latest. After the above mentioned deadline for team entries the FIS rate for hotel accommodation can't be guaranteed anymore.

Price for extra night: 100 CHF/person taxes included in double room with full board. The teams are advised to accommodate the team members in double rooms because of the amount of rooms available.

**The payment has to be done directly to the OC- accommodation, before arrivals by credit card or by bank transfer.**

The fixed exchange rate, as agreed with the FIS will be:

1 CHF = 1 Euros (05/10/2015)

The State Government requires all tourism establishments to implement starting November, 1<sup>st</sup> 2012 a tourist tax.

The amount of the fee varies depending on the category of the hotel. The cost is 0.50 € per day for hotels/apart hotel of 3 \*\*\*, and 1.00 € per day in 4\*\*\*\* establishments. It is a daily amount up to a maximum of 7 days.

**The payment of this tax has to be done, by each team, directly to the hotel.**

**According ICR 4.1.3, the organisation will charge live streaming 30€/person and day**



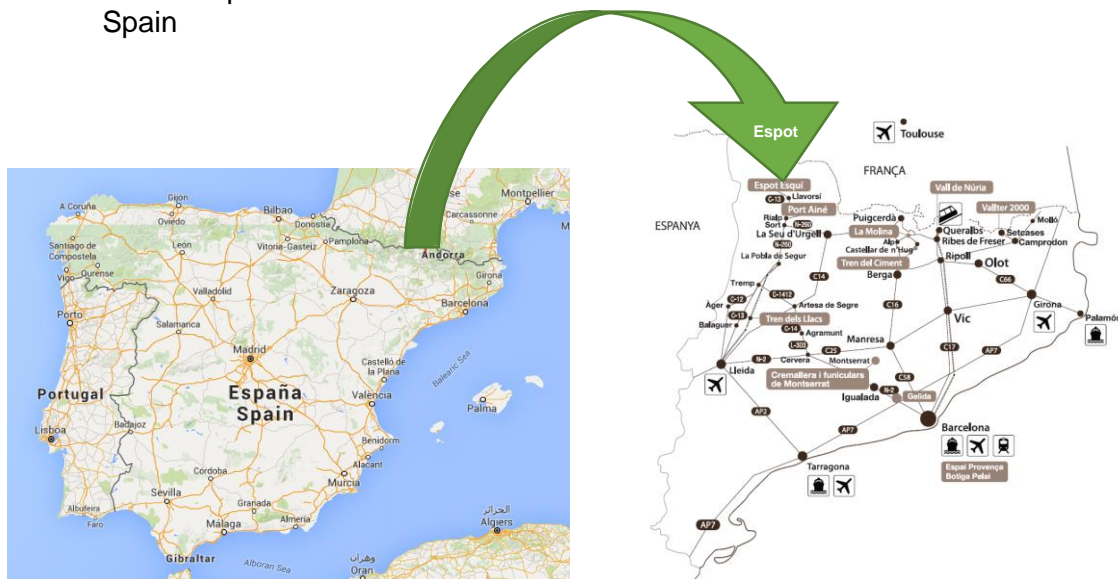
## SKI RESORT LOCATION

Espot is situated in the heart of the Catalan Pyrenees of Spain, in the province of Lleida.

It offers a diverse means of enjoying the mountains and its surrounding area, and extends to areas such as “Aigüestortes i Estany de Sant Maurici National Park”, we also have local museums and of course some exceptional local cuisine.

### Address:

Espot Ski Resort  
Ctra Berradé s/n  
25597 Espot  
Spain



### Airports

Lleida – Alguairé 175 km  
Barcelona – El Prat 254 km

### By Train

Lleida Pirineus – La Pobla de Segur 175 km  
Barcelona – Lleida – La Pobla de Segur 254 km

### By Car

- ✓ From Barcelona: Head towards Lleida, passing through Igualada, Cervera, Agramunt, Artesa de Segre, Tremp, Sort, Llavorsí and finally, Espot.
- ✓ From Madrid: Take the A-2 up to Zaragoza. From there continue on towards Lleida, Balaguer, Tremp, Sort, Llavorsí and Espot.

Madrid	631 km	6 hr 56 min
Barcelona	264 km	3 hr 24 min







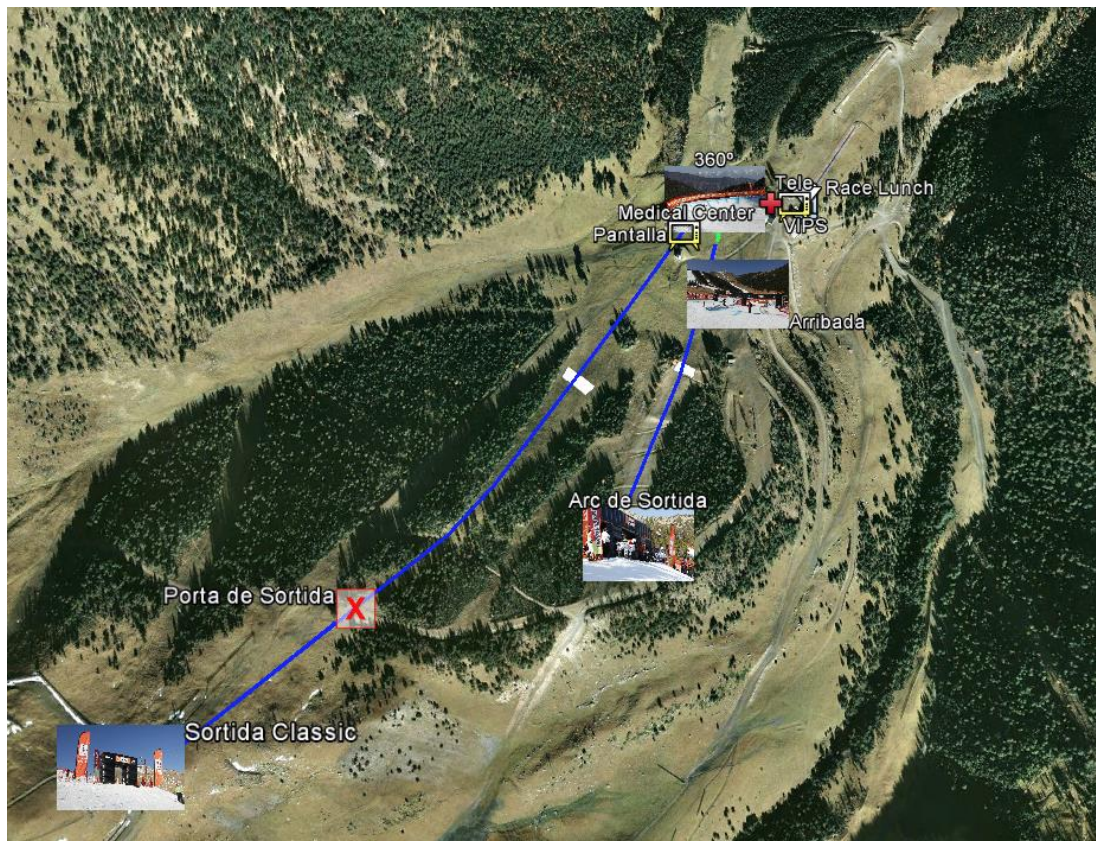
## LIABILITY

All athletes, officials and other representatives of National Associations will attend at their own risk. The organizer declines any liability for damages or injuries of athletes, officials or any other persons. All participants have to be sufficiently insured against accidents and illness by themselves or their National Association.

## ANTI-DOPING CONTROL

Anti-Doping control testing may be conducted in accordance with the rules and regulations set forth by FIS.

## SLOPES MAP



Generalitat  
de Catalunya



Consejo  
Superior de  
Deportes



L'esport

mou Catalunya

Generalitat de Catalunya  
Departament de les Relacions  
Institucionals i de les Comunicacions  
Secretaria General de l'Esport

Secretaria General de l'Esport



fceh

Comissió Catalana  
d'Esports d'Hivern

AJUNTAMENT  
D'ESPOT

AJUNTAMENT  
D'ESPOT



Ajuntament d'Espot



Ajuntament d'Espot



Ajuntament d'Espot



Ajuntament d'Espot



Ajuntament d'Espot





## TIMETABLE

Thursday, 04 <sup>th</sup> February	08.00h to 17.00 h 18:00 h	Reception of the teams at Race Office Team captain's meeting at the Town Hall of the village
Friday, 05 <sup>th</sup> February	10.30 h  18.00 h	Race: PARALLEL SPRINT Prize giving 30th minuts after the race Team captain's meeting at the Town Hall of the village
Saturday, 06 <sup>th</sup> February	10.30 h  18.00 h	Start SPRINT Prize giving 30th minuts after the race Team captain's meeting at the Town Hall of the village
Sunday, 07 <sup>th</sup> (departure day)	10.30 h 14:00 h	Start CLASSIC Prize giving

This program is provisional and can be modified at any time by the organization of the event.

