



NISSAN



### RESULTS

#### FIS FREESTYLE SKI WORLD CUP 2017

#### MEN'S SKI BIG AIR QUALIFICATION

# BA

EL COLORADO (CHI) SAT 3 SEP 2016 Start Time: 10:20

| Jury                       |                  |     | Technical Data        |                |     |
|----------------------------|------------------|-----|-----------------------|----------------|-----|
| Technical Delegate:        | SIDORCHUCK Jim   | CAN | Course Name:          | El Colorado    |     |
| Head Judge:                | CHAZELAS Lao     | FRA | Inrun Length / Pitch: | 140m / 14°     |     |
| Chief of Competition:      | MARTIN Ted       | USA | Take-off to Knoll:    | 18m            |     |
| Officials                  |                  |     | Jump Height / Pitch:  | 3.4m / 34°     |     |
| FIS Race Director:         | FITZGERALD Joe   | FIS | Judges                |                |     |
| Chief of Big Air:          | MANDRU Jorge     | CHI | Judge 1:              | COTTET Arnaud  | SUI |
| Course Designer & Builder: | NY David         | SWE | Judge 2:              | SUNDEKVIST Ola | SWE |
| Chief of Course:           | RIQUELME Ricardo | CHI | Judge 3:              | DUNLOP Robert  | CAN |
|                            |                  |     | Judge 4:              | BULC Urh       | SLO |
|                            |                  |     | Judge 5:              | ARENS Jason    | USA |

Number of Competitors: 23, Number of participating NSAs: 6

| Rank                      | Bib | FIS Code | Name               | NSA Code | YB   | Run   | J1 | J2 | J3 | J4 | J5 | Score | Total | Tie |
|---------------------------|-----|----------|--------------------|----------|------|-------|----|----|----|----|----|-------|-------|-----|
| <b>Qualified to Final</b> |     |          |                    |          |      |       |    |    |    |    |    |       |       |     |
| 1                         | 4   | 2530746  | BOESCH Fabian      | SUI      | 1997 | Run 1 | 82 | 84 | 82 | 81 | 82 | 82.20 | 89.80 |     |
|                           |     |          |                    |          |      | Run 2 | 90 | 91 | 90 | 88 | 90 | 89.80 |       |     |
| 2                         | 8   | 2529124  | NUMMEDAL Christian | NOR      | 1995 | Run 1 | 84 | 85 | 84 | 83 | 84 | 84.00 | 84.00 |     |
|                           |     |          |                    |          |      | Run 2 | 74 | 79 | 77 | 76 | 77 | 76.60 |       |     |
| 3                         | 13  | 2531179  | SCHMID Vincent     | SUI      | 1996 | Run 1 | 83 | 84 | 83 | 83 | 83 | 83.20 | 83.20 |     |
|                           |     |          |                    |          |      | Run 2 | 77 | 78 | 79 | 80 | 81 | 79.00 |       |     |
| 4                         | 16  | 2530165  | HARLAUT Henrik     | SWE      | 1991 | Run 1 | 79 | 76 | 79 | 78 | 78 | 78.00 | 82.80 |     |
|                           |     |          |                    |          |      | Run 2 | 84 | 83 | 83 | 82 | 82 | 82.80 |       |     |
| 5                         | 14  | 2532704  | RUUD Birk          | NOR      | 2000 | Run 1 | 56 | 55 | 52 | 58 | 54 | 55.00 | 81.60 |     |
|                           |     |          |                    |          |      | Run 2 | 82 | 83 | 81 | 81 | 81 | 81.60 |       |     |
| 6                         | 15  | 2528796  | MAHLER Kai         | SUI      | 1995 | Run 1 | 81 | 83 | 80 | 80 | 81 | 81.00 | 81.00 |     |
|                           |     |          |                    |          |      | Run 2 | 75 | 78 | 76 | 75 | 74 | 75.60 |       |     |
| 7                         | 5   | 2530793  | SCHULER Luca       | SUI      | 1998 | Run 1 | 81 | 81 | 81 | 79 | 81 | 80.60 | 80.60 |     |
|                           |     |          |                    |          |      | Run 2 | 76 | 76 | 76 | 75 | 78 | 76.20 |       |     |
| 8                         | 10  | 2530203  | TJADER Jesper      | SWE      | 1994 | Run 1 | 79 | 79 | 79 | 79 | 79 | 79.00 | 80.40 |     |
|                           |     |          |                    |          |      | Run 2 | 81 | 80 | 80 | 80 | 81 | 80.40 |       |     |
| 9                         | 2   | 2528724  | HUNZIKER Jonas     | SUI      | 1994 | Run 1 | 80 | 80 | 80 | 80 | 80 | 80.00 | 80.00 |     |
|                           |     |          |                    |          |      | Run 2 | 73 | 66 | 67 | 72 | 70 | 69.60 |       |     |
| 10                        | 6   | 2530038  | SCHENK Christof    | ITA      | 1993 | Run 1 | 40 | 42 | 42 | 41 | 42 | 41.40 | 78.40 |     |
|                           |     |          |                    |          |      | Run 2 | 79 | 77 | 78 | 79 | 79 | 78.40 |       |     |

| Legend: | Did Not Start | J | Judge | Tie | Tie-break points | YB | Year of Birth |
|---------|---------------|---|-------|-----|------------------|----|---------------|
|---------|---------------|---|-------|-----|------------------|----|---------------|

3 SEP 2016 / El Colorado (CHI) / 8037

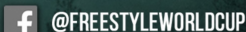
www.fis-ski.com #fisfreestyle

C73B

Results by FIS

Report created SAT 3 SEP 2016 11:21

Page 1/2





NISSAN



RESULTS  
FIS FREESTYLE SKI WORLD CUP 2017  
MEN'S SKI BIG AIR  
QUALIFICATION

BA

EL COLORADO (CHI) SAT 3 SEP 2016 Start Time: 10:20

Number of Competitors: 23, Number of participating NSAs: 6

| Rank                 | Bib     | FIS Code        | Name                     | NSA Code | YB   | Run   | J1 | J2 | J3 | J4 | J5 | Score | Total | Tie |
|----------------------|---------|-----------------|--------------------------|----------|------|-------|----|----|----|----|----|-------|-------|-----|
| 11                   | 7       | 2530908         | WELPONER Ralph           | ITA      | 1997 | Run 1 | 78 | 78 | 78 | 77 | 77 | 77.60 | 77.60 |     |
|                      |         |                 |                          |          |      | Run 2 | 78 | 79 | 78 | 77 | 76 | 77.60 |       |     |
| <b>Not Qualified</b> |         |                 |                          |          |      |       |    |    |    |    |    |       |       |     |
| 12                   | 3       | 2527732         | FINNE Klaus              | NOR      | 1990 | Run 1 | 73 | 71 | 71 | 72 | 70 | 71.40 | 71.40 |     |
|                      |         |                 |                          |          |      | Run 2 | 49 | 58 | 54 | 57 | 55 | 54.60 |       |     |
| 13                   | 25      | 2532583         | GARCES Benjamin          | CHI      | 1998 | Run 1 | 68 | 61 | 63 | 64 | 65 | 64.20 | 64.20 |     |
|                      |         |                 |                          |          |      | Run 2 | 63 | 52 | 59 | 60 | 59 | 58.60 |       |     |
| 14                   | 21      | 2532731         | MATURANA Raimundo        | CHI      | 1996 | Run 1 | 20 | 17 | 9  | 14 | 13 | 14.60 | 60.80 |     |
|                      |         |                 |                          |          |      | Run 2 | 65 | 54 | 68 | 53 | 64 | 60.80 |       |     |
| 15                   | 22      | 2532979         | BRAVO MORAL Jose Manuel  | CHI      | 1993 | Run 1 | 53 | 51 | 48 | 50 | 50 | 50.40 | 50.40 |     |
|                      |         |                 |                          |          |      | Run 2 | 42 | 43 | 41 | 44 | 45 | 43.00 |       |     |
| 16                   | 24      | 2532978         | BARROS Martin            | CHI      | 1994 | Run 1 | 43 | 46 | 47 | 46 | 47 | 45.80 | 45.80 |     |
|                      |         |                 |                          |          |      | Run 2 | 14 | 10 | 11 | 13 | 11 | 11.80 |       |     |
| 17                   | 28      | 2533627         | OLIGER Martin            | CHI      | 1994 | Run 1 | 41 | 40 | 46 | 48 | 49 | 44.80 | 44.80 |     |
|                      |         |                 |                          |          |      | Run 2 | 17 | 13 | 13 | 14 | 15 | 14.40 |       |     |
| 18                   | 27      | 2533592         | SALAS Francisco          | CHI      | 2001 | Run 1 | 37 | 41 | 43 | 43 | 40 | 40.80 | 40.80 |     |
|                      |         |                 |                          |          |      | Run 2 | 17 | 18 | 14 | 13 | 9  | 14.20 |       |     |
| 19                   | 18      | 2532141         | CREMER Mateo             | ARG      | 1997 | Run 1 | 38 | 34 | 37 | 37 | 37 | 36.60 | 36.60 |     |
|                      |         |                 |                          |          |      | Run 2 | 17 | 17 | 16 | 12 | 16 | 15.60 |       |     |
| 20                   | 12      | 2529612         | MEDRANO Nahuel           | ARG      | 1996 | Run 1 | 15 | 20 | 15 | 18 | 20 | 17.60 | 36.00 |     |
|                      |         |                 |                          |          |      | Run 2 | 35 | 35 | 38 | 36 | 36 | 36.00 |       |     |
| 21                   | 23      | 2532129         | BANADOS Juan Pablo       | CHI      | 1999 | Run 1 | 10 | 10 | 9  | 11 | 6  | 9.20  | 32.60 |     |
|                      |         |                 |                          |          |      | Run 2 | 30 | 37 | 33 | 32 | 31 | 32.60 |       |     |
| 22                   | 17      | 2532137         | GUZMAN CIMORELLI Rodrigo | ARG      | 1994 | Run 1 | 24 | 26 | 22 | 20 | 17 | 21.80 | 30.20 |     |
|                      |         |                 |                          |          |      | Run 2 | 31 | 30 | 30 | 30 | 30 | 30.20 |       |     |
| 19                   | 2530593 | BONACALZA Mateo | ARG                      | 1996     |      | Run 1 |    |    |    |    |    | DNS   |       |     |
|                      |         |                 |                          |          |      | Run 2 |    |    |    |    |    | DNS   |       |     |

Conditions on Course

Weather: Sunny      Temperature: -2°C / 28°F      Snow Condition: Packed      Snow Temperature: -7°C / 19°F

Legend:

| DNS | Did Not Start | J | Judge | Tie | Tie-break points | YB | Year of Birth |
|-----|---------------|---|-------|-----|------------------|----|---------------|
|-----|---------------|---|-------|-----|------------------|----|---------------|

3 SEP 2016 / El Colorado (CHI) / 8037  
www.fis-ski.com #fisfreestyle  
C73B

Results by FIS

Report created SAT 3 SEP 2016 11:21

Page 2/2

