

# OBERWIESENTHAL, GER

26.08. - 28.08.2016

## Competition Programme

DATE	FORMAT	HILL / COURSE	SJ/XC
Sat, 27.08.2016	Team Sprint	HS 106, 1,5 km lap	1 jp / 2x 7,5 km
Sun, 28.08.2016	Ind Gundersen	HS 106, 1,775 km lap	1 jp / 10 km

## Event Programme (LOC time: CET)

DATE	COMPETITION	TRAININGS	MEETINGS	OTHER
Thu, 25.08.				Arrival of teams
Fri, 26.08.	<b>20:00</b> SJ HS 106 PCR	<b>18:00</b> SJ HS 106 Official training	<b>11:45</b> TCM „Wiesenthaler K3“, Karlsbader Str. 3	
Sat, 27.08.	<b>14:30</b> SJ HS 106 Trial Round <b>15:30</b> SJ HS 106 Competition Round Team Sprint <b>19:00</b> XC 2x 7.5 km Team Sprint, City Course			<b>after the race</b> winner presentation at the venue
Sun, 28.08.	<b>10:00</b> SJ HS 106 Trial Round <b>11:00</b> SJ HS 106 Competition Round Ind Gundersen <b>14:00</b> XC 10 km Ind Gundersen, City Course			<b>after the race</b> winner presentation at the venue

*The program is subject to change!*

## Deadlines

PRELIMINARY ENTRIES	FINAL NUMBERS	FINAL ENTRIES
18/07/2016	01/08/2016	22/08/2016

## Contacts

OK Chairman	Peter Riedel
Subsidiary Chief of OC	Christian Günther
Race Office	Christian Günther/Simone Burghardt +49 37348 23342 <a href="mailto:info@wsc-erzgebirge.de">info@wsc-erzgebirge.de</a>
Chief of Competition	Mirko Hünefeld +49 37348 8209 <a href="mailto:mirko.huenefeld@t-online.de">mirko.huenefeld@t-online.de</a>
Accommodation Office	Tourist Information Oberwiesenthal Karlsbader Str. 3, 09484 Oberwiesenthal +49 37348 155050 <a href="mailto:info@oberwiesenthal.de">info@oberwiesenthal.de</a>
Financial Office	Helmut Benker +49 (0) 37348 23342 <a href="mailto:info@wsc-erzgebirge.de">info@wsc-erzgebirge.de</a>
Transportation Office	Christian Günther/Simone Burghardt +49 37348 23342 <a href="mailto:info@wsc-erzgebirge.de">info@wsc-erzgebirge.de</a>
Cabins	Uwe Fischbach

## Information

### 1. Accreditation

- Requests for additional accreditation must be sent via the FIS Online System or to the OC Secretariat at [info@wsc-erzgebirge.de](mailto:info@wsc-erzgebirge.de)
- **Accreditation Office:** Race Office at Panorama Hotel Oberwiesenthal, Vierenstraße 1, D-09484 Kurort Oberwiesenthal

- **Opening Times:** Thu from 14:00-18:00, Fri 12:00-18:00 & Sat 8:00 to 12:00 and 13:00-18:00, Sun 08:00-12:00

## 2. Race Office

- The Race Office is location in the Race Office at Panorama Hotel Oberwiesenthal, Vierenstraße 1, D-09484 Kurort Oberwiesenthal, Telefon: + 49 (0) 3 73 48 - 78 01 03
- **Opening Times:** Thu from 14:00-18:00, Fri 12:00-18:00 & Sat 8:00 to 12:00 and 13:00-18:00, Sun 08:00-12:00

## 3. Accommodation

- Booking according the FIS Rules via the FIS Online registration system
- Please contact the Tourist Information Oberwiesenthal, Tel.: +49 37348 155050, [info@oberwiesenthal.de](mailto:info@oberwiesenthal.de) for available hotel options.

## 4. Transport

- **Official airports:** Dresden, Leipzig & Prague
- The organizing committee will arrange transportation between the airports and the hotels on request, please contact the Race Office with your needs, Price: 150 € for up to 7 persons
- **Shuttle service:** No shuttle service between hotels and venues (walking distance)

## 5. Payments

- **Accommodation costs:** Teams have to pay for the accommodation directly in the hotels.

## 6. Changing & Waxing Facilities

- The cabins have to be shared with the Ladies SJ COC teams
- **Time schedule:** will be informed about in the TCM
- **Key pickup:** Key will be available from Uwe Fischbach or another person in the container building.

## 7. Radio Equipment Regulations

- The radio frequencies need to be authorized by the regulatory authority. For data transfer, please use the enclosed form. Unauthorized use is liable to prosecution. Fines of up to EUR 500,000 may be imposed. The authorization fees can be found in the enclosed information form of the regulatory authority. [Further information \(German & English\) here.](#)

## 8. Visa Regulations

- Please remember that citizens of some countries will need visa for visiting Germany. Please contact the German embassy in your home country.
- For an official letter of invitation please send an email request to the OC: [info@wsc-erzgebirge.de](mailto:info@wsc-erzgebirge.de).

## 9. Prize Money and Taxes

- Prize Money will be paid via bank transfer.
- Each athlete is responsible for informing FIS ([ottesen@fiski.com](mailto:ottesen@fiski.com)) of his bank

and personal details. FIS's database will be used for the payment of prize money.

- German athletes are responsible for paying the income tax to the German government themselves. For international athletes, the OC will withhold taxes (15,825 %). All athletes will receive a detailed receipt for the prize money and taxes.

## 10. Media & Communications

<http://www.wsc-erzgebirge.de/>

<https://www.facebook.com/wsc.erzgebirge/>

#sgp2016

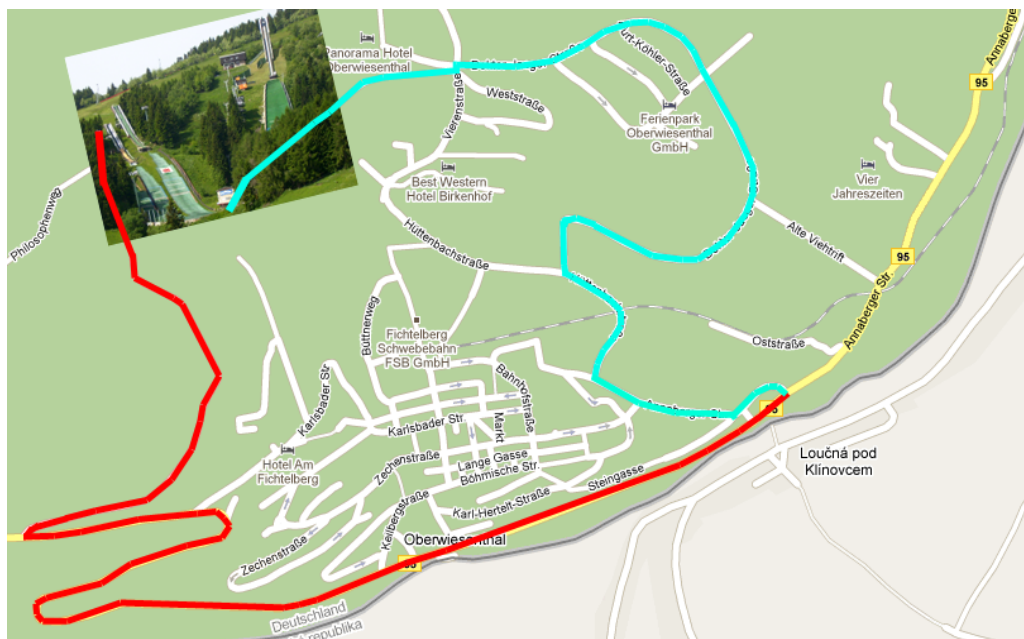
## 11. Maps



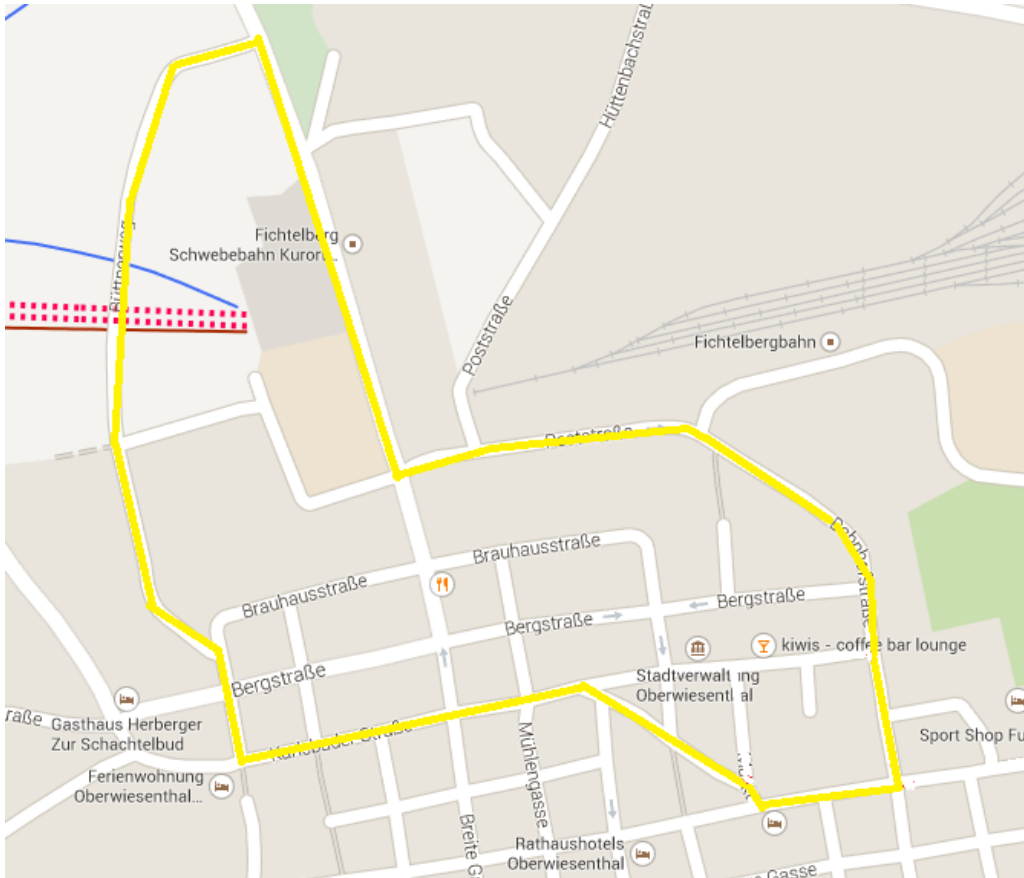
7. Jumping Hill

H-hcn

Hill - Outrun



## Course Team Sprint 2x 7.5 km



## Course Individual Gundersen 10 km

