



## Big Sky Resort 2018 FIS World Criterium

### Sunday, March 18, 2018

4:00pm - 8:00 pm Registration/Race Headquarters Shoshone Conference Center Canyon Room

### Monday, March 19, 2018

9:00am - 4:00 pm Registration/Race Headquarters Shoshone Conference Center Canyon Room

10:00am - 2:00pm Free Ski Race venues (closed to public skiing)

4:00pm Team Captains Meeting

6:00pm Welcome Reception Gallatin Room

### Tuesday, March 20, 2018 FIS World Criterium

7:30 - 9:30 am Registration/Race Headquarters Shoshone Conference Center Canyon Room

9:30am Group C/A Slalom (2 courses) Tippy's Tumble

9:30am Group B Super-G Big Horn

4:00pm Team Captains Meeting

5:00pm Awards Party Gallatin Room

### Wednesday, March 21, 2018 FIS World Criterium

Group B Day off

7:30 - 9:30 am Registration/Race Headquarters Shoshone Conference Center Canyon Room

9:30am Group A Super-G Big Horn

9:30am Group C Super G Hangman's

4:00pm Team Captains Meeting

5:00pm Awards Party Gallatin Room

### Thursday, March 22, 2018 FIS World Criterium

Group A Day off

9:30am Group B Slalom Tippy's Tumble

9:30am Group C Giant Slalom (2 runs) Hangman's

4:00pm Team Captains Meeting

5:00pm Awards Party Gallatin Room

### Friday, March 23, 2018 FIS World Criterium

Group C day off

9:30am Group B Giant Slalom (2 runs) Hangman's

9:30am Group A Giant Slalom (2 runs) Tippy's Tumble

4:00pm Team Captains Meeting

6:00pm Awards Party \*\*\* Banquet \*\*\* Gallatin Room

### Saturday, March 24, 2018 FIS World Criterium

9:00am Group B Giant Slalom (1 run) Hangman's

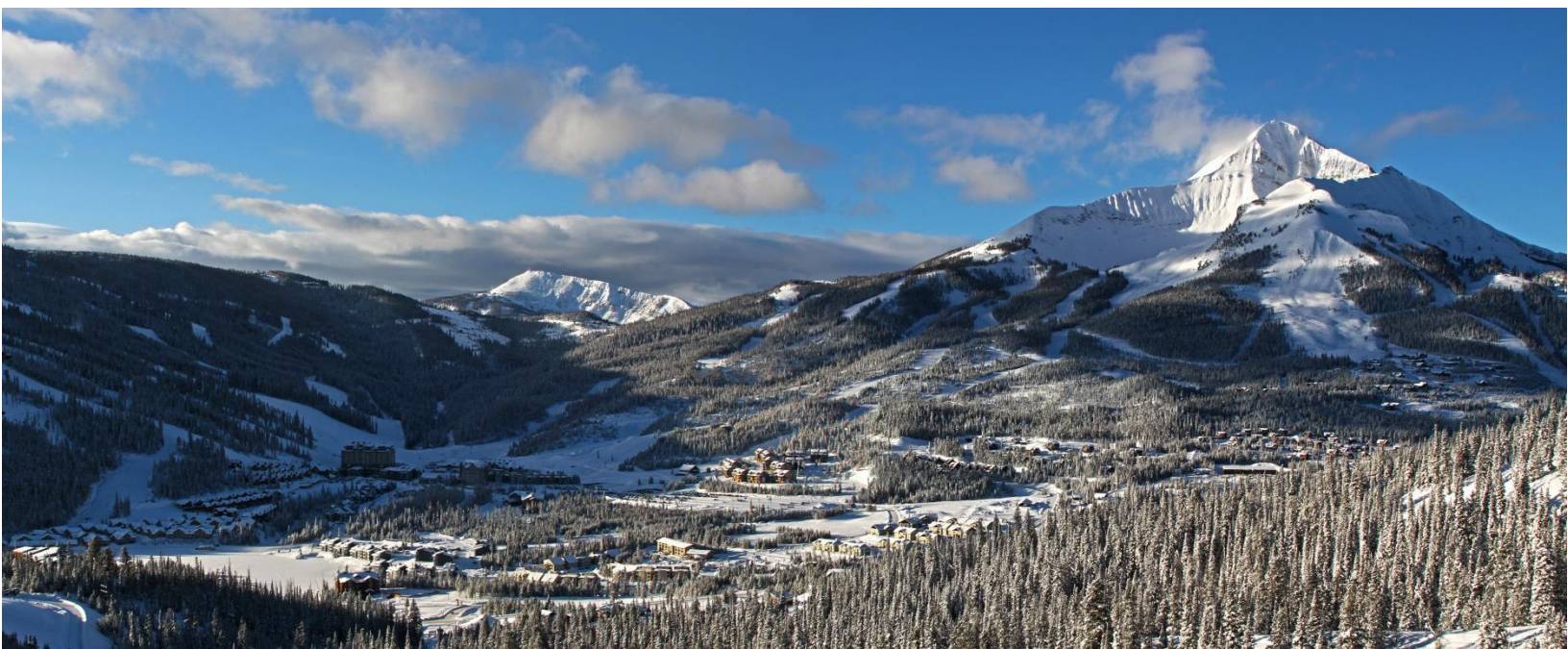
9:00am Group C Giant Slalom (1 run) Tippy's Tumble

12:00pm Group A Giant Slalom (1 Run) Tippy's Tumble

Immediately Awards Ceremony Finish area Tippy's

Last update: 10-May-2017

**Note: Schedule subject to change. Check Message board and announcements at Awards for updates.**



# Masters World Criterium 2018

---

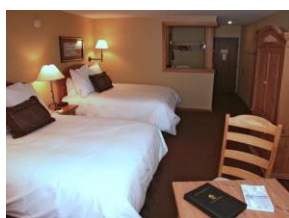
March 19-24, 2018

## LODGING OPTIONS

Sleep comfortably in one of our resort lodges, condos, or cabins in Big Sky, Montana, near Yellowstone National Park. Selections include slopeside or ski in, ski out accessibility. Listed below are discounted group lodging rates.

- Rates listed are per night and indicate whether pricing is based on occupancy or is a flat rate
- Children 10 and under stay free when in the same room as their parents with existing beds
- Rates do not include 19 % tax and service fees
- For more information on Big Sky Resort lodging properties, visit [bigskyresort.com/lodging](https://bigskyresort.com/lodging)
- **To book your reservations, please call 1-800-548-4486 and mention *The Masters World Criterium 2018***
- **Online booking link:** <https://lodging.bigskyresort.com/Trip-Planner/Set-View/group-world-criterium-2018/?GroupCode=10E827>

### HUNTLEY LODGE

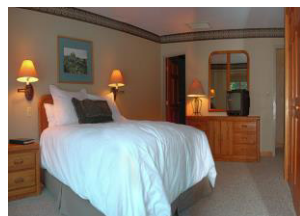


The Huntley Lodge is a three story hotel and was part of Chet Huntley's original vision. With recent remodeling, it's as tasteful as it is convenient.

<b>Guests per room</b>		<b>1</b>	<b>2</b>	<b>3</b>	<b>4</b>	<b>5</b>	<b>6</b>
First Class	2-4 guests	\$172	\$187	\$212	\$237		
Mtn. View	2-4 guests	\$187	\$202	\$227	\$252		
Loft	4-6 guests	\$237	\$252	\$277	\$302	\$327	\$352

*All Huntley Lodge Rates include a daily breakfast buffet in the Huntley Dining Room, plus gratuity for each guest.*

### SHOSHONE CONDOMINIUMS



The Shoshone Condominiums combines the service of a hotel with the comforts of a condominium. The seven-story landmark is attached to the Yellowstone Conference Center and the Huntley Lodge.

1-Bedroom Suite	2-4 guests	\$301
1-Bedroom Loft	2-4 guests	\$435

*All Shoshone Condo rates include a daily breakfast buffet in the Huntley Dining Room, plus gratuity for each guest.*

**SUMMIT HOTEL**



The Summit is an elegant Euro-western hotel at Big Sky Resort and is one of the finest slope side properties in the Rockies. It features eight residential levels, two public levels with reception, concierge, and the Talus room and Summit Board room for meetings. Guests can also enjoy a fitness center with an outdoor heated soaking pool, Peaks restaurant, Carabiner Lounge, Provisions resort wear and gift shop, coffee cart.

<b>Guests per room</b>		<b>1</b>	<b>2</b>	<b>3</b>	<b>4</b>
Studio	1-2 guests	\$219	\$234		
2-Queen Hotel	2-4 guests	\$254	\$269	\$294	\$319
1-King Hotel	1-2 guests	\$284	\$299		
1-Bedroom Suite	4-6 guests	\$458			

*All Summit rates include a daily breakfast buffet in Peaks Restaurant, plus gratuity for each guest.*

**BIG HORN CONDOMINIUMS**



The Big Horn condominiums are a home away from home. The units are spacious, well planned and especially comfortable for groups. Enjoy views of Lake Levinsky and Lone Mountain. Units are within ¼ mile from the mountain village and are within walking distance. The Bear Back Poma lift is across the street from these units.

2-Bedroom	4-6 guests	\$313
3-Bedroom	6-8 guests	\$428

## ACTIVITIES

---

Big Sky Resort is the Basecamp to Yellowstone and the perfect headquarters for mountain adventures. Basecamp can help your group arrange a variety of memory-making side trips to make your experience here even more enjoyable. [Things to Do](#)

- Ziplines
- High Ropes Course
- Snow Cat Dinners
- Snowmobile Tours
- Sleigh Rides
- Giant Swing
- Nordic Skiing
- Snowcoach Tours
- Snowshoe Tours
- Bungee Trampoline
- Ice Climbing
- Yellowstone National Park

## RESORT DINING OPTIONS

---

Whatever it is you're craving, Big Sky offers a great variety of restaurant selections to help make everyone in the group happy. [Dining Options](#)

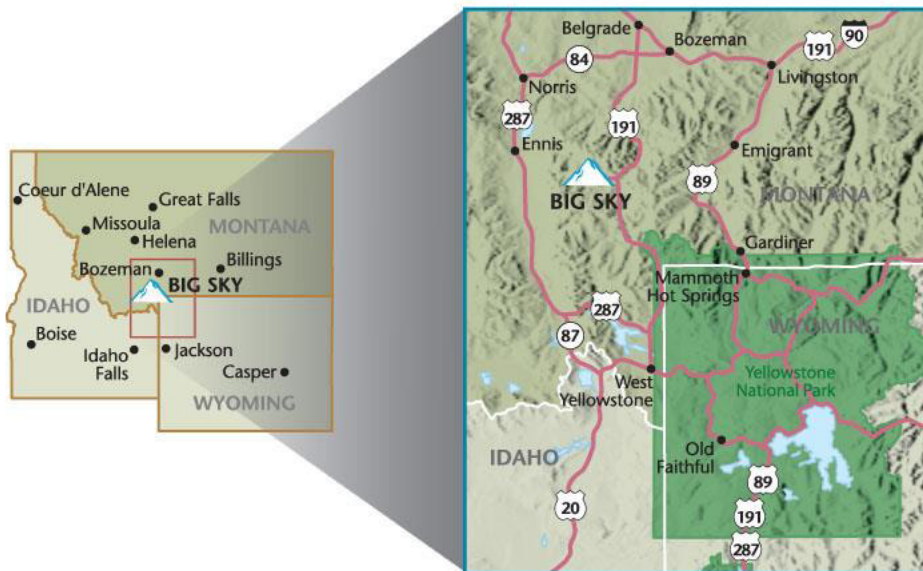
- Andiamo Italian Grille
- Everett's 8,800
- Headwaters Grille
- Carabiner Lounge
- Fondue Stube
- Montana Jack
- Chet's Bar & Grill
- Peaks Restaurant
- and many more...



## TRAVEL & TRANSPORTATION INFORMATION

---

Big Sky Resort is located midway between Bozeman and West Yellowstone in southwestern Montana on US Highway 191.



**AIR TRANSPORTATION**

Bozeman Yellowstone International Airport (BZN) in Bozeman, Montana has jet service daily on Delta, Alaska Airlines, United, Frontier Airlines and Allegiant. Visit [www.bozemanairport.com](http://www.bozemanairport.com) for a summary of flights. Direct Flights from:

- Atlanta
  - Houston
  - Minneapolis/St. Paul
  - Phoenix
  - San Francisco
- Chicago
  - Las Vegas
  - Newark
  - Portland
  - Seattle
- Denver
  - Los Angeles
  - New York LaGuardia
  - Salt Lake City
  - Dallas



**GROUND TRANSPORTATION**

Big Sky Resort is located approximately one hour (less than 50 miles) from the Bozeman Yellowstone International Airport (BZN). Ground transportation services are available to and from the airport as well as around Big Sky.

*Shuttles*

Karst Stage	406-556-3540	<a href="http://www.karststage.com">www.karststage.com</a>
Shuttle to Big Sky & Taxi	406-995-4895	<a href="http://www.bigskytaxi.com">www.bigskytaxi.com</a>
Classic Limo	406-585-5466	<a href="http://www.bozemanlimo.com">www.bozemanlimo.com</a>

*Public Transportation*

Skyline Bus	406-995-6BUS	<a href="http://www.skylinebus.com">www.skylinebus.com</a>
-------------	--------------	--

*Car Rentals*

Rental agencies located in the airport include: Avis, Hertz, Budget, Thrifty



