



**FIS SNOWBOARD CROSS  
WORLD CUP 2019**



**SPAINSNOW**  
REAL FEDERACIÓN ESPAÑOLA DEPORTES DE INVIERNO

**BAQUEIRA/BERET**

## TEAM INVITATION

The Organizing Committee (LOC) of Baqueira Beret – SPAINSNOW World Cup is pleased to invite all the National Ski Associations to attend the Snowboard FIS World Cup to be held in Baqueira Beret Ski Resort in Spain March 2<sup>nd</sup> 2019. The competition is composed of one race (ladies and men) in SBX, qualifications will be held on March 1st. The Organizing Committee will host the event in accordance with the International Ski Competition Rules (I.C.R.) of FIS.

## ENTRIES

Will only be accepted from National Ski & Snowboard Associations in accordance with FIS quotas and rules for the World Cup. The regular World Cup quota applies.

Entries will be accepted in accordance with the FIS quotas and rules. All entries must be done using the FIS Online Registration System, through the FIS Homepage: <http://www.fis-ski.com/> "Member Section". Entries by mail or fax are no longer accepted.

Please update the final entries until **February 15th, 2019** (Final entry deadline).

**Contact Person: Ms VIDAL, Mónica**

**Office: + 34 973 639 038**

E-mail information: [worldcup@baqueira.es](mailto:worldcup@baqueira.es)



[www.baqueira.es](http://www.baqueira.es)  
[#baqueirasbx](https://twitter.com/baqueirasbx)





**FIS SNOWBOARD CROSS  
WORLD CUP 2019**



**SPAINSNOW**  
REAL FEDERACIÓN ESPAÑOLA DEPORTES DE INVIERNO

 **BAQUEIRA/BERET**

## ACCREDITATION

Team accreditation will take place daily, starting on Tuesday, February 26<sup>th</sup> 2019 from 9:00 am to 6:00 pm, at the Accreditation Office, at:

**Hotel Tryp Vielha,  
Carrer Aneto nº 1  
25530 Vielha  
Lleida, Spain**

### How to get there

**Link to:**

**<https://www.google.com/maps/place/TRYP+Vielha+Baqueira/@42.7007483,0.798902,460m/data=!3m1!1e3!4m7!3m6!1s0x12a89cd3efe06d27:0x49be162eadfc6071!5m1!1s2018-10-16!8m2!3d42.7005034!4d0.8003542>**

## RACE OFFICE & TEAM CAPTAINS MEETING

Will be located in the Hotel Tryp Vielha, Vielha (see attached map)

## ACCOMMODATION

Please note that accommodation will be available at the FIS rate for the dates of the program only. Early arrivals and late departures are subject to availability and are not available at FIS rate.

According to the FIS Rules, the rates are CHF 80/day per team members (athletes and team officials) for accommodation, half board.

Each team will be held responsible for any damage incurred during the stay.

The teams or athletes themselves must pay any kind of extras. "No Shows" become charged to the National Associations directly at the Hotel.



[www.baqueira.es](http://www.baqueira.es)  
[#baqueirasbx](https://twitter.com/baqueirasbx)





**FIS SNOWBOARD CROSS  
WORLD CUP 2019**



**SPAINSNOW**  
REAL FEDERACIÓN ESPAÑOLA DEPORTES DE INVIERNO

 **BAQUEIRA/BERET**

All check-ins and rooms registration will take place at the hospitality desk at the hotel. Accommodation will be provided as follows:

Price for extra night: 87€/person/taxes included in double room with full board. The teams are advised to accommodate the team members in double rooms because of the amount of rooms available. If teams need extra single rooms compared to the FIS WC regulations, the price is 132€/room/taxes included with full board for the extra nights.

The payment has to be done directly to the OC - accommodation, before arrivals by credit card or by bank transfer.

The fixed exchange rate will be:  
1CHF = Euro 0,87

The State Government requires all tourism establishments to implement starting November 1st 2012 a tourist tax (1€ per Day up to a maximum of 7 days).

The payment of this tax has to be done, by each team, directly to the hotel.

## **LUNCH TICKETS**

The LOC will offer lunch tickets in a special price WCSBX BB19 to all the teams and participants. These tickets will be available at Race Office at the price of 14,95 €.



[www.baqueira.es](http://www.baqueira.es)  
[#baqueirasbx](https://twitter.com/baqueirasbx)





**FIS SNOWBOARD CROSS  
WORLD CUP 2019**



**SPAINSNOW**  
REAL FEDERACIÓN ESPAÑOLA DEPORTES DE INVIERNO

**BAQUEIRA/BERET**

## PARTICIPATION FEE

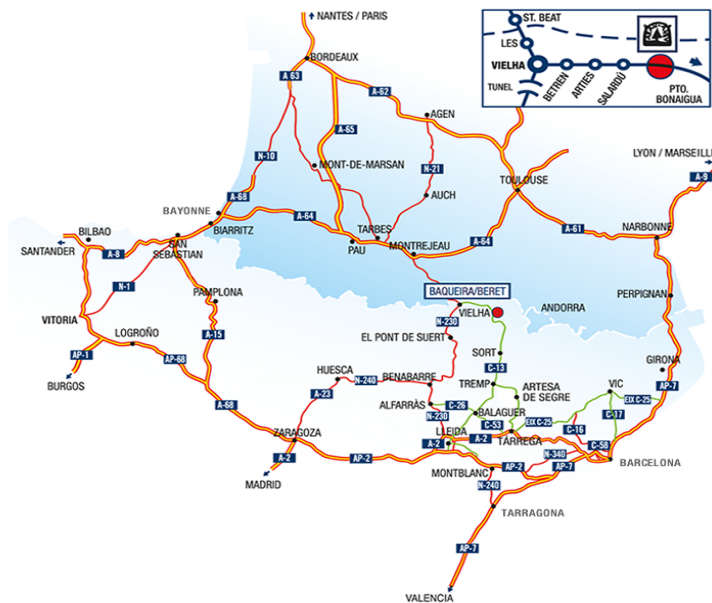
According to the FIS Snowboard World Cup Rules, a mandatory participation fee will be charged of CHF 30 per official training, qualification and competition day for SBX. Total costs per competitor will be CHF 90.

The participation fee has to be paid at the race office before the competition.

## SKI RESORT LOCATION

### Address:

Baqueira Beret Ski Resort  
Afores s/n, Baqueira, Naut Aran  
25598, Lleida, Spain



BAQUEIRA/BERET

Catalana  
Occidente  
Seguros



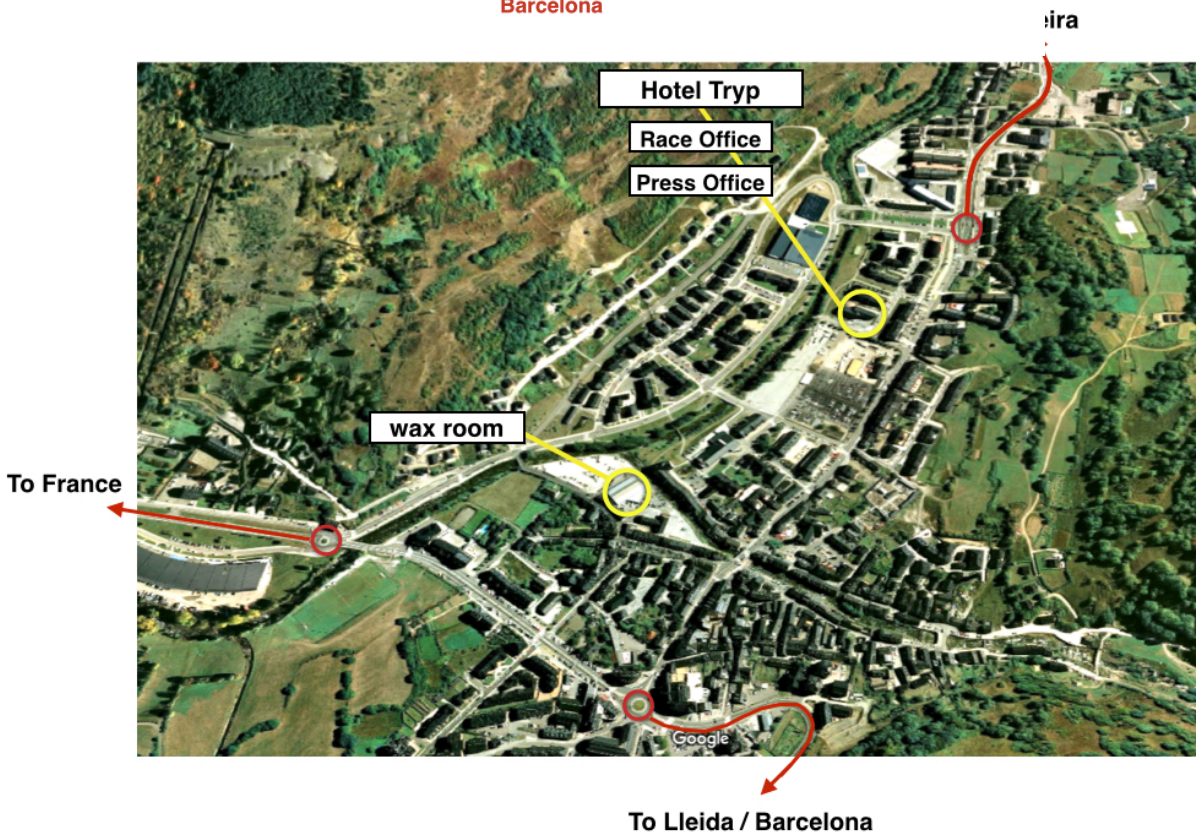
[www.baqueira.es](http://www.baqueira.es)  
#baqueirasbx

esportcat

Diputació de Lleida

Ajuntament  
Naut Aran

VAL D'ARAN  
The essence of the Pyrenees



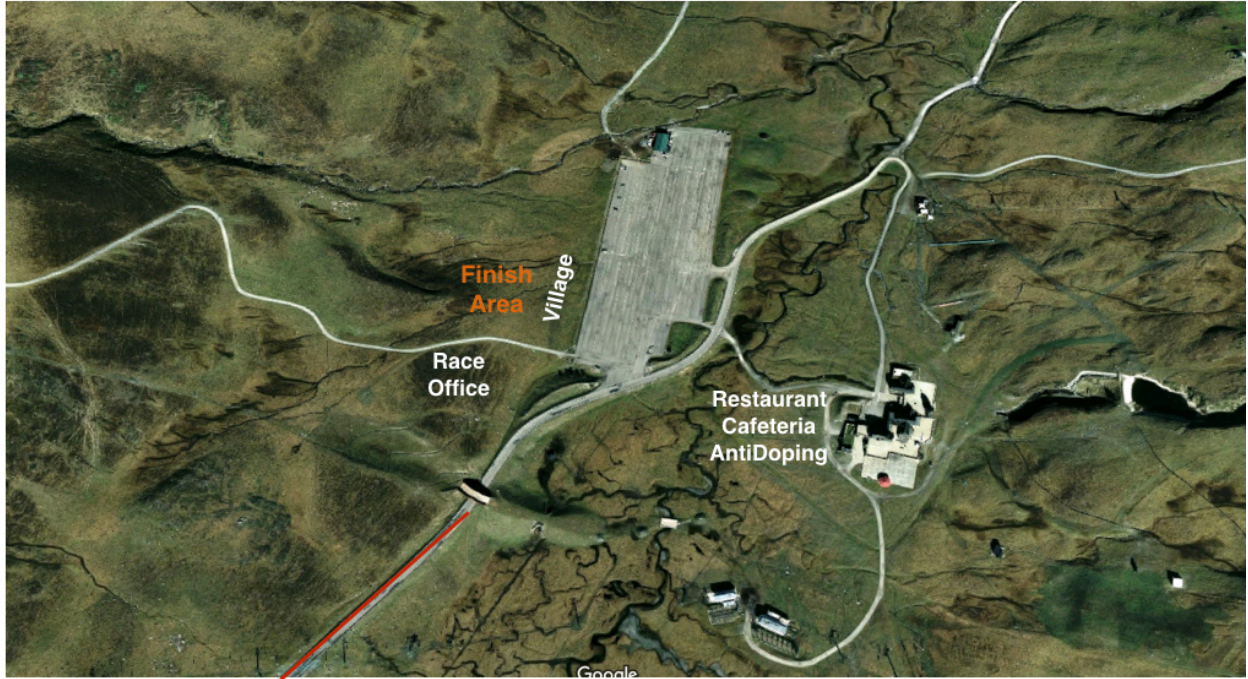


**FIS SNOWBOARD CROSS  
WORLD CUP 2019**



**SPAINSNOW**  
REAL FEDERACIÓN ESPAÑOLA DEPORTES DE INVIERNO

**BAQUEIRA/BERET**



**To Baqueira**



[www.baqueira.es](http://www.baqueira.es)  
[#baqueirasbx](https://twitter.com/baqueirasbx)



## BY CAR

- **FROM BARCELONA (340 km)**

By AP-2 motorway Barcelona -Lleida > N-230 Alfarrás- Benabarre - Pont de de Suert – Vielha – Baqueira (Val d’Aran)

- **FROM BARCELONA (323 km)**

By A-2 road Barcelona - Cervera - Tarrega > C-53 Balaguer > C-26 Alfarrás > N-230 to Benabarre - Pont de Suert - Vielha – Baqueira (Val d’Aran)

- **FROM BARCELONA – TO PALLARS SOBIRÀ (293 km)**

By A-2 road Barcelona - Cervera - Agramunt > Artesa de Segre > Tremp - Pobla de Segur - Sort - Esterri d’Aneu - Port de la Bonaigua.

- **FROM MADRID (550 km)**

A-2 road Madrid - Zaragoza - Huesca > N-240 to Barbastro > N-123 to Benabarre > N-230 to Pont de Suert - Vielha – Baqueira (Val d’Aran)

- **FROM MADRID (650 km)**

A-2 road Madrid - Zaragoza, AP-2 motorway to Lleida, exit 5, A-2 road Lleida - Barcelona, 461 exit > N-230 to Benabarre - Pont de Suert - Vielha – Baqueira (Val d’Aran)

- **FROM TOULOUSE (166 km)**

A-64 motorway Toulouse > A64/E80 direction Pau/Tarbes, exit 17 Montrejeau > St. Beat, Vielha – Baqueira (Val d’Aran)

## BY TRAIN

- **AVE (high-speed train) Madrid-Lleida-Madrid**

Transport from AVE (high-speed train) **Lleida-Baqueira-Lleida**

Consult information and prices of our weekly service exclusively for ski package holidays. Ask for information at our booking office.

### Nearest railway stations.

In Spain: Lleida (170 km)

In France: Montrejeau ( 60 km)



**FIS SNOWBOARD CROSS  
WORLD CUP 2019**



**SPAINSNOW**  
REAL FEDERACIÓN ESPAÑOLA DEPORTES DE INVIERNO

 **BAQUEIRA/BERET**

## BY PLANE

### AIRPORTS SPAIN

- Barcelona, 350 km

### AIRPORTS FRANCE

- Toulouse, 166 km
- Tarbes, 136 km

## TRANSPORTATION

Teams will be responsible for their own transportation to and from Baqueira Beret Ski Resort and Barcelona or Toulouse Airports. The Organizing Committee can suggest the teams to find transportation to Baqueira Beret from these airports on the attached link:

LINK To:

<http://www.visitvaldaran.com/en/discover-val-daran/moving-in-the-valley/>

## EVENT MEDIA SERVICE

For any media issue or accreditations please contact:

Toti Rosselló: [media@baqueira.es](mailto:media@baqueira.es) +34 670 763 555

Xènia Fortea: [xfortea@xcommunication.es](mailto:xfortea@xcommunication.es) +34 607 754 170

## LIABILITY

All athletes, officials and other representatives of National Associations will attend at their own risk. The organizer declines any liability for damages or injuries of athletes, officials or any other persons. All participants have to be sufficiently insured against accidents and illness by themselves or their National Association.



[www.baqueira.es](http://www.baqueira.es)  
#baqueirasbx







**FIS SNOWBOARD CROSS  
WORLD CUP 2019**



**SPAINSNOW**  
REAL FEDERACIÓN ESPAÑOLA DEPORTES DE INVIERNO

**BAQUEIRA/BERET**

## ANTI-DOPING CONTROL

Anti-Doping control testing may be conducted in accordance with the rules and regulations set forth by FIS.

## FINANCIAL INFORMATION

### PRIZE MONEY

According to the Spanish law, the rate for sport performances is 19% for residents in the European Union and a 24% for non-residents in the European Union.

From the last year according the Spanish law, it's not possible to make payments of more than € 2.500 in cash. Transfers will be done on March 3rd and forwarded the appropriate checked. The winners must come to Baqueira Beret Race Office to complete and fulfill the personal information and bank account number to be able to make the bank transfer.

## TECHNICAL ORGANIGRAMM

FIS Race Director:	Mr. Uwe Beier - FIS
Technical Delegate:	Mr. Joel Franitch
Assistant Race Director:	Mr. Alberto Schiavon
Course Builder:	Mr. Nick Roma & Mr. Todd Main
Media:	Chad



[www.baqueira.es](http://www.baqueira.es)  
[#baqueirasbx](https://twitter.com/baqueirasbx)





## FIS Snowboard World Cup Snowboard Cross – Baqueira Beret (SPA)

Preliminary Program as of 14.12.2018 (subject to changes)

Official Arrival Day: Tuesday March 26<sup>th</sup> 2019 - TC Informational Meeting 26<sup>th</sup>, 18.00 Hotel Tryp Vielha

	Course Testing SBX/ Course Inspection	Training SBX	Qualification SBX (40 Women/70 Men)	SBX Finals (16 Women/ 32 Men)
	Wednesday, 27.02.2019	Thursday, 28.02.2019	Friday, 01.03.2019	Saturday, 02.03.2019
Race Office Opening	09.00-18.00	09.00 - 18.00	09.00-18.00	09.00-18.00
Lift open:	09.00	08.30 (teams)	08.30 (teams)	09.00
Inspection/ Training/ Forerunners/ Qualification:	11.00-11.30 General Inspection (all) 11.20 closed at start 11.30-12.15 Course Testing (testers)  Directly following: Testers, coaches, athletes representatives & Jury Meeting in the finish	09.30-09.45 Inspection Men 10.00-11.30 Training Men 11.30-11.45 Inspection Women 11.45-12.00 Course Preparation 12.00-13.30 Training Women 14.00-14.05 Forerunners Women	09.30-09.45 Inspection Men 10.00-10.45 Training Men 11.00-11.05 Forerunners Men 11.05-12.30 Qualification Men 12.30-12.45 Inspection Women 13.00-13.45 Training Women 14.00-14.05 Forerunners Women 14.05-15.00 Qualification Women	
Start interval:			1-70 – 0.50 min = 58min + 38min = 96min 1-40 – 0.50 min = 33 min + 23min = 56min 2 x Break à 10 min = 20min = 172min	
Timed run:			Approx. 1 min	
Video Control:		FIS	FIS	FIS
Inspection/Training Finale:				11.45 - 12.00 Inspection 12.15 -13.00 Training
Entry for all closed:				13.15
Forerunners (4):				13.20
Start Time Final:		-		<b>13.30-14.50 FINALS SBX</b>
Start interval:				1/8 Fm 8 H à 2.30 min = 20 min 1/4 Fw+m 8 H à 2.30 min = 20 min SRQ + 1/2 Fw+m 8 H à 2.30 min = 15 min CON + F w+m 8 H à 2.30 min = 15 min Awards WC + WC overall = 15 min 85 min
Winners Presentation				Immediately after the race in the finish
Prize giving ceremony:		-	-	
Team Captains Meeting:		18.00 Hotel Tryp Vielha	18.00 Hotel Tryp Vielha	
Training:				
TD:	Joel Franitch, FRA	Joel Franitch, FRA	Joel Franitch, FRA	Joel Franitch, FRA
Miscellaneous:	Daily: coaches, athletes repres. & Jury Meeting in the finish	Skidoos in Training, base section only Jury Meeting in the finish	Skidoos in Training, base section only Quali: 1-2 skidoos on stand-by for re-runs	Skidoos after 1/4 finals <b>Departure Day: Sunday 03.03.2019</b>

FÉDÉRATION INTERNATIONALE DE SKI  
INTERNATIONAL SKI FEDERATION  
INTERNATIONALER SKI VERBAND