



**VAL GARDENA | GRÖDEN**

**FIS Ski World Cup**

[www.saslong.org](http://www.saslong.org)

# **GENERAL INFO BOOKLET**

**AUDI FIS SKI WORLD CUP**

**VAL GARDENA - GRÖDEN**

**53. Saslong Classic**

**18.-19.12.2020**



## TABLE OF CONTENTS

<b>GENERAL RULES</b>	<b>3</b>
- Basics / General rules of conduct	3
- Travel restrictions	3
- Arrival to Val Gardena/Gröden	4
- Accreditation	4
o TABLE 1.1	5
- COVID-19 Test center	6
- COVID-19 Organization chart	7
o Appendix 2.1	7
- COVID-19 Communication	7
- Leisure activities during the stay	7
<b>TEAMS AND EQUIPMENT PARTNERS</b>	<b>8</b>
- Team hotels	8
- Race office	8
- Directions from the hotel to the event site	8
- Event area	8
- Training	9
- Cable car Saslong-Ciampinoi	9
- Start	9
o Appendix 2.2	10
- Team hospitality	10
o Appendix 2.3	11
- Barriers at the finish / mixed zone	11
o Appendix 2.4	12
- Award ceremony at the finish area	12
- Course crew	13
<b>MEDIA</b>	<b>13</b>
- On site	13
- Transportation	13
- Press office	13
o Appendix 2.5	14
- Press conference	15
- TV cabins	15
- Photo Zones	15



# GENERAL RULES

## COVID-19 SAFETY PROTOCOL

The AUDI FIS Ski World Cup in Val Gardena/Gröden will be held on 18 and 19 December 2020 under increased safety measures. The event will therefore be held without an audience. Only accredited persons who have to be on site for work purposes are admitted to the event.

## BASICS / GENERAL RULES OF CONDUCT

- It is the responsibility of every person to adhere to this policy
- Respect hygiene measures
- Wash hands regularly and thoroughly
- Regular and correct use of provided disinfectant dispensers
- It is obligatory to wear a mask or a mouth and nose protector in ALL areas (in closed rooms, in shuttle buses, in the cable cars, on chair lifts, in all public places)
- Cover your mouth and nose with your bent elbow when sneezing or coughing
- A minimum distance of 1,5 m with mask applies everywhere
- Avoid shaking hands
- Avoid personal contacts or limit them to the absolute minimum. This also applies to the time outside the event area!
- Avoid contact with people who do not belong to your group (RED/ YELLOW/ BLUE) as much as possible
- Check your own health situation daily (if you feel ill and suffer from symptoms such as fever, cough, rhinitis, conjunctivitis or other flu symptoms, stay in your room and call the SOS COVID-19 number +39 337 122255). In this case the protocol of the South Tyrolean Sanitary Service applies and an environment analysis is carried out.
- Temperature checks in the morning at the entrances to the event site (entrance to the cable car, finish area, press office, race office, etc.): if a temperature of  $>37.5^{\circ}$  Celsius registers on the scanner, the person is reported to the SCC COVID-19 coordinator)

**We appeal to ALL individual(s) to act responsibly and to adhere to all safety measures and recommendations. Our stewards are required to monitor the implementation of the COVID-19 guidelines. For your own safety and the safety of all other people present, it is essential that you follow the instructions of the stewards. We reserve the right to exclude persons from the event and take legal action against those who do not comply with the COVID-19 guidelines. The organizer also reserves the right to make any necessary changes to the regulations, which will be communicated immediately.**



## TRAVEL RESTRICTIONS

Information regarding entry into Italy from all countries can be found here:

<http://www.salute.gov.it/portale/nuovocoronavirus/dettaglioContenutiNuovoCoronavirus.jsp?lingua=english&id=5412&area=nuovoCoronavirus&menu=vuoto>

At this time (9 November 2020) the following travel restrictions apply:

- Citizens can enter South Tyrol/Italy from the EU, the Schengen area, the United Kingdom and Northern Ireland, Andorra and Monaco, but must submit a self-declaration. Entry is allowed for any reason, also for tourists.
- The self-declaration is available for download here:  
[https://www.esteri.it/mae/resource/doc/2020/08/self-declaration\\_in\\_case\\_of\\_entry\\_into\\_italy\\_from\\_abroad\\_-\\_form\\_14\\_08.pdf](https://www.esteri.it/mae/resource/doc/2020/08/self-declaration_in_case_of_entry_into_italy_from_abroad_-_form_14_08.pdf)
- For travel by car, it is not necessary to keep a minimum distance of 1,5 meter if all passengers wear a mouth and nose protector. If all passengers live in the same household, it is not necessary to wear a mouth and nose protector.

Should the entry restrictions be changed, the OC will immediately send an update.

## JOURNEY TO VAL GARDENA/GRÖDEN

- Do not travel to the event location if you show any COVID-19 symptoms
- If persons close to you or people in your environment are ill with COVID-19, please call the SOS COVID-19 number +39 337 1222255
- Avoid stop-overs on your way to the venue
- Avoid personal contact with other people - especially team members

## ACCREDITATION

- Due to the current situation, we as organizers must limit the number of accredited persons; please only accredit people who are really working during the World Cup races
- In addition to the registration and upload of the PCR test or the antigen test (based on the DPCM of 03.12.2020) on the FIS Passport, the accreditation request on the SCC accreditation system Eventbuilder will be accessible (differs by accreditation group according to table 1.1)
- All persons applying for accreditation go through three phases:
  - Phase 1: Accreditation request and Filling out a form (Whereabout), in which you state your state of health before arriving at the venue. According to the guidelines, the deadlines for filling out and submitting the form are
  - Phase 2: The person in charge (assigned doctor) checks the form and signs off on the accreditation application. All persons who have submitted an application for accreditation - Phase 1 - and have passed Phase 2 will receive an e-mail notification that they must contact the COVID Test Center to perform the rapid antigen test
  - Phase 3: Perform the rapid antigen test at the SCC COVID-19 test center in Selva/Wolkenstein. If the rapid antigen test is negative, the responsible doctor authorizes the issuance of the accreditation. If the rapid antigen test is positive, the procedure is followed as described below.
- Only then can the accredited person go to the accreditation center to pick up the accreditation.

The security plan provides that only the following persons should be granted access (accreditation) to the event. All attending persons are divided into groups (COLORS) and registered by the accreditation software "Eventbuilder" with name, surname, phone number and group.

**TABLE 1.1**

Accreditation Group	Number	Tests Required	Accreditation Issuance
<b>A GROUP - GROUP RED</b> Athletes, coaches, support, service, SRS, FIS, Timing & Data <i>SCC employees: closest management, start/finish/team hospitality/racing office, shuttle/taxi driver, rescue, Carabinieri/police</i>	500 people	PCR test or antigen test in advance on FIS PASSPORT (except for SCC employees) + SCC antigen test on arrival	Accreditation Center - Cultural Center "Oswald von Wolkenstein" in Selva/Wolkenstein
<b>B GROUP - GROUP BLUE</b> Production along the racing track and at the start/finish area, helpers and employees, external companies	320 people	SCC antigen test required (before picking up the accreditation)	Accreditation Center - Cultural Center "Oswald von Wolkenstein" in Selva/Wolkenstein
<b>C GROUP - GROUP YELLOW</b> Media (Host Broadcaster, other TV stations, print and online journalists, photographers, radio, staff press office)	230 people	PCR test or antigen test in advance on FIS PASSPORT (except for SCC employees) + SCC antigen test on arrival	Accreditation Center - Cultural Center "Oswald von Wolkenstein" in Selva/Wolkenstein
<b>Total</b>	<b>1050 people</b>		

In addition to the accreditation, each person will receive an identification bracelet in the color of the group to which the individual belongs.

Furthermore, in addition to the PCR test or antigen test uploaded on the FIS Passport, the Organizing Committee, in collaboration with the local health service, requires all persons applying for accreditation to undergo one more rapid antigen test at arrival.

According to the above table, the RED group and the YELLOW group must upload a PCR test or antigen test not older than 72 hours to the FIS PASSPORT page before arrival. As soon as the persons of this group arrive in Val Gardena/Gröden, they must also undergo one more rapid antigen test. If this rapid antigen test is negative, the person can pick up the accreditation in the accreditation center in the Cultural Center "Oswald von Wolkenstein" in Selva/Wolkenstein.



If this rapid antigen test is positive, the PCR test or antigen test which was uploaded in advance to the FIS PASSPORT page by the individual, will be checked and protocol of the South Tyrolean Sanitary Service applies.

If this new PCR test is negative, the person can pick up the accreditation.

Attention: the PCR test or antigen test must be uploaded on the FIS PASSPORT before arrival in Val Gardena/Gröden (the test must be not older as 72 hours before arrival). This test can in case be performed at own expense at the private "Dolomiti Sportclinic" in Ortisei <https://www.dolomiti-sportclinic.com/it/>. Info & Reservation: +39 0471 086 000, [info@dolomiti-sportclinic.com](mailto:info@dolomiti-sportclinic.com). Attention: the evaluation time of the tests are from 12 h – 76 h.

## **SCC COVID-19 TEST CENTER**

At the SSC COVID-19 Test Center, the persons to be accredited must undergo a rapid antigen test. The rapid antigen test must be performed in addition to the PCR test or antigen test (only for the specified groups), which is provided for by the FIS in advance.

The COVID-19 test center is located on the first floor of the Cultural center "Oswald von Wolkenstein" in Meisulesstr. 146, 39048 Selva Gardena (BZ).

Each person will be informed by the Saslong Classic Club through the accreditation system on which day and at which time they have to present themselves for the antigen rapid test.

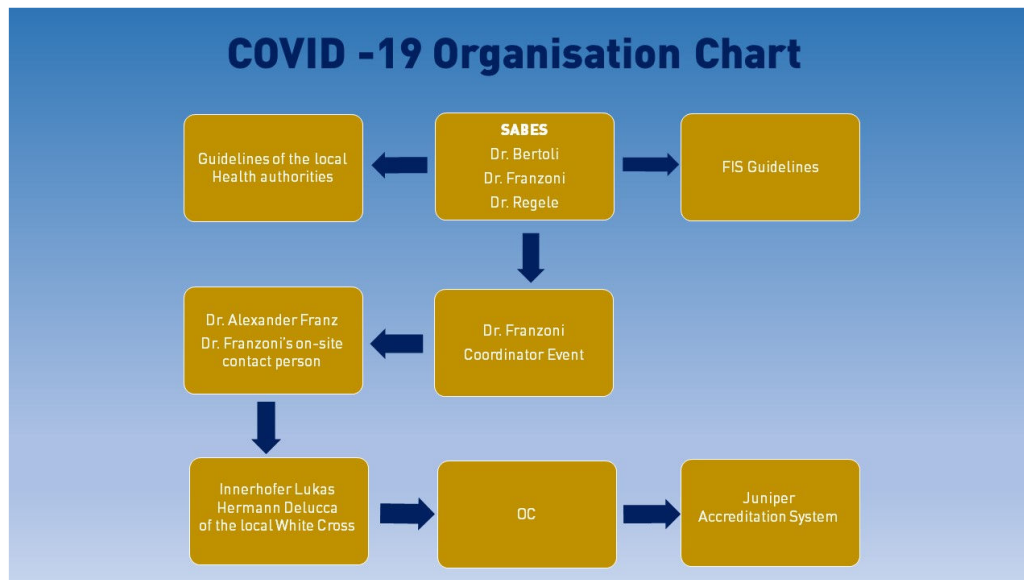
Responsible for the test procedure on behalf of the SCC are the South Tyrolean Sanitary Service and the White Cross.

The result of the rapid test is announced within 15-30 minutes, the PCR test within 12 hours.

Please book your antigen test in advance writing on the following e-mail: [xenia.schenk@saslong.org](mailto:xenia.schenk@saslong.org) or call +39 334 6878225.

## COVID ORGANIZATION CHART

### ANNEX 2.1



## COVID-19 COMMUNICATION

- If symptoms occur, call the COVID-19 number +39 337 122255
- The organizing committee will put into action all COVID-19 security measures
- Communication regarding COVID-19 must be discussed and clarified with the FIS and the Organizing Committee.

## LEISURE ACTIVITIES DURING YOUR STAY IN VAL GARDENA/GRÖDEN

- During all recreational activities, follow COVID-19 safety and hygiene rules such as keeping your distance, wearing a mouth-nose guard, and avoiding personal contact
- Limit your leisure activities to the most necessary purchases and errands
- Spend your free time exclusively with members of your team or group
- To keep the risk of infection as low as possible, the Organizing Committee recommends:
  - Staying only in small groups
  - Avoiding contact with the teams
  - Restricting contact with other people
  - Avoiding contact with tourists/fans
  - Keeping your distance, washing your hands frequently or disinfecting them often



## TEAMS AND EQUIPMENT PARTNERS

### TEAM HOTELS

- Only 1 team per hotel
- Check-in is only carried out if the person has been accredited and therefore has a negative test which allowed him to obtain the accreditation
- Check-in procedure must be carried out with mouth-and-nose protection and the minimum distance must be observed
- The rooms of a team should all be on the same floor
- If possible, beds in a double room should be separated
- Dinner should be served in a separate room or ahead of residing hotel guests (e.g. already at 7 pm)
- Avoid using the elevators
- Use of the fitness room / swimming pools / sauna etc. for athletes is only guaranteed if they are reserved especially for athletes. No gymnastic exercises in the corridor.
- The hotel must guarantee that the athletes have as little contact as possible with the other hotel guests
- Own rooms for SRS (Bootfitters + material) outside the Team Hotels.  
Address: Str. Dursan 25, 39047 S.Cristina. Information and registration with Riccardo Zanoni: srsservice@srsski.com

### RACE OFFICE (approx. 327 square meter)

- The Team Captains' Meeting will be held in the race office (it could be that the TCM will be help via streaming – tbc) and accreditations for the RED and BLUE groups will be handed out in a separate room
- Team Captains' Meeting:
  - With limited number of participants (1 representative per team + doctors + FIS + SCC closest management) - maximum 50 persons
  - Minimum distance between the chairs
  - Wearing masks is obligatory
- Accreditation Office:
  - Accreditations for RED and BLUE groups can be picked up here (see required tests on TABLE 1.1)

### HOW TO GET FROM THE HOTEL TO THE EVENT SITE

- The organizing committee provides shuttle buses
- Avoid stop-overs on your way from the hotel to the event site

### EVENT AREA

- Temperature check at the entrance
- Obligation to wear masks
- It is the responsibility of every person to adhere to this policy





- Observe distancing rules
- Pay attention when entering the different areas: Color of the wristband shows where the person has access
- Stay exclusively in the zones designated to your accreditation group
- The different zones are closed and only accessible to accredited persons
- Avoid direct contact with the teams and wear a mouth and nose protector
- There is an isolation room near the event area in case of symptoms

## **TRAINING**

- There is no training possibility on Monday and Tuesday
- Wednesday and Thursday official training on the Saslong

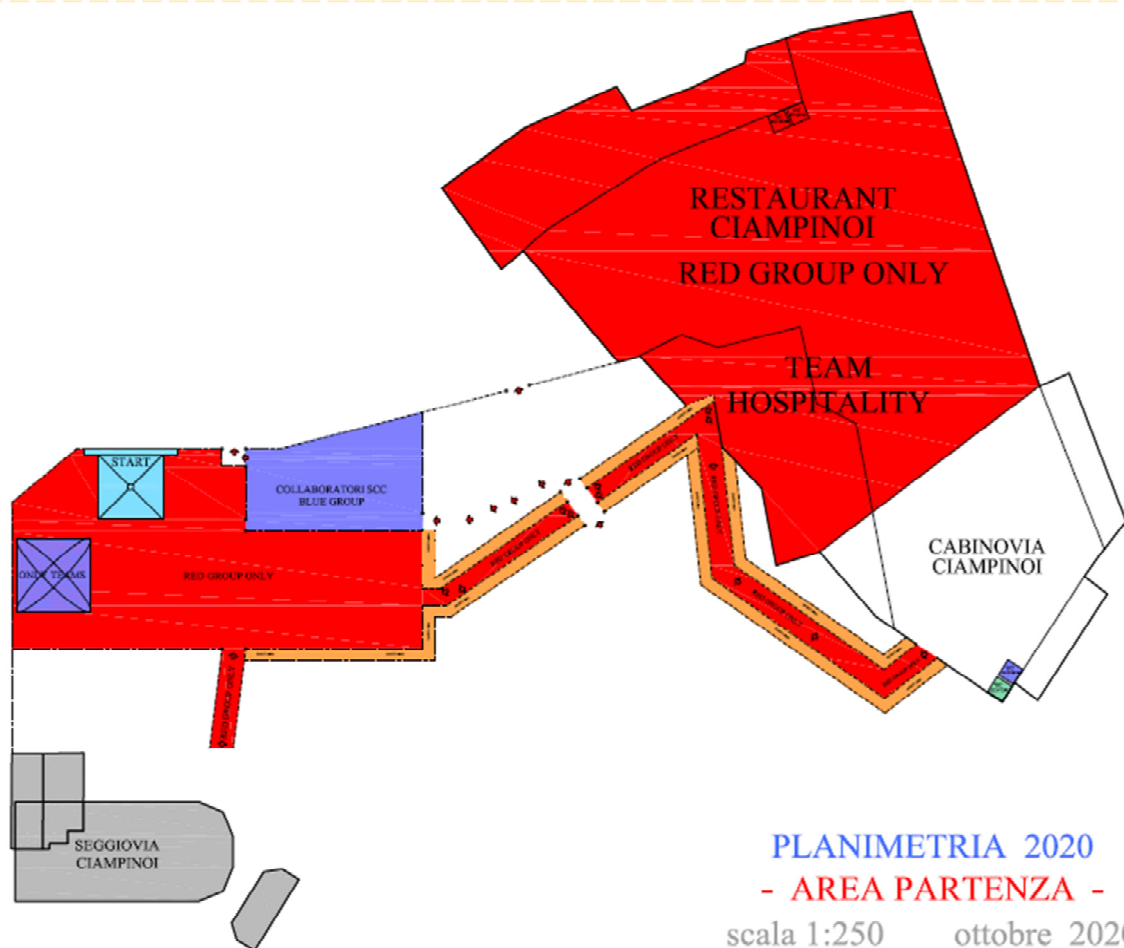
## **CABLE CAR SASLONG AND CIAMPINOI**

- Temperature check for everyone in the morning at the cable car (an employee of the White Cross will be on site in the event of a temperature registration above 37.5° Celsius)
- Separate entrance and exit for athletes / coaches (group RED)
- Mandatory masks in the cabin
- Reserved cabins for athletes and teams
- A maximum of four people may travel in one cabin and all people must be from the same team/work group
- One-way routes for athletes from the finish area to the cable car
- One-way barriers for athletes from the cable car to the team hospitality and to the start
- RED and BLUE Group must not use the same cabins and should never mix

## **START**

- The start area is reserved for athletes, team members and start personnel (in any case all with RED arm ribbons); it is fenced in and cannot be entered by staff (except with RED ribbon) and guests.
- Start tent: max. 1 athlete + 2 team members with masks
- 1 Start Judge, 1 Swiss Timing Starter, 1 Hand Timing, 1 Access Controller (all with mandatory masks)
- In the warm-up tent (not closed) a distance of 1,5 meter must be kept.
- The starting numbers will be handed out by only 1 person (with RED ribbon) and only in the open
- Observe mask obligation and distancing

## APPENDIX 2.2

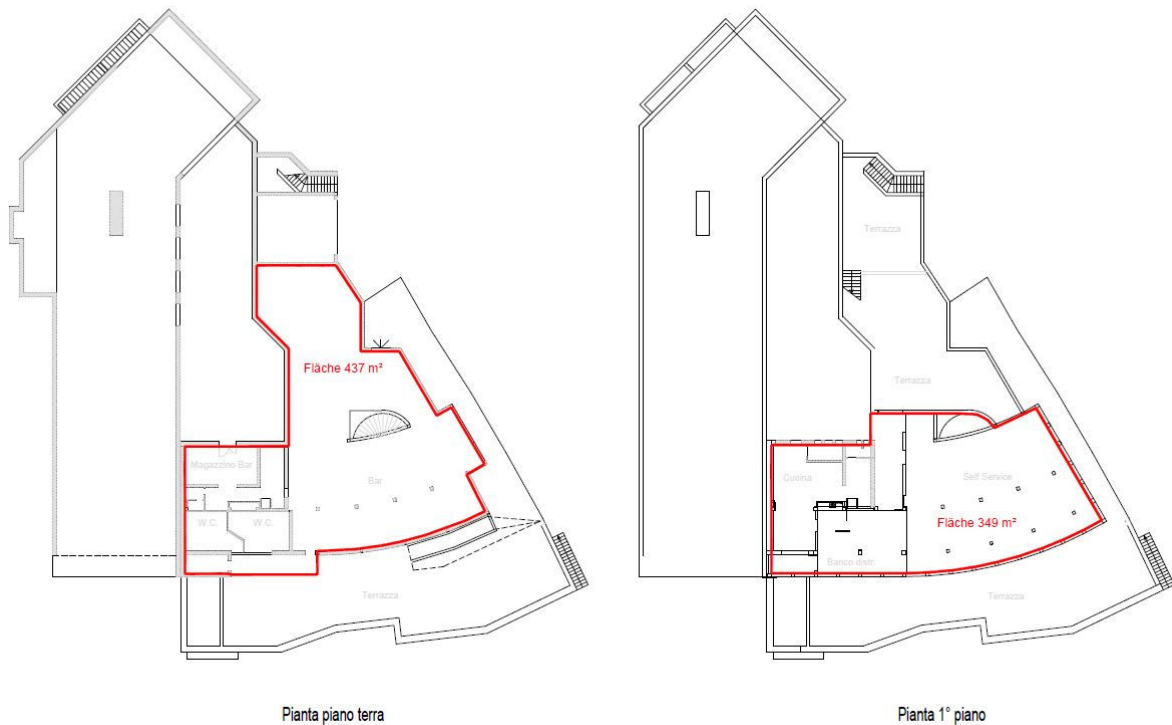


### **TEAM HOSPITALITY (approx. 800 square meters – 2 floors)**

- Both floors are reserved for the OC - no bar service for skiers
- The entrance is limited to athletes, coaches, support, service, SRS and some members of the OC (number 9 on accreditation/ RED ribbon)
- Temperature check at the entrance (you cannot enter the hall if temperature registers above 37.5° Celsius) by White Cross team
- Our employees are tested and wear masks
- There are disinfectant and signage everywhere
- The inside toilets are reserved for athletes/trainers (RED). These are cleaned and disinfected regularly by a cleaning company
- There are 4 Dixi toilets outside: 2 are for SCC staff (1 RED and 1 BLUE) and 2 are reserved for recreational skiers
- Hand dryers are deactivated and replaced by paper towels in the bathrooms
- Masks must be worn at the entrance and exit, and when leaving the table
- Keep a minimum distance of 1,5 meter
- The tables are reserved and may only be used by the same team

- Food pick-up: the food at the buffet will be plated by staff - please observe all hygiene rules
- Frequent ventilation; when leaving the table, it is disinfected by the staff each time
- Continuous clearing of used glasses and dishes
- Continuous disinfection of the tables / chairs

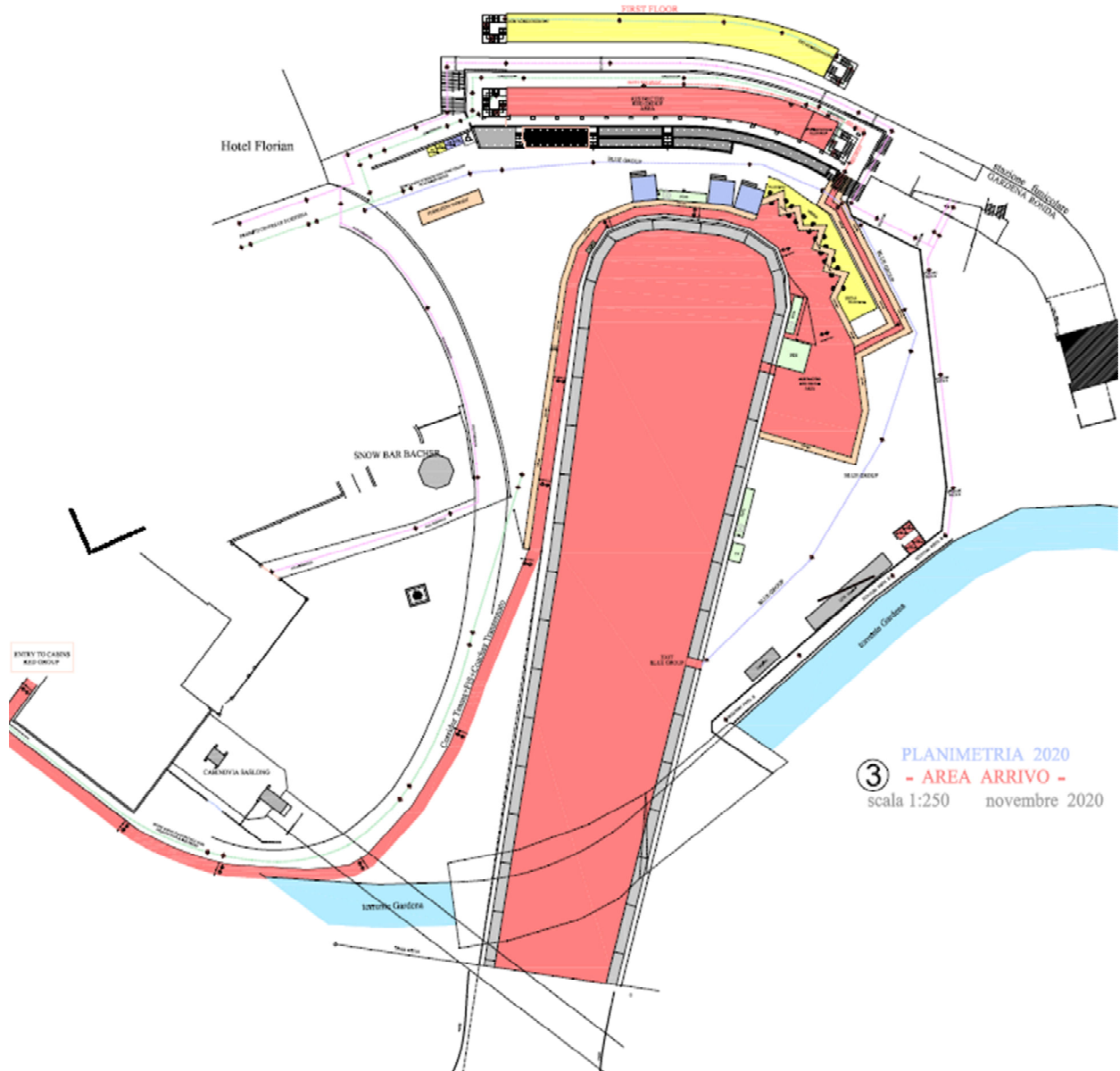
## APPENDIX 2.3



## BARRIERS AT THE FINISH AREA/MIXED ZONE

- Reserved hallway (entrance and exit) for athletes
- Reserved hallway (entrance and exit) for accredited persons
- Guaranteed minimum distance between athletes and media (2 meters width)
- Obligation to wear masks
- All accredited persons must have a valid test result when collecting their accreditation (YELLOW and RED groups)
- Persons with accreditation C (media, photographers, etc.), who are in their fenced-off areas, use the Dixi toilets at the finish line (YELLOW)
- Athletes use the RED toilets at the finish
- The Accredited Timing / Data 07 use the bathrooms in the Gold Lounge

## APPENDIX 2.4



### AWARD CEREMONY AT FINISH AREA

- The official award ceremony will be held immediately after the race (both on Friday and Saturday); only the podium will be awarded
- Athletes enter from the fenced areas
- Employees involved with the award ceremony have their own entrance
- The prizes are on the podium (trophy, cap, bottle)
- There will be 3 flag bearers with RED arm ribbons, who will reach the finish area via a second entrance



- The athletes will leave the award ceremony in the direction of the Gold Lounge where the press conference will be held via live stream
- Masks must be worn during the entire stay
- Avoid personal contact with the athletes
- Avoid shaking hands
- Keep the minimum distance
- Follow the signs and stay in your assigned zones
- Observe the general safety and hygiene measures

## **COURSE CREW**

- In the morning before the start of work, the course crew must undergo a the temperature check (if the body temperature exceeds 37.5° Celsius, the individual must undergo another test)
- The course crew is divided into group RED or group BLUE
- They wear a colored ribbon to distinguish them. They are divided into small groups and must not mix, i.e. they must avoid any contact with another group.
- Obligation to wear a mask and keep a distance
- Track B is open to recreational skiers (they circle the finish house and can reach the train and the Saslong cable car)

## **MEDIA**

### **ON-SITE**

- A mouth and nose protector must be worn in all accredited areas, whether in closed rooms or outdoors
- Keep a minimum distance of 1,5 meter
- Media representatives are required to restrict their movements as far as possible and not to leave the YELLOW zone
- Media has no access to the competition areas, the team areas and no direct contact to the athletes
- In the Mixed Zone, keep a minimum distance of 2 meters
- During the event, all interviews must be conducted in the Mixed Zone in the finish area
- During the training days, journalists have the opportunity to schedule interview appointments, which can be conducted in the In-Town-Mixed-Zone (in the Gold Lounge); here, too, all security measures must be strictly adhered to
- All microphones should be covered with a disposable plastic foil, which is replaced after each interview
- The microphone is reserved exclusively for the athlete. Journalists should not speak into the same microphone

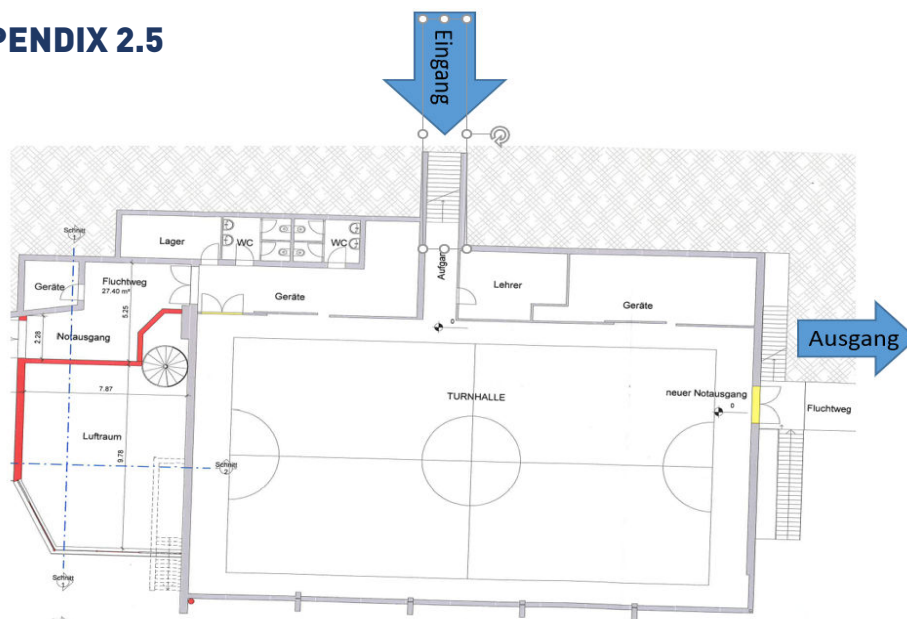
### **TRANSPORTATION**

- If possible, media representatives should use their own vehicles
- The Organizing Committee plans a shuttle service from the media center to the finish area - abiding by all safety and hygiene measures
- Observe the safety and hygiene measures on board the shuttle
- It is mandatory to wear a mouth and nose protector also inside the shuttle

## ACCREDITATION & PRESSE OFFICE

- All journalists must register on the FIS PASSPORT page and upload a valid PCR test or antigen test, not older than 72 hours before arrival, in advance to the FIS PASSPORT page
- All journalists must also register on the Eventbuilder platform under the following link <https://www.saslong.org/it/media/>
- Journalists must undergo one more antigen test upon arrival in Val Gardena/Gröden
- Accreditations are only granted if the antigen test is negative
- Accreditations are handed out in the accreditation center (next to the COVID-Center). The COVID-19 test center is located on the first floor of the Cultural center "Oswald von Wolkenstein" in Meisulesstr. 146, 39048 Selva Gardena (BZ)
- Check in at the hotel is possible only with the valid accreditation
- Temperature check at the entrance (you cannot enter the hall if your temperature registers above 37.5° Celsius)
- Each journalist is assigned a workstation that remains the same throughout the entire race week
- Maximum 100 workstations (compliance with the 1/5 rule)
- Disinfectants and signage are everywhere
- The toilets are regularly cleaned and disinfected; there will be different bathrooms for staff and journalists (for women and for men)
- There is a separate entry and exit
- Obligation to wear masks
- Keep a minimum distance of 1,5 m - tables are set up with the minimum distancing rules. The workplaces are disinfected daily
- Food pick-up: served buffet
- Eating times are extended: only journalists and the press room staff can have lunch in the press office
- Dining seats are marked according to distancing rules
- Continuous clearing of used glasses and dishes
- Continuous disinfection of the food area
- In the morning there is coffee and croissants, which can be consumed at the workplace or on the marked seats (not while standing!!)
- The press office is ventilated several times a day
- When leaving the table, it must be disinfected each time by the staff
- It is the responsibility of every person to adhere to this policy!!!

## APPENDIX 2.5





## **PRESS CONFERENCES**

- Athletes will not attend press conferences in the press office
- The press conferences after the races will be held with a moderator and a cameraman in the Gold Lounge
- The link to the livestream will be sent by the FIS to the press officer
- All participants wear face masks
- The journalists sit in the press office and have the possibility to enter questions to the athletes in a chat window during the live stream, which are then asked to the athletes by the moderator at the press conference

## **TV-CABINS**

- Host broadcaster, Timing & Data (group YELLOW and number 7 on the accreditation) must upload a PCR test or antigen test in advance on the FIS PASSPORT page and do the SCC antigen test on arrival
- There will be a separate entrance (door towards Florian) and a separate exit (door towards Gardena Ronda).
- Max. 2 persons per cabin
- Lunch packages will be available in the cabins
- Disinfectants are available in each cabin
- Signage everywhere
- Obligation to wear masks
- The cabins are cleaned and disinfected daily
- Separate WC for accreditation number 7 in the lower area Gold Lounge

## **PHOTO ZONES**

- A mouth and nose protection must be worn the whole time
- Observe the distancing rules
- Photographers are not allowed to enter the finish area to take pictures of the award ceremony. For this reason, the podium will be rotated so that pictures can be taken directly from the photographers' stand in the finish area.

GIB\_ENG\_04122020\_SCC