



General Info Booklet

Audi FIS Ski World Cup

Garmisch-Partenkirchen

Men's Super-G and Downhill

05.-06.02.2021

Stand: 12.01.2021

Table of Contents

General Rules	4
Covid-19 Safety Protocoll	4
Basics / General Rules of Conduct.....	4
Journey to Garmisch-Partenkirchen.....	5
Accreditation/Race Office (Kongresszentrum).....	5
Short summary regarding C-19 protocols	5
Accreditation Groups	6
Table 1.1	6
COVID-19 Communication.....	6
Leisure activities during your stay in Garmisch-Partenkirchen	7
Teams and Equipment Partners	8
Team Hotels.....	8
Race office	8
Drive from the accommodation to the event site.....	8
Event site	8
Cable Car Kreuzeck-Talstation	9
Appendix Finish Area.....	9
Start	10
Team Hospitality.....	10
Course Crew	10
Media.....	11
On-Site.....	11
Transportation.....	11
Accreditation & Press Office	11
Press Conferences	12
TV-Cabins.....	12
Photo Zones.....	12
Award Ceremony at the finish area.....	12

Medical care	13
Principle.....	13
Medical Organization Chart.....	13
Description of local hospitals in case of medical treatment	14
Klinikum Garmisch-Partenkirchen.....	14
BG Unfallklinik Murnau	15
Doctor's Meeting.....	16
First aid posts	17
Mountain rescue service (Bergwacht)	17
Emergency doctors.....	17
Communications.....	18
Helicopter	18
Description of first aid protocols.....	19
General principles.....	19
Team doctors.....	19
Outside Competition	20

General Rules

Covid-19 Safety Protocoll

Due to the COVID-19 pandemic, the **AUDI FIS Ski World Cup in Garmisch-Partenkirchen on 5th & 6th of February 2021** must be held under increased security measures. The event will therefore be held without an audience. Only accredited and registered persons who have to be on site for work purposes are admitted to the event.

Basics / General Rules of Conduct

- It is the responsibility of every person to adhere to this policy
- Respect hygiene measures
- Wash hands regularly and thoroughly
- Regular and correct use of provided disinfectant dispensers
- It is obligatory to wear a mask or a mouth and nose protector in ALL areas (in closed rooms, in shuttle buses, in the cable cars, on chair lifts, in all public places)
 - o Except
 - during mealtimes
 - during the practice of sport and
 - Athletes in the start and warm-up area
- Cover your mouth and nose with your bent elbow when sneezing or coughing
- A minimum distance of 1,5 m with mask applies everywhere
- Avoid shaking hands
- Avoid personal contacts or limit them to the absolute minimum. This also applies to the time outside the event area!
- Avoid contact with people who do not belong to your group (RED/ YELLOW/ BLUE) as much as possible
- Check your own health situation daily (if you feel ill and suffer from symptoms such as fever, cough, rhinitis, conjunctivitis or other flu symptoms, stay in your room and call the SOS COVID-19 number +49 171 9584368). In this case the Covid-19 workflow will be executed.

We appeal to EVERYONE to take their OWN RESPONSIBILITY and to comply and implement all measurements and recommendations made! Guidelines are used to implement or control compliance with the COVID-19 specifications. For your own safety and the safety of other people, you must follow the instructions of the operational staff. We reserve the right to exclude you from the event and to take legal action in the event of noncompliance with the COVID-19 regulations. The measurements defined were determined in accordance with the current regulations from 06.01.2021. The organizer reserves the right to make necessary changes, which will be announced immediately.

Journey to Garmisch-Partenkirchen

- In case of COVID-19 symptoms do not travel to the venue.
- Avoid stops between the departure point and the event location.
- Avoid contact with other people - especially outside the team.

Accreditation/Race Office (Kongresszentrum)

- Due to the current situation, we as organizers must limit the number of accredited persons; please only accredit people who are really working during the World Cup races.
- Each team member officially named by the respective National Ski Federation via the FIS online system must submit a **negative PCR test not older than 72 hours**.
- The test protocol must be uploaded at least 8 hours before arrival on the FIS-COVID 19 passport.
- Furthermore, it is mandatory to fill out the Whereabouts and the pre-Health Questionnaire which is in the FIS Covid-19 Passport. The COVID-19 test protocol of each individual team member must be submitted via the FIS COVID-19 Passport no later than 6 hours before the accreditation is picked up.
- Only after these documents have been recorded in the FIS Covid-19 passport the accreditations will be handed over to the team captain or one nominated person and the reserved rooms in the hotel may be occupied.
- Only the team captain or one representative of the team may receive the accreditations collectively.
- All persons, who apply for an accreditation for both weekends (30.-31.1 and 05.-06.2.2021) in Garmisch-Partenkirchen must do another Antigen-Test the sixth day after their first PCR-swab to repeat.

Short summary regarding C-19 protocols

Our C19-protocol should be based on a clear understanding of the following test requirements:

One PCR test not older than 72 hours for registration at FIS Passport is eligible.

- **Giving a concrete date for the first possible chance for taking the sample to apply for the FIS Passport and the accreditation:**
 - Men:
 - Accreditation in Garmisch: Tuesday 2nd of February 2021
 - First DH-Training: Wednesday 3rd of February 2021
 - This means that first possible chance for taking the sample is *Sunday, 31st of January 8 am.*

Accreditation Groups

The security plan provides that only the following persons should be granted access to the event. All attending persons are divided into groups (COLORS) and will be registered.

Table 1.1

Accreditation Group	Number	Tests Required	Accreditation/Registration
GROUP RED Athletes, coaches, support, service, SRS, FIS, Timing & Data	Approx. 400	PCR test in advance on FIS PASSPORT	Kongresszentrum Garmisch-Partenkirchen
GROUP BLUE (1/2) OK employees: - closest management, start/finish/team hospitality/racing office, shuttle driver - volunteers: Production along the racing track	Approx. 300	OK employees (closest management) Antigen-Schnelltest	DSLV-Haus Garmisch-Partenkirchen Registration in volunteer's tent (next to the finish area)
GROUP BLUE (2/2) External Companies	Approx. 50	PCR Test in advance on FIS PASSPORT	Kongresszentrum Garmisch-Partenkirchen
GROUP YELLOW Media (Host Broadcaster, other TV stations, print and online journalists, photographers, radio, staff press office)	Approx. 150	PCR Test in advance on FIS PASSPORT	Kongresszentrum Garmisch-Partenkirchen
Total	Approx. 900 people		

According to the table above, the RED, the YELLOW and the parts of the BLUE Group (External Companies) must upload a PCR test not older than 72 hours to the FIS PASSPORT page before arrival.

ATTENTION: Persons with a positive PCR test within 2 weeks prior to arrival cannot participate in the event. This test can in case be performed at own expense at Alpspitz-Wellenbad (Klammstrasse 47 – 82467 Garmisch-Partenkirchen). Attention: the evaluation time of the tests are from 12h – 76 h.

COVID-19 Communication

- In case of symptoms during 3rd and 6th of February 2021 immediately inform the LOC at the Single Point of Contact number: +49 171 9584368
- LOC activates the COVID-19 rescue chain.
- All communication regarding COVID-19 must be coordinated with the FIS, the LOC and the local health authority Garmisch-Partenkirchen.

Leisure activities during your stay in Garmisch-Partenkirchen

- In all recreational activities, remember to comply with the COVID-19 measurements such as social distancing, wearing NMS, hygiene and contact avoidance.
- Restrict your leisure activities to do necessary shopping and urgent tasks that cannot be postponed.
- Spend your free time only with members of your team/small group.
- To keep the risk of infection as low as possible, the Organizing Committee recommends
 - o Staying only in small groups
 - o Avoiding contact with the teams
 - o Restricting contact with other people
 - o Avoiding contact with tourists/fans
 - o Keeping your distance, washing your hands frequently or disinfecting them often

Teams and Equipment Partners

Team Hotels

- The LOC has reserved team accommodations.
- Each team member is obliged to stay in the accommodation allocated by the LOC for the duration of the event.
- Wear a mouth and nose protector in all public areas.
- In the buffet area a mouth and nose protector is compulsory, this can be taken off at the table.
- Further hygiene measures according to the hotels policy.
- Check-in of all team members by the team captain.
- Maintain social distancing in all areas.
- Avoid using the elevators.

Race office

- The Team Captains' Meeting will be held at Olympiasaal, which is next to the Kongresszentrum.
 - o Team Captains' Meeting:
 - With limited number of participants (1 representative per team + doctors + FIS + SCC closest management) - maximum 50 persons
 - Minimum distance between the chairs
 - Wearing masks is obligatory
- The race office and accreditations for the RED, BLUE and YELLOW groups will be handed out at the Kongresszentrum.

Drive from the accommodation to the event site

- Preferred transport in the own teams' vehicles.
- Avoid stops between the hotel and the venue.
- Only use the allocated and designated parking space for your team (red parking space).

Event site

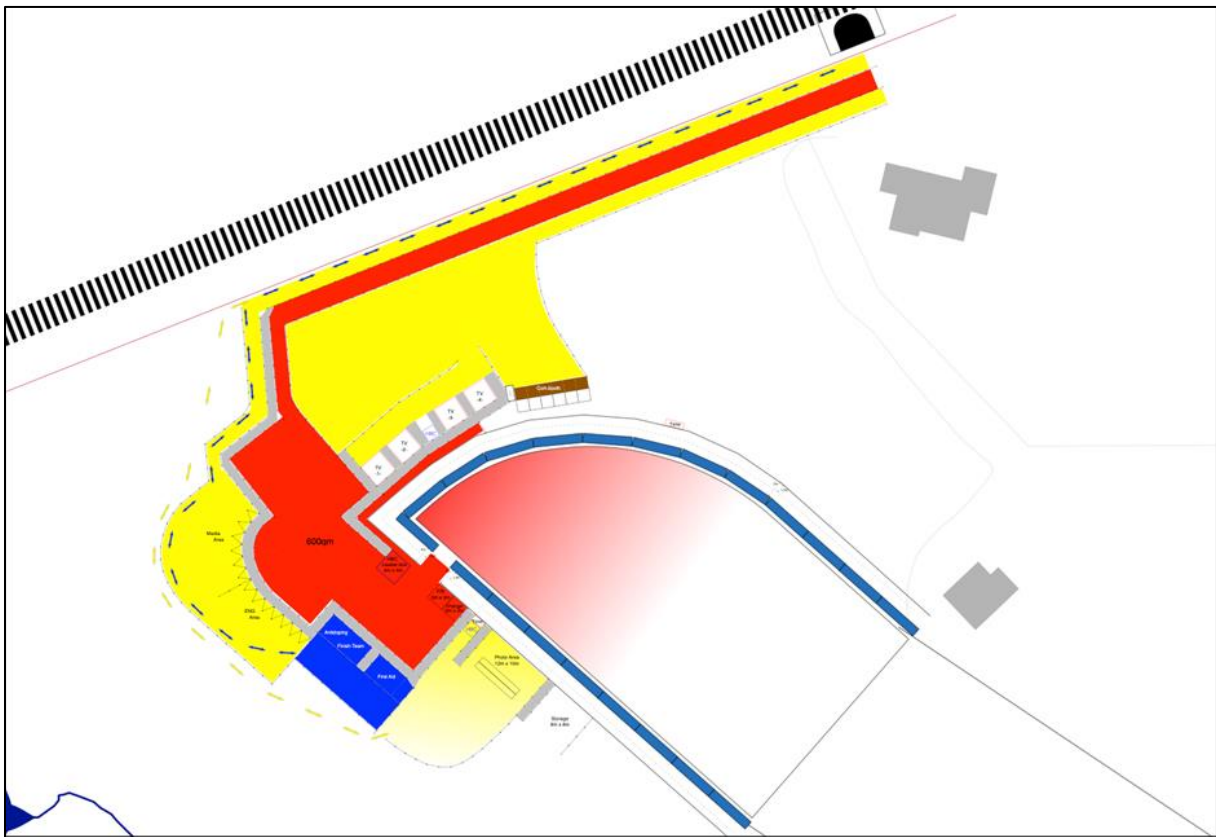
- Maintain social distancing
- Remain in the assigned and marked team zones (red zone).
- The team zone (red zone) is cordoned off and only accessible to designated accredited people.
- Avoid direct contact with other teams.
- Avoid direct contact with employees/press.
- Mouth and nose protection must be worn on the event site. Exceptions:
 - o During the practice of sport.
 - o Meal times

- If any member of the team feels unwell or has COVID-19 symptoms, contact the LOC immediately at the Single Point of Contact +49 171 9584368. The number is available 24 hours a day from Wednesday 3rd – Saturday 6th of February 2021
- There is an isolation room near the event area in case of symptoms at the DSLV-Haus (An der Kandahar 11, 82491 Grainau).

Cable Car Kreuzeck-Talstation

- Separate entrance and exit for athletes / coaches (group RED)
- Mandatory masks in the cabin
- Reserved cabins for athletes and teams
- One-way routes for athletes from the finish area to the cable car
- RED, BLUE and YELLOW Group must not use the same cabins and should never mix
- ATTENTION: Every athlete must go the finish area after inspection and race. Exit out of the Mixed Zone will be through the designated RED way.

Appendix Finish Area



Start

- Mind: New start area for DH is located at Tröglhang – which means that you only need the Cable Car Kreuckbahn to get from finish to start
- The start area is reserved for athletes, team members and start personnel; it is fenced in and cannot be entered by staff and guests.
- Start tent: max. 1 athlete + 2 team members with masks
- 1 Start Judge, 1 Swiss Timing Starter, 1 Hand Timing, 1 Access Controller (all with mandatory masks)
- In the warm-up tent (not closed) a distance of 1,5 meter must be kept.
- The starting numbers will be handed out by only 1 person and only in the open
- Observe mask obligation and distancing

Team Hospitality

- Athlete's tent is located next to the start area of the DH races at top of Tröglhang
- Obligation to wear a mask in the team hospitality area (athlete's tent)
- Prepared food and drinks are available in the team hospitality area
- Our employees are tested and wear masks
- There are disinfectant and signage everywhere
- Inside toilets at the original DH-start (SCG Starthaus) – at the top of Kandahar-Express Chairlift ONLY for athletes and will be disinfected regularly
- There are Dixi toilets outside (next to the athlete's tent)
- Masks must be worn at the entrance and exit, and when leaving the table
- Keep a minimum distance of 1,5 meter
- The tables are reserved and may only be used by the same team
- In the team hospitality area, sit together exclusively with your team colleagues (no contact with other teams).
- Continuous clearing of used glasses and dishes
- Continuous disinfection of the tables / chairs
- If any member of the team feels unwell or has COVID-19 symptoms, contact the LOC immediately at the Single Point of Contact +49 171 9584368. The number is available 24 hours a day from Wednesday 3rd – Saturday 6th of February 2021.

Course Crew

- In the morning before the start of work, the course crew will register at the volunteer's tent which is next to the DSLV-Haus
- They are divided into small groups of up to max. 10 persons and must not mix, i.e., they must avoid any contact with another group.
- Obligation to wear a mask and keep a distance

Media

On-Site

- A mouth and nose protector must be worn in all accredited areas, whether in closed rooms or outdoors
- Keep a minimum distance of 1,5 meter
- Media representatives are required to restrict their movements as far as possible and not to leave the YELLOW zone
- Media has no access to the competition areas, the team areas and no direct contact to the athletes
- In the Mixed Zone, keep a minimum distance of 1,5 meters
- During the event, all interviews must be conducted in the Mixed Zone in the finish area
- All microphones should be covered with a disposable plastic foil, which is replaced after each interview
- The microphone is reserved exclusively for the athlete. Journalists should not speak into the same microphone

Transportation

- If possible, media representatives should use their own vehicles
- There are enough parking spaces next to the event area

Accreditation & Press Office

- All journalists must register on the FIS PASSPORT page and upload a valid PCR test, not older than 72 hours before arrival, in advance to the FIS PASSPORT page. Furthermore they have to answer the (Daily Health Questionnaire) at the FIS Passport. Only if both columns are filled in and the test is negative, the accreditations are handed out at the Kongresszentrum.
 - o Homepage: <https://fispasport.fis-ski.com/fis>
 - o Access Code: FIS2021
- All journalists, who apply for an accreditation for both weekends in Garmisch-Partenkirchen must do another Antigen-Test the sixth day after their first PCR-swab to repeat
- Each journalist is assigned a workstation that remains the same throughout the entire race week
- Maximum 100 workstations
- Disinfectants and signage are everywhere
- The toilets are regularly cleaned and disinfected
- Obligation to wear masks
- Keep a minimum distance of 1,5 m - tables are set up with the minimum distancing rules. The workplaces are disinfected daily
- Food pick-up: served buffet
- Continuous clearing of used glasses and dishes
- Continuous disinfection of the food area
- It is the responsibility of every person to adhere to this policy!!!

Press Conferences

- Athletes will not attend press conferences in the press office
- The press conferences after the races will be held with a moderator and a cameraman in the DSLV-Haus
- The link to the livestream will be published by the LOC
- All participants wear face masks

TV-Cabins

- Each member of this group must submit a negative PCR test not older than 72 hours via the FIS online PASSPORT system.
- There will be a separate entrance into the event site
- Max. 2 persons per cabin
- Signage everywhere
- Obligation to wear masks
- Separate WC

Photo Zones

- A mouth and nose protection must be worn the whole time
- Observe the distancing rules
- Photographers are not allowed to enter the finish area to take pictures of the award ceremony. For this reason, the podium will be rotated so that pictures can be taken directly from the photographers' stand in the finish area.

Award Ceremony at the finish area

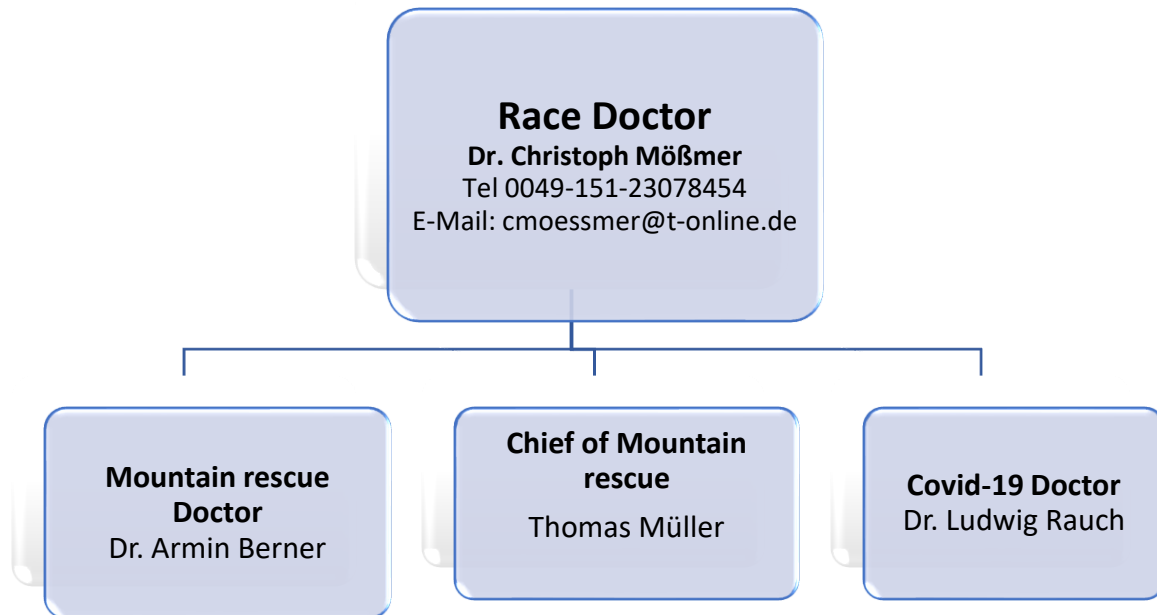
- The official award ceremony will be held immediately after the race (raceweekends); only the podium will be awarded
- Athletes enter from the fenced areas
- The prizes are on the podium (trophy)
- The athletes will leave the award ceremony following the RED way out of the Mixed Zone to the TV-Compound. Next to the TV Compound at the DSLV-Haus the press conference will be held via live stream.
- Masks must be worn during the entire stay
- Avoid personal contact with the athletes
- Avoid shaking hands
- Keep the minimum distance
- Follow the signs and stay in your assigned zones
- Observe the general safety and hygiene measures

Medical care

Principle

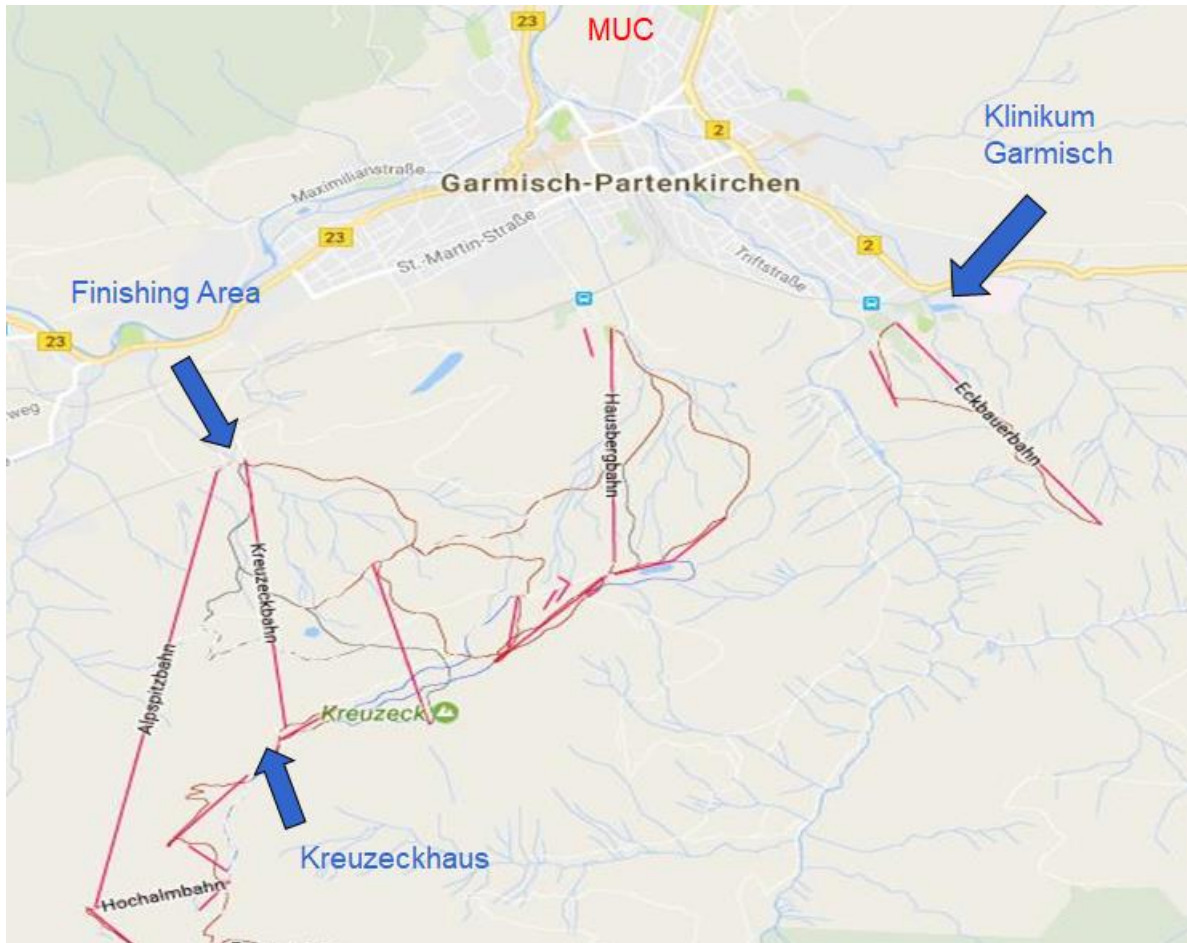
It is an honour and the responsibility for the medical department of the LOC to make sure that any participant of the Kandahar Races should have any medical support needed. Primarily this stands for the athletes on and off piste. As well, everyone else involved during the races should have a high-level medical support during the stay in Garmisch-Partenkirchen.

Medical Organization Chart



Description of local hospitals in case of medical treatment

Klinikum Garmisch-Partenkirchen

Further details:

- Auenstraße 6, 82467 Garmisch-Partenkirchen
- Tel. 0049-8821-770
- Flight Time 2 min from racetrack
- Driving Time by car 10 min from racetrack
- 500 beds with 20 intensive care beds
- Level 2 Traumacenter- MRI 12/7 - general surgery- vascular surgery- thorax surgery- endoscopy 24/7- heart catheter 24/7- CT24/7-, blood bank.

BG Unfallklinik Murnau

Further details:

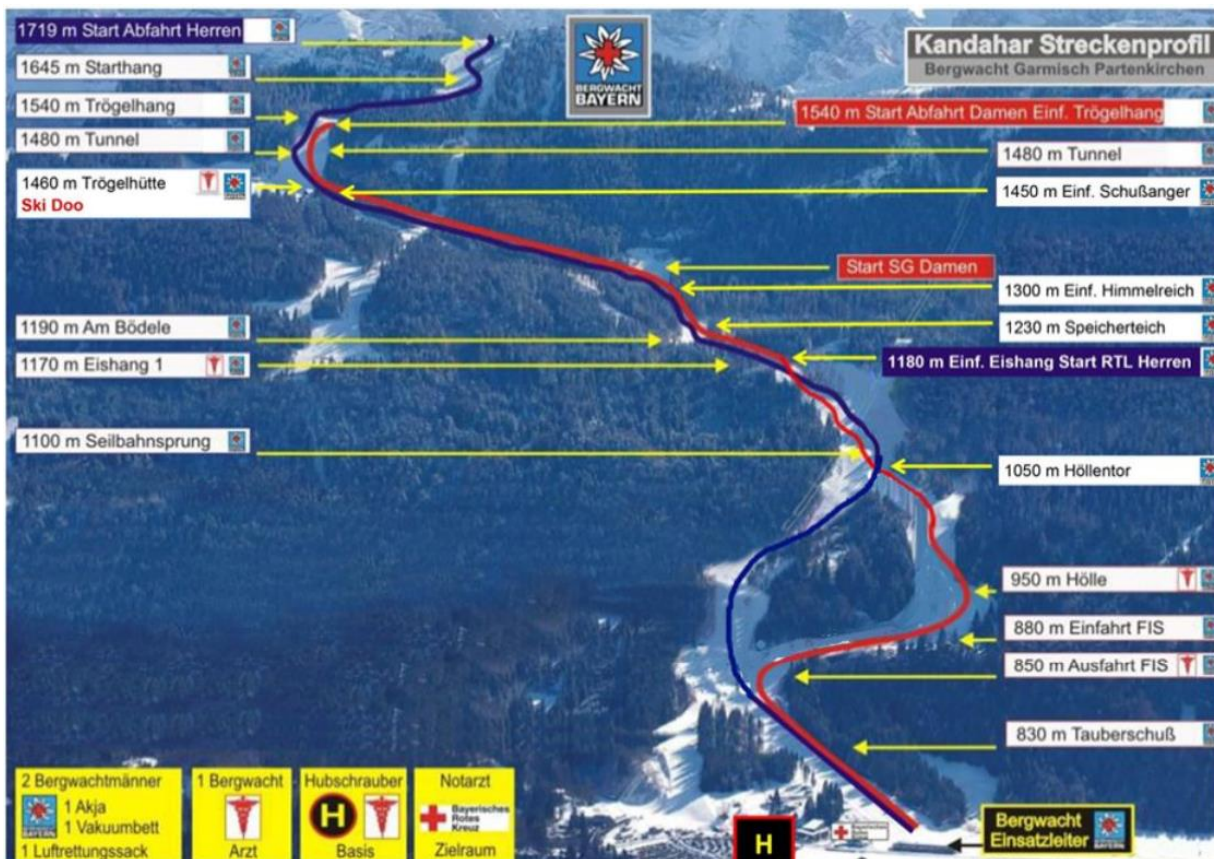
- Professor-Küntschers-Straße 8, 82418 Murnau am Staffelsee
- Tel 0049-8841-480
- Flight time 10 min from racetrack
- Driving Time by car 30 min from racetrack
- 1000 beds with 40 intensive care beds
- Level1 Traumacenter-CT24/7– neurosurgery – burning unit - endoscopy 24/7 -heart catheter 24/7, blood bank.

Doctor's Meeting

According to the daily program there is going to be a doctor's meeting at the Kreuzeckhaus.



First aid posts



Mountain rescue service (Bergwacht)

We are providing up to 30 persons of the mountain rescue staff. This workforce are the first attendees during the races. They are all qualified, experienced professionals who have undergone annual refresher courses. During the races, the staff have the following equipment at their disposal:

- Resuscitation equipment: oxygen, semi-automatic defibrillator (SAD)
- Immobilization equipment: limb splints, cervical collars, vacuum mattresses
- Transport equipment: sledges, vacuum-mattresses, and skidoos
- Communications equipment: radio telecommunication system, mobile phones
- The Chief of Mountain rescue is located in the finish area and has access to the uncut TV Source and is directly linked with the Jury and the race doctor

Emergency doctors

We are providing up to 6 emergency doctors. They are all qualified and experienced mountain emergency doctors. A lead doctor has been designated to ensure medical coordination:

Dr. Armin Berner

The number and distribution of doctors on the track and around the site are detailed on the map above. The emergency doctors will be present during the competitions and official training sessions.

Communications

The entire medical team is equipped with a radio telecommunication system with a dedicated frequency. Other communications will be made by mobile phones elsewhere on the site.

The race doctor, Dr. Christoph Mößmer, is in communication with the emergency doctors, the rescue staff, the jury and the hospitals.

Helicopter



A complete equipped twin-turbine H-145 Rescue helicopter, fitted with a winch, is dedicated to rescue the competitors. During the race the helicopter will be stationed next to the finish area. This helicopter is exclusively for the Kandahar Races.

It is equipped with an emergency doctor. In case we have an evacuation from the slope, the doctor will stay with the racer in the helicopter. So we ensure, that we don't have a loss of doctors manpower on the track.

The „ARA Flugrettung“ helicopter also has a NVIS (night vision) system. Just in case an injured ski-racer would like to get a secondary helicopter transportation, after the first medical survey in our hospitals, it may be possible with inquiry.

Description of first aid protocols

General principles

In the context of injuries occurring during warm up, official training sessions and competitions:

- The chief of race ensures that the track is clear and gives the go-ahead for the rescue staff to intervene

---- Start Stop ----

- The rescue staff is the first to intervene, making an initial assessment and transmitting it to the chief of mountain rescue, who is in contact with the Race doctor and the jury. The rescue staff will carry out first aid. The chief of mountain rescue decides whether a doctor should intervene on the track or not.
- If necessary, the emergency doctor oversees the therapeutic management and transmits a second report. The emergency doctor will escort the patient until secondary transfer.
- The Race doctor, Dr. Christoph Mößmer, in collaboration with the chief of mountain rescue chooses the most appropriate way of evacuation and destination for the patient.
- Most likely this is going to be the Klinikum Garmisch-Partenkirchen (flight time: 2 minutes)
- In case there is a helicopter evacuation, a medical spare equipment is provided at the Heli Pad of the Klinikum Garmisch-Partenkirchen
- On this way we ensure the helicopter is immediately ready to be used again and can return to the racetrack in a proper time shortly after offloading the patient at the Heli Pad.
- During race days there is one experienced trauma surgeon at the Klinikum Garmisch Partenkirchen exclusively for the athletes and staff of the Kandahar races.
- The Race doctor, Dr. Christoph Mößmer, communicates a health bulletin to given heads of the teams as soon as possible.

Team doctors

- They may approach to their injured racers after the track has been closed and the attending rescue staff has given permission.
- They may intervene but only if asked by and under the responsibility of the organizing medical staff present.
- They may not accompany his evacuated patient, unless the emergency doctor and the helicopter crew consider it as a special circumstance.
- After the race, training or warm-up, if any injury occurs by one of their athletes, they have to inform Dr. Christoph Mößmer, to complete the injury form for FIS ISS.

Outside Competition

For **any** medical problem or question occurring outside the competition, warm-up or training track competitors and their teams, do not hesitate to contact the race doctor Dr. Christoph Mößner, unless it is an emergency situation.

For any emergency situation outside the competition, warm up or training please contact 112 immediately to get connected to the local Medical Rescue System (Rotes Kreuz).