

LEVI ALPINE WORLD CUP 2020 COVID-19 RISK MANAGEMENT PLAN

PURPOSE

To deliver a safe event during the Levi Audi FIS Ski World Cup amidst the COVID-19 pandemic and maximize the potential for teams, media, volunteers, contractors and stakeholders to accomplish their goals in a risk-reduced environment. This document is aimed to provide information and a guideline to all participating groups, national and local health authorities, FIS medical committee and Levi businesses in order to secure a smooth runthrough of the event amid COVID-19 pandemic. Each section includes specific measures, rules and suggestions given the exceptional circumstances. Information in this document is being updated regularly as the epidemic situation in Finland and surrounding areas evolve.

TABLE OF CONTENTS

General Considerations

- Finland and Levi as a destination
- FIS Alpine World Cup
- Medical review
- International travel
- Preparations - Creating a snowflake (bubble)

Participating Groups

- Athletes, Teams and SRS
- Media
- International Ski Federation (FIS)
- Partners and vendors
- Local Organising Committee (LOC)
- Volunteers
- Contractors
- Public

Facilities

- Kittilä Airport
- Office facilities
- Hotels and Ski Lodges
- Service
- Levi Ski Resort
- Field of Play
- Team Hospitality / Doping
- Public areas
- Hospitality
- Onsite COVID-19 testing facilities

COVID - 19 Response

- Prior the event
- Covid-19 Task Force
- Line of Command & Communication
- Lapland Hospital District - testing and isolation
- Key personnel

Program

Maps

- Kittilä Airport - TO BE ADDED
- Race Office - TO BE ADDED
- Field of play
- Hotels - TO BE ADDED

Annex

- FIS - testing protocol
- FIS - event organiser guideline

GENERAL CONSIDERATIONS

Finland and Levi as a destination for sport

Finland enjoys a status of an established race organiser for various snow sports and is relied upon to organise annual FIS World Cup races in five categories - alpine, freestyle, cross country, ski jumping and nordic combined. These competitions together have a significant contribution to national health and wellbeing and in building an image of Finland as a winter wonderland and a major winter sport tourism destination. Furthermore local organising committees including the national ski associations (NSAs) rely heavily on the possibility to organise events in their attempts to promote sport and health in society, to increase exercise among the youths, to promote ski resorts and venues and to provide an opportunity for the Finnish elite athletes to practice sport as a profession. Based on these arguments entry to all international ski events for international athletes, support teams and other related groups is essential.

As of September 13th Finland is one of the least affected countries after the start of the pandemic. Since July the country has seen an increase in new infections but the prevalence of new infections is still 10 cases per 100,000 inhabitants on a 14 day running average (10.1, on Sept. 14th). In total the country has 8,799 reported cases and 339 Covid -19 associated deaths (Sept 17th, ECDC). Levi is located in the northernmost part of Finland and falls into the jurisdiction of Lapland Hospital District. The area is one of the least impacted in Finland since this summer with a very few cases in August and September. Levi has run a successful summer season with the majority of hotels and restaurants operating along with Ski Resort's summer activities. Travelling to the area has been mostly supported by domestic tourism with very limited international travellers in the country and area. Christmas is a major travel season for Levi however chartered flights from around Europe only start after the World Cup event.

National authorities' hybrid strategy to fight Covid-19 is focused on testing, tracking and isolation of potential cases. The main governing bodies include the Ministry of Social Affairs and Health (STM) supported by the Finnish Institute for Health and Welfare (THL). The government is enforcing legislation and restrictions on a needs basis and for example mandating travel and entry related matters to Finnish Border Guard for implementation.

<https://stm.fi/en/-/10616/government-discusses-action-plan-to-manage-covid-19>

Sport and International Sport Events governance is with the Ministry of Education and Culture (OKM). Sport events currently follow some specific rules and standards including;

- Public events for more than 500 participants are allowed if special arrangements have been made to secure hygiene and social distancing.
- International teams enjoyed no exemption from travel restrictions over the course of summer. However, international athletes and teams have been visiting Finland with invitations to events provided by the organisers.

In the absence of a strategy and guideline to International events, together the aforementioned organisations assess each event on a case by case basis from a health and security perspective. In order to meet all standards and to apply necessary precautions, the Levi World Cup Organising

Committee (LOC) is taking the initiative to document and combine national regulations and the guidelines set by International Ski Federation (FIS) in this document to prepare for any and all expectations of authorities.

FIS Alpine World Cup

FIS Alpine World Cup is an International sports league with a global footprint. It is the highest level of the sport and along with the Olympic Games and World Ski Championships the primary objective of international elite athletes. Racing takes place primarily in Europe but annual visits to North-America and Asia are scheduled in normal conditions. Viewership of televised events is high and global. Levi World Cup was broadcasted live around the globe in 2019 with a total audience of 258 million in 2019.

FIS' goal for season 2020-2021 is to stage FIS World Cup competitions throughout the winter season with the following goals;

- Ensure Safety, welfare and discipline of all participants and events by obligating all participating populations to Snowflake (bubble) procedures
- Arrive Safely with the Teams and Stakeholders at the FIS World Championship, season highlight events
- Create FIS and joint actions to provide confidence to all Stakeholders: National Health Authorities, National Ski Associations, Teams, Organisers, Stakeholders

The FIS World Cup Testing Protocol (Annex) defines the procedures, requirements, roles and responsibilities for the persons who are an integral part of carrying out FIS World Cup events. Everyone participating (accredited groups) are expected to take action to the best extent possible to minimise any risk of Covid-19 transmission.

There are four population groups who are subject to compulsory adherence to this protocol who are closely interacting in the staging of FIS World Cup Events:

1. Athletes, Team Support Staff, Equipment Service
2. FIS Officials
3. Accredited Groups: Broadcasters, Rights Holders, Sponsors and Partners, Event Management, Timing & Data Service, Suppliers, Event Service Teams, etc.
4. Local Organising Committee: Officials, Personnel, Workforce, Volunteers

Cohorts of different population groups are marked with colors according to tasks executed in the event and necessity to interact during the race.

RED: Athletes, Team Support Staff, Equipment Service, FIS Officials, Timing and members of organizing committee relevant to race production such as start personnel, judges, jury, Race Director, Medical Doctors and Finish area personnel

BLUE: course crew, lift service crew and equivalent

YELLOW: Media and Broadcasters

GREEN: Public, Vendors,

Medical review

National Health Regulations are decisive in each World Cup hosting country. Therefore LOC is taking the action to mediate between all parties and authorities. Finnish government along with key coordinating ministries and authorities are publishing rules and regulations that event organisers are committing to follow.

<https://valtioneuvosto.fi/en/information-on-coronavirus>

<https://thl.fi/en/web/infectious-diseases-and-vaccinations/what-s-new/coronavirus-covid-19-latest-updates>

FIS testing protocol and event organiser guideline (annex) published on Sept 9th are the primary guidelines from the event organisers side and subject to national authorities approval. Due to the nature of each organizing venue some event specific rules and guidelines will be implemented. These are documented in sections that follow.

While all precautions will be taken at this event to reduce the risk of COVID-19, just due to the nature of the event, number of people involved and travel, the risk cannot be fully eliminated. As such there needs to be a robust plan to reduce the risk of introducing COVID-19 or spreading COVID-19 during the event. The added challenge is the knowledge that people can be asymptomatic carriers and spreaders of COVID-19, and that COVID-19 testing can be falsely negative. This document includes preparations throughout and section Covid-19 response is designated to addressing measures to be taken prior, during and after the event.

International travel

There are currently (Sept 17th) international travel restrictions to / from Finland for specific geographical locations including the majority of European countries. For domestic travel there are no restrictions in force. The Finnish government along with Finnish Institute for health and welfare (THL) are assessing travel associated risks and publishing travel restrictions every two weeks. In a resolution from Sept 11th the government aligned that starting September 19th travelling without restrictions is possible to and from EU and Shengen countries with a Covid-19 prevalence lower than 25 cases per 100,000 inhabitants over 14 days running average. Travelling from countries above the threshold is subject to special group status or later in the year testing protocol. Traveling to / from outside of Shengen and the EU would remain restricted. After a transition period (Sept 19th - Nov 22nd) a new model for testing and entry is planned to be implemented.

<https://valtioneuvosto.fi/en/-/10616/government-adopts-resolution-on-implementing-the-hybrid-strategy-for-border-traffic-and-travel>

In the same government decision in principle from September 11th, sport was awarded a “special group” status whereby teams and sport related groups are subject to an adapted procedure whilst travelling. The status is in force from Sept 19th. This status is based on invitation by organiser or employer only and is subject to the organiser being able to secure necessary precautions and a health and safety plan in order to prevent COVID-19 transmission during visitors’ stay. Visits under this rule are assessed for their significance and security by authorities. As of September 13th it is

unclear what exact measures are required from the organiser and travellers. Therefore the LOC is preparing two potential plans for travelling, both applicable to all participating groups in section 2;

Scenario 1

Travel is fully organised and controlled by the LOC who will arrange international travel as a cohort from a port of departure (a major European hub) via chartered airplane on 18.11.2020 directly to Kittilä where all participating groups are being put into a snowflake (bubble). An earlier additional cohort can be considered a week before (Nov 9th-11th) if teams desire, event logistics require it, if it can be supported financially and if national authorities approve it. LOC will also secure all necessary documentation for participating groups to be allowed to enter and leave Finland without border control issues. All groups are subject to pre -testing (Covid -19 test no older than 3 days) prior to departure and a re-test upon entry should national authorities require it. In Levi all groups are expected to follow a quarantine like conditions built by the LOC and specified in the following sections. Departure from Levi is using a similar arrangement on 22. or 23.11.2020.

Scenario 2

Entry to the country is organised by each participating group by means of using ground transport and / or commercial flight connections to Levi / Kittilä between 9.-11. / 17.11. - 19.11.2020 (official invitation periods - to be confirmed). Each team and participant group will arrange their own travel following national health regulations and guidelines. Pre -test is still required to enter the country. Upon arrival at Levi, participants are tested and being put into the snowflake for the duration of their stay event.

In case groups wish to travel outside of official invitation periods and the above described scenarios they need to;

- Secure their own entry to country based on then current travel regulations
- Follow and obey all instructions by government officials and national / local health authorities
- Arrive at Levi snowflake no later than 19.11. with a negative Covid-19 test no older than 72h, with their health questionnaire and whereabouts available from past 14 days in Covid-19 passport.

Preparations - Creating a snowflake (bubble)

The goal of this document is to organise the event in a safe way and create cohorts in order to isolate all participating groups (section 2) from locals, tourists and each other for the whole duration of the event. The primary concern for the LOC is to

1. Protect all participating groups from infection
2. Protect tourists, locals and workers in the area
3. To be able to isolate groups effectively and efficiently
4. To keep a positive infection in isolation and the resulting quarantine limited to less than 10 person
5. To keep the tour from stopping in case of a positive case and give the next organiser of FIS Alpine World Cup an opportunity organise their event safely
6. To organise a world class sport event and TV-entertainment

The aim of these measures is to secure the event regardless of epidemiological developments in Finland and around the globe. The specific action taken by the the LOC include;

- Testing of all participating groups prior to travelling or in accordance with national health regulations. Negative test to be taken maximum 72 hours prior travelling.
- Cohort travelling, transportation and accommodation
- Covid -19 testing upon arrival to all international groups if required by the health authorities
- Health questionnaires pre-event to all participating groups
- Cancellation of public events excluding the Race
- Limited accreditation - no international public and / or guest of teams, minimum accredited workforce, no accreditation to teams exceeding quota
- Participant groups are obligated to follow FIS protocol and risk losing their accreditation unless
- Whereabout tracking for FIS World Cup Tour in Covid-19 passport
- Physical distancing of two metres throughout the resort between all event guests and employees and/or cohorts
- Mandatory masks for all event guests including teams, media, volunteers, contractors and stakeholders in public and private function spaces, also outdoors if distance can not be maintained
- Masks worn by all resort employees indoors
- Hand hygiene, including proper handwashing and hand disinfection for all + sanitizer stations throughout the resort and in each private function space
- Screening for all event guests as necessary (may include a temperature check)
- Screening for all employees,(may include a temperature check)
- Increased cleaning and disinfecting frequency, with continued use of EPA-registered disinfectant proven effective in preventing the transmission of COVID-19, with special attention to high- touch points
- COVID-19 awareness, education and training for everyone participating
- Low or no-touch payment where possible
- Minimize guest touchpoints through the repositioning and/or removal of excess furniture
- Plexi-glass separation in key areas

More group and facility specific information in the sections that follow.

PARTICIPATING GROUPS

Athletes, Teams and SRS

Approximately 200 - 230 ladies slalom team members from appx. 20 nations travel from Central Europe from previous World Cup races held in Austria or from training locations in Europe.

In scenario 1 all teams travel with a charter flight coordinated by the LOC of Levi on Nov 18th. Port of departure TBC. Material logistics are being coordinated and / or organised centrally by the LOC. The teams are traveling as a “cohort” from the previous race and / or port of departure, where they have been tested or a test is required after the previous event. An earlier additional cohort can be considered a week before (Nov 9th-11th) if teams desire, event logistics require it, if it can be supported financially and if national authorities approve it. Entry to Finland and accreditation by any other travel means is not possible. Return to point of origin is organised in similar fashion.

The teams are tested in the previous race or prior to joining the flight. All participants are required to prove a negative COVID-19 test result no older than 72 hours in order to enter Levi charter. Upon arrival at Kittilä airport the local health authority may require an additional test. From the airport teams transfer to the ski resort and accommodation with teams’ rental cars and do not use any public

transportation. Car rentals are being centrally coordinated by LOC. Depending on national health authority requirements athletes and teams are re-tested during the event.

In scenario 2 teams travel using commercial flights and / or organise their own ground transport to Finland / Levi following then prevailing national regulations. Official invitation period applies as presented in section "International Travel". Upon arrival to Levi each team will travel directly to their respective accommodation for accreditation and check-in and follow isolation rules thereon. Testing and a negative test result no older than 72 hours is required.

Teams stay in 2 hotels: Break Sokos Hotel Levi and Hotel Panorama. Each hotel has their own security plan described in section facilities. Teams will be using single / double rooms. Each hotel has the opportunity for quarantine in isolation if needed. The teams will be obligated to follow FIS protocol (annex) and will not move in public. All teams are expected to strictly limit their freetime to socialising with their own team.

The FIS will record athletes' and teams' whereabouts during the season and each team member will have their testing history available to the event organiser in a Covid -19 passport, a digital database hosted by the FIS. Once the team members arrive at Kittilä airport, all members are requested to download the tracking app Vilkku to safeguard participants during the event and to allow the event COVID-19 task force to act should there be a positive case during the event.

Teams will be accredited to enter "Red" - zone in Field of Play, training facilities and their respective accommodations. Key officials will be accredited to move in other facilities assigned with letters (A-Z)

OBJECTIVE! Under any circumstance should there be no situation where a positive case results in a quarantine of more than 10 people.

Media

Media representatives in the World Cup Levi event consist of host broadcaster, Finnish national TV with a studio, Infront representatives, FIS media coordinators, live tv crews from several different European countries, photographers, journalists and social media representatives. Also LOC's own media representatives for video, photo, written, social media and communications are part of this group. Based on the knowledge from previous years, the number of domestic persons is around 100 and international 200 of which only a small fraction outside of Europe.

Media center will be located in hotel Hullu Poro, which will also serve as accommodation for those traveling to Kittilä. The hotel services are designated for media usage only in order to keep the group as an isolated cohort where possible.

Each media representative must provide LOC the following information 3 days prior to departure in the FIS Covid-19 database. LOC holds the right to deny access to the event based on the restrictions set by Finnish health authorities, unless all the criteria is fulfilled acceptably.

FIS representatives and Infront will travel with athletes and teams in Scenario 1 and accredited to **red zone**. Finnish groups will travel using ground transport or commercial flights. International media, tv-stations, journalists and photographers will travel using their own means of transport and will be accredited to the **Yellow zone**. Upon arrival all groups that are not pre-tested are subject to a COVID-19 test at Levi at their own cost. Depending on national health authority requirements all media groups are re-tested during the event.

A person coughing, sneezing or having elevated temp, above 37,5° C, is not allowed to access any media premises, even outdoors and will be removed by LOC, if met. Immediate quarantine will take place on the cost of the person him/herself. LOC holds the right to do body temperature measurements in order to secure everyone's health.

Rules to access to media corridor only

- 1,5m distance to athlete
- no cell phones or similar, only proper microphones with changeable mic cover
- Live tv platform 1,5m distance, limited number people per platform size or 1 journalist and one cameraman

Other considerations

- No winners interviews, however these must be done e.g. FIS, live feed, share via platforms, to be decided how to record video and sound.
- TV compound: individual toilets per production groups, no mixing.
- Interviews: only from a distance with a long mic stand, mic cover must be changed between each interview, masks all, only journalist and cameraman. No indoor interviews unless separately agreed with the team's media attachea. LOC will not carry any costs or consequences.

Groups and accreditations

- FIS: two persons who must be included in the **Red zone**. If the second person is a video/photo from another company this must be clearly stated.
- Infront: **Red / Yellow Zone**, Italian origin, visits to any other countries from the last 30 days must be stated, also through which countries travels have taken place, link person from YLE (YLE bubble), crossing two groups!
- TV production / Videpe Oy: group of 40 people. **Red / Yellow Zone**, travel info for 30 days to be requested.
- Host broadcaster YLE: **Yellow Zone**, crossing with other groups, travel history
- MagnumLive: video and sound **Yellow zone**
- Live tvs: accommodation per teams per nation **Yellow Zone**. Expected boradcaters
 - Austria ORF: 15 person risk level elevated, testing, travel history, no mingling
 - Austria Radio Ö3: 1 person
 - Germany ARD/ZDF: 20 persons tv, risk level elevated, testing, travel history, no mingling
 - Switzerland SRG: 3 persons same as previous
 - Norway NRK: 4 persons same as previous
 - Sweden SVT: tv 4 persons, radio 2 persons
 - Finland LOCs communication team: 5 persons

International Ski Federation (FIS)

A delegate of approximately 10 ppl from several nations travel from Central Europe from the previous World Cup race held in Austria.

In scenario 1 members of FIS will travel with the charter flight coordinated by the LOC of Levi. Port of departure TBC. The FIS members are traveling as a "cohort" from a previous World Cup Race, where they have been tested or a test is required after the previous event. Entry to Finland and accreditation by any other travel means is not possible. Return to point of origin is organised in similar fashion.

The FIS members are tested in the previous race or prior to joining the flight. All participants are required to prove a negative COVID-19 test result no older than 3 days in order to enter Levi charter. Upon arrival at Kittilä airport the local health authority may require an additional test. From the airport there is transfer to the ski resort and accommodation organized by the LOC.

In scenario 2 FIS members travel using commercial flights to Finland / Levi following then prevailing national regulations. Upon arrival to Levi FIS members will travel directly to their respective accommodation for accreditation and check-in and follow isolation rules thereon. Testing is required according to national health regulations and / or FIS testing protocol prior accreditation.

FIS officials stay in the same accommodation with athletes and teams as these groups also cross and work together during the event. The group is accredited to the **Red zone**. Each hotel has their own security plan described in section "Facilities". FIS members will be using single rooms. Each hotel has the opportunity for quarantine in isolation if needed. The members will be obligated to follow FIS protocol (annex) and will not move in public.

Partners and vendors

Partners and vendors are accredited with green along with the public. They are mainly living in the area of Kittilä (Levi). The size of the group is 50 to 100. Some are travelling from the capital Helsinki area either with the private cars or domestic flights. This group will have the same hygiene, isolation etc. instructions as other groups.

Local Organising Committee (LOC)

LOC comprises key personnel of the race. This 20-25 person group will work together prior and during the race prioritizing online technology and small meetings. All key persons placed within the **Red bubble** will be tested for COVID-19 3 days prior to the event and those working with other Red zone groups will be included in cohorts for accommodation and logistics. Team leads are accredited into their respective zones.

LOC will be based in Levi a week prior to the event. This all Finnish group is partly locals and the rest will travel using ground transport. Race crew will stay with others working on the red zone etc. Substitutes to be organised for a few key roles. The primary and substitute should not live together nor work together indoors.

Technique

- 8-10 persons in total. Mostly accredited to the **yellow zone**. Two accreditations to the red zone and accommodation in the same cohort with the teams in case international TV broadcast require working with teams. These two will be obligated Covid-19 tests no older than 3 days.
- Travelling from the capital Helsinki area either with the private cars or domestic flights.
- The main team will be living in their own cabin. Food services are arranged with the production crew.
- Technicians (2 persons) who may share some spaces with the athletes are staying in hotel dedicated teams' cohorts. Separate meal times from athletes.
- Will be required to download tracing app Vilkku prior to arrival

Builders (Tents, platforms)

- 10 - 12 persons
- Travelling from the capital Helsinki area either with the private cars or domestic flights.

- The main team will be living in their own cabin. Food services are arranged with the production crew.
- This team will leave Levi on Thursday before teams arrive and come back on Sunday evening. No communication/socialisation with race crew or teams.
- Will communicate race crew, who are not in connection with the teams, before the event
- Will be required to download tracing app Vilkku prior to arrival

Volunteers

Levi World Cup is using a significant amount of volunteers to run the race. All volunteers travel to / from Levi using their own ground transportation. Larger groups may travel as cohorts. No international workers are invited for the 2020 race, all participants are Finnish.

Accommodation will be organised in Ski Lodges with the aim of splitting sectors to cabins and creating cells that travel, house and work together.

Number of volunteers by sector;

- sectors 12
- gate crew 50
- NTJ (special crew) 10
- slippers 30
- ski school for the whole week 12, Thu - Sun 25
- gate judges if needed 15
- first aid 15
- secretary/timing/doctors 11
- video control 1-2
- banderol group 6
- security (Lappia) 20
- building 10 (working Monday-Monday)
- ticket check 10

Total 200

Volunteers details

1. Volunteers within the **red bubble** will be tested prior to the event and all volunteers according to national health regulations if necessary.
2. Volunteers should work in smaller groups (no more than 6) and consistently stay within that crew.
3. Ideally those that room together - crew together.
4. These crews should do their best to minimize exposure to other crews.
5. Car-pooling should be with your roommates or crew team.
6. Large social gatherings (large potluck dinners) are to be prohibited.

Volunteer DOs and DONTs

- FIS protocol applies to volunteers as a designated population within "snowflake"
- No welcome get together on Friday
- No dining out prior or during the event
- No Volunteer Wrap Party

- Volunteer communication through the usage of virtual technology - work space groups
- Volunteer gifting (hoodie, beanie) - room drop outside the door of volunteers on a set day and time (exchanges by appointment only)
- Volunteers and contractors will be required to download tracing app Vilkku prior to arrival

Volunteers will be accredited to their respective working stations. Course crew will be the only group to receive access to “Red” -zone at the field of play.

Public & Guests

The Levi World Cup will welcome a limited number (3500) of public to the race event - final number will be agreed with the authorities closer to the event. All tickets are to be sold in advance online allowing the LOC to contact everyone attending prior, during and after the event. No international fans or guests are invited. The LOC will also host a small number of corporate guests (50-100) who will be pre-screened with a health questionnaire. The movement of the public and guests will be limited to Green -zone on the event area map. This is made to ensure the public will not mix with other participating groups beyond volunteers working merely in the green zone. Furthermore the following changes will be made to ensure health and safety;

- No public event beyond the Race
- No VIP events in the Finish Area
- No spectators in the Finish Area ie no grandstand
- No bar tent
- Spectator viewing in limited zones and from the fences throughout the course
- Vilkku -app download mandatory for all

More details of health and safety precautions for the public in section Facilities.

FACILITIES

Kittilä Airport

All groups arriving at Levi via airplane will travel through Kittilä airport and its border control station. Flight schedules will allow enough space at the airport. Only one flight arriving /departing per hour at the Kittilä airport allows cohort to isolate themselves from public at the airport. At the border control, luggage hall and other facilities masks to be worn and hand sanitizers available. People flow;

- the plane is to be disembarked in groups in order to maintain safety distances.
- 70 ppl max at the border control and luggage hall at once
- (option to transport luggage to the hotels directly)
- a designated service desk for car rentals in luggage hall
- exit through luggage hall
- Covid-19 test facility for mass testing and individual test
- Upon departure check in groups through regular check-in
- Designated departure hall after security

Office facilities

Accreditation

- Accreditations and lift passes delivered to accommodation for each group
- Only to be given out to individuals with appropriate pre-event information in Covid-19 passport
- Accreditation withdrawals according to FIS guidelines

Race Office

- Hotel Panorama and virtual meeting room
- Team information sent by email prior to the arrival to the teams: including hotel information and arrival instructions
- Checking of entries by email - the accommodation invoice will be put together accordingly
- Distribution of lift tickets and accreditations - prepared prior and delivered to the hotels directly
- Virtual race office available

Team Captains' meetings

- Use of virtual technology OR
- Physical TCM in one of the Red -zone hotels

FIS testing room

- Assigned their own work space at the red zone hotels

Team finance

- Virtual access OR
- Assigned work space in the race office with plexi-glass
- Invoices to be sent according to entries, CC payments at the office
- Visits to the office by appointment only

Race administration

- Virtual meetings every morning

Media Center

- No media accreditation without accommodation reservation through the LOC or set up time for media accreditation pick up.
- All event information available only in digital format. In case printed material is needed, this must be requested via email.
- Only one Media Center available. For camera men sub media center available only by reservation made before hand (PAX 15).
- Transportation to and at the race venue, only using the media's own transportation.
- Limited Media Centre access assigned only to those who are long-haul or over-night and those, who are required to file on deadline.
- Long-haul and over-night media will be required to book at the designated hotel in order to receive access to the Media Centre.
- Each person will have a designated seat with distance according to local rules.
- Hand sanitizer stations at all entry points of doors and cafeteria-style collection line, which must be used when entering the Media Center and when collecting beverages and food.
- Masks must be worn when moving in the Media Center, while seated masks can be taken off. Proper storage e.g. a dedicated envelope for the removed mask will be provided by LOC.
- Hot and cold beverages and a grab n go lunch assembled for the media by a dedicated food service person.
- Increased frequency of cleaning and disinfecting with registered chemicals, proven effective in preventing the transmission of COVID-19, with special attention to high-touch points.

- Masks and gloves for all food service workers and volunteers.
- Dedicated washrooms cleaned hourly displaying timesheets

Infront office

- Assigned their own work space at a yellow zone hotel

HOTELS AND SKI LODGES

Hotels will be limited to three for the 2020 Race. Hotels Panorama and Sokos are designated for Red -zone accredited groups and individuals. There will be no tourists or guests residing in buildings designated for these groups. Hotel Hullu Poro is a designated media hotel with parts of the LOC. Parts of the hotel will be designated to the Race. Hotel specific security plans will be published closer to the race

Pre-stay

- Teams will be asked to designate one team liaison to handle hotel matters to help limit exposure to hotel employees during their stay
- Each team, volunteer and stakeholder will receive communication from LOC in collaboration with the hotel prior to arrival providing information on general expectations, arrival and departure processes, hotel services and amenities, parking, luggage, etc.
- Teams will be assigned a door to access the hotel and given instructions for check-in and stay prior to arrival
- Teams, volunteers and stakeholders will be required to download tracing app Vilku prior to arrival

Arrival + departure

- Teams will unload/load luggage and equipment from/to a luggage transport at their designated door and
- Self-parking for rental cars
- Gloves and masks for all persons

Welcome + Check in

- Gloved and masked LOC personnel on site
- Front desk plexi-glass separation
- Two dedicated check in desks for teams at the front desk in the Lobby
- Each team will receive a team package of disinfected keys for guest rooms
- The designated team liaison will be the only person able to approach the check in desk to pick-up the team package - race office personnel helps to put together the package and includes the accreditations and lift cards according to entries
- Volunteers and stakeholders will check in at the front desk in the Lobby or designated check-in

Lobby + public spaces

- Hand sanitizer stations in key areas throughout hotel
- Increased frequency of cleaning and disinfecting with special attention to high-touch points
- Cleaning time sheets displayed
- Removal of coffee and water stations
- Lobby seating area rearranged to facilitate physical distancing
- Signage and markers communicating physical distancing protocols in public spaces

Elevators / staircases

- Signage to indicate maximum occupancy of four persons or a single cohort to promote physical distancing
- Increased frequency of cleaning and disinfecting
- Hand sanitizer available in elevator foyers

Public washrooms

- Antibacterial soap year-round
- Hand sanitizer stations located outside washrooms
- High-touch disinfecting

Check out

- Dedicated team liaison will schedule a time with Team Finance for all checkout processes including team administration, and hotel incidentals
- Team Finance will notify by email the front desk as soon as a team checks out
- Departure to the airport according to schedule to facilitate smooth check-in

Employees

- Mandatory screening for all employees upon arrival, which may include a temperature check
- Masks worn by all employees
- Gloves and PPE worn as needed by position
- Hand sanitizer dispensers at entrance and throughout all work spaces and employee common areas
- Physical distancing observed in all employee areas, including dining areas and in hotel communication sessions
- Adjusted shift start times to promote physical distancing of employees
- Limiting congregation or teaming of employees in tasks such as housekeeping
- Clear signage re social distancing and hygiene
- Increased frequency of cleaning and disinfection in all common areas including cafeteria, locker room, washrooms, etc.
- COVID-19 related training and retooling provided to all employees
- Signage and markers communicating physical distancing protocols throughout employee areas

Housekeeping

- No housekeeping service while guest are in room (no day cleaning)
- PPE worn by all room attendants and changed after each guest room
- Enhanced focus on disinfection of all guest room touchpoints, plus continuation of extensive training and auditing
- Continued use of disinfecting

Quarantine

- Guests that display COVID-19 symptoms would be required to quarantine in the same room they are staying, along with their roommates for up to 14 days or checkout immediately
- In-room dining would be delivered as ordered at regular pricing
- Guests and roommates would be encouraged to book an appointment with the clinic in Levi to get tested to shorten the quarantine time
- A time to leave and return to the hotel for COVID-19 testing must be arranged with a security team for escort and deliver new masks and gloves to the guest
- If the testing comes back negative they are free to leave and return to the normal standards of the hotel
- If a guest is quarantined, no new reservations around the quarantined room would be booked
- Contact Tracing App Vilkku used to mitigate further infection

Teams / Groups

- Keep teams / groups together on floors considering room types / 2-3 teams in each floor
- Book team accommodation as close as possible to their designated entry
- Removal of amenities including tea/coffee maker and condiments, pens and stationery, hotel collateral, print magazines, alarm clock, etc. - items available upon request, and disinfected between each use - new items provided where possible

Food and dining

- Hotels to serve teams in designated dining halls via a cafeteria-style service including hot and cold food and beverages
- Assigned team meal times unless physical distancing is possible
- Assigned team seating in dining halls
- Change of items/disinfection of all touchpoints on table between diners
- Increased frequency of cleaning and disinfecting for both front and back of house
- Masks for all restaurant workers
- Hotel dining services should cover all meals. Teams, FIS and Infront who receive accreditation for Teams Meals must adhere to dining only in the designated hotels and refrain from dining in Levi restaurants & bars

Team workout rooms

- Workout facilities for teams are divided to different hotel gyms, the facilities are reserved for team usage only selected time periods and disinfected in between users

Ski rooms (Teams)

- Located in the garage at Sokos Hotel
- All nations have their own Ski rooms by FIS World Cup rules

Ski Lodge Accommodation (Volunteers & LOC)

- lodging in cabins for 6-10 persons, one cabin is always filled with people working together
- lodging starts from Thu until Sun/Mon after the race
- ingredients for breakfast will be delivered to the cabins and everyone eats breakfast there
- volunteers are advised to take a thermos bottle with them to have warm drinks in it and make it at the cabin, same applies to water bottles
- one person from the cabin will go and get the dinner from a delivery point at a pick up time which is given to the cabin so that everyone is not at the same time. Volunteers eat the dinner in the cabin
- lunch will be served in to-go lunch bags
- there will be masks and hand sanitizers in every cabin
- an additional cabin will be reserved in order to isolate people feeling unwell or tested positive

Levi Ski Resort

In all the indoor areas of Levi Ski Resort, there are signs to remind about safety distances, washing hands and other instructions related to aims to prevent spreading COVID-19. People flow with clear signs placed both on the floor and rack. Maximum number of people is 75 % of the normal capacity.

Field of Play

- All the different cohort groups have their separate areas the race and event area - see maps

Parking

- Dedicated World Cup parking for teams
- A dedicated parking area for volunteers and media

Training and warm-up

- Training facilities according to the snow conditions at Front Slope or Alpine Training Park
- Teams will drive directly from their accommodation to training slope
- Training area and lift access will be limited to teams only during warm-up / training hours
- Only team members share lifts
- Social distancing at the slope and when waiting for the lift

Lift access (Gondola)

- Lift sharing is limited to cohorts ie Red / Blue etc.
- Only team members should share lifts
- Increased frequency of cleaning and disinfecting with special attention to high-touch points

Team hospitality

- Team hospitality in Gondola hall (bottom of the lift) and in a tent outside
- Teams' entry Team Hospitality and Ski Storage via designated access for 1. athletes 2. staff
- Gloved and masked welcome volunteer checks accreditation
- Teams will be assigned tables/zones to be used throughout the event
- Cafeteria-style assembly line serving hot and cold food and beverage choices each location
- Additional employee's are scheduled to ensure enhanced cleaned and efficient food service
- Change of items/disinfection of all touchpoints on table and chairs between diners
- Hand sanitizer stations at all entry points of doors and cafeteria-style assembly lines
- Increased frequency of cleaning and disinfecting with special attention to high-touch points
- Masks and gloves for all restaurant workers and volunteers, front and back of house

Start Hut

- Limited number of athletes, LOC staff and Media
- Disinfection and sanitization of surfaces and touchpoints will be conducted after each athlete
- Masks and gloves for all volunteers

Event finish area (Mixed zone)

- Hand sanitizer stations in key areas
- Increased frequency of cleaning and disinfecting with special attention to high-touch points
- Masks and gloves for all volunteers
- For all the noted zones/areas:
 - Live TV area
 - FIS restricted area
 - FIS equipment tent
 - Equipment tent (separate)
 - Leader board + area
 - Media entry
 - Photo platform
 - Team and industry area
 - Storage container

Podium

- No champagne, no flowers - only picture with the reindeer & Santa 2 meters away

- According to FIS approved TV-plan

Spectator finish area

- Closed to spectators
- Athlete corridor from the Finish Area to the Team Lounge or parking to reduce fan exposure

Operations headquarters at the base of the gondola

- Those who require access to the operations headquarters will be determined by the LOC and provided awareness, education and training on how the area and equipment is to be handled
- Access and distribution of radios and equipment will be determined by the LOC to ensure proper disinfection and sanitization of the area and equipment - distribution is made directly to the users lodgings
- Hand sanitizer stations at each location
- Increased frequency of cleaning and disinfecting with special attention to high-touch points
- Signage and markers communicating physical distancing and mask wearing protocols

Volunteers

- traveling from the lodge to the race area will be with cars, same cabin same car
- lunch will be in bags which will be delivered to everyone when they arrive to the venue in the morning and the volunteers carry it
- some extra water bottles will be available at the venue
- drills and other tools will be distributed by the lift by name to every group
- radios will be delivered to the ski lodges with the chargers to those who need them
- entrance to the lift is from skiers left
- everyone will have a mask

Volunteer tent

- Volunteer ski storage
- Place for backpacks
- Hand sanitizer and extra masks
- Water bottles

Media area and compound (Yellow Zone)

- Access with accreditation only
- According to the compound plan
- Designated photo and Live-TV areas
- Distance to be maintained with Red -zone accredited
- Distancing throughout
- YLE studio

Public areas (Spectators)

Public is limited to pre sold tickets only. There will be no grandstand in order not to place people sitting next to each other. Tickets are sold only digitally in the webshop prior to the event, not at the gate. Contact information is to be asked in the digital ticket office in order to have the possibility to inform everybody in case on COVID-19 exposure. Vilku -app recommended for all.

Bar and cafeteria tents are not in use as they do not serve proper hand washing facilities. There will be one indoor cafeteria in the existing premises with proper toilets and hand washing areas. This cafeteria will take only 75 % of its normal capacity (500 pax) and all people will have seat. There are comprehensive COVID-19 instructions to be seen by all the customers. This area is only for the public

and no other groups will enter the area except catering staff dedicated only for this area. Customers will buy all the products from the counter. Products are stored in vitrins and served by the personnel.

Hospitality

The LOC is assessing the opportunity to invite corporate guests to the event. Hospitality is subject to similar arrangements as spectators above.

Onsite COVID-19 testing facilities

There will be a COVID-19 testing center at Levi with flexible opening hours. Specifics TBC

Testing on site will be conducted using a rapid PCR device and / or antigene test. Results are available in 12 hours. Testing devices will be delivered by either municipality / LSHP or a private contractor and tests are analysed in respective laboratories

Clean and dirty facilities for EA and covid cases will be arranged

Transportation to testing facility using designated Covid-19 ambulance, designated taxis and / or using team transport.

COVID - 19 RESPONSE

Prior the event

Prior to the event: People are asked to stay home if they don't feel well!

1. No one with symptoms considered indicative of potential COVID-19 within 10 days prior to arrival are allowed to be involved in the event and should stay home.
2. No one who has been in contact with anyone with known COVID-19 or potential COVID-19 symptoms within 14 days of arrival are allowed to be involved in the event and should stay home.
3. A health questionnaire is sent to all accredited groups and participants - answering YES to one or more questions results in exclusion from the event
4. Accredited groups are pre-screened for their whereabouts in the past 14 days
5. Covid-19 pre test for international groups, selected LOC members and media representatives

COVID-19 symptoms include:

- Cough
 - Fever
 - Shortness of breath
 - Runny nose
 - Sore throat
 - Muscle and joint aches
 - Nausea, vomiting or diarrhea
 - Severe exhaustion/fatigue
- Decreased ability to taste and / or smell

Each participating group is required to follow group specific instructions prior the event;

During the event

During the event:

1. A positive result will be automatically reported to the Event Covid-19 Task Force and National health authorities.
2. National procedures for isolation and quarantine apply
3. Anyone who develops symptoms indicative of potential COVID-19 must isolate immediately, seek for a Covid-19 test immediately and stay isolated until the test result is available, and notify the Event task force of the event through approved channels (team medical lead, crew chief, etc.). Contact details to be found in this documents
4. Testing for COVID-19 will be arranged in Levi as described in section Facilities.
5. A positive person will be expected to follow authorities instructions and respect a 14 day isolation from the first day of symptoms. An isolation room until the quarantine can be lifted will be provided in the accommodation facility or authority can assign one.
6. Anyone who has been in close contact with a positive person will be set into quarantine by the health authority. Quarantine will last 14 days from the last contact with a positive person. Instructions to be given by event Covid-19 coordinator

Steps in place to minimize spread:

There are two critical steps to minimize the spread of COVID-19.

1. Minimize close contact between individuals and limit the number of people to which they are exposed,
2. Keep clear records for easy contact tracing should a COVID-19 case develop in order to identify and isolate all contacts of a known positive case.
3. Hygiene plan for each facility - clear signage, sufficient amount of hand disinfectants per venue and opportunity for frequent hand washing.
4. Clear communication to and through event task force when feeling unwell
5. Daily self-assessment

For all participants in the event:

1. LOC must have clear documentation of contact information including accurate phone contact information.
2. LOC must have clear documentation of those in close rooming contact (all those rooming in the same room).
3. Everyone involved must be clear that this information will be shared with Lapland Medical Centre to enable rapid contact tracing if a participant at the event becomes ill with COVID-19.

Special considerations for the medical crew:

It would be incredibly rare for any athlete competing to have an active case of COVID-19 and suffer a critical race injury requiring advanced airway management. This said, enhanced PPE capabilities should be applied in the medical centre.

1. During an event requiring intervention, only those absolutely required for the care of the patient are permitted to be in the space (Race doctor, team doctor / manager, emergency personnel).
2. Proper PPE will be required for these interventions including gowns, gloves, N95 masks and facial shields. (NB as N95 (FFP2 / FFP3) masks are a fitted mask, medical team persons with potential involvement in the medical bay will be required to bring their own N95 mask).

NOTE:

- Usage of the trace app Vilkku <https://koronavilkku.fi/en/>
- Testing for COVID-19 available for symptomatic travellers in Lapland without cost

Other considerations

- Included in packages for all volunteers, and athletes/teams a personal size hand sanitizer, and facial mask/covering.
- Mask wearing is mandatory in all facilities indoors excluding assigned roommates and when two-metre physical distancing cannot be maintained outdoors.
- Everyone is asked to download and use Korona Vilkku app for all those involved in the event. This will facilitate contact tracing should there be a positive case.
- Frequent hand washing and sanitizing
- Respiratory hygiene (cough into your elbow)
- Avoid touching of the face
- Responsible distancing, non-physical greetings
- Daily health assessment
- Everyone must be very firm on the policy of reporting any illness to the crew chief and chiefs of medical as appropriate.

After the event:

1. Anyone who develops symptoms after the event must self-isolate, get tested for COVID-19 and ensure LOC is notified immediately.
2. After leaving Finland international groups are asked to report symptoms developed during the race to allow necessary action

Covid-19 Health Coordinator and event Task Force

LOC will appoint a covid-19 coordinator who is an expert in infectious diseases and responsible for following;

- Close cooperation to public health authorities
- Up-to-date knowledge of national health directives
- Advising the LOC on prevention and mitigation
- Advising the LOC on testing and protocols
- Leading measures together with municipality doctors in case of a positive case

Event task force is formed of senior officials of FIS, LOC, NSA and Covid-19 coordinator nominated by the national / local health authority. The taskforce is responsible for

- assessment of health issues during the event
- communication to the teams in case of illness / Covid-19
- communication plan

Line of Command & Communication

The Event Management Group and Covid-19 task force will have close communication throughout the event planning process and event days. Event related decisions are made in mutual understanding. Health and Covid-19 decisions will be made in Event task force and by the national health authority (coordinated by Covid-19 coordinator). When necessary, the experts of different fields are consulted.

All the communication is to be as proactive as possible yet carefully considered. Communication will be executed by the LSHP and Kittilä municipality in a case of a positive Covid-19 case. It will be aligned with FIS and InFront communication if possible. Communications flow towards teams and international medias for a positive Covid-19 case will follow FIS Covid -19 Risk management and testing protocol (annex).

The Management and Communication Group during the Event

Chairman of LOC	Jouni Palosaari jouni.palosaari@levi.fi +358400690770
Secretary General	Iiro Kaukonieni iiro.kaukonieni@skisport.fi +358400519422
Event Director	Satu Pesonen satu.pesonen@levi.fi +358408209419
LOC Race Director	Petri Tuomikoski petri.tuomikoski@levi.fi +358207984256
Chief of Security	Heikki Saarensalmi heikki.saarensalmi@levi.fi +358207960200
Teams coordinator	Natalia Lahtela natalia.lahtela@skisport.fi +358400818484
Communications manager	Ellinora Pelamo ellinora.pelamo@skisport.fi +358509190174
Covid-19 coordinator	Markku Broas markku.broas@lshp.fi

Covid-19 Event task force

FIS Race Director	Peter Gerdol gerdol@fisski.com
Secretary General	Iiro Kaukonieni iiro.kaukonieni@skisport.fi +358400519422
Event Director	Satu Pesonen satu.pesonen@levi.fi +358408209419
Covid-19 coordinator	Markku Broas markku.broas@lshp.fi

Lapland Hospital District - testing and isolation

Key Personnel

Chairman of LOC	Jouni Palosaari jouni.palosaari@levi.fi +358400690770
Secretary General	Iiro Kaukonieni iiro.kaukonieni@skisport.fi +358400519422
Event Director	Satu Pesonen satu.pesonen@levi.fi +358408209419
Covid-19 coordinator	Markku Broas markku.broas@lshp.fi
Security	Heikki Saarensalmi heikki.saarensalmi@levi.fi +358207960200

RED bubble (team leads)

FIS Race Director	Peter Gerdol gerdol@fisski.com
LOC Race Director	Petri Tuomikoski petri.tuomikoski@skisport.fi +358400341911
LOC Race Director Assistant	Jukka Markkanen jukka.markkanen@levi.fi +358406734345
Finish area	Teo Jeskanen Teo.Jeskanen@santasport.fi +358400623821
Teams coordinator	Natalia Lahtela natalia.lahtela@skisport.fi +358400818484
Race office	Suvi Määttä suvi.maatta@hotmail.com +358405937048
Team attache, ski rooms / Sokos	Sussi Åström sussiastrom@me.com +358505002968
Competition secretary	Teija Pöytälaakso teija.poytalaaksi@netikka.fi +358405354662
Finance office	Laura Hämäläinen finance@skisport.fi +358456302924
Travel	Nunnu Kivikari nunnu.kivikari@skisport.fi +358400701818
Medical Service	Risto Kempainen risto.j.kempainen@fimnet.fi

Timing	Juha Mikkonen juha.mikkonen@kaamos.net +358400522667
Hand timing	Mia Aatamila mia.aatamila@autoaatamila.fi +358504145909
Start area	Jaana Karhila jaana.karhila@levi.fi +358505811451

Yellow bubble (team leads)

FIS Media coordinator	Giulia Candiago candiago@fisski.com
Infront coordinator / TV	Maddalena Ercolani Maddalena.Ercolani@infrontsports.com
Infront coordinator / marketing	Lida Magistris lida.magistris@infrontsports.com
Media coordinator	Katri Rouvali katri.rouvali@icloud.com +4366475086678
Communications manager	Ellinora Pelamo ellinora.pelamo@skisport.fi +358509190174
Accreditation coordinator	Kirsi Hänninen kirsi.hanninen@phnet.fi +358500282505
Host Broadcaster Yle	Jukka Ahonen jukka.ahonen@yle.fi +358408603811
TV Production Videpe	Joel Helenius joel.helenius@videpe.fi +358440967717
Technical crew	Matti Rauvanto matti.rauvanto@magnumlive.fi +358400411379
Announcers	Aleksi Halen aleksi.halen@gmail.com +358440694746

Blue bubble (team leads)

LOC Race Director Assistant 2	Pertti Kuivalainen p.kuivalainen@gmail.com +358405372105
Volunteer coordinator	Marja Rauhalampi marja.rauhalampi@levi.fi +358505940628

Green accreditation (team leads)

Venue plan	Pilvi Mäenpuro pilvi.maenpuro@levi.fi +358408390314
Temporary constructions	Juha Vanhanen juha.vanhanen@levi.fi +358417301969
Public catering	Salla Tapojärvi salla.tapojarvi@levi.fi +358442429940
Accommodation	Laura Pulkkinen laura.pulkkinen@levi.fi +358407143067
Snow condition	Hannu Mäkitalo hannu.makitalo@levi.fi
Electricity	Kari Laitinen kari.laitinen@levi.fi
Kittilä Airport Manager	Kimmo Liukkonen kimmo.liukkonen@finavia.fi +358 40 590 6673

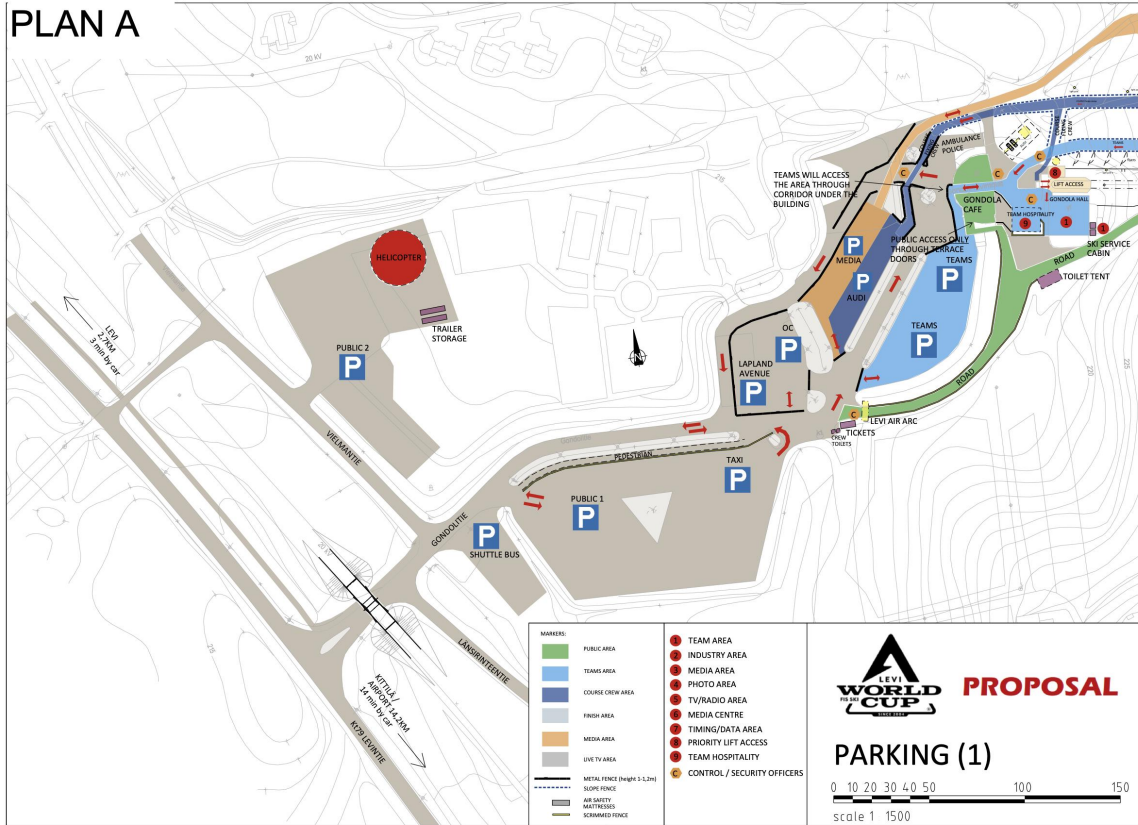
All key persons will be nominated with a backup person in case of illness symptoms. Backup people are allowed to meet key persons outdoors as long as social distancing is taken care of. However, the persons are not allowed to be in the same car nor same room to avoid coincidental illness.

PROGRAM

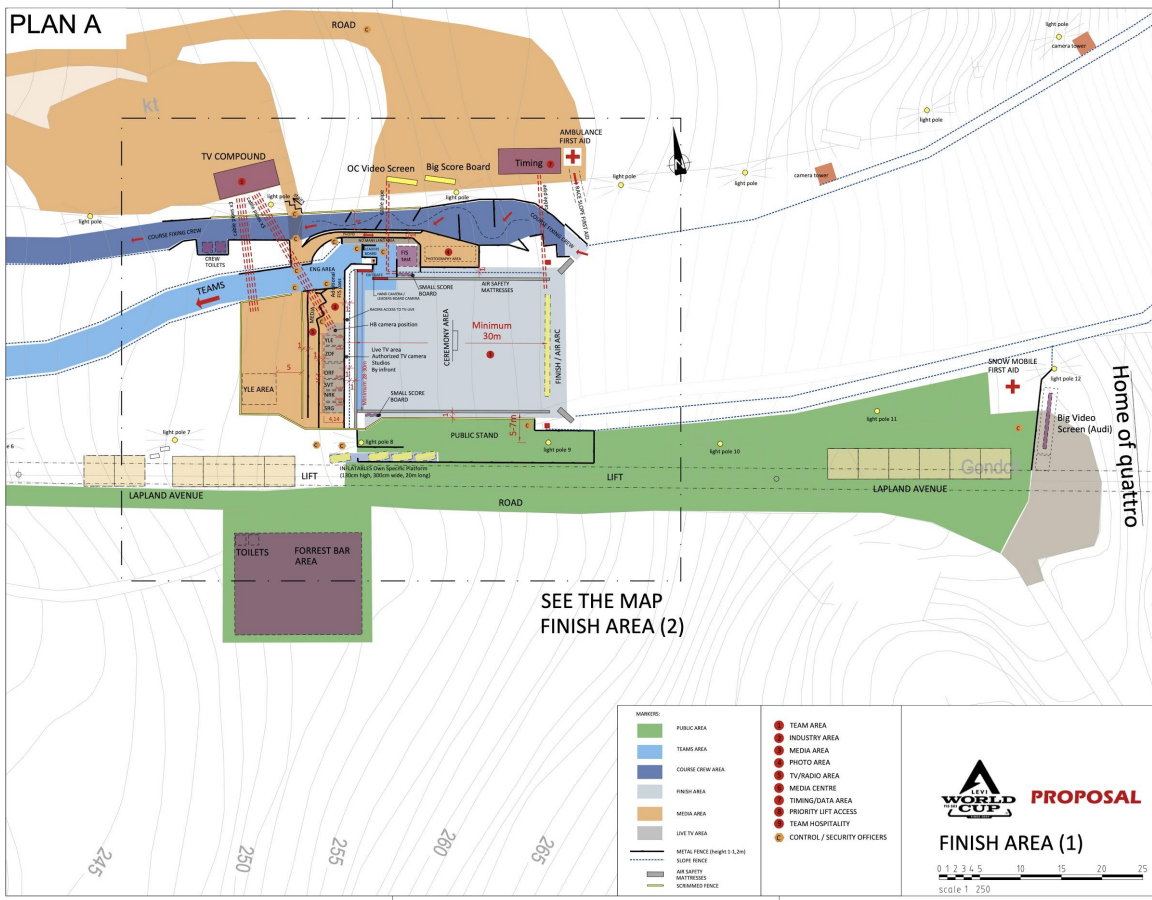
19.11.2020	18:00 - 20:00	Teams arrive to Kittilä with charter flight
20.11.2020	11:00	Free skiing
	17:00	Team Captain's Meeting
21.11.2020	11:15	Women's slalom 1. run
	14:15	Women's slalom 2. run
	17:00	Team Captain's Meeting
22.11.2020	11:15	Women's slalom 1. run
	14:15	Women's slalom 2. run
	18:00 - 20:00	Teams departure to Kittilä with charter flight

MAPS

PLAN A



PLAN A



SEE THE MAP
FINISH AREA (2)

