

HYGIENE CONCEPT, MEASURES AND PROCEDURES

Viessmann FIS Nordic Combined World Cup

SCHWARZWALDPOKAL Schonach 19.03. – 21.03.2021



Millora Consulting GmbH
Gutachstrasse 34 A, 79822 Titisee-Neustadt

E-Mail: info@millora.de

HYGIENE CONCEPT, MEASURES AND PROCEDURES

Viessmann FIS Nordic Combined World Cup
SCHWARZWALDPOKAL Schonach 19.03. – 21.03.2021



Table of Contents

1. INTRODUCTION:	2
2. RESPONSIBILITIES.....	3
2.1 ORGANIZER.....	3
2.2 COVID-19/ HEALTH COORDINATOR	3
2.3 ORGANIZING COMMITTEE.....	3
2.4 LOCAL HEALTH AUTHORITY	3
3. FRAMING	4
3.1 SARS-CoV-2.....	5
3.1.1 Transmission routes SARS-CoV-2.....	5
3.1.2 Symptoms SARS-CoV-2	5
3.1.3 SARS-CoV-2 risks during sporting events.....	6
4. BASIC RULES AND REGULATIONS	6
4.1 PERSONAL INFORMATION.....	7
4.2 PCR – TESTING.....	7
5. HYGIENE MEASURES AND OPERATING MEASURES	9
5.1 CORE – HYGIENE MEASURES	10
5.2 SPECIAL HYGIENE MEASURES AND PROCEDURES.....	12
5.2.1 Accommodations.....	12
5.2.2 Groups and Safety Zones.....	14
5.2.3 Specific Event Processes	20
5.2.4 Room Descriptions and Room Capacities	23
5.2.5 Signage, Directional Markers	28
5.2.6 Catering.....	29
5.3 CLEANING/DISINFECTION.....	29
5.3.1 Restrooms/Toilets/WC	29
5.3.2 Organizational and Lounge areas.....	30
6 COMMUNICATION.....	31
6.1 WHAT TO DO IN THE EVENT OF AN INFECTION OR SUSPECTED INFECTION SARS-COV-2	31
6.2 COMMUNICATION PROCESS IN CASE OF SUSPECTED INFECTION/INFECTION WITH SARS-CoV-2	33
7 APPENDICES.....	

HYGIENE CONCEPT, MEASURES AND PROCEDURES

Viessmann FIS Nordic Combined World Cup
SCHWARZWALDPOKAL Schonach 19.03. – 21.03.2021



1. Introduction:

Sport: in times of a pandemic – improving safety during participation in training, and competitions for athletes, teams, and support staff.

The Corona Pandemic (SARS-CoV-2) has impacted countless numbers of people in all areas of life across the globe. The dynamic course of the SARS-CoV-2 pandemic is a viable threat to everyone. It is a serious threat to public safety, civil order and is having a significant impact on daily life.

Safely organized sporting events can serve as a positive role model for the organization and implementation of other events and gatherings across all sectors of society. It is, therefore, extremely important that guidelines, ordinances, and laws be strictly adhered to.

The hygiene rules and procedural measures described below aim to ensure the greatest possible protection against infection throughout the sporting event. The health and safety of all those involved in the event (athletes, trainers, officials, staff, guests) is of utmost importance.

Millora Consulting GmbH
Gutachstrasse 34 A
79822 Titisee-Neustadt

HYGIENE CONCEPT, MEASURES AND PROCEDURES

Viessmann FIS Nordic Combined World Cup
SCHWARZWALDPOKAL Schonach 19.03. – 21.03.2021



2. Responsibilities

City administrators and the local organizer are responsible for the safe operation of the event and to ensure adherence to the hygiene measures.

The COVID-19/Health Coordinator plays a key role in this task. The Health Coordinator will plan, control, and document the implementation of and compliance with the specified hygiene rules and process measures. They are the contact and interface person between local health authorities and organizers.

2.1 Organizer

<i>FIS</i>	<i>Fédération Internationale de Ski</i>
<i>DSV</i>	<i>German Ski Association</i>
<i>Schonach</i>	<i>SKICLUB SCHONACH e.V.</i> <i>Haus des Gastes</i> <i>Hauptstraße 6</i> <i>D – 78136 Schonach im Schwarzwald</i> <i>Tel.: +49 (0) 7722 964810</i>

2.2 COVID-19/ Health Coordinator

<i>Rainer Büche</i> <i>Certified Disinfectant</i>	<i>Tel.: +49 (0)171 - 5334756</i> <i>E-Mail: info@millora.de</i>
<i>Denis Scheel</i> <i>(Deputy Covid-19 Health Coordinator)</i>	

2.3 Organizing Committee

<i>Local Organizing Committee (LOC)</i>	<i>Jörg Frey (President)</i> <i>Gunter Schuster (Chairman Skiclub)</i>
	<i>Heidi Spitz (Secretary General)</i> <i>Tel.: +49 (0)170 2823247</i> <i>E-Mail: h.spitz@schonach.de</i>

2.4 Local Health Authority

<i>Health Department</i> <i>LK Schwarzwald-Baar</i>	<i>Landratsamt Schwarzwald-Baar</i> <i>Gesundheitsamt</i> <i>Herdstraße 4</i> <i>78050 Villingen-Schwenningen</i> <i>Tel.: +49 (0)7721 9137190</i> <i>E-Mail: gesundheitsamt@lrabk.de</i>
--	---

HYGIENE CONCEPT, MEASURES AND PROCEDURES

Viessmann FIS Nordic Combined World Cup
SCHWARZWALDPOKAL Schonach 19.03. – 21.03.2021



3. Framing

The current SARS-CoV-2 pandemic has necessitated the implementation of special hygiene rules and measures.

The following recommendations and measures are based on current scientific research and legal requirements/ordinances.

The Robert Koch Institute (RKI), the World Health Organization (WHO) and current German (national and local laws) serve as references. Additional recommendations have been taken from the *Deutscher Skiverband e.V.* (DSV) and the FIS current COVID-19 guidelines.

Scientific References:

Robert Koch Institut (RKI):

https://www.rki.de/DE/Content/InfAZ/N/Neuartiges_Coronavirus/Steckbrief.html

World Health Organization (WHO):

https://www.who.int/health-topics/coronavirus#tab=tab_1

Legal Requirements:

Infektionsschutzgesetz (IFSG)

Corona Verordnung des Landes Baden-Württemberg (CoronaVO BaWü)

Corona Verordnung Sport Baden-Württemberg (CoronaVO Sport)

Guidance:

Leitlinien Infektionsschutz

Sportart- und verbandspezifische Maßnahmen und Empfehlungen zum Infektionsschutz für den Deutschen Skiverband e.V.

Hygiene Standards

Hygiene Standards; Allgemeingültige Regelungen des Deutschen Olympischen Sportbundes (DOSB)

FIS Covid-19 Prevention Guidelines

FIS Covid-19 Prevention Guidelines_Nordic Combined Field of Play

https://assets.fis-ski.com/image/upload/v1602570934/fis-prod/assets/Covid-19_measurements_NC_field_of_play.pdf

HYGIENE CONCEPT, MEASURES AND PROCEDURES

Viessmann FIS Nordic Combined World Cup
SCHWARZWALDPOKAL Schonach 19.03. – 21.03.2021



3.1 SARS-CoV-2

Summary of some basic information regarding SARS-CoV-2.

3.1.1 SARS-CoV-2 Transmission

- The main transmission route of SARS-CoV-2 is the respiratory uptake of virus-containing particles (aerosols) that arise during breathing, coughing, speaking, and sneezing.
- Coughing and sneezing produce larger particles than speaking alone.
- Risks of transmission increases with proximity to the host.
- Transmission via contaminated surfaces, (particularly in the immediate vicinity of an infected person) has not been ruled out. Under laboratory conditions, SARS-CoV-2 has shown the ability to reproduce on surfaces, thus remaining infectious for some time.

Origin: RKI_Steckbrief_SARS-CoV-2 (Stand 25.01.2021)

3.1.2 SARS-CoV-2 Symptoms

- Fever
- Cough
- Stuffy or runny nose
- Altered or absent sense of smell and/or taste
- Pneumonia
- Additional symptoms include but are not limited to; shortness of breath, headache, body aches, nausea/vomiting, diarrhea, loss of appetite, weight loss, conjunctivitis, skin rash, swelling of the lymph nodes, apathy, somnolence.

Origin: RKI_Steckbrief_SARS-CoV-2 (Stand 25.01.2021)

HYGIENE CONCEPT, MEASURES AND PROCEDURES

Viessmann FIS Nordic Combined World Cup
SCHWARZWALDPOKAL Schonach 19.03. – 21.03.2021



3.1.3 SARS-CoV-2 Sporting Event Risks

- Gatherings of people/groups in small, cramped spaces.
- Physical closeness between teams, particularly in contact sports.
- Sharing of sports equipment.
- Extensive travel (regional, national, and international) and increased contact with persons (active, athletic, and logistical personnel) from different regions.
- Proximity during greeting, cheering, and competition.
- Shared use of communal rooms including changing rooms, showers, restrooms etc.
- Increased contact with persons outside of the sporting community, e.g., public transportation, visiting a restaurant, shopping contact with hotel guests.
- Contact with spectators (not applicable).

Origin: Leitlinien Infektionsschutz Deutscher Skiverband e.V.

4. Basic Rules and Regulations

- Without exception, NO visitors, spectators, or guests will be permitted onsite during the Viessmann FIS Ski Jumping World Cup event (January 29th – January 31st, 2021). This restriction includes training sessions, qualification events and the official ski jumping competitions.
- Only registered and accredited individuals may take part in the event or enter the event grounds. Each participant must be assigned to one of the groups defined under *point 5.2.2 Groups and Safety Zones*.
- The local organizer strives to keep the number of groups and the number of group members as small as possible (to minimize risk). Only necessary staff/helpers will be accredited.
- The organizer will provide staff/helpers with the necessary personal protective equipment (mouth/nose protection, gloves, protective suits) for the event (including additional backup).
- An **absolute ban** on the serving or consumption of alcoholic beverages will be in place for the duration of the sporting event. Without exception, persons who are recognizably intoxicated will be prohibited from entering the event site.

HYGIENE CONCEPT, MEASURES AND PROCEDURES

Viessmann FIS Nordic Combined World Cup
SCHWARZWALDPOKAL Schonach 19.03. – 21.03.2021



4.1 Personal Information

Contact information for all participants, helpers, organizers, and other attendees must be presented to gain accreditation. Contact information is necessary to trace potential contacts in the event of a positive test.

The contact details will be handled in accordance with the “*Datenschutz-Grundverordnung*” (DSGVO).

The recorded data will be destroyed after 4 weeks.

Note: If a person refuses to provide their contact details, accreditation will not take place and access to the event site will be denied.

4.2 PCR–Testing

The Local Organizing Committee (LOC) and the Covid-19 Health Coordinator are in constant contact with the local health authorities to update measures as needed.

For accreditation purposes:

- Arriving teams, officials and support staff must provide proof of a negative COVID-19 PCR test.
- At the time of accreditation, the test may be no older than 48 hours.
- The test results are to be uploaded to the individual’s Covid-19 FIS Passport.

Note:

Organizers are exploring the possibility of providing PCR testing in Schonach. Additional information will be relayed to teams in a timely manner. Please be aware that additional testing requirements may be added as the event draws closer.

HYGIENE CONCEPT, MEASURES AND PROCEDURES

Viessmann FIS Nordic Combined World Cup
SCHWARZWALDPOKAL Schonach 19.03. – 21.03.2021



If a previously SARS-CoV-2 infected person tests positive (again) for Covid-19, the Covid-19 Health Coordinator will inform the local Health Department. Event participation will then be determined by the local Health Department on an individual basis.

Note:

1. *If a participant has previously tested positive for SARS-CoV-2, we strongly recommend they keep with them any prior documentation/prior test results. This will facilitate Health Department decision making as it pertains to event participation.*
2. *Final decision regarding event participation with a positive PCR test lies with the local Health Department.*

For additional questions/concerns regarding prior positive COVID-19 tests or persistently positive test results despite resolved infection, please contact the local Health Department for further information/guidance.

Phone: +49 (0)7721 9137190
Office hours: Monday – Friday: 08:00 – 11:30
Monday - Wednesday: 14:00 – 16:00
Thursday: 14:00 – 17:30

National border entry and exit regulations remain in effect.

Due to the dynamic nature of the pandemic, please refer to the following frequently for current and updated recommendations with respect to entering Germany.

Additional information:

<https://www.baden-wuerttemberg.de/verordnung-fuer-ein-und-rueckreisende/>
<https://www.einreiseanmeldung.de/>

In the event of a suspected Covid-19 infection, the Covid-19 Health Coordinator will coordinate with the local health authority the course(s) of action. In the event of a positive PCR test result or onset of symptoms please contact the following for further information and guidance immediately.

PCR testing will be available on site in the event of a suspected infection.

Contact Person	Contact Information
Rainer Büche <i>Covid-19 Health Coordinator</i>	Tel: +49 (0)171 - 5334756 E-Mail: info@millora.de
Gesundheitsamt <i>LK Schwarzwald-Baar</i>	Landratsamt Schwarzwald-Baar Gesundheitsamt Herdstraße 4 78050 Villingen-Schwenningen Phone: +49 (0)7721 9137190 E-Mail: gesundheitsamt@lraskb.de



HYGIENE CONCEPT, MEASURES AND PROCEDURES

Viessmann FIS Nordic Combined World Cup
SCHWARZWALDPOKAL Schonach 19.03. – 21.03.2021



5. Hygiene Measures and Operating measures

The following points are essential to ensure the safe execution of the event!

Every person taking part in the sporting event (incl. athletes, trainers, officials, logistical staff, media representatives and volunteers) is to be informed and instructed in advance regarding hygiene rules/requirements/measures to ensure compliance. By applying for accreditation, the applicant acknowledges they have received and read the Hygiene Measures and consent to adhere to them.

Questions and concerns with respect to the hygiene measures should be directed to the Covid-19 Health Coordinator.

Contact Person	Contact Information
Rainer Büche <i>Covid-19 Health Coordinator</i>	Tel: +49 (0)171 - 5334756 E-Mail: info@millora.de

Due to the current dynamic course of the pandemic and considering the possibility of new scientific findings, all measures and regulations described/taken must be reevaluated regularly and adjusted, as necessary. Any significant changes to these measures will be communicated to the teams in a timely manner.




Regular contact and coordination with local authorities (e.g., health department) is imperative, as local infection rates may make it necessary to adapt measures.

HYGIENE CONCEPT, MEASURES AND PROCEDURES

Viessmann FIS Nordic Combined World Cup
SCHWARZWALDPOKAL Schonach 19.03. – 21.03.2021






5.1 Core – Hygiene Measures

<p>Mouth/Nose protection</p> 	<ul style="list-style-type: none">• Mouth/nose protection is mandatory on the event site.• It is <u>not</u> permitted to cover the nose and mouth with bandanas or scarves.• Mouth/nose protection must be worn at all times and for the duration of the event. <p>Exceptions:</p> <ol style="list-style-type: none">1. Mouth/nose <i>protection</i> may be briefly removed for drinking and/or eating. Note: The distance rule (1.5 m) must still be adhered to (see also <i>point 5.2.6. Catering</i>).2. Athletes may remove masks during the direct execution of their sport in the field of play. <p>Note: <i>Point 5.2.3. describes in detail which type of mouth/nose protection is mandated for which groups and -Safety Zones-!</i></p>
<p>Distance</p> 	<ul style="list-style-type: none">• A minimum distance of 1.5 meters must be observed.• Direct contact e.g., shaking hands, hugging, as well as unnecessary skin and body contact is to be avoided.• Gatherings of groups in enclosed spaces is to be limited.
<p>Follow coughing and sneezing etiquette</p> 	<ul style="list-style-type: none">• Sneeze or cough into the crook of your arm or a handkerchief, keep your distance from those around you.• Dispose of the tissue properly in a garbage can.

HYGIENE CONCEPT, MEASURES AND PROCEDURES

Viessmann FIS Nordic Combined World Cup
SCHWARZWALDPOKAL Schonach 19.03. – 21.03.2021



<p>Hand Hygiene</p> 	<ul style="list-style-type: none">• Wash hands regularly and thoroughly with soap and water.• Wash for at least 20-30 seconds• Avoid touching your mouth, nose, or eyes with your hands.
<p>Hand Disinfection</p> 	<ul style="list-style-type: none">• Disinfect hands with an appropriate hand sanitizer, before entering or leaving rooms and at all entrance points. <p><i>Note: Hand sanitizer dispensers will be provided throughout the entire event site (see point 5.2.5.)</i></p>
<p>Ventilation</p> 	<ul style="list-style-type: none">• Ventilate rooms/enclosed areas regularly and adequately.

HYGIENE CONCEPT, MEASURES AND PROCEDURES

Viessmann FIS Nordic Combined World Cup
SCHWARZWALDPOKAL Schonach 19.03. – 21.03.2021



5.2 Special Hygiene Measures and Procedures

Certain participants, helpers and staff are subject to additional measures above those listed in *point 5.1. Central Hygiene Measures*. These persons/groups must observe and adhere to these additional hygiene regulations/special measures.

Participant and working groups will be clearly defined, their special hygiene measure and procedure clearly listed and described below.

The event site is divided into **-Safety Zones-**. Entry into these zones is determined by the “Group” to which an individual is assigned.

For enclosed spaces, a “maximum occupancy” shall be defined and clearly posted.

Additional event procedures and measures are listed and defined in the following sections.

5.2.1 Accommodations

Hotels and other accommodations are to follow all national guidelines as well as those of the **Corona Ordinance of the State of Baden-Württemberg** (CoronaVO BaWü) and the **German Hotel and Restaurant Association** (DEHOGA Federal Association).

The applicable hygiene and protective measures must be implemented and adhered to by the hotels and accommodation providers. *For additional information contact the hotel or accommodation provider directly.*

The following FIS accommodation recommendations should be observed and adhered to (if possible):

Accommodations:

- *Team members accommodated on the same floor.*
- *Access to hotel facilities via stairway (to avoid elevators).*
- *Try to separate team members from other hotel guests.*
- *Rooms with 2 twin-beds rooms preferred, separate beds to maximize distance.*
- *If possible, provide a separate entry to hotel/accommodation.*
- *Additional cleaning/disinfection prior to arrival and during the stay.*

HYGIENE CONCEPT, MEASURES AND PROCEDURES

Viessmann FIS Nordic Combined World Cup
SCHWARZWALDPOKAL Schonach 19.03. – 21.03.2021



- *Additional hand sanitizers and paper towels throughout the accommodation, including the rooms.*
- *Avoid cleaning rooms when occupied by team members (to avoid unnecessary contact).*
- *Provide for a possible “isolation room”.*
- *Establish rules for the use of joint facilities (gym, meeting rooms).*

Meals:

- *Separate dining rooms/dining areas away from other hotel guests.*
- *Avoid unnecessary contact between staff and team members by preparing the dining areas before the arrival of team members.*
- *Place water/drinks on the tables prior to arrival of team members.*
- *Clean the table and remove dishes after an entire table has left, not during the meal.*

Origin: FIS Covid-19 Prevention Guidelines_Point 8. Accommodation & Meal Services

HYGIENE CONCEPT, MEASURES AND PROCEDURES

Viessmann FIS Nordic Combined World Cup
SCHWARZWALDPOKAL Schonach 19.03. – 21.03.2021



5.2.2 Groups and Safety Zones

Groups

Team

(athletes and support staff)

- Athletes
- Coaches
- Medical support staff
- Sports Directors
- Technical staff
- Press Officers

FIS / DSV

- FIS Functionaries
- DSV Functionaries
- Referees/Judges

Media

- Photographers
- Print-Media
- TV-Media
- Media Consultant (LOC)

Personnel

- Local Organizing Committee (LOC)
- Covid-19/Health Coordinator
- Swiss Timing

Volunteers/ Service Providers

- Ski-Jump Hill Team
- Track/Trail-Team
- Start Area Squad
- Hill Packers Squad
- Inrun Maintenance Squad
- Distance Measures
- Shuttlebus-Drivers
- Cleaning staff

Security

- Emergency Medical Staff
- Fire Brigade
- Police

HYGIENE CONCEPT, MEASURES AND PROCEDURES

Viessmann FIS Nordic Combined World Cup
SCHWARZWALDPOKAL Schonach 19.03. – 21.03.2021



The event site will be divided into **-Safety Zones-**. The **-Safety Zones-** are defined by a color system which is based on recommendations from the *Deutscher Skiverband e.V. (Guidelines for Infection Protection)*.

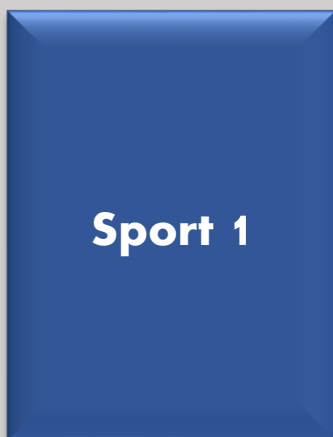
The **-Safety Zones-** are designed in such a way as to minimize unnecessary contact between groups.

All distance and hygiene rules as described in point 5.1. *Core Hygiene Measures* must be observed within the **-Safety Zones-**

Additionally, the information in point 5.2.3. *Event Specific Processes* shall be noted and implemented.

All **-Safety Zone-** entrances will have signs clearly indicating which groups are authorized to enter the area.

Safety Zones



Sport 1



Sport 2



Media



Mixed Zone



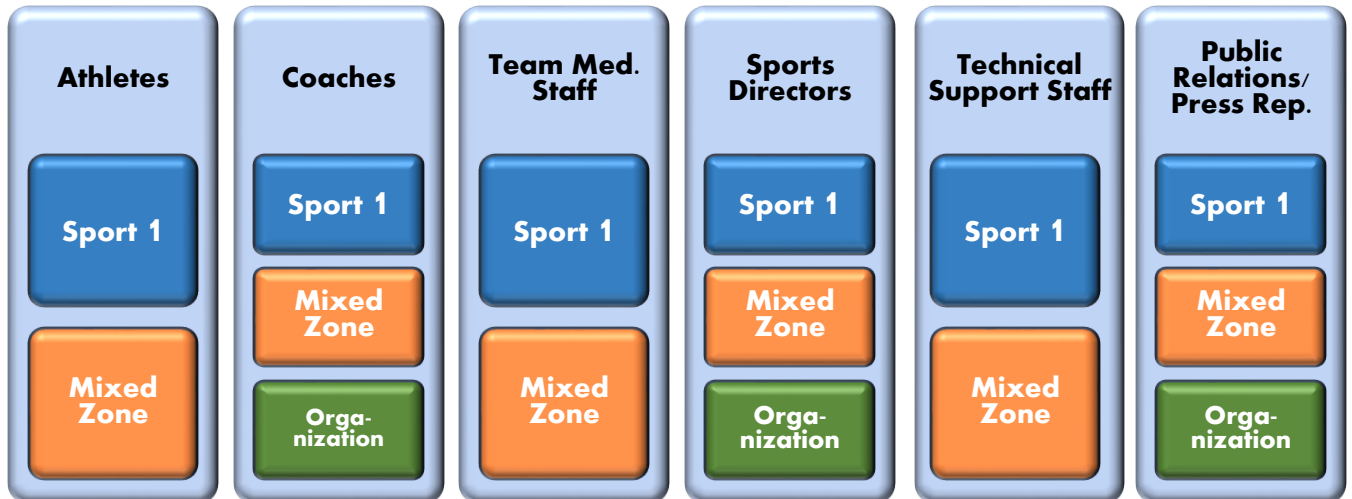
Organization

HYGIENE CONCEPT, MEASURES AND PROCEDURES

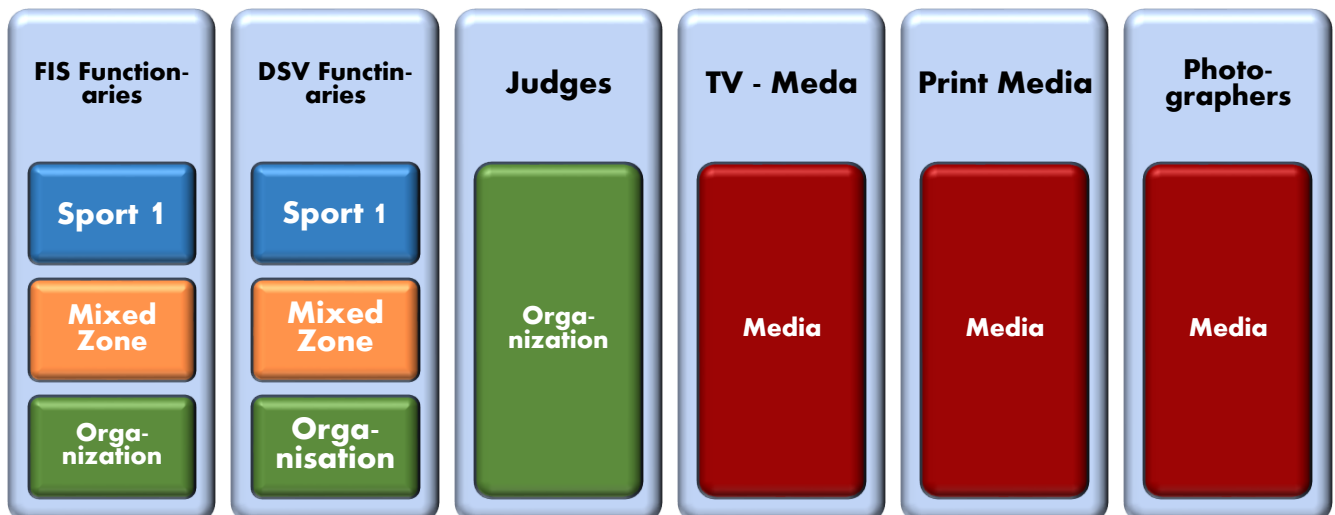
Viessmann FIS Nordic Combined World Cup
SCHWARZWALDPOKAL Schonach 19.03. – 21.03.2021



Team (Athletes and Support Staff)



FIS/ DSV/ Media

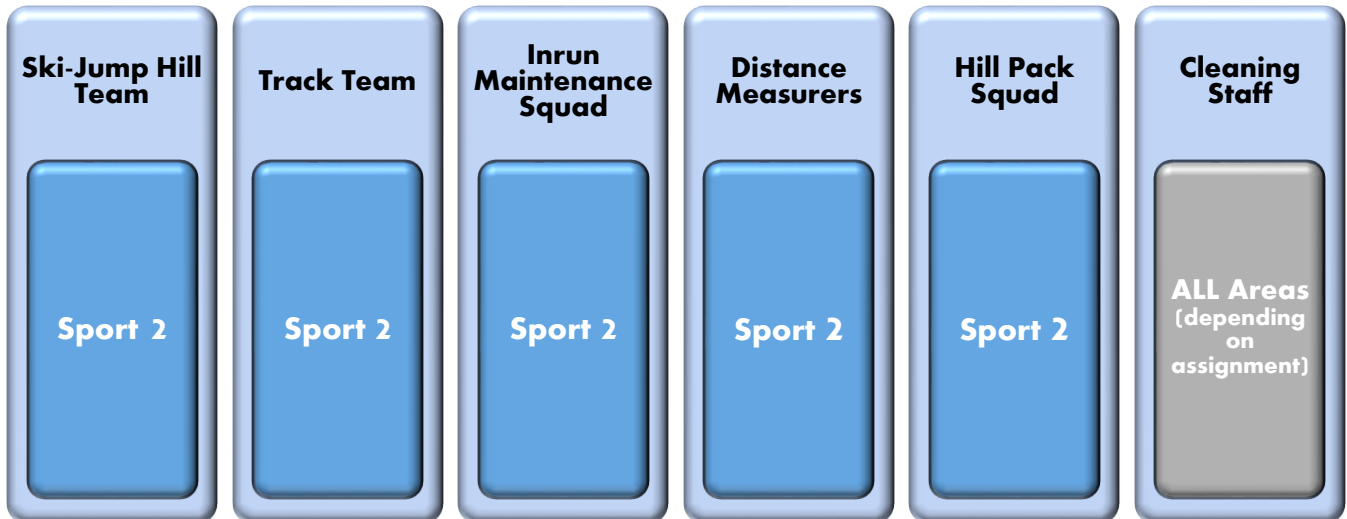


HYGIENE CONCEPT, MEASURES AND PROCEDURES

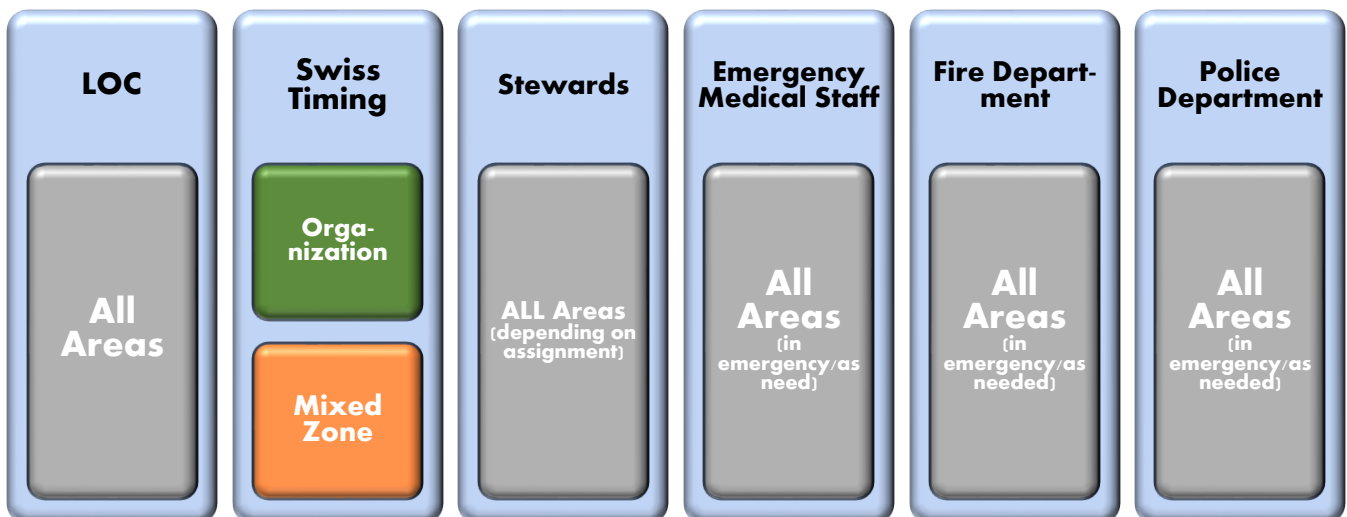
Viessmann FIS Nordic Combined World Cup
SCHWARZWALDPOKAL Schonach 19.03. – 21.03.2021



Staff/Volunteers/Service Providers

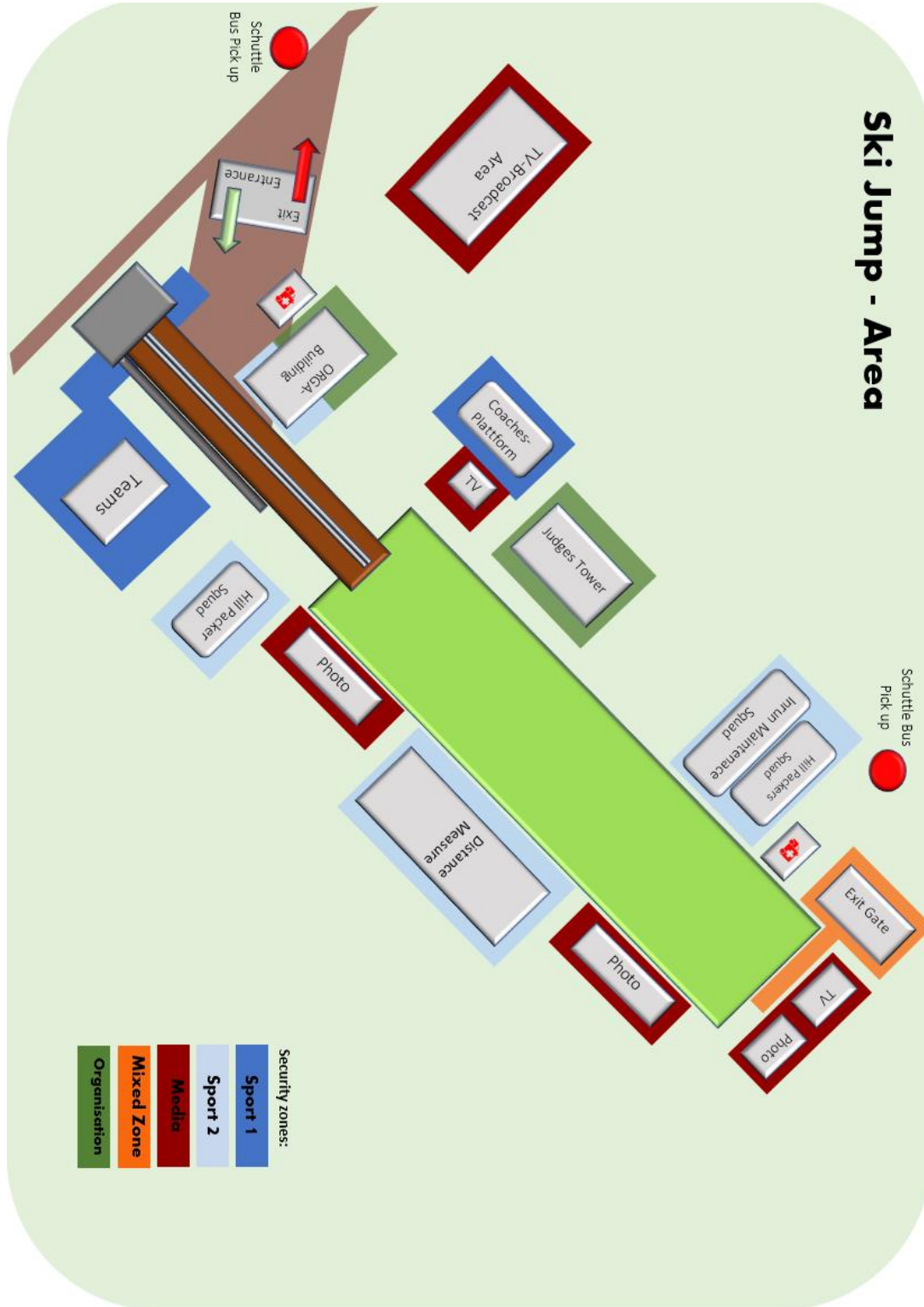


Personnel/Security



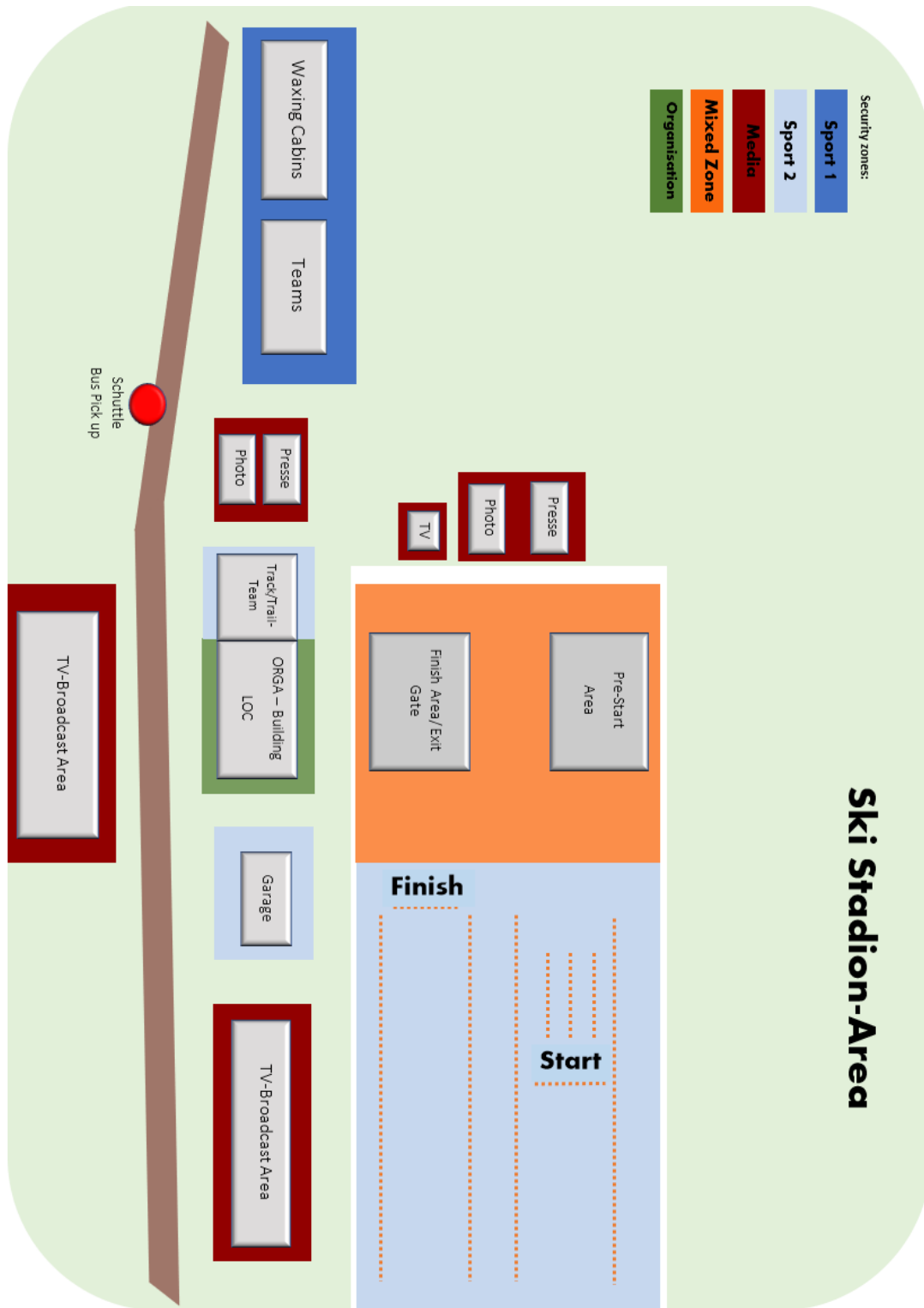
HYGIENE CONCEPT, MEASURES AND PROCEDURES

Viessmann FIS Nordic Combined World Cup
 SCHWARZWALDPOKAL Schonach 19.03. – 21.03.2021



HYGIENE CONCEPT, MEASURES AND PROCEDURES

Viessmann FIS Nordic Combined World Cup
 SCHWARZWALDPOKAL Schonach 19.03. – 21.03.2021



HYGIENE CONCEPT, MEASURES AND PROCEDURES

Viessmann FIS Nordic Combined World Cup
SCHWARZWALDPOKAL Schonach 19.03. – 21.03.2021



5.2.3 Specific Event Processes

The following describes the hygiene and process measures for the various event locations and event groups.

Ski Jump Ski Station Entrance/Exit Areas

- Separate entrance and exit areas will be created to minimize to contact between persons entering and/or exiting the event site.
- Entrance and exit will be clearly marked with signs and visible path markings.
- Event organizers will assign designated arrival time windows for specific groups (team/officials/staff/helpers) to avoid unnecessary contact between arriving groups.
- Appropriate, visible distance markers will be placed at the entrance area.
- Entrance Control:
 1. Access to the event site will be controlled by Event Staff.
 2. The event area may only be entered by persons with a valid accreditation. An accreditation pass must be presented to gain admission to the event site.
 3. Upon entering the event site, appropriate medical mouth/nose protection must be put on.
 4. After admission, each person must go directly to their designated "Group" area following the correct walking path markers. The walking path markers (*see point 5.2.5.*) must be followed appropriately.

HYGIENE CONCEPT, MEASURES AND PROCEDURES

Viessmann FIS Nordic Combined World Cup
SCHWARZWALDPOKAL Schonach 19.03. – 21.03.2021



Accreditation	<ul style="list-style-type: none">• Event accreditation badges will be issued prior to event begin. Groups (<i>see point 5.2.2</i>) will designate a representative to obtain accreditation badges for the entire group. Groups are responsible for distributing their badges among their members.• The accreditation office will be in the “Haus des Gastes”, Hauptstraße 6, D - 78136 Schonach. (<i>see point 5.2.4.</i>)
Start Number Issue	<ul style="list-style-type: none">• Start numbers will be given to an authorized person (trainer) of the respective athletic team. They will in turn distribute the start numbers to their athletes.• After use, start numbers will be collected and returned by the authorized team member in a closed bag.• Textiles start numbers that must be worn by different athletes throughout the event must be washed at 60 °C after each event.
Shuttle -Bus-Traffic	<ul style="list-style-type: none">• All passengers must wear appropriate mouth and nose protection.• Shuttle drivers must wear an FFP-2 mask (<i>without valve</i>) when transporting guests.• <u>Transport capacity:</u> Car: 1 passenger with Mouth/Nose protection 2 passengers with FFP-2 mask (<i>without valve</i>). Minibus: up to 4 passengers Mouth/Nose protection 6 passengers with FFP-2 masks (<i>without valve</i>) (<i>Formulation adopted: Guidelines Infektionsschutz Deutscher Skiverband e.V.</i>)• The front passenger seat may not be occupied.• After each transport, all contact surfaces (door handles/seats/armrests/etc.) will be disinfected with an appropriate surface disinfectant.• Vehicles will be adequately ventilated (doors open) between passenger transport.

HYGIENE CONCEPT, MEASURES AND PROCEDURES

Viessmann FIS Nordic Combined World Cup
SCHWARZWALDPOKAL Schonach 19.03. – 21.03.2021



Start Area Ski Jump	<ul style="list-style-type: none">• Athletes may remove masks after leaving the material checkpoint.• Appropriate 1.5m distances must be observed. Distance markers and information signs will be clearly posted.• If the 1.5m distance rule cannot be maintained around an unmasked athlete, staff, volunteers, and other event participants will be required to wear FFP-2 <i>without valve</i> (e.g., Start Command).• Personnel performing the pre-jump equipment check must wear an FFP-2 mask (<i>without valve</i>) and gloves.
Ski Jump Landing Area	<ul style="list-style-type: none">• Only the athlete and a designated TV Media Representative may be in the ski-jump landing area.• The TV media representative must ensure that the minimum distance 1.5m is always maintained. <p><u>Exeptions:</u></p> <ol style="list-style-type: none">1. In the event of an accident or a medical emergency, the Emergency Medical Staff and/or the athlete's medical support staff may enter the ski-jump landing area.2. To prepare the landing zone, the step command/technical staff may enter the ski-jump landing area, if they remain in compliance with the 1.5m distance regulation.
Exit Gate (Mixed Zone)	<ul style="list-style-type: none">• After completing the jump and entering the Exit Gate Area the athlete must wear medical mouth/nose protection.• Personnel performing the post-jump equipment check must wear an FFP-2 mask (<i>without valve</i>) and gloves.
Interview-Area (Mixed Zone)	<ul style="list-style-type: none">• The interview area will be constructed such that athletes and media representatives maintain 1.5m distance.• Recognizable separations and markings between the media representatives and the athletes (public relations representative/press officer) will be installed and posted.• Areas for athletes and media representatives will be clearly marked and posted. <p>Note: For TV media representatives, the rules, and regulations of the concept Regulations for Broadcaster & Media apply.</p>

HYGIENE CONCEPT, MEASURES AND PROCEDURES

Viessmann FIS Nordic Combined World Cup
SCHWARZWALDPOKAL Schonach 19.03. – 21.03.2021



Press Conference	<ul style="list-style-type: none">All press conferences will take place using a virtual format. <p><u>Note:</u></p> <p>Further information with respect to press conference details will be provided in a timely manner.</p> <p><u>Additional Information: FIS Covid-19 Media Guidelines</u></p>
Presentation Ceremony	<ul style="list-style-type: none">Awards ceremony will take place in the finish area of the Cross Country arena.The winners' podium will be designed in such a way that the minimum distance (1.5 m) between the athletes is maintained.The prize handover will take place with gloves on a tablet or pillow.The ceremony will be kept as short as possible.Cheering gestures, hugs, handshakes are to be avoided.

5.2.4 Room Descriptions and Room Capacities

In the following section room purpose, and maximum capacities will be defined. Rooms will be clearly marked with necessary information (access authorization, max. occupancy etc.).

Hand sanitation dispensers will be provided at each room entrance. Every room (as far as possible) must be ventilated for 5 minutes every 25 minutes via open windows/doors.

HYGIENE CONCEPT, MEASURES AND PROCEDURES

Viessmann FIS Nordic Combined World Cup
SCHWARZWALDPOKAL Schonach 19.03. – 21.03.2021



Ski Jump - Area

<p>Athlete's Changing area</p> <p>Waxing Cabins</p>	<ul style="list-style-type: none">• Only members of the same sports team will be allowed in the lounge area at any given time.• All persons in the room must wear an FFP-2 mask (<i>without valve</i>)• Signs will clearly indicate which team may use the room. <p><u>Note:</u></p> <ul style="list-style-type: none">• Waxing and changing cabins must be handed over clean and disinfected.• No cleaning is to take place during the event.• Teams are responsible for a daily cleaning of their cabin.• Waste disposal options are prepared by the LOC. <p><u>Origin:</u> FIS Covid-19 Prevention Guidelines_Nordic Combined Field of Play</p>
<p>Referee Tower</p>	<ul style="list-style-type: none">• An FFP-2 mask (<i>without valve</i>) must be worn.• Rooms in the referee tower will be provided with signs on door entrance clearly indicating who (name or company) may enter the room and the max.• Restrooms will be cleaned, and hand contact surfaces disinfected every 60 minutes.• All common areas, break areas and offices will be cleaned and the hand contact surfaces disinfected after completion of the day's events.• Cleaning and disinfection of this area is to be documented.
<p>Trainer Plattform (Outdoor Area)</p>	<ul style="list-style-type: none">• While a trainer is on the platform, the minimum distance (1.5 m) must be observed.• An FFP-2 mask (<i>without valve</i>) must be worn.
<p>Break Room Ski-Jump Hill Team</p>	<ul style="list-style-type: none">• Minimum distance (1.5 m) must be observed.• Break times and length of stay must be planned and coordinated in advance by the Ski-Jump Hill Team.• Stay should be kept as short as possible.• To ensure proper air quality, the level of CO2 may not exceed 800 ppm. A measuring device will be placed in the room to monitor air quality. Once this level has been reached the room must be adequately ventilated.

HYGIENE CONCEPT, MEASURES AND PROCEDURES

Viessmann FIS Nordic Combined World Cup
SCHWARZWALDPOKAL Schonach 19.03. – 21.03.2021



	<ul style="list-style-type: none">• Restrooms in the Ski-Jump Hill Team Area may only be used by members of the team.• Restrooms are to be cleaned and hand contact surface areas disinfected every 60 minutes.• Cleaning and disinfection of the area is to be documented.
Ski Stadion - Area	
ORGA – Building Loipenhaus	<ul style="list-style-type: none">• An FFP-2 mask (<i>without valve</i>) must be worn in the building.• All rooms in the ORGA Building will be clearly marked with entrance requirements (who may enter) and maximum occupancy.• Restrooms will be cleaned, and hand contact surfaces disinfected every 60 minutes.• All common areas, break areas and offices will be cleaned and the hand contact surfaces disinfected after completion of the day's events. Cleaning and disinfection of this area is to be documented <p>Note:</p> <ul style="list-style-type: none">• The catering area for the track and arena helpers will be located in the ORGA Building. <i>For additional information please see Point 5.2.6 Catering.</i>
Athlete's Changing area Waxing Cabins	<ul style="list-style-type: none">• Only members of the same sports team will be allowed in the lounge area at any given time.• All persons in the room must wear an FFP-2 mask (<i>without valve</i>)• Signs will clearly indicate which team may use the room. <p>Note:</p> <ul style="list-style-type: none">• Waxing and changing cabins must be handed over clean and disinfected.• No cleaning is to take place during the event.• Teams are responsible for a daily cleaning of their cabin.• Waste disposal options are prepared by the LOC. <p>Origin: FIS Covid-19 Prevention Guidelines_Nordic Combined Field of Play</p>

HYGIENE CONCEPT, MEASURES AND PROCEDURES

Viessmann FIS Nordic Combined World Cup
SCHWARZWALDPOKAL Schonach 19.03. – 21.03.2021



Main ORGA-Building

„Haus des Gastes“

Organisation Office:

- Everyone working in or entering the ORGA Building must wear an FFP 2 Mask.
- Once seated at the designated work area the mask may be removed.

The organization office is an important point of contact for many event participants. It serves as an information and communication hub as well as coordination center of the event.

The following measures must be taken to prevent large groups of people from gathering at, in or near the ORGA office:

1. Each “Group” must designate in advance a contact person charged with direct communication and contact with the ORGA office.
2. Person to person contact shall be limited to necessary interactions. Communication will primarily take place via telephone or radio.
3. Time spent in the ORGA office for visitors must be kept as short as possible.
4. Avoid unnecessary questions and conversations.
5. 1.5m distance markers will be placed in the area in front of the ORGA office.

Media Room:

- FFP-2 masks (*without valve*) must be worn.
- Once seated at the designated work area the mask may be removed.
- Maximum occupancy 25 Media representatives. Additionally, up to 7 volunteers/helpers/support staff may enter the room.
- To ensure proper air quality, the level of CO2 may not exceed 800 ppm. A measuring device will be placed in the room to monitor air quality. Once this level has been reached the room must be adequately ventilated.
- Hand sanitizers will be positioned at entrances and exits.

HYGIENE CONCEPT, MEASURES AND PROCEDURES

Viessmann FIS Nordic Combined World Cup
SCHWARZWALDPOKAL Schonach 19.03. – 21.03.2021



- Work areas will be arranged to provide a safe minimum distance (1.5m), alternatively physical dividers will be installed.
- Walking routes will be clearly marked to avoid cross traffic upon entering and exiting the room.

Accreditation Office:

- Advanced notification of accreditation office opening times will be given by the LOC.
- *Central Hygiene Measures (point 5.1.)* apply to the accreditation office.
 1. Hand sanitizer dispensers will be provided at entrance and exit.
 2. Distance markings (1.5 m) will be clearly visible.
 3. The staff is to be separated from visitors by a partition.
 4. Staff will wear an FFP-2 mask (*without valve*)
 5. Persons to be accredited must wear medical mouth/nose protection.

Catering:

- The following specific Catering Areas will be:
 1. Catering LOC
 2. Catering Shuttle-Bus Drivers
 3. Catering Press-/ Media Representatives
- These areas will be physically separated from one another to minimize contact between groups.
For additional information see point 5.2.6. Catering

HYGIENE CONCEPT, MEASURES AND PROCEDURES

Viessmann FIS Nordic Combined World Cup
SCHWARZWALDPOKAL Schonach 19.03. – 21.03.2021



Isolation Area	<ul style="list-style-type: none">• A special room will be made available onsite to isolate people with a positive PCR test or a suspicion of infection.• If a person shows symptoms of Covid-19 (<i>see point 3.1.2.</i>), they will be immediately isolated.• In the event that isolation becomes necessary, the hygiene officer will coordinate/communicate with the local health department and determine the next course of action. <p>Note: Appropriate measures and communication process will be further described in point 6.1. <i>ff. Communication.</i></p> <ul style="list-style-type: none">• In the event it becomes necessary to isolate an infected or a suspected infected person, special hygiene/protection and disinfection measures will be implemented. <p>Note: Special measures for the isolation area are described further in point 5.3. <i>Cleaning/Disinfection.</i></p>
-----------------------	--

5.2.5 Signage, Directional Markers	
Signage	<ul style="list-style-type: none">• German and English signage will be supplemented by clearly understandable pictograms.• Hygiene rules will be clearly posted at the main entrance, at security zone transitions and in front of buildings.• Special <i>-Safety Zone-/room</i> use regulations will be clearly posted at entrances to these areas.
Directional Markers	<ul style="list-style-type: none">• Walking paths will be arranged and marked such as to minimize contact between “Groups”.• When possible, walking paths will be “one-way”.• At path intersections staff will be deployed to assist with “traffic control”.• Walking paths will be clearly marked with signs and ground markings.• Ground marking will be checked daily and renewed as needed. In case of inclement weather ground marking will be checked more frequently.

HYGIENE CONCEPT, MEASURES AND PROCEDURES

Viessmann FIS Nordic Combined World Cup
SCHWARZWALDPOKAL Schonach 19.03. – 21.03.2021



5.2.6 Catering

Caterers must adhere to and implement current DEHOGA rules and regulations.

- Catering areas will have “Take away” counters for food and drink.
- Time spent in the catering “Take away” area is limited to the time necessary to pick up food and drink.
- Distance markings (1.5 m) will be clearly visible.
- The catering staff will wear FFP-2 masks (*without valve*) and gloves.
- Physical barriers will separate catering staff from event staff and participants.

Catering Area Access:

Catering „Haus des Gastes“	<ol style="list-style-type: none">1. Catering LOC2. Catering Shuttle-Bus Drivers3. Catering Press-/ Media Representatives
Catering Ski Jump - Area	<ol style="list-style-type: none">1. Catering Athletes/Support Staff2. Catering Hill Team
Catering Ski Stadium - Area	<ol style="list-style-type: none">1. Catering Track Team
Catering Media Pavillion - Ski Stadium	<ol style="list-style-type: none">1. Catering Press, Photographers

5.3 Cleaning/Disinfection

5.3.1 Restrooms/Toilets/WC

Restrooms/Toilets/WC's will be cleaned and disinfected by qualified cleaning staff.

- Hygiene rules and maximum occupancy will be clearly posted at each entrance.
- Every other sink and urinal will be blocked to ensure the 1.5m distance can be maintained.

HYGIENE CONCEPT, MEASURES AND PROCEDURES

Viessmann FIS Nordic Combined World Cup
SCHWARZWALDPOKAL Schonach 19.03. – 21.03.2021



- Restrooms will be cleaned, and hand contact surfaces disinfected every 60 minutes.
- Cleaning and disinfection of this area is to be documented.
- The contracted cleaning service provider will provide must an independent hygiene concept for cleaning/staff processes.
- Cleaning staff will wear FFP-2 masks (*without valve*)

5.3.2. Organizational and Lounge Areas

All rooms utilized during the event will be cleaned daily. Room cleaning will be carried out after the day's events have been completed and participants have left the areas. All hand contact surfaces will be disinfected with an appropriate surface disinfectant. Cleaning and disinfection of these areas is to be documented.

Note: A cleaning plan/schedule will be provided by the cleaning service provider and attached to the service provider's hygiene concept.

Isolation Room

- If the isolation room is used by an infected individual (or one with a strong suspicion of infection), the following additional points must be observed:
 1. The room may only be entered with protective clothing. FFP-2 mask (*without valve*), protective goggles, protective suit, gloves.
 2. The room will be adequately ventilated (open doors and windows).
 3. Disinfection and cleaning will be carried out by qualified personnel only. All contact surfaces, storage areas, floors and sanitary areas are to be disinfected with an appropriate surface disinfectant.
 4. All disinfection and cleaning measures will be monitored and checked by Covid-19 Health Coordinator.
 5. The isolation room may only be released for further use with the approval of the Covid-19 Health Coordinator.

HYGIENE CONCEPT, MEASURES AND PROCEDURES

Viessmann FIS Nordic Combined World Cup
SCHWARZWALDPOKAL Schonach 19.03. – 21.03.2021



6 Communication

6.1 What to do in the event of an infection or suspected infection SARS-CoV-2

In the event of infection or in case of a strong suspicion of an infection, the appropriate reporting structure must be activated, and special measures taken.

Possible scenarios and the measures that are to be taken are described below.

An athlete reports symptom suspicious for infection
(outside the event site)

- Athlete is to be isolated immediately (all contact avoided).
- Interaction with appropriately protected (FFP-2 mask *without valve*, protective suit, gloves) medical staff is allowed.
- The Covid-19 health coordinator must be notified immediately. The COVID-19 Health Coordinator in turn will inform the appropriate Health Department.
- The athlete must identify all athletes, sports team members, event staff, volunteers, organizers etc. they have been in contact with.
- Further procedures, evaluations (including PCR tests) will be performed in accordance with the Covid-19 Health Coordinator/Health Department instructions.

Formulation adopted:

Hygiene standards; General regulations of the German Olympic Sports Confederation

Staff/ Volunteer reports symptoms suspicious for infection
(outside the event site)

- The Covid-19 health coordinator must be notified immediately.
- The staff member/volunteer must identify all athletes, sports team members, event staff, volunteers, organizers etc. they have been in contact with.
- Further procedures, evaluations (including PCR tests) will be performed in accordance with the Covid-19 Health Coordinator/Health Department.

Formulation adopted:

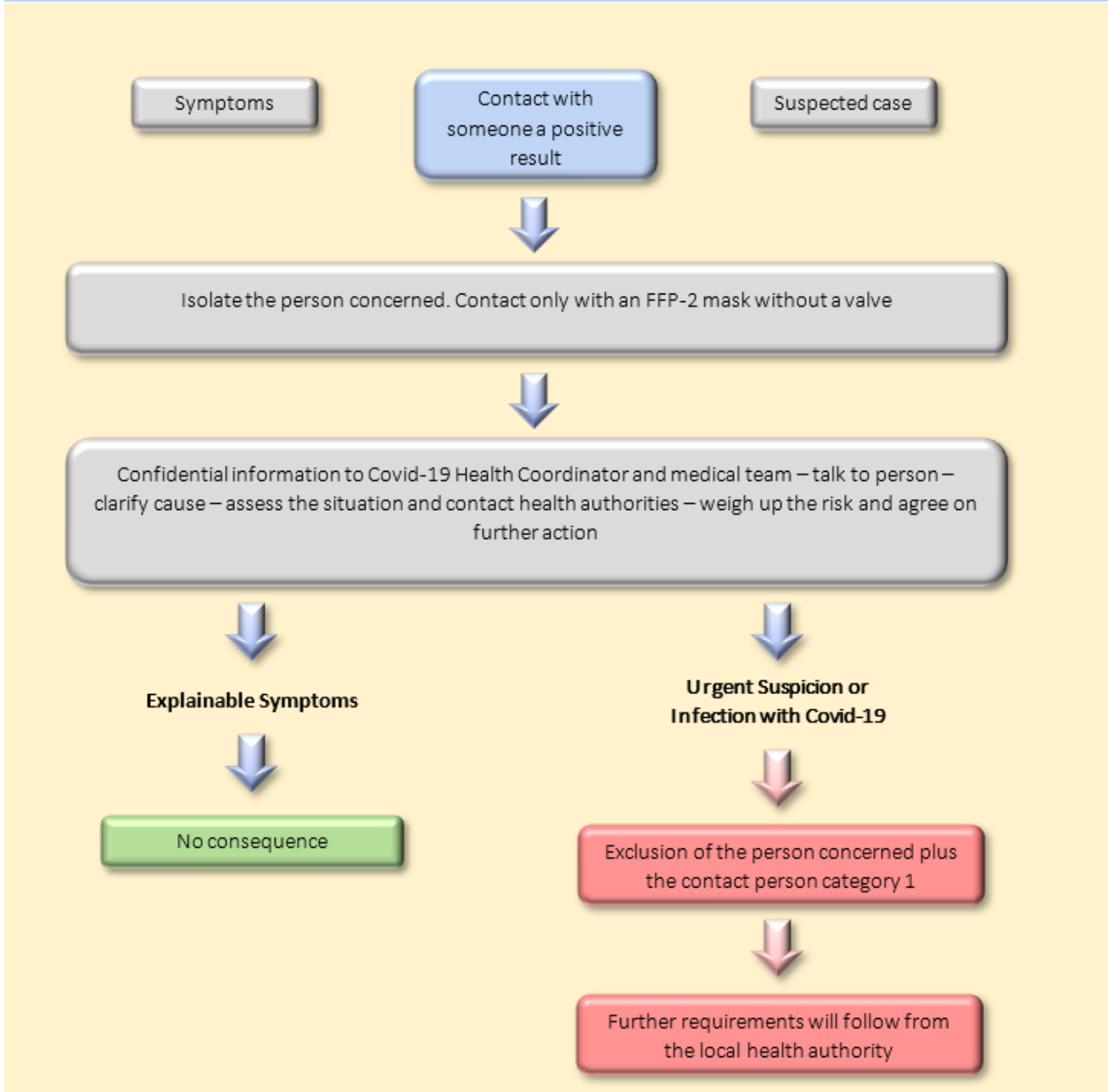
Hygiene standards; General regulations of the German Olympic Sports Confederation

HYGIENE CONCEPT, MEASURES AND PROCEDURES

Viessmann FIS Nordic Combined World Cup
SCHWARZWALDPOKAL Schonach 19.03. – 21.03.2021



Please refer to the following graphic in case of a positive PCR test or suspected infection.
Infographic based on the guidelines for protection against infection of the German Ski Association e.V.



HYGIENE CONCEPT, MEASURES AND PROCEDURES

Viessmann FIS Nordic Combined World Cup
SCHWARZWALDPOKAL Schonach 19.03. – 21.03.2021



6.2 Communication process in case of suspected infection/infection with SARS-CoV-2

In the event of a suspected case/infection with SARS-CoV-2, the person concerned or the person responsible must inform the local Covid-19 Health Coordinator as soon as possible. (*For contact details see point 2.2.*) The Covid-19 Health Coordinator will coordinate further measures.

- All information is to be treated confidentially at every level of the communication process in accordance with German data protection regulations! There is to be no release of confidential data (to any institution, person, person group or media representative) without the prior approval of the appropriate authorities. -

The Covid-19 health Coordinator will immediately contact:

1. *Local Health Authority/Department*
2. *Responsible FIS representative*
3. *Responsible Local Organization Committee representative*
4. *Responsible representative of the impacted team or "Group" as defined in point 5.2.2. Groups and Safety Zones.*

External communication, for e.g., to the media is to take place exclusively through authorized press representatives. Coordination with and prior approval from the FIS and the impacted team(s) or "Person-Groups" concerned is essential before releasing any information.

The Covid-19 Health Coordinator will communicate regularly with those impacted by the situation regarding any and all decisions made by the local health authorities.

The Covid-19 Health Coordinator, in conjunction with the *local health authority*, the *FIS* and the *Local Organizing Committee*, will decide about the further course of the event.

7 Appendices

Appendix 1_Hygiene rules_ Nordic Combined Worldcup_Schonach

HYGIENE- UND SICHERHEITSGESAMTREGELN

HYGIENE- AND SAFETY RULES

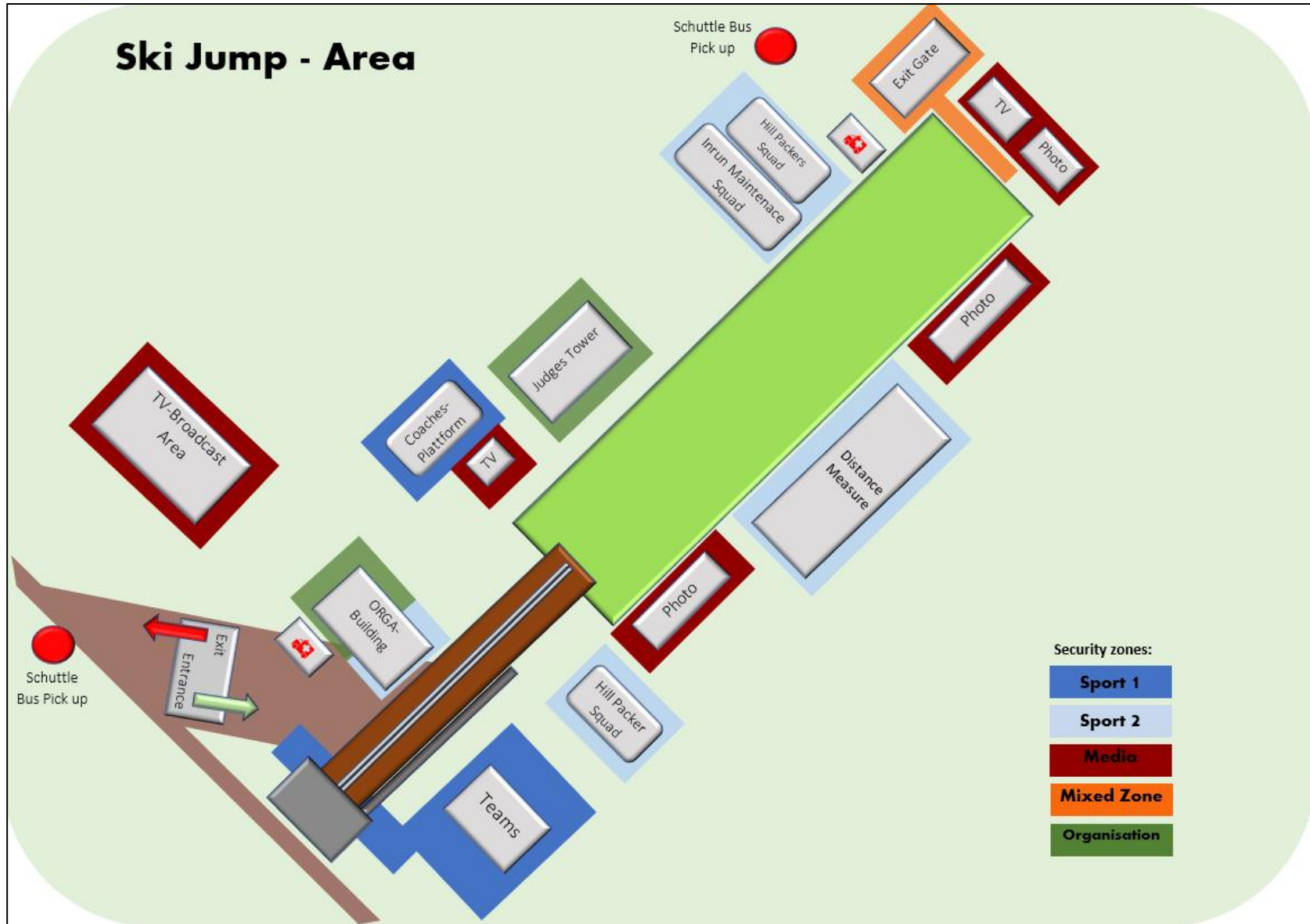
FIS WELTCUP NORDISCHE KOMBINATION
SCHWARZWALDPOKAL
Schonach



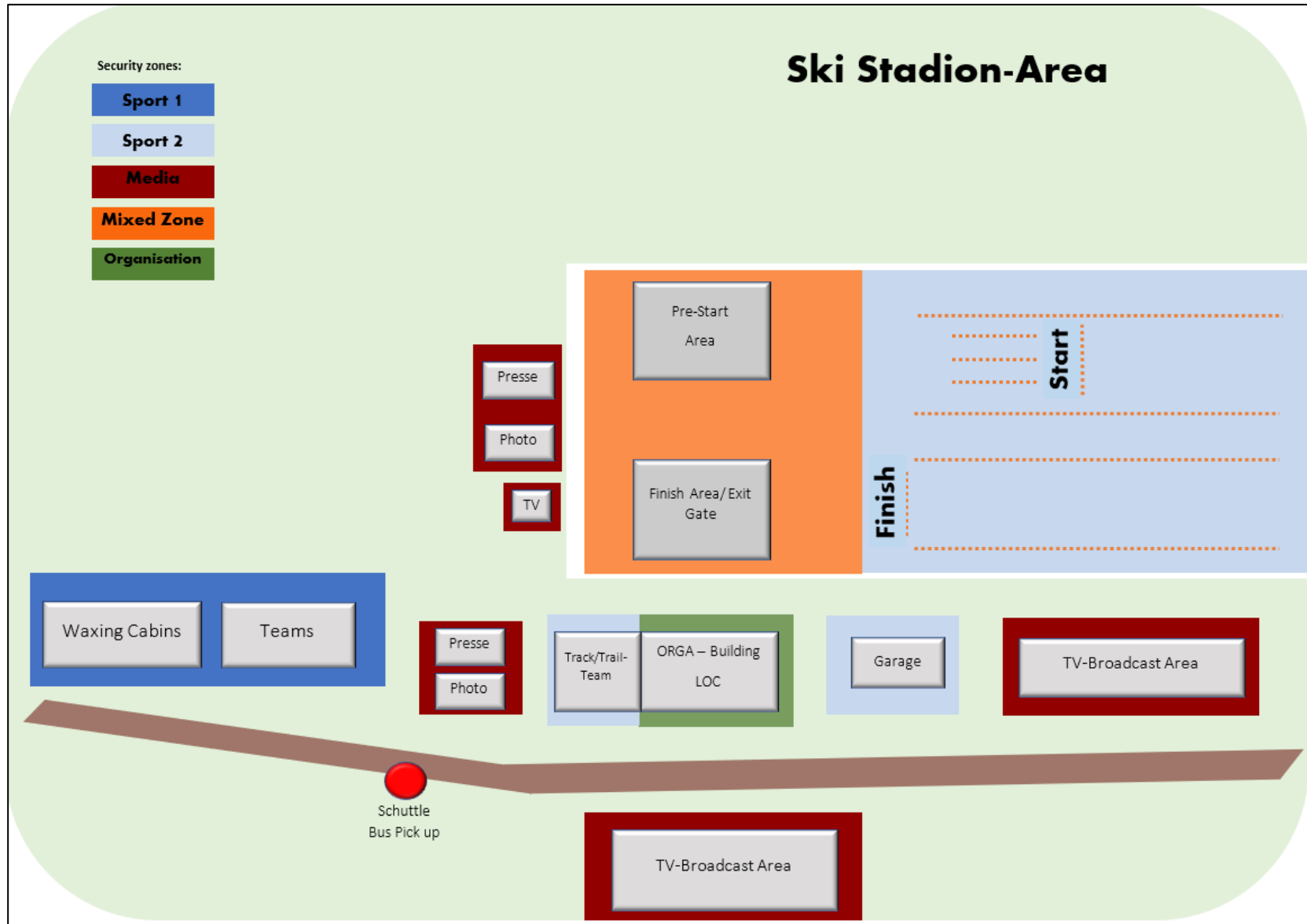
	MUND/ NASENSCHUTZ TRAGEN <i>WEAR MOUTH/ NOSE PROTECTION</i>		HÄNDE AUSREICHEND (20 – 30 SEC.) MIT SEIFE WASCHEN <i>WASH HANDS THOROUGHLY WITH SOAP AND WATER</i>		BEI KRANKHEITSSYMPTOMEN ZU HAUSE BLEIBEN <i>IN CASE OF COVID-19 SYMPTOMS STAY AT HOME</i>
	ABSTAND EINHALTEN <i>MAINTAIN YOUR DISTANCE</i>		HÄNDE AN EIN- UND AUSGÄNGEN DESINFIZIEREN <i>DISINFECT HANDS AT ALL ENTRANCE AND EXITS</i>		BITTE HANDELN SIE VERANTWORTLICH UND BEACHTEN SIE DIE HINWEISE <i>PLEASE ACT RESPONSIBLY AND OBSERVE THE HYGIENE RULES</i>
	HUSTEN- UND NIESETIKETTE BEACHTEN <i>OBSERVE ETIQUETTE WHEN SNEEZING AND COUGHING</i>		RÄUME REGELMÄßIG LÜFTEN <i>VENTILATE ROOMS REGULARY</i>		

 ©2020 Millora Consulting GmbH -Alle Rechte vorbehalten-

Appendix 2_Location Map_Ski Jump Area_Nordic Combined World Cup_Schonach



Appendix 3_Location Map_Ski Stadium_Nordic Combined World Cup_Schonach



Appendix 4_Access Authorization Zones_Nordic Combined World Cup_Schonach

