

Welcome to Crans-Montana



AUDI FIS COUPE DU MONDE 2022
SKI ALPIN DAMES – 26-27 FÉVRIER

CRANS MONTANA 
Absolutely

SCHEDULE

- **Wednesday, February 16th** (official date of arrival)
7.30 – 21.00
19.00
Race Office
Team Captains' Meeting
Congress Centre Le Régent
Congress Centre Le Régent
- **Thursday, February 17th**
7.30 – 20.00
10.00 (tbc)
17.00
Race Office
1st Downhill Training
Team Captains' Meeting
Congress Centre Le Régent
Mont Lachaux slope
Congress Centre Le Régent
- **Friday, February 18th**
7.30 – 20.00
10.00 (tbc)
17.00
Race Office
2nd Downhill Training
Team Captains' Meeting
Congress Centre Le Régent
Mont Lachaux slope
Congress Centre Le Régent



SCHEDULE

- **Saturday, February 19th**

7.30 – 20.00

10.00

Afterwards

17.00

Race Office

Downhill #1

Prize giving ceremony

1-5 + best U18

Team Captains' Meeting

Congress Centre Le Régent

Mont Lachaux slope

Finish Area

Congress Centre Le Régent

- **Sunday, February 20th**

7.30 – 20.00

10.00 (tbc)

Afterwards

(official date of departure)

Race Office

Downhill #2

Prize giving ceremony

1-5 + best U18

Congress Centre Le Régent

Mont Lachaux slope

Finish Area



COVID-19 PROTECTION PLAN

PROTECTION PLAN

In cooperation with the local and national authorities as well as with Swiss-Ski and the International Ski Federation FIS, a protection concept for the implementation of the ski races in Crans-Montana was developed.

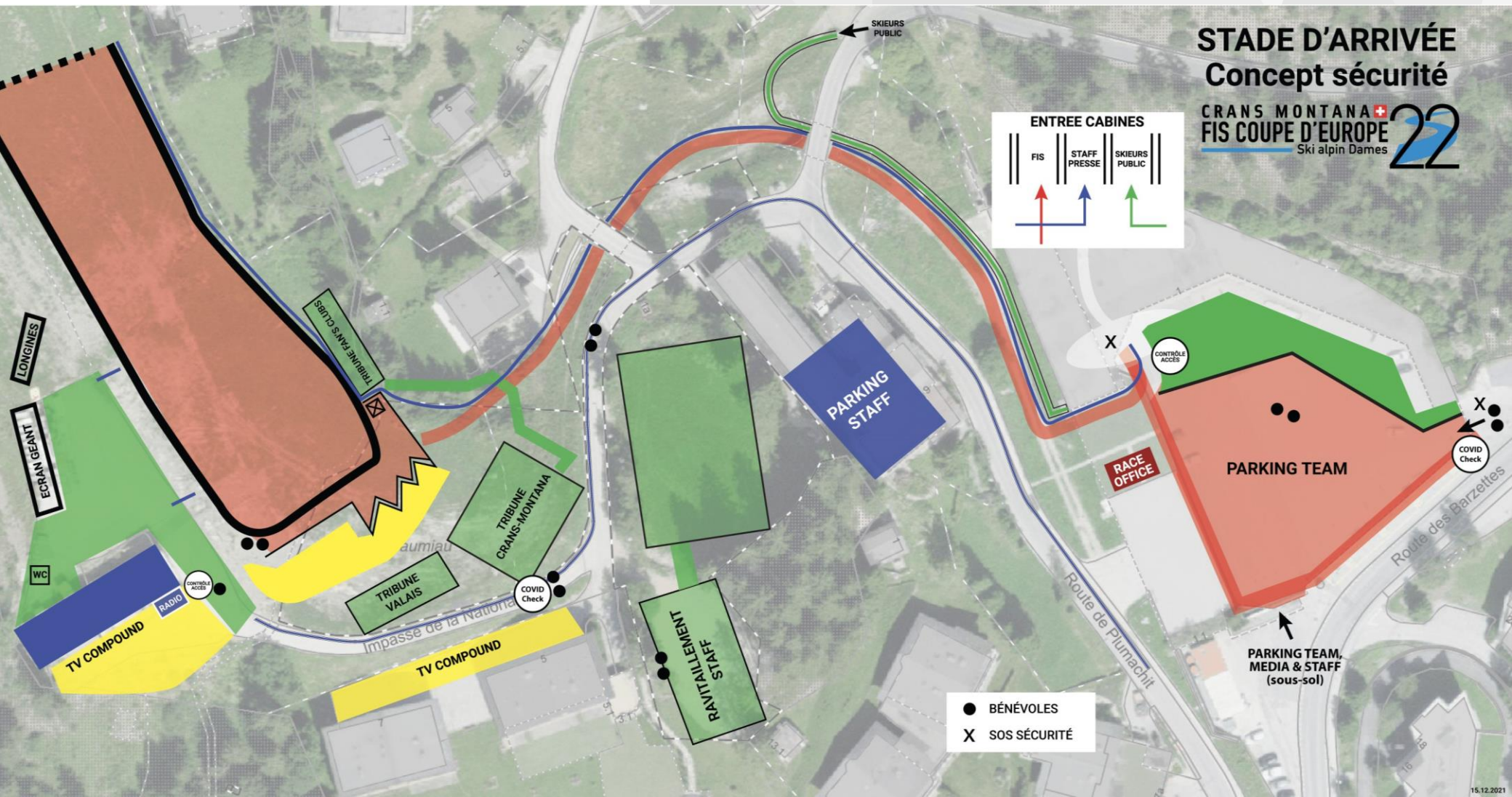
The protection concept is the base for all activities onsite and affects the entire event. We ask you to read the protection concept in detail and to adhere to it strictly.

We wish your team successful competitions!



COVID-19 PROTECTION PLAN

FINISH AREA MAP



COVID-19 PROTECTION PLAN

BASIC MEASURES

- **Protective masks**
A general mask requirement applies to the entire event area (accommodation, lifts, restaurant, skiroom, ...).
- **Hand Hygiene**
In private as during the event, a good hand hygiene is of outmost importance. Wash your hands regularly, disinfect them before and after you put on / take off your mask.
- **Keep your distance**
If possible, keep a distance of 1.5 meters or more. Social distancing is even more important indoors and while eating / drinking.



COVID-19 PROTECTION PLAN

REQUIREMENTS FOR SWITZERLAND & SKI EUROPEAN CUP CRANS-MONTANA

- **Mandatory!** All team members (incl. all athletes, coaches, service men,...) must be in possession of a **valid COVID Certificate** at the time of the Ski European Cup Crans-Montana. In addition, everyone in the « RED » colour group must undergo a COVID-19 test before arriving to Crans-Montana and must present a **negative PCR test result in order to receive the accreditation. The test should be carried out no more than 48 hours prior to arrival.**
- **Form for people entering Switzerland:**
Everyone entering Switzerland must fill in this [entry form](#). The entry form can be completed at the earliest **48h before entry**.
- **Online check for people travelling to Switzerland:**
The [Travelcheck](#) allows you to check what requirements apply to enter Switzerland.
- It is mandatory to contact the COVID-19 coordinator in case of symptoms or a positive COVID-19 Test occurring within 14 days after the event.



COVID-19 PROTECTION PLAN

COVID-19 TESTING

- **The OC organizes PCR tests for registered teams:**
 - In the Congress Centre Le Régent (next to the Race Office)
 - From Tuesday, February 15th, to Sunday, February 20th;
 - From 6.00 – 9.00 and 15.30 – 18.00
 - Test results and official QR Code guaranteed within 12 hours;
 - CHF 100.- / test;
 - Costs shall be borne by those being tested (invoice after the races).
- **If you are interested**, please send the following information to Sophie (org@skiwc-cransmontana.ch) **before February 10th**:
 - Name and surname of the tested persons;
 - Gender;
 - Birthday;
 - Email address;
 - Phone number;
 - Type of test (PCR nasopharyngeal or PCR saliva).



COVID-19 PROTECTION PLAN

ACCREDITATION

The conditions for the accreditation of the « RED » colour group are the following:

- Complete all information in the FIS Passport database at least 12 hours before collecting accreditation, i.e. negative COVID-19 PCR test result including date of acceptance and laboratory certificate AND FIS health questionnaires.
- Without an official negative laboratory PCR test result (max 48 hours) - no accreditation. The applicant won't have access to the event site and will have to go into self-isolation until the documents have been completed.
- Please **always wear your red armband**. It serves as a pass for the priority / safe lane and as a ski pass.
- The accreditation centre is located at the Congress Centre Le Régent. The location has signed entrances and exits; all visitors must wear masks.



COVID-19 PROTECTION PLAN

RETURN TO COMPETITION AFTER AN INFECTION

- **Scenario 1:** Athletes and coaches are allowed to return to competition 8 days after a positive result and a negative PCR test prior to the event.
- **Scenario 2:** Athletes and coaches must **request an exemption** 8 days after a positive result and a positive PCR test prior to the event (**exemption form**).

PERSONS WITHOUT VACCINATION

- Persons without vaccination will need to show a **negative PCR Test every 48 hours, or a negative Rapid Antigenic Test every 24 hours.**
- **Appointment per Email (org@skiwc-cransmontana.ch) before February 10th.**
- Self-Testing is not accepted.



COVID-19 PROTECTION PLAN

PROCESS IF THERE IS A POSITIVE CASE WITHIN A TEAM – approved by the State of Valais

- 1) Isolation of the athlete that is positive (min 5 days or 48 hours after the last symptoms);
- 2) Testing of all team members;
- 3) Negative tested team members may continue to participate;
- 4) Re-testing of the entire team 5 days after the onset of symptoms in the team;
- 5) Rapid tests can be used. In case of a positive rapid test, a confirmatory PCR test should be performed.



COVID-19 PROTECTION PLAN

COVID-19 COORDINATOR:

The Organizing Committee has appointed a COVID-19 coordinator, whose responsibilities are as follows:

- To act as an interface to the cantonal/federal government;
- To serve as the point of contact for all teams;
- To manage contact tracing and implementation of the framework conditions;
- To support the teams from their arrival at the competition site.

Contact details of the COVID-19 coordinator:

Sophie Genoud

org@skiwc-cransmontana.ch

+41 79 712 11 34



RACE OFFICE

The Race Office is located at the Congress Centre Le Régent (Route des Mélèzes 28, 3963 Crans-Montana).

- Follow the « Bureau des courses » signs and/or use the following Google Maps [link](#). Wearing a mask and respecting the distances is mandatory.

- **Opening hours:**

15.02: 7.30 – 20.00

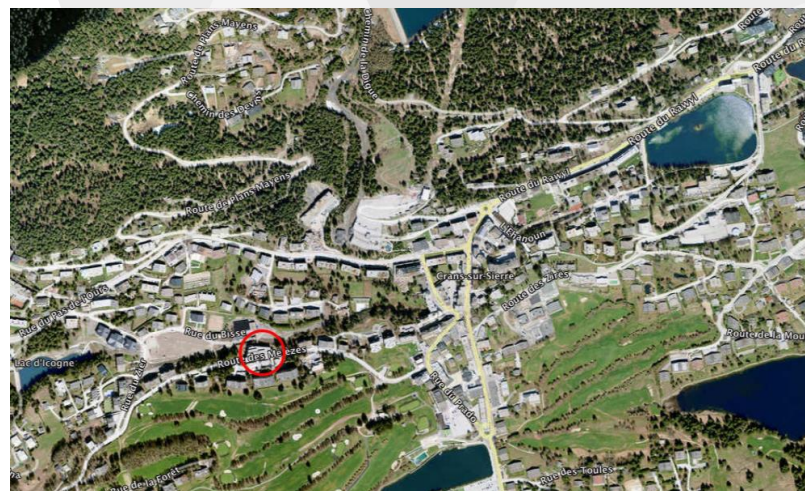
16.02: 7.30 – 20.00

17.02: 7.30 – 20.00

18.02: 7.30 – 20.00

19.02: 7.30 – 20.00

20.02: 7.30 – 14.00



- The Race Office on the Parking Violettes (container) is open everyday, from 6.30 to 15.00.



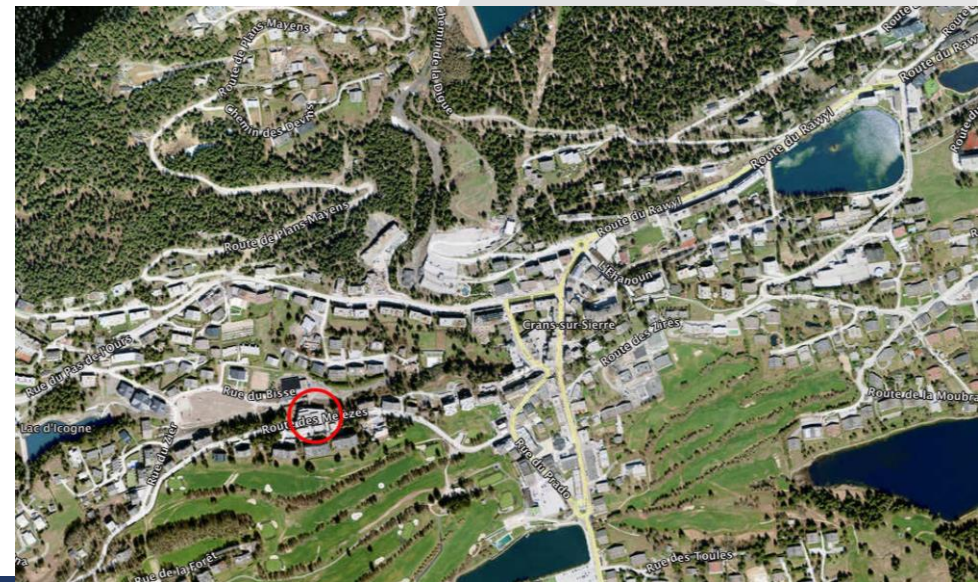
TEAM CAPTAINS' MEETING

- On Wednesday, February 16th, at 19.00;
- On Thursday, February 17th, at 17.00;
- On Friday, February 18th, at 17.00;
- On Saturday, February 19th, at 17.00.
- Please follow the signs « Bureau des courses » and/or use the following Google Maps [link](#).

- **Participants:**

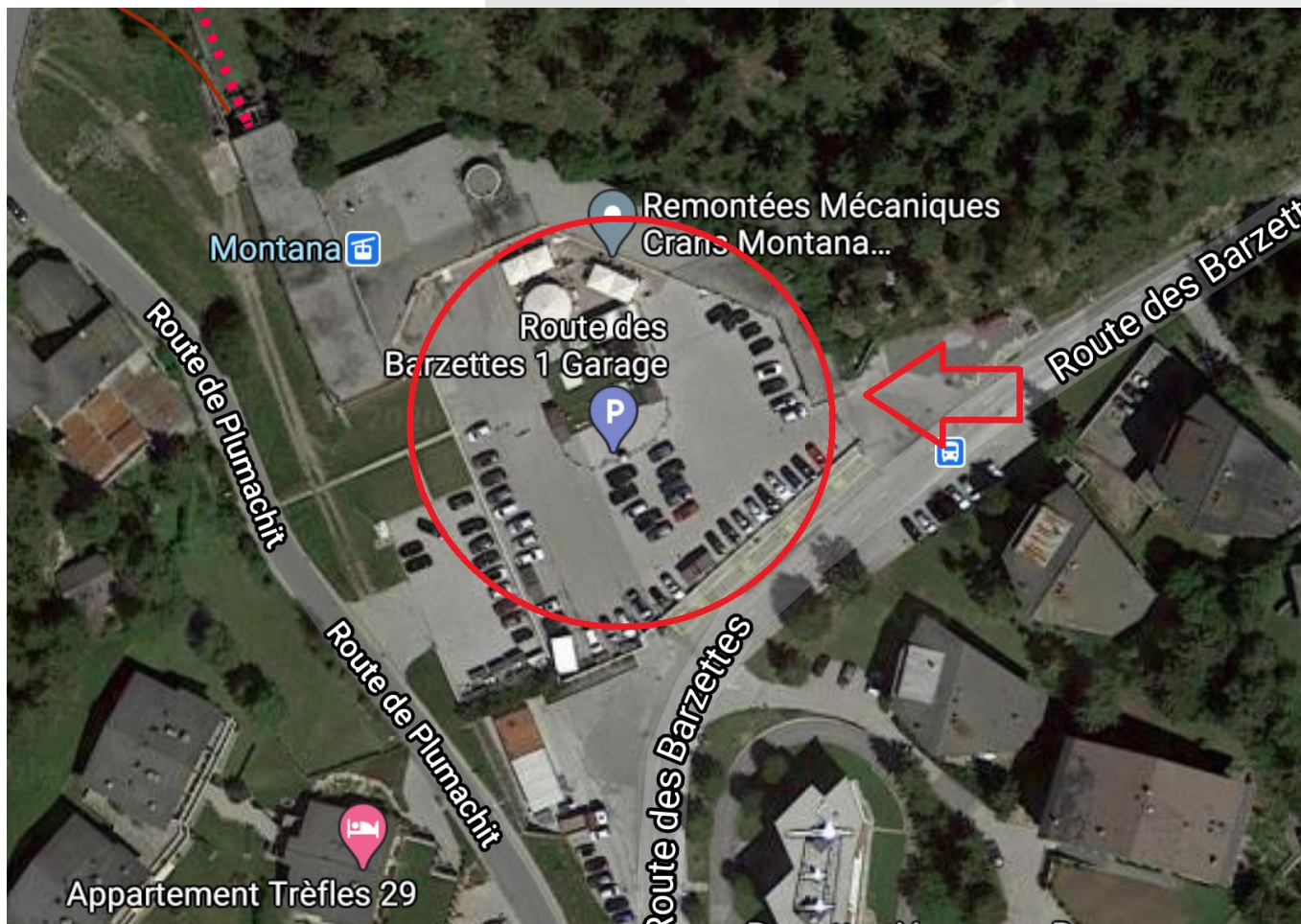
- FIS & TD
- Teams: 1 person per nation
- LOC: 2 persons
- Race Office: 1 person
- Timing: 1 person
- Media: 1 person

- **Wearing a mask and respecting the distances is mandatory.**



PARKING

Each team will receive a **few badges** for the **outdoor parking**, please put it on the front windshield.



ACCOMMODATION

- The room bookings for each team are made **according to the final entry list**. A person featured on the entry list and not staying at the hotel is considered as a « **no-show** » and will be charged **CHF 90.- per night**.
- We kindly ask you to let your hotel know if there is a **late check-out**.
- In case of **an early departure** of any member of staff or staff from an external company, the Team Captain is paying the remaining nights.
- Allocation of **single rooms** per team must be made according to the following table:
 - 1 to 4 competitors = 1 single room
 - 5 to 10 competitors = 2 single rooms
 - More than 11 competitors = 3 single rooms
- The number of single rooms allocated to each team is set by the FIS rules (art. EC 7.4.4). **For any extra single room, an additional cost of CHF 40.- / night per extra single room** will be charged. These additional costs have to be paid by the team.
- **Wearing a mask and respecting the distances in the whole hotel is mandatory!**



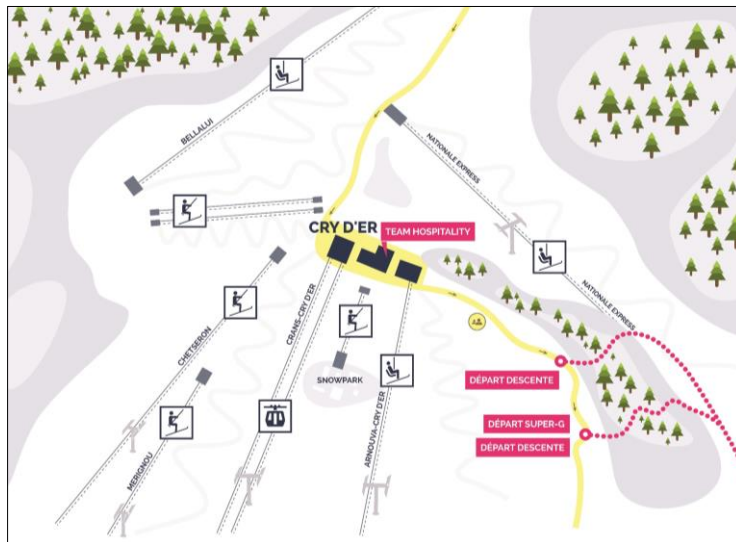
MEALS

- **Lunch** will be taken everyday at your hotel.
- Upon arrival, please **communicate to your hotel, your needs** regarding the meals.
- We kindly ask you to let your hotel know every morning the number of people that are having lunch and/or dinner at the hotel.
- **Wearing a mask and respecting the distances in the whole restaurant is mandatory!**



TEAM HOSPITALITY

- The **Team Hospitality** is located at the Cry d'Er Restaurant.
- The number of seats is limited. More information at the TCM.
- Follow the «Team Hospitality» signs.
- **Wearing a mask and respecting the distances in the whole Team Hospitality is mandatory!**



WINNER CEREMONY AND PRESS CONFERENCE

WINNER CEREMONY

- The award ceremonies are held exclusively in the **finish area**. The participants are limited to the 5 top athletes, the best U18 and one representative from the FIS and from the LOC.

Wearing a mask and respecting the distances is mandatory.



WARM-UP COURSE & INDOOR FACILITIES

WARM-UP COURSE

- **Mid-station of the « Nationale » slope.**
- You must have your skis on to take the chairlift « Nationale ».

INDOOR SPORT FACILITIES

- Crans-Montana has a few sport facilities available for indoor training.
- **Booking at the Race Office.**



CONTACT

**Organizing Committee &
COVID-19 &
Race Office &
Prize Money**

Accommodation

Accreditation

Head of Media

Organisation des courses de ski alpin

Sophie Genoud

P.O. Box 84

CH-3963 Crans-Montana 1

org@skiwc-cransmontana.ch

+41 79 712 11 34

Pierre-Henri Mainetti

pierre-henri.mainetti@crans-montana.ch

+41 79 673 69 25

Alexandra Duchemin

accreditation@skiwc-cransmontana.ch

+41 77 474 16 86

Hugo Steinegger

media.sport@bluewin.ch

+41 79 300 30 60



WEBSITE & SOCIAL MEDIA

Website

<https://www.skicm-cransmontana.ch/en/>

Facebook

AUDI FIS Ski World Cup Crans-Montana or [link](#)

Instagram

worldcupcransmontana
#skiworldcupcransmontana



AUDI FIS COUPE DU MONDE 2022
SKI ALPIN DAMES – 26-27 FÉVRIER

CRANS MONTANA 
Absolutely



**We are looking forward to welcoming you here
and wish you a safe trip to Crans-Montana!**



AUDI FIS COUPE DU MONDE 2022
SKI ALPIN DAMES – 26-27 FÉVRIER

CRANS MONTANA 
Absolutely