

# Welcome to Crans-Montana



AUDI FIS COUPE DU MONDE 2022  
SKI ALPIN DAMES – 26-27 FÉVRIER

CRANS MONTANA   
*Absolutely*

# SCHEDULE

- **Tuesday, February 22<sup>nd</sup>**  
8.00 – 20.00  
12.00  
(official date of arrival)  
Race Office  
Opening Wax Room  
(24-hour surveillance)  
Congress Centre Le Régent  
Maison Général Guisan
- **Wednesday, February 23<sup>rd</sup>**  
7.30 – 20.00  
17.00  
Race Office  
**Team Captains' Meeting**  
Congress Centre Le Régent  
**Congress Centre Le Régent**
- **Thursday, February 24<sup>th</sup>**  
7.30 – 20.00  
10.30 (tbc)  
17.00  
Race Office  
**1<sup>st</sup> Downhill Training**  
Team Captains' Meeting  
Congress Centre Le Régent  
**Mont Lachaux slope**  
Congress Centre Le Régent
- **Friday, February 25<sup>th</sup>**  
7.30 – 20.00  
10.30 (tbc)  
17.00  
Race Office  
**2<sup>nd</sup> Downhill Training**  
Team Captains' Meeting  
Congress Centre Le Régent  
**Mont Lachaux slope**  
Congress Centre Le Régent



# SCHEDULE

- **Saturday, February 26<sup>th</sup>**

7.30 – 20.00

**10.30**

Afterwards

17.00

Race Office

**Downhill #1**

Prize giving ceremony (3)

Team Captains' Meeting

Congress Centre Le Régent

**Mont Lachaux slope**

Finish Area

Congress Centre Le Régent

- **Sunday, February 27<sup>th</sup>**

7.30 – 20.00

**10.00**

Afterwards

15.00

(official date of departure)

Race Office

**Downhill #2**

Prize giving ceremony (3)

Closing wax room

Congress Centre Le Régent

**Mont Lachaux slope**

Finish Area

Maison Général Guisan





# COVID-19 PROTECTION PLAN

## PROTECTION PLAN

In cooperation with the local and national authorities as well as with Swiss-Ski and the International Ski Federation FIS, a protection concept for the implementation of the ski races in Crans-Montana was developed.

**The protection concept is the base for all activities onsite and affects the entire event. We ask you to read the protection concept in detail and to adhere to it strictly.**

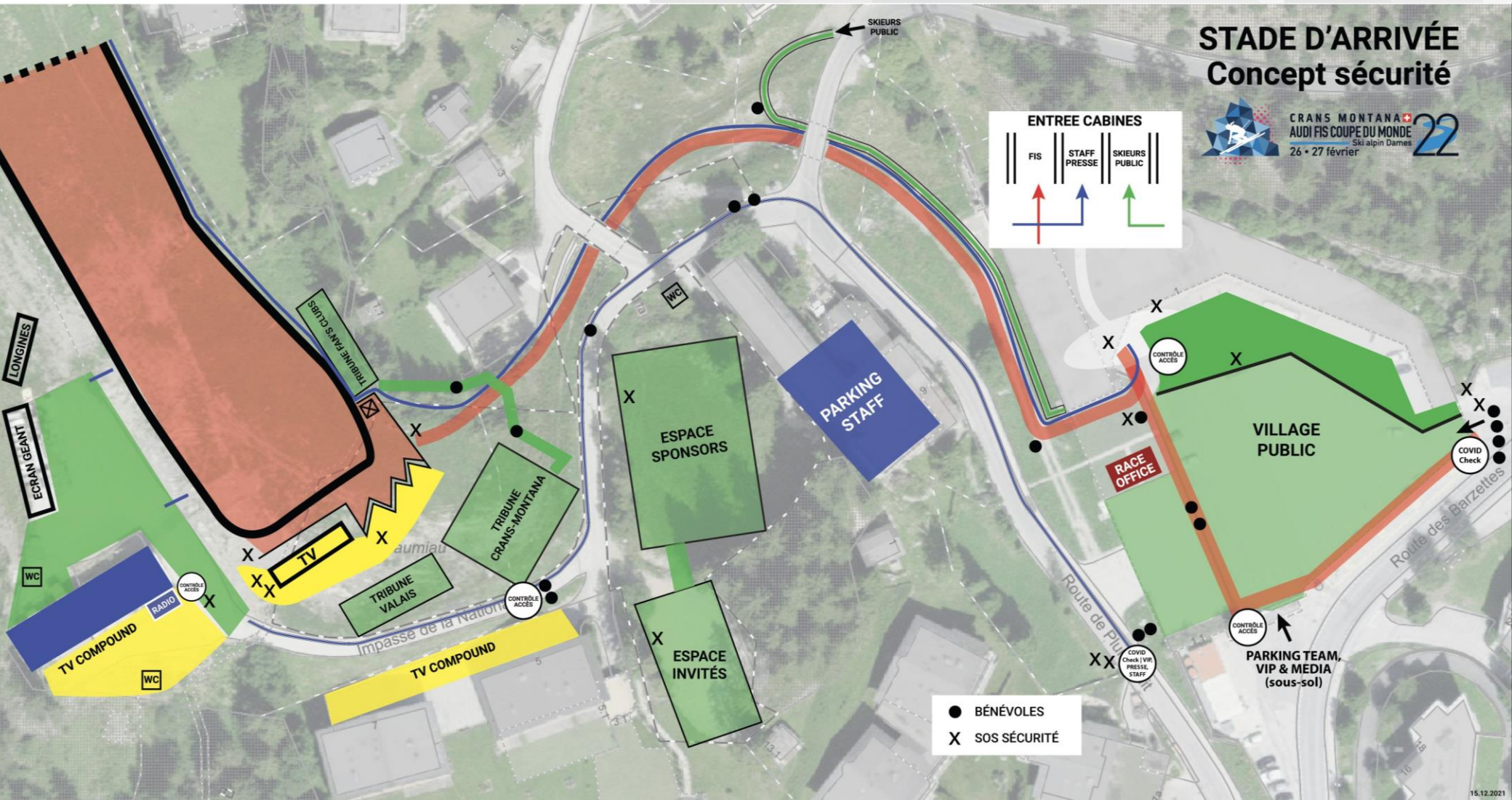
We wish your team successful competitions!



AUDI FIS COUPE DU MONDE 2022  
SKI ALPIN DAMES – 26-27 FÉVRIER

CRANS MONTANA   
*Absolutely*

## FINISH AREA MAP



# COVID-19 PROTECTION PLAN

## BASIC MEASURES

- **Protective masks**  
A general mask requirement applies to the entire event area (accommodation, lifts, restaurant, skiroom, ...).
- **Hand Hygiene**  
In private as during the event, a good hand hygiene is of outmost importance. Wash your hands regularly, disinfect them before and after you put on / take off your mask.
- **Keep your distance**  
If possible, keep a distance of 1.5 meters or more. Social distancing is even more important indoors and while eating / drinking.





# COVID-19 PROTECTION PLAN

## REQUIREMENTS FOR SWITZERLAND & SKI WORLD CUP CRANS-MONTANA

- **Mandatory!** All team members (incl. all athletes, coaches, service men,...) must be in possession of a **valid COVID Certificate** at the time of the Ski World Cup Crans-Montana. In addition, everyone in the « RED » colour group must undergo a COVID-19 test before arriving to Crans-Montana and must present a **negative PCR test result in order to receive the accreditation. The test should be carried out no more than 48 hours prior to arrival.**
- **Form for people entering Switzerland:**  
Everyone entering Switzerland must fill in this [entry form](#). The entry form can be completed at the earliest **48h before entry**.
- **Online check for people travelling to Switzerland:**  
The [Travelcheck](#) allows you to check what requirements apply to enter Switzerland.
- It is mandatory to contact the COVID-19 coordinator in case of symptoms or a positive COVID-19 Test occurring within 14 days after the event.



# COVID-19 PROTECTION PLAN

## COVID-19 TESTING

- **The OC organizes PCR tests for registered teams:**
  - In the Congress Centre Le Régent (next to the Race Office)
  - From Tuesday, February 22<sup>nd</sup>, to Sunday, February 27<sup>th</sup>;
  - From 6.00 – 9.00 and 15.30 – 18.00
  - Test results and official QR Code guaranteed within 12 hours;
  - CHF 100.- / test;
  - Costs shall be borne by those being tested (invoice after the races).
- **If you are interested**, please send the following information to Sophie ([org@skiwc-cransmontana.ch](mailto:org@skiwc-cransmontana.ch)) **before February 15<sup>th</sup>**:
  - Name and surname of the tested persons;
  - Gender;
  - Birthday;
  - Email address;
  - Phone number;
  - Type of test (PCR nasopharyngeal or PCR saliva).





# COVID-19 PROTECTION PLAN

## ACCREDITATION

The conditions for the accreditation of the « RED » colour group are the following:

- Complete all information in the FIS Passport database at least 12 hours before collecting accreditation, i.e. negative COVID-19 PCR test result including date of acceptance and laboratory certificate AND FIS health questionnaires.
- Without an official negative laboratory PCR test result (max 48 hours) - no accreditation. The applicant won't have access to the event site and will have to go into self-isolation until the documents have been completed.
- Please **always wear your red armband**. It serves as a pass for the priority / safe lane and as a ski pass.
- The accreditation centre is located at the Congress Centre Le Régent. The location has signed entrances and exits; all visitors must wear masks.



# COVID-19 PROTECTION PLAN

## RETURN TO COMPETITION AFTER AN INFECTION

- **Scenario 1:** Athletes and coaches are allowed to return to competition 8 days after a positive result and a negative PCR test prior to the event.
- **Scenario 2:** Athletes and coaches must **request an exemption** 8 days after a positive result and a positive PCR test prior to the event (**exemption form**).

## PERSONS WITHOUT VACCINATION

- Persons without vaccination will need to show a **negative PCR Test every 48 hours, or a negative Rapid Antigenic Test every 24 hours.**
- **Appointment per Email** ([org@skiwc-cransmontana.ch](mailto:org@skiwc-cransmontana.ch)) **before February 15<sup>th</sup>.**
- Self-Testing is not accepted.



# COVID-19 PROTECTION PLAN

## PROCESS IF THERE IS A POSITIVE CASE WITHIN A TEAM – approved by the State of Valais

- 1) Isolation of the athlete that is positive (min 5 days or 48 hours after the last symptoms);
- 2) Testing of all team members;
- 3) Negative tested team members may continue to participate;
- 4) Re-testing of the entire team 5 days after the onset of symptoms in the team;
- 5) Rapid tests can be used. In case of a positive rapid test, a confirmatory PCR test should be performed.





# COVID-19 PROTECTION PLAN

## COVID-19 COORDINATOR:

The Organizing Committee has appointed a COVID-19 coordinator, whose responsibilities are as follows:

- To act as an interface to the cantonal/federal government;
- To serve as the point of contact for all teams;
- To manage contact tracing and implementation of the framework conditions;
- To support the teams from their arrival at the competition site.

## Contact details of the COVID-19 coordinator:

Sophie Genoud

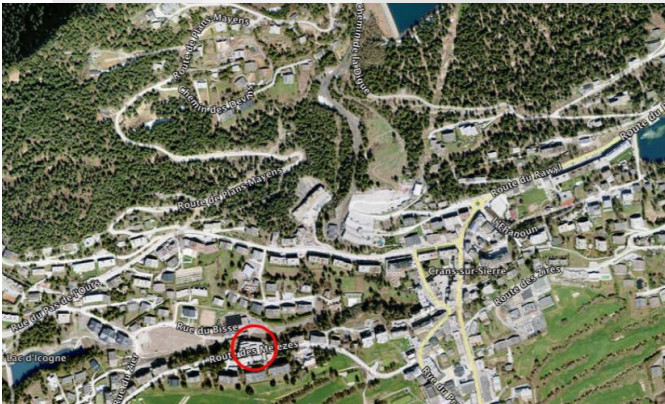
[org@skiwc-cransmontana.ch](mailto:org@skiwc-cransmontana.ch)

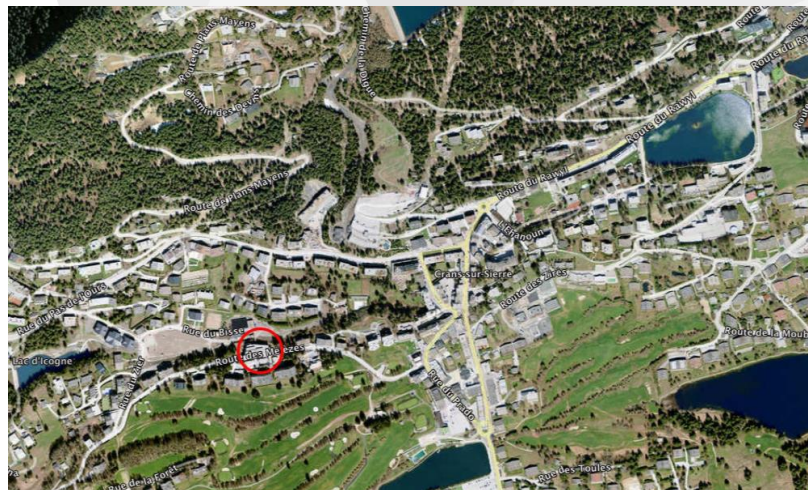
+41 79 712 11 34



# RACE OFFICE

**The Race Office is located at the Congress Centre Le Régent (Route des Mélèzes 28, 3963 Crans-Montana).**

- Follow the « Bureau des courses » signs and/or use the following Google Maps [link](#). Wearing a mask and respecting the distances is mandatory.
  - Opening hours:**  
21.02: 12.00 – 20.00  
22.02: 8.00 – 20.00  
23.02: 7.30 – 20.00  
24.02: 7.30 – 20.00  
25.02: 7.30 – 20.00  
26.02: 7.30 – 20.00  
27.02: 7.30 – 20.00
- 
- An aerial photograph of a village, likely in the French Alps, showing a mix of residential buildings, green fields, and forested hills. A red circle is drawn on the ground, highlighting a specific location in the lower central part of the image. The village is nestled in a valley, with roads and paths visible throughout the area.



- The Race Office on the Parking Violettes (container) is open everyday, from 6.30 to 15.00.



AUDI FIS COUPE DU MONDE 2022  
SKI ALPIN DAMES – 26-27 FÉVRIER

**CRANS MONTANA**   
*Absolutely*

# TEAM CAPTAINS' MEETING

- On Wednesday, February 23<sup>rd</sup>, at 17.00;
- On Thursday, February 24<sup>th</sup>, at 17.00;
- On Friday, February 25<sup>th</sup>, at 17.00;
- On Saturday, February 26<sup>th</sup>, at 17.00.
- Please follow the signs « Bureau des courses » and/or use the following Google Maps [link](#).

- **Participants:**
  - FIS & TD
  - Teams: 1 person per nation
  - LOC: 2 persons
  - Race Office: 1 person
  - Timing: 1 person
  - Media & Host Broadcaster: 1 person
- **Wearing a mask and respecting the distances is mandatory.**



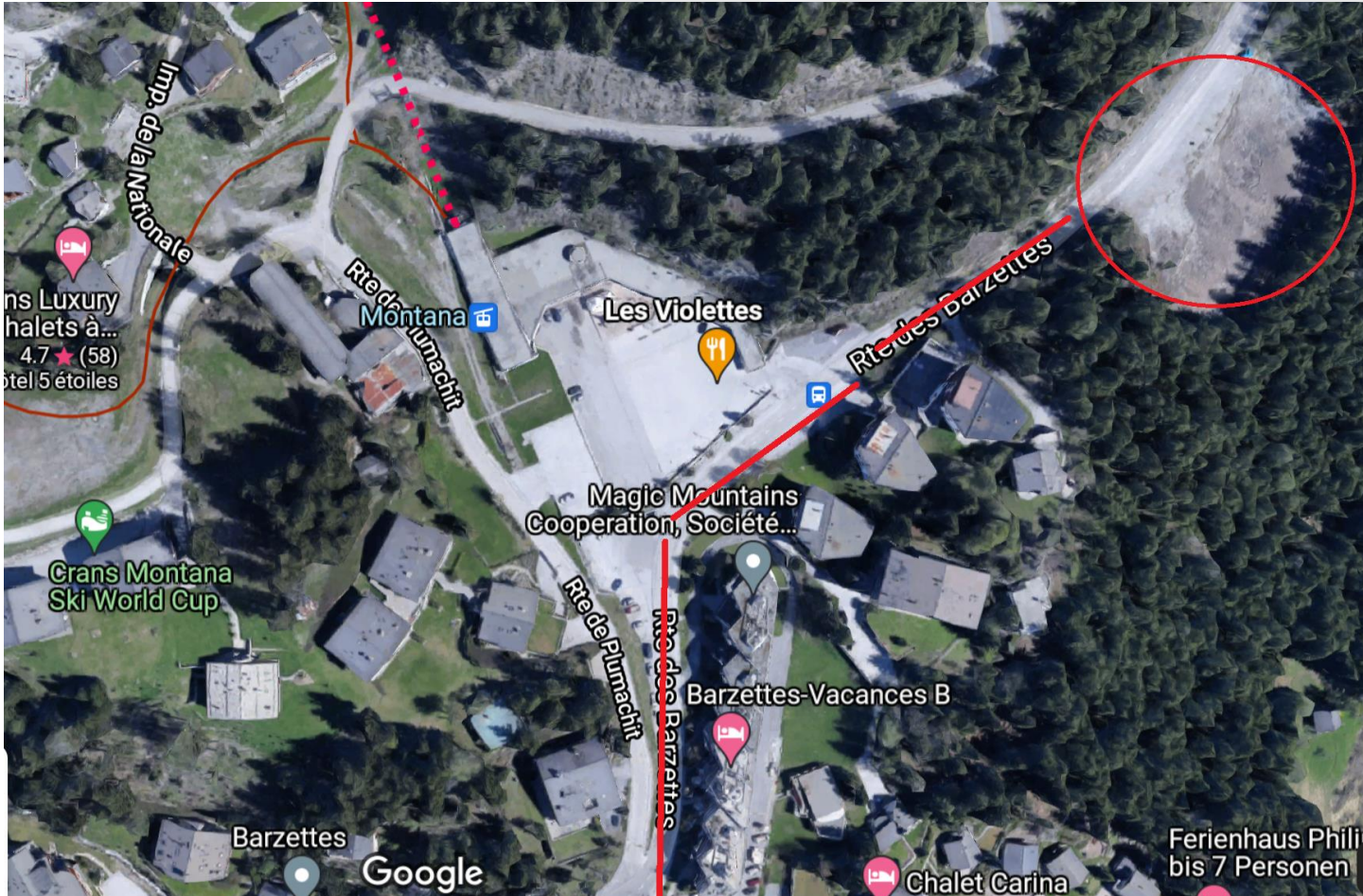
AUDI FIS COUPE DU MONDE 2022  
SKI ALPIN DAMES – 26-27 FÉVRIER

CRANS MONTANA   
*Absolutely*



# PARKING

Each team will receive a **few badges** for the **indoor (only cars) & outdoor parking**, please stick it to the front windshield.



AUDI FIS COUPE DU MONDE 2022  
SKI ALPIN DAMES – 26-27 FÉVRIER

CRANS MONTANA   
*Absolutely*

# ACCOMMODATION

- A **voucher** with the total number of nights for free accommodation and full board will be given **to the Team Captain on Saturday evening, 26<sup>th</sup> February 2022**. This voucher can then be handed to your hotel.
- The room bookings for each team are made according to the final entry list. A person featuring on the entry list and not staying at the hotel is considered as a « **no-show** » and will be charged CHF 120.- per night.
- For any arrival and/or departure before/after the official dates (22<sup>th</sup> – 27<sup>th</sup> February 2022), the full hotel price per person per night has to be paid directly at your hotel.
- In case of an early departure of any members of staff or staff from an external company, the Team Captain is paying the remaining nights.
- The number of single rooms allocated to each team is set by the FIS rules (art. 4.2.2). For any **extra single room, an additional cost of CHF 40.- / night** per single room will be charged. These additional costs have to be paid by the team.
- We kindly ask you to let your hotel know if there is a late check-out.
- **Wearing a mask and respecting the distances in the whole hotel is mandatory!**



# MEALS

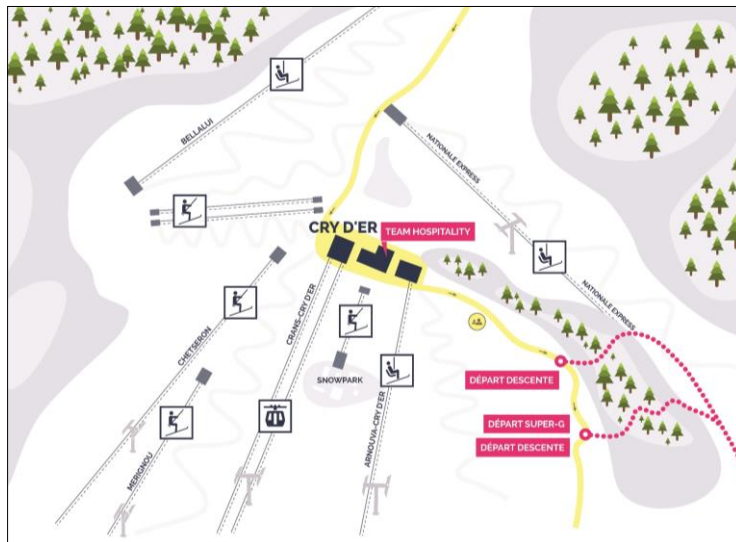
- **Lunch** will be taken everyday at your hotel.
- Upon arrival, please **communicate to your hotel, your needs** regarding the meals.
- We kindly ask you to let your hotel know every morning the number of people that are having lunch and/or dinner at the hotel.
- **Wearing a mask and respecting the distances in the whole restaurant is mandatory!**





# TEAM HOSPITALITY

- The **Team Hospitality** is located at the Cry d'Er Restaurant.
- The number of seats is limited. More information at the TCM.
- Follow the «Team Hospitality» signs.
- **Wearing a mask and respecting the distances in the whole Team Hospitality is mandatory!**



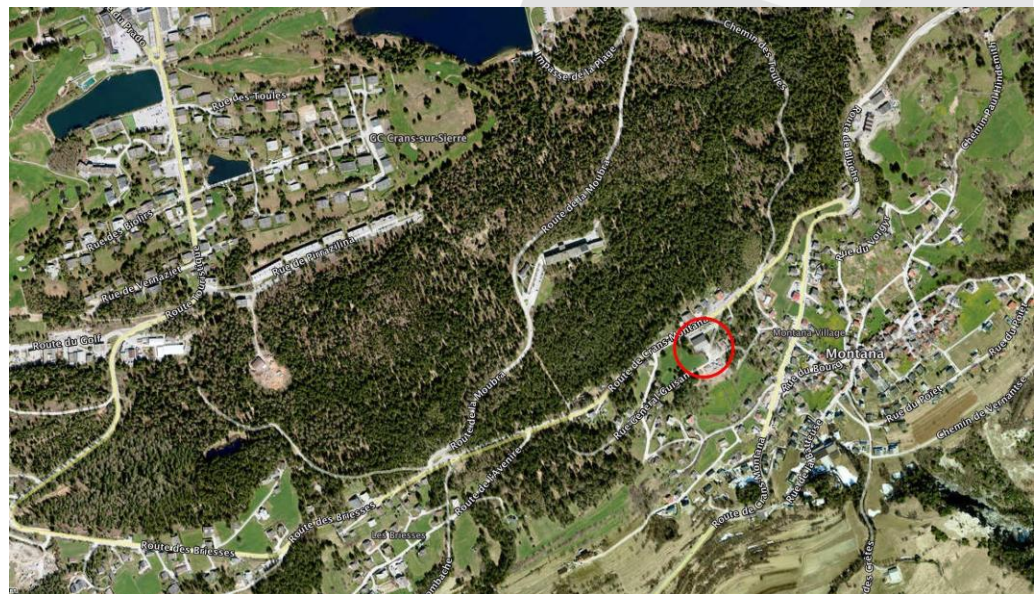
# SKI ROOM

The **official skiroom** is located at the **Maison Général Guisan** (Rue Général Guisan 15).

- Follow the signs «Local de fartage» or use the following Google Maps [link](#).
- Every team will receive 1 key for the entrance door. Please don't forget to return the key to the Race Office at the end of your stay!

**Teams are not allowed to use hotel rooms.**

**Wearing a mask and respecting the distances is mandatory!**



# WINNER CEREMONY AND PRESS CONFERENCE

## WINNER CEREMONY

- The award ceremonies are held exclusively in the **finish area**. The participants are limited to the 3 top athletes and one representative from the FIS and from the LOC.

## PRESS CONFERENCE

- If there is a Press Conference, it will be confirmed onsite.

**Wearing a mask and respecting the distances is mandatory.**





# WARM-UP COURSE & INDOOR FACILITIES

## WARM-UP COURSE

- **Mid-station of the « Nationale » slope.**
- You must have your skis on to take the chairlift « Nationale ».

## INDOOR SPORT FACILITIES

- Crans-Montana has a few sport facilities available for indoor training.
- **Booking at the Race Office.**



# CONTACT

**Organizing Committee &  
COVID-19 &  
Race Office &  
Prize Money & Travel Expenses**

**Organisation des courses de ski alpin**

Sophie Genoud  
P.O. Box 84  
CH-3963 Crans-Montana 1  
[org@skiwc-cransmontana.ch](mailto:org@skiwc-cransmontana.ch)  
+41 79 712 11 34

**Accommodation**

Pierre-Henri Mainetti  
[pierre-henri.mainetti@crans-montana.ch](mailto:pierre-henri.mainetti@crans-montana.ch)  
+41 79 673 69 25

**Accreditation**

Alexandra Duchemin  
[accreditation@skiwc-cransmontana.ch](mailto:accreditation@skiwc-cransmontana.ch)  
+41 77 474 16 86

**Head of Media**

Hugo Steinegger  
[media.sport@bluewin.ch](mailto:media.sport@bluewin.ch)  
+41 79 300 30 60



# WEBSITE & SOCIAL MEDIA

**Website**

<https://www.skicm-cransmontana.ch/en/>

**Facebook**

AUDI FIS Ski World Cup Crans-Montana or [link](#)

**Instagram**

worldcupcransmontana  
#skiworldcupcransmontana



AUDI FIS COUPE DU MONDE 2022  
SKI ALPIN DAMES – 26-27 FÉVRIER

CRANS MONTANA   
*Absolutely*





**We are looking forward to welcoming you here  
and wish you a safe trip to Crans-Montana!**



**AUDI FIS COUPE DU MONDE 2022**  
SKI ALPIN DAMES – 26-27 FÉVRIER

**CRANS MONTANA**   
*Absolutely*