

Covid-19 Protection Concept AUDI FIS Ski World Cup Lenzerheide

Date: 05 / 06 March 2022

Location: Skilift Heimberg, 7076 Parpan

Covid Officer: Olivia Stoffel, stoffel@paschiun.ch; +41 79 257 64 05

Table of Contents

1. Purpose of the event	2
2. Fundamentals.....	2
3. Responsibilities / Task Force	2
4. People Groups.....	3
Entry Requirements	5
FIS Passport – Red Group.....	5
Public Test Centre Lenzerheide	5
Access Control	5
5. Procedure in the Event of an Infringement/Violation.....	6
6. Compulsory masks.....	6
7. Hygiene Measures	7
8. Procedure When Symptoms Appear.....	7
9. Event Area.....	8
10. Accommodation.....	12
11. Catering on the Event Site	12
12. Information.....	12
13. Set-up and Break-down.....	13
14. Competition Rules	13
a. Team Captain Meeting	13
b. Media.....	13
c. Flower Ceremony	14
I. Appendix – Resident Plan	15
II. Appendix – Detailed Plan of the Finish Area.....	15
III. Appendix – Questionnaire Female Athletes - Red Group.....	15

1. Purpose of the event

On 5th and 6th March 2022, the women's skiing elite will meet for the Audi FIS Ski World Cup in Lenzerheide. The programme includes a super-G on Saturday and a giant slalom on Sunday. More than 80 athletes and over 150 officials are expected. All competitions will be shown live on SRF2 and other international TV stations. In 2021, the Ski World Cup Final thrilled more than 10 million viewers. 100 journalists from all over the world were on site. The destination of Lenzerheide is looking forward to the ski festival with two days of racing.

2. Fundamentals

This Covid-19 Protection concept is based on the current measures of the federal government, the FIS and Swiss-Ski.

- **Government**
 - Government measures have been lifted - masks in public transport and health facilities and isolation remain in place until the end of March (as of 17.02.2022)
- **FIS**
 - FIS Covid-19 World Cup Risk Management und Testing Protocol
 - FIS Covid-19 Prevention Guidelines
- **Swiss-Ski**
 - Cancellation of the measures as of 17.02.2022

Covid management in collaboration with the canton reserves the right to take stricter measures if the situation requires it.

3. Responsibilities / Task Force

- **FIS Representative:** Peter Gerdol, +41 79 692 92 18
- **Covid 19 Representative Swiss-Ski:** Dr. W. O. Frei
- **Representative OC Lenzerheide:** Luana Bergamin, +41 79 238 49 67
- **Covid-19 Health Coordinator:** Olivia Stoffel, +41 79 257 64 05 / Dr. med. Norina Messmer – Bergamin

The task force is the link to the cantonal authorities and implements measures according to their specifications. Olivia Stoffel is the contact person for the authorities and vice versa.

4. People Groups

Two groups of people are distinguished from each other on the event site:

Red Group

People who are travelling with the World Cup team or are in direct contact with it. i.e. athletes, coaches, support staff, service staff, FIS staff.

Requirements:

- PCR test before arrival
- Completed FIS Passport
- Testing during the event
- Mandatory mask

Group “Others”

Includes OC members, volunteers, employees, residents, race officials, blue light organisations, civil defence, external companies or media representatives with a valid accreditation or spectators who can show a valid ticket.

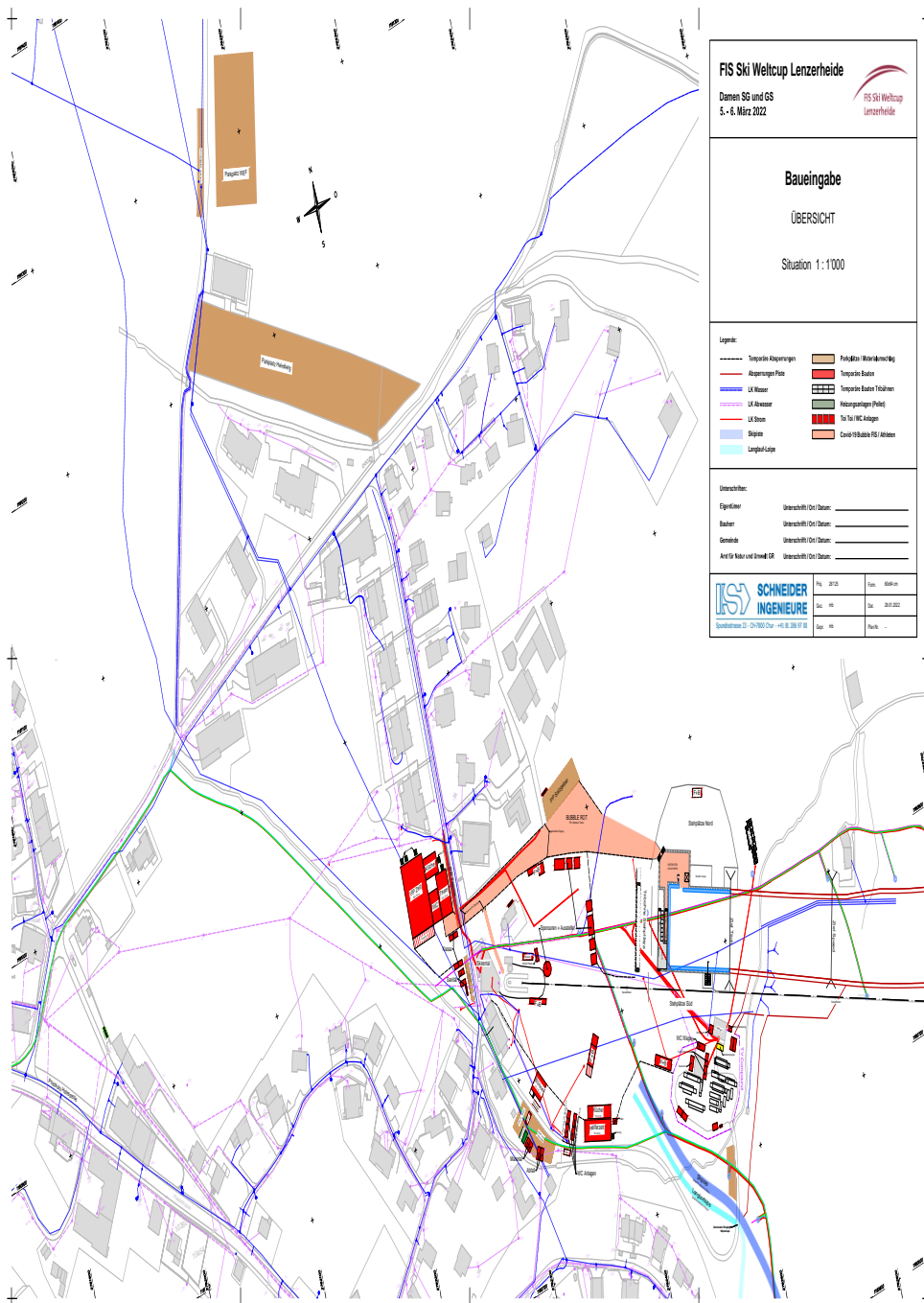
Requirements:

- No mask obligations
- Mask is mandatory only for zone crossing of accredited persons to group

The red group will be strictly separated from the other groups and will not be mixed. In addition, people from the red group must be recognised with a highlighted accreditation. A person can only belong to one group and only in previously discussed exceptions may mix with people from the red group. If a zone crossing to the red group is necessary, this person must wear a protective mask in the area of the red group.

The red group consists of people between 20 and 60 years old, with the majority of female athletes being between 18 and 35 years old. The Group “Others” will have people of all ages (0-90 years) – majority will be sporty and fit, 95% will be under 70 years old and most of the group will be vaccinated.

The zone plan of the event site shows the zones defined accordingly for the two groups. The traffic flows are managed so that the Red Group does not mix with the Group "Others".



It is important that the red group is treated separately and is subject to the strict guidelines of the FIS. In addition, an information sheet for the Red Group has been created for on-site regulations. This appendix can be found on the organiser's page and is thus available to the teams.

a. Entry Requirements

The regulations of the Federal Office of Public Health (FOPH) and the State Secretariat for Migration (SEM) apply to the current entry requirements. Foreign participants can obtain information from the following link: [Coronavirus: Entering Switzerland](#)

b. FIS Passport – Red Group

People belonging to the red group must have a Covid-19 FIS passport. The passport contains the following information: record of test data and results, record of previous infections, health questionnaire, vaccination status.

People who have recovered from a covid infection and are symptom-free (between 180 days and 14 days before the event) must upload proof of the positive test on the FIS Passport. Those in the red group who have not been vaccinated or recovered must have a negative PCR test (not older than 48 hours), their accreditation is only valid with a negative PCR test. We do not issue accreditations without checking the FIS passports. This means that these people will not receive red points on their accreditation.

PCR test before arrival – Red Group

Before collecting the accreditation, all people from the red group must upload a negative PCR test, which is not older than 48 hours, onto the FIS Passport. In addition, the health questionnaire must be completed. These documents must be completed at least 12 hours before the accreditation is collected, otherwise no accreditation can be issued.

Test centre – Red Group

The test centre offers exclusive slots for the red group from 04.03.2022 to 06.03 2022.

The test centre offers both PCR and antigen rapid tests.

A PCR test for the red group (non-vaccinated, non-recovered) is mandatory in order to travel to the next event.

c. Public test centre Lenzerheide

Lenzerheide has a public test centre at Voa Principala 68, 7078 in Lenzerheide. This public test centre in Lenzerheide is actively communicated to the Group “Others”. Everyone can book an appointment slot ([link to the test centre website](#)) for a test.

The test centre offers both PCR and antigen rapid tests.

d. Access Control

Only people with a valid ticket or accreditation will be granted access to the event area at the location Group “Others”.

The following also applies to the Red Group:

- **Red Group:** Control of the FIS Passport (PCR test before arrival for all) / accreditation. A "red sticker" will be printed on the accreditation card.

Training for Control Staff at Entries

People helping at the entrance controls will receive a detailed briefing in advance.

- Verbal briefing in advance and on the day of the assignment for those arriving on the day.
- Written briefing in advance by email (approx. 1 week before)

The briefing includes the following information, which is communicated verbally and in writing:

- FIS Passport / Accreditation incl. Covid point (red) control
- Ticket control
- Valid entry wristband overview for entry control.
- Detection of Covid-19 disease symptoms and handling of a suspected case.
 - Process a suspected case:
 - A suspected person is being made aware of Covid-19 symptoms.
 - The person is being advised to get tested at the public testing centre in Lenzerheide.
 - If necessary, the person responsible for Covid-19: Olivia Stoffel, +41 79 257 64 05 will be contacted. In consultation with the medical representative Norina Messmer-Bergamin, a decision will be made regarding the person's admission to the event site.

5. Procedure in the Event of an Infringement/Violation

In the event of a violation of the Covid-19 protection concept, the person (visitor or participant) will be notified and warned. In the event of repeated breach(-es) of the Covid-19 protection concept, people may be expelled from the event site. The organiser works with a briefed security company and can call them in for additional support.

6. Compulsory masks

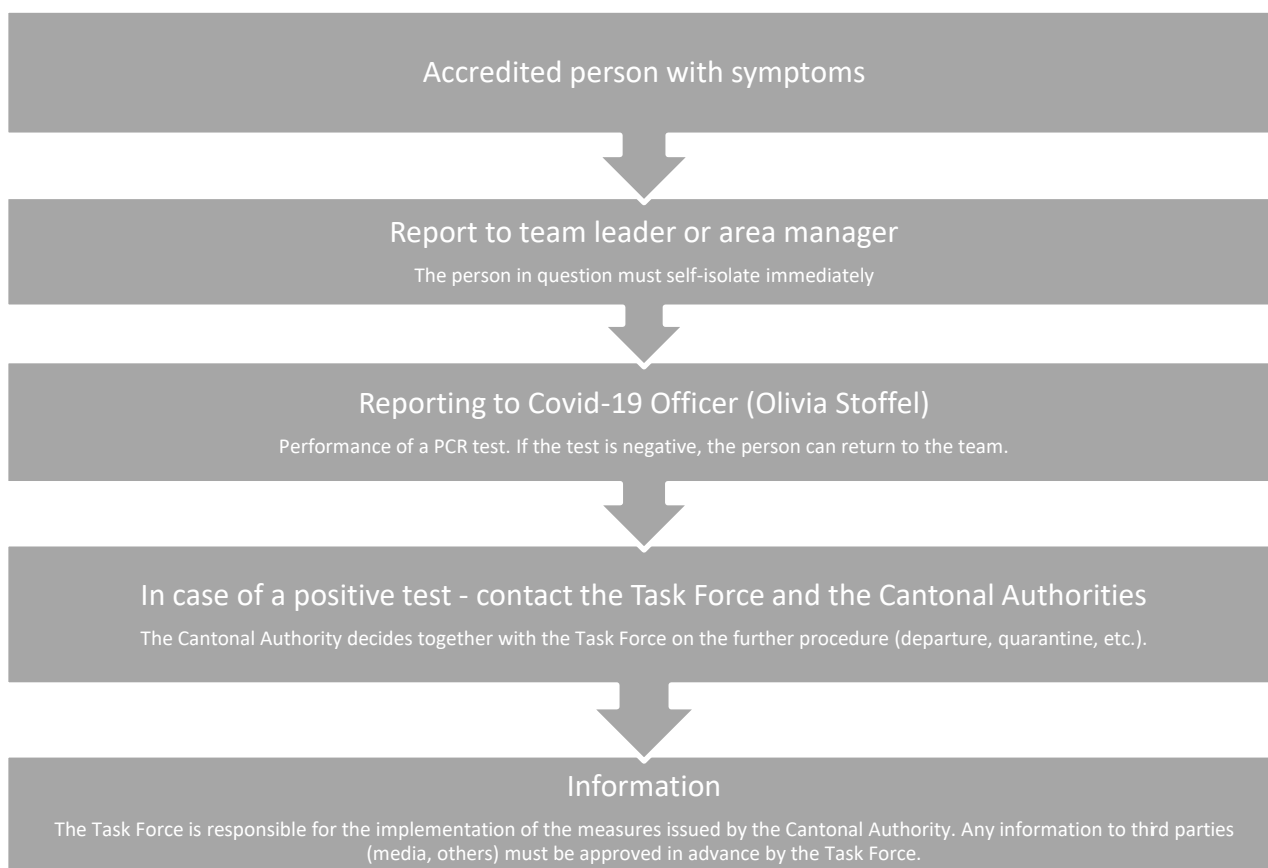
Masks are compulsory for the following people/situations:

- The Red Group during the entire event indoors and outdoors (FIS requirement)
- Media representatives during the entire event indoors and outdoors (FIS requirement)
- OC / volunteers / officers / blue light organisations in contact with the Red Group.
- In all vehicles (including drivers). In addition, the surfaces (such as door handles) must be cleaned regularly.
- For the use of public transport (incl. mountain railways), the federal government's regulations for public transport apply.
- Masks are mandatory indoors.

7. Hygiene Measures

- All people have access to the ability of cleaning their hands regularly. For this purpose, hand disinfectants and, in the case of publicly accessible washbasins, soaps are provided.
- All surfaces will be cleaned regularly.
- In indoor areas, the organiser will ensure regular and sufficient air exchange in work and guest rooms. In rooms with running air-conditioning and ventilation systems, air recirculation will be avoided as far as possible (fresh air supply only).
- Handshaking will not be performed.

8. Procedure When Symptoms Appear



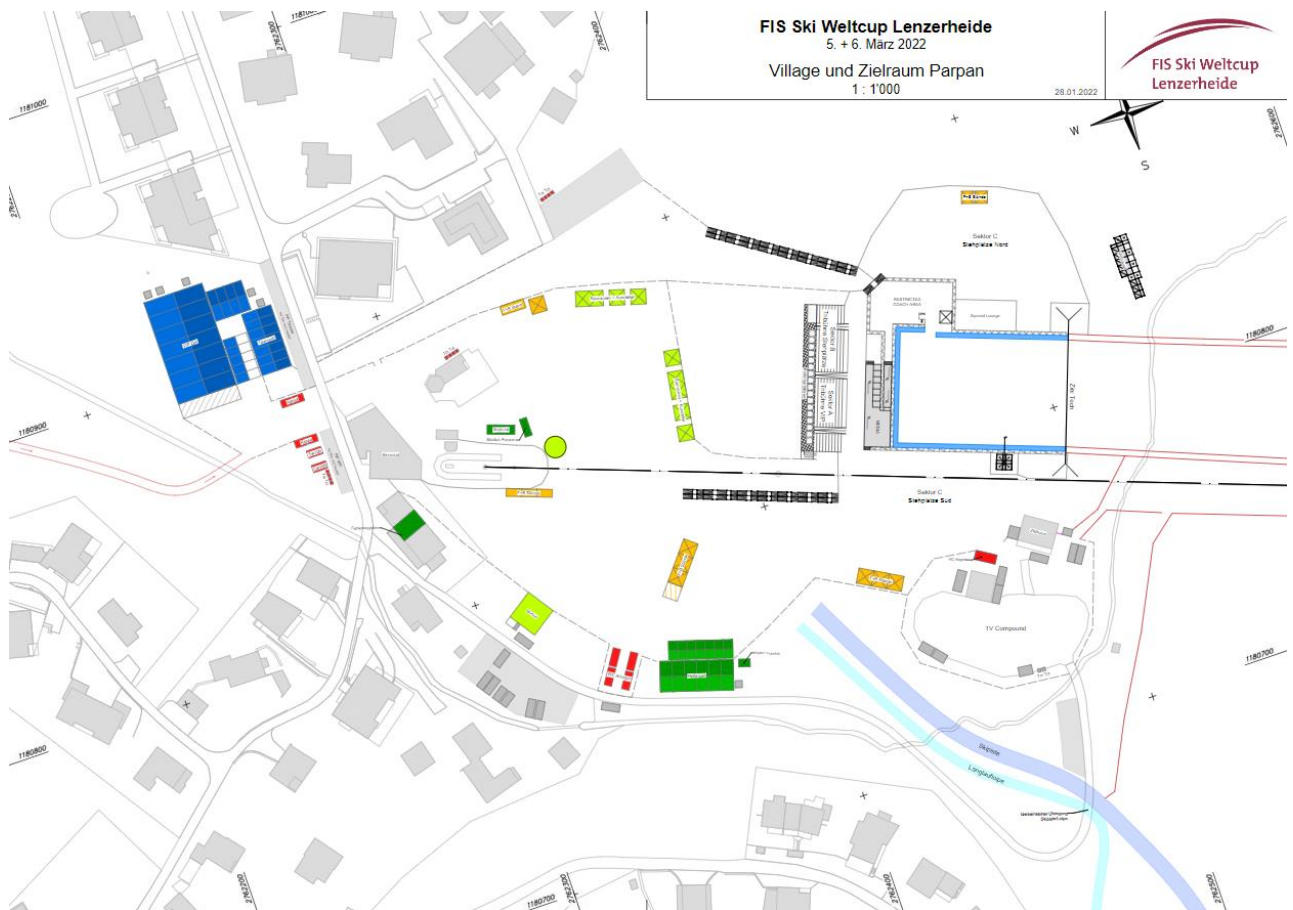
Spectators

During the event: If a possible covid disease is suspected, the following process is initiated:

- A suspected person is being made aware of Covid-19 symptoms.
- The person is being advised to get tested at the public testing centre in Lenzerheide.
- If necessary, the person responsible for Covid-19: Olivia Stoffel, +41 79 257 64 05 will be contacted. In consultation with the medical representative Norina Messmer-Bergamin, a decision will be made regarding the person's admission to the event site.

9. Event Area

The event area is located around the Heimberg ski lift in Parpan.



The event area will be closed off on all cross-country ski trails and winter hiking trails leading to the event area. The cross-country ski and winter hiking trails will be diverted with signals accordingly. Communication regarding the closure of the cross-country ski runs/trails will be made by the Lenzerheide mountain railways, Lenzerheide Marketing and Support AG and www.weltcup-lenzerheide.com. There will also be an information board available at the diversions and control posts.

Outside the stadium, the risk of crowds is considered to be very low. "Normal" guests (skiers and snowboarders) are subject to the covid regulations of the mountain railways. They cannot participate in

the event. The entire event area is only accessible to people with a ticket. The finish area is closed off, as are the slopes leading to the finish area. A separate lift entrance is planned for "normal skiers".

Infrastructure

- **Spectators access control:** Personalised spectators tickets will only be sold online. There is one entrance to the event site (Mülistrasse Parpan, Heimberg valley station).
- **The Red Group:** Only teams, FIS staff and accredited, specifically assigned OC volunteers are allowed in this area. This area includes the team area with the team hospitality and team parking, the race office (Turnhalle Lenzerheide) as well as the start-finish area and the entire racecourse.
- **Accreditation handout:** The handout takes place in the race office (Turnhalle Lenzerheide) The race office will be open daily from 02.03.2022.
- **VIP & audience stand:** There is a VIP area on the stand as well as a VIP tent. The areas are generously sized and offer enough space.
- **Doping Control:** The doping control will take place at the Hotel Bestzeit in the cloakrooms of the sauna. This area is exclusively reserved for the red group for the time of the races.
- **Ski Waxing rooms:** Located externally in the team hotels. The rules of the respective hotel apply. A communal ski waxing room is located in Churwalden. On Sunday, the organiser will provide outdoor waxing tables for Red Group.
- **Cloakrooms and toilets:** Toilets are provided for the Red Group and for the Group "Others",
- **Team Captains Meeting:** The TCM will take place in the Aula in Lenzerheide (approx. 20 people, "one per nation" exclusively Red Group) are on site, the rest online.
- **Hotel rooms for the Red Group:** Available hotel rooms will be offered to the Teams
- **Tents:**
 - **General:** masks are compulsory in all indoor areas (all tents) (FFP2 mask for the Red Zone). The control will be carried out by the security service. There will be check points in front of all entrances.
 - **Volunteers:** The volunteers' area is located in the Village and measures 10x25m². This is where they will be catered, receive their equipment and will be briefed. There are seats for the volunteers. The protective masks are only taken off for meals. Entrances as well as behaviour in the tent will be controlled.
 - **Spectators:** Spectators will be catered at open stalls in the Village. A self-service concept is planned with drinks and catering options. Consumption will take place standing in the outdoor area.
 - **Media Centre:** The media area is located in the Turnhalle Lenzerheide. 70 workstations for media will be set up in the Media Centre. An additional 25 workstations will be made available at the Hotel Bestzeit in Parpan.
- **Team Hospitality (exclusively for the Red Group)**
- **TV Compound:** located in the car park in front of the finish house, completely separated from the Red Group by fences.



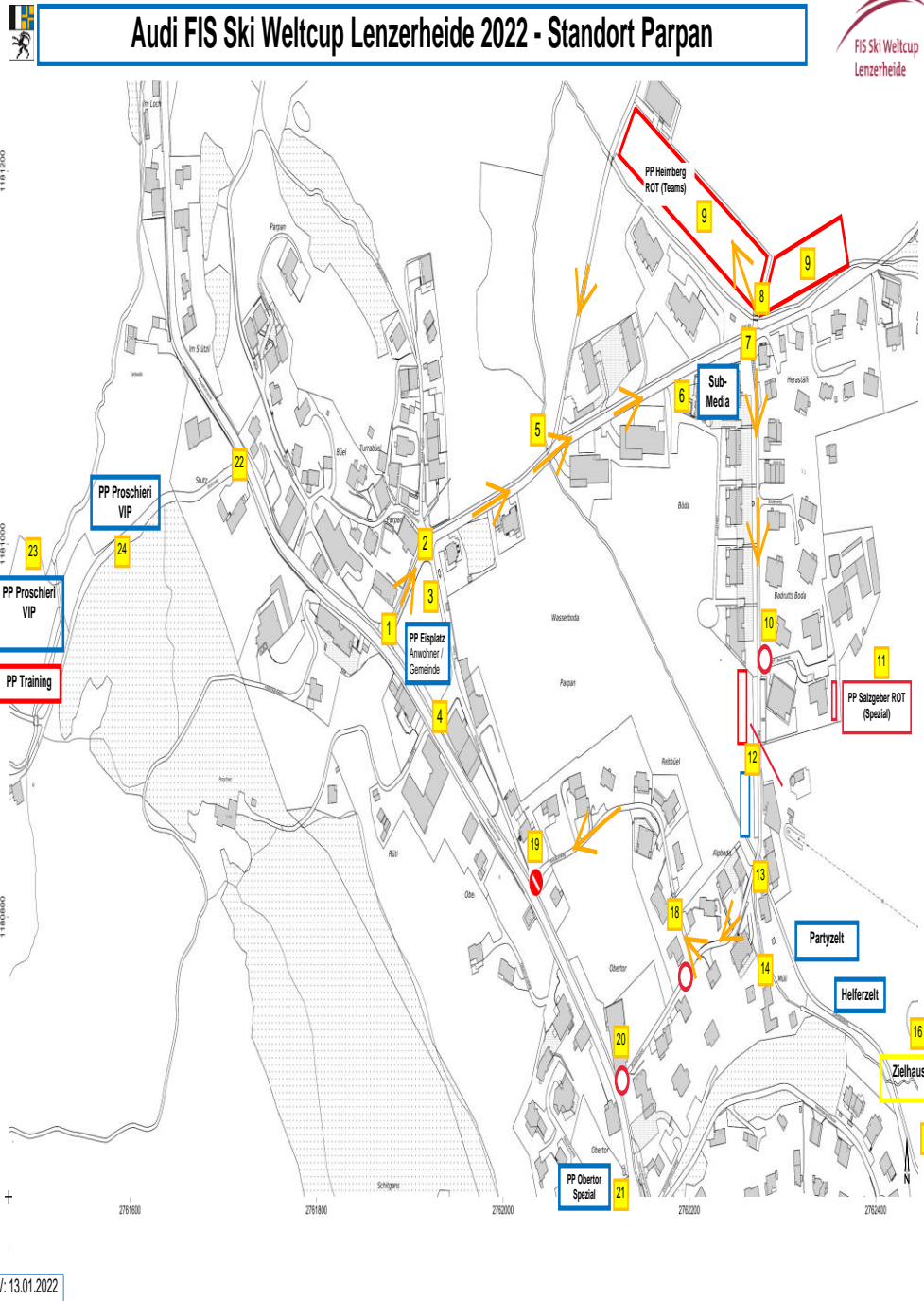
FIS Ski Weltcup Lenzerheide

- **Heimberg and Salzgeberhof car park:** car park for FIS & the Red Group only
- **Proschieri car park:** car park for the Group “Others”
- **Award ceremony:** There will be no public award ceremony, only a flower ceremony directly after the competition in the finish area.
- **Facilities:** the ski area of Arosa Lenzerheide will be open as normal during the race days. The OC and the mountain railways of Arosa and Lenzerheide have agreed on the following regulations: all facilities will be open for normal skiing operations. At the top and bottom of the Heimberg and Motta chairlifts, the Red Group will be separated from the normal ski guests for boarding and disembarking. Should new regulations be issued by the Federal Council regarding the operation of the ski areas, a reassessment of the protection concept and the affected areas must take place.



Locations off-site belonging to the event

- Car Park



- **Accreditation:** The accreditation office is located in the Aula in Lenzerheide (Voa Sporz 4, 7078 Lenzerheide). Masks are compulsory for everyone indoors.
- **Public test centre Lenzerheide:** The public test centre Lenzerheide is located in the former UBS building (Voa Principala 68, 7078 Lenzerheide).
- **Accommodation:** The accredited people as well as the spectators will stay in hotels, holiday rentals or on a camping site in Lenzerheide.

10. Accommodation

In Hotels the Covid-19 protection concept of Hotellerie Suisse applies ([Link to HotellerieSuisse](#)). If there are other hotel guests in the same hotel, the Red Group is separated as best as possible, e.g. with separate dining rooms.

11. Catering on the Event Site

The catering facilities on the event are separated in different areas. What applies to all areas: Care will be taken to ensure that queuing is organised and that a one-way system is guaranteed.

The Red Group: a separate catering area (Team Hospitality tent) will be provided for the Red Group onsite. FFP2 masks are mandatory for everyone in the entire tent without any exceptions.

Spectators: The visitors will be catered for outdoors. A self-service concept with drinks and food options is planned. Consumption will take place standing in the outdoor area. Sufficient disinfectant is available onsite.

Media representatives: Media representatives will be catered in Turnhalle Lenzerheide. Masks are compulsory.

OC / Volunteers: The volunteers will be catered in tiers in the volunteers' tent (self-service). There are enough seats available.

12. Information

Both groups – Red and “Other” – will be informed in advance and in detail about the points from the protection concept that are relevant to them.

The OC and the volunteers will be informed in advance about the protective measures that apply to them. In addition, a Covid factsheet for volunteers will be sent out in advance and information will be published on the event website. <https://www.weltcup-lenzerheide.ch/en>

Media representatives will receive a detailed briefing on the protection measures in place at the point of registration on the website.

Spectators/VIPs will be made aware of the Covid measures at the time of ticket purchase. In addition, the applicable rules and information will be communicated on the website.

13. Set-up and Break-down

Set-up for the event will begin on 20th February and continue until 4th March 2022, with break-down taking place until 11th March 2022

The following rules apply during set-up and break-down:

General:

- Following the hygiene and distance rules of the FOPH
- Civil service / military and volunteers test on a voluntary basis
- Meetings and breaks are held outdoors if possible.

Outdoor:

- No mask requirement

14. Competition Rules

a. Team Captain Meeting

The first Team Captain Meeting (TCM) will take place physically on site in the Aula Lenzerheide. The second meeting will take place online.

Access to the Team Captains Meeting will only be granted to people from the Red Group with a valid accreditation. Accreditations will be checked before the entrance. Masks are compulsory both in the queue and inside. It must also be possible to ventilate the room. The FIS can adapt the regulations for the TCM at short notice in consultation with the Covid management.

b. Media

A «3G» obligation (vaccinated, recovered, tested) applies to media representatives. The certificate will be checked during accreditation. Without certificate the accreditation will be denied.

In all media areas - especially in the media centre and in the mixed zone - masks are mandatory. Media representatives are responsible for organizing their own masks.

Media will not be able to have direct access to athletes, competition areas or team zones – except Mixed Zone. However, in the Mixed Zone, there is a fence between the media representatives and athletes. Bringing an extended microphone stick is recommended.

Athletes will wear masks everywhere except in the finish area. This also applies to the leaderboards, live interviews and the mixed zone. At no time should a journalist ask an athlete to remove his/her mask.

There will be no physical media conferences. If necessary, the FIS will conduct online press conferences via Zoom, where media representatives can ask questions.

Media Centre

Only people with a valid accreditation will be admitted to the Media Centre. Masks are compulsory both in the queue and inside.

Press conference



There will be no physical press conferences and appointments.

Mixed-Zone

The mixed zone requires a double fence with 1 meter distance between the athletes and the media. The paths in the mixed zone will be built with sufficient space (1.5 metres one-way / 2.5 metres two-way). A minimum distance and a mask requirement applies.


c. Flower Ceremony

The Red Group is strictly separated from the other groups and a separate entrance must be available. In addition, masks are compulsory in the Red Group. Masks are also compulsory for people from other groups who are in direct contact with the Red Group.

Function in OC OC-President
First / Last Name: Luana Bergamin
E-Mail: luana.bergamin@weltcup-lenzerheide.ch
Mobile: +41 79 238 49 67

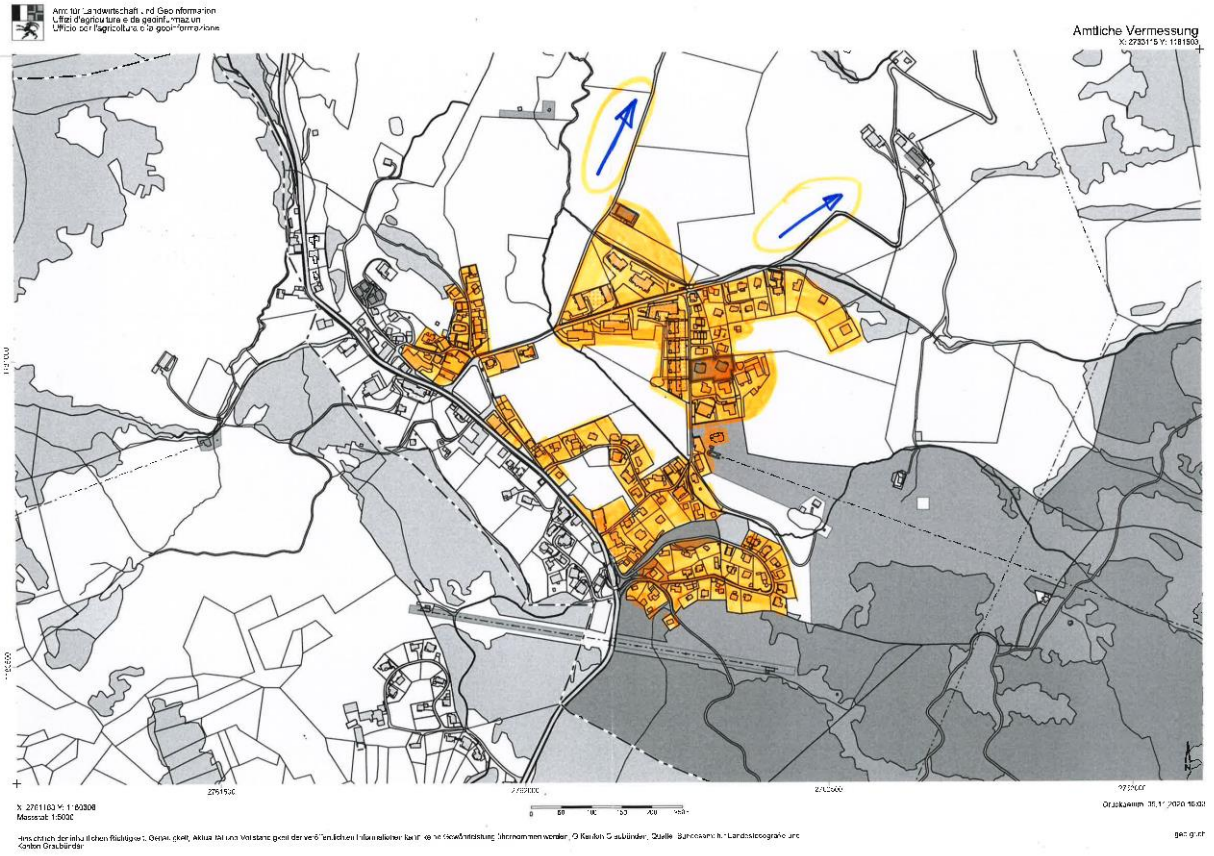
Head Office
Doriano Bergamin
doriano.bergamin@weltcup-lenzerheide.ch
+41 79 761 08 69

Place, Date: Lenzerheide, 28.2.22

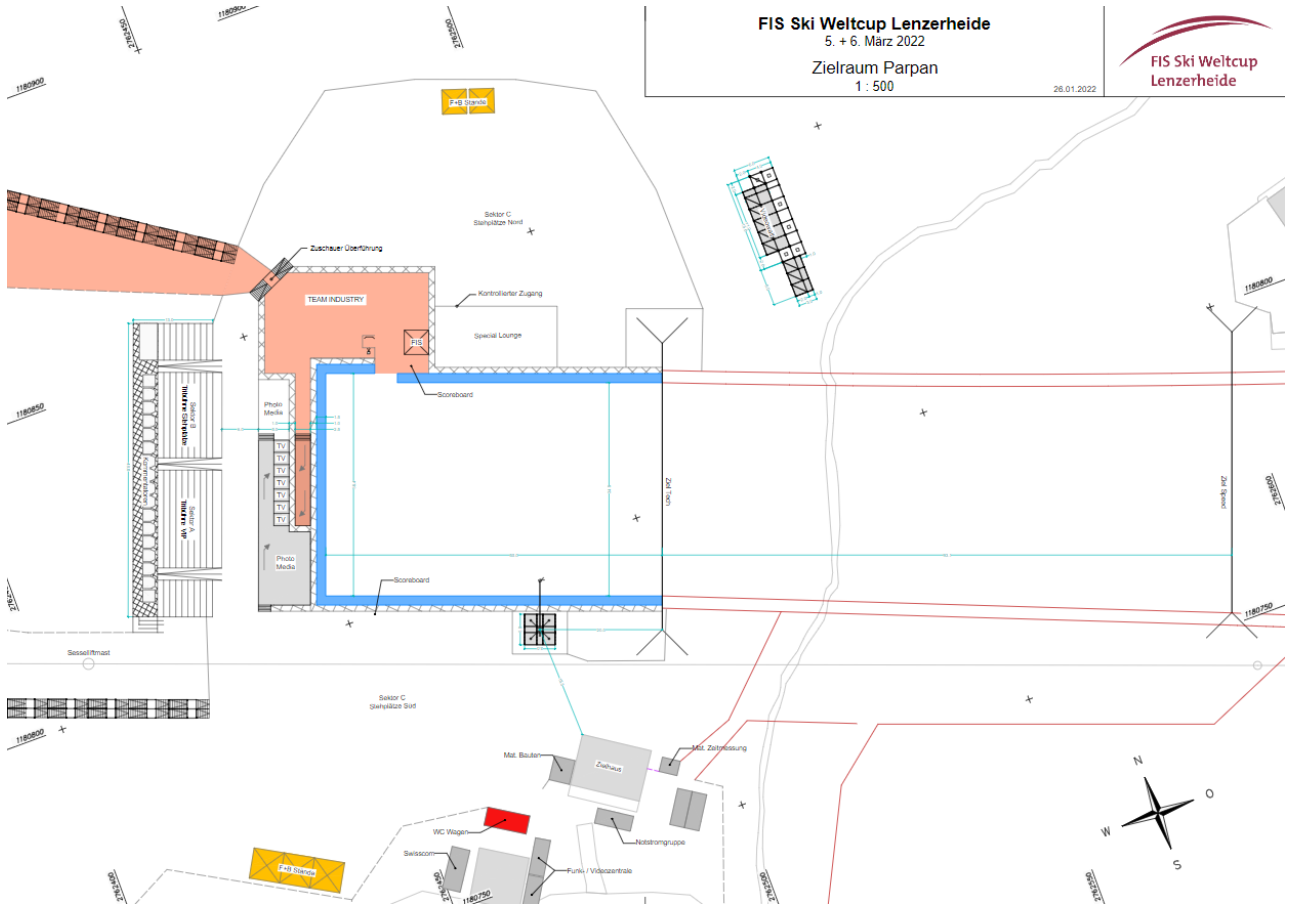


Lenzerheide World Cup Association
PO Box 983
7078 Lenzerheide

I. Appendix – Resident plan



II Appendix – Detailed Plan of the Finish Area



III Appendix – Questionnaire Female Athletes - Red Group

Before the Event:

	No	Yes
Have you had any cold symptoms (cough, cold, sore throat, difficulty breathing, fever) or vomiting/diarrhoea in the last 14 days?		
Did you have any loss of taste or smell?		
Have you been in contact with a person with that tested positive for Covid-19 in the last 14 days?		
Have you been in quarantine in the last 14 days?		
Have you tested positive for Covid-19 in the last 14 days?		

During the Event

	No	Yes
Do you have a fever above 38.0°C?		
Do you have a cough? If yes, more cough than usual? Dry cough?		
Do you have a shortness of breath?		
Do you have a loss of taste or smell? Unusual tiredness? Unusual aching limbs? Diarrhoea/vomiting? Unusual headaches?		