



General Info Booklet

Audi FIS Ski World Cup

Garmisch-Partenkirchen

Ladies Downhill and Super-G

29./30.01.2022

Stand: 29.12.2021

Table of Contents

General Rules	4
Covid-19 Safety Protocoll	4
Basics / General Rules of Conduct.....	4
Journey to Garmisch-Partenkirchen.....	5
Accreditation/Race Office (Kongresszentrum).....	5
Accreditation Groups	6
Table 1.1	6
Leisure activities during your stay in Garmisch-Partenkirchen	7
Teams and Equipment Partners	8
Team Hotels.....	8
Race office	8
Drive from the accommodation to the event site.....	8
Event site	8
Cable Car Kreuzeck-Talstation.....	9
Appendix Finish Area.....	9
Start	10
Team Hospitality.....	10
Course Crew	10
Media.....	11
On-Site.....	11
Transportation.....	11
Accreditation & Press Office	11
Press Conferences	12
TV-Cabins.....	12
Photo Zones.....	12
Award Ceremony at the finish area.....	12

Medical care	13
Principle.....	13
Medical Organization Chart.....	13
Description of local hospitals in case of medical treatment	14
Klinikum Garmisch-Partenkirchen.....	14
BG Unfallklinik Murnau	15
Doctor's Meeting.....	16
First aid posts	17
Mountain rescue service (Bergwacht)	17
Emergency doctors.....	17
Communications.....	18
Helicopter	18
Description of first aid protocols.....	19
General principles.....	19
Team doctors.....	19
Outside Competition	20

General Rules

Covid-19 Safety Protocol

Due to the COVID-19 pandemic, the **AUDI FIS Ski World Cup in Garmisch-Partenkirchen on 29th & 30th of January 2022** must be organised and executed with increased security measures. The event has to be executed without any audience. Only accredited and registered persons who have to be on site for work purposes are admitted to the event.

Useful links:

https://www.rki.de/DE/Content/InfAZ/N/Neuartiges_Coronavirus/nCoV.html

<https://www.corona-katastrophenschutz.bayern.de/faq/index.php>

Basics / General Rules of Conduct

- it is the responsibility of every person to adhere to this policy
- respect hygiene measures
- wash hands regularly and thoroughly
- regular and correct use of provided disinfectant dispensers
- it is obligatory to wear a FFP2-mask in ALL areas (indoors and outdoors)
 - o Except:
 - during mealtimes
 - during the practice of sport
 - athletes in the start and warm-up area
- cover your mouth and nose with your bent elbow when sneezing or coughing
- a minimum distance of 1,5 m applies everywhere
- avoid shaking hands
- avoid personal contacts or limit them to the absolute minimum
 - ⇒ this also applies to the times outside the event area
- avoid contact with people who do not belong to your group
- check your own health situation daily (if you feel ill and suffer from symptoms such as fever, cough, rhinitis, conjunctivitis or other flu symptoms, stay in your room and call the SOS COVID-19 number +49 xxx)
 - ⇒ this case, the Covid-19 workflow will be executed

We appeal to EVERYONE to take their OWN RESPONSIBILITY and to comply and implement all measurements and recommendations made! Guidelines are used to implement or control compliance with the COVID-19 specifications. For your own safety and the safety of other people, you must follow the instructions of the operational staff. We reserve the right to exclude you from the event and to take legal action in the event of noncompliance with the COVID-19 regulations. The measurements defined were determined in accordance with the current regulations from 15.12.21. The organizer reserves the right to make necessary changes, which will be announced immediately.

Travel restrictions and journey to Garmisch-Partenkirchen

- in case of COVID-19 symptoms do not travel to the venue
- avoid stops between your departure point and the event location
- avoid contact with other people - especially outside the team
- from the 23rd of December 2021 onwards, every person older than 6 years there is an obligation to carry a Covid certificate, either a negative PCR-test (not older than 48 hours) or a recovering certificate of Covid-19 or a vaccination certificate



Corona-Einreiseregeln (Kurzübersicht)

	Digitale Einreiseanmeldung (DEA) § 3 CoronaEinreiseV	Nachweispflicht (Personen ab 12 Jahren) § 5 CoronaEinreiseV	Quarantänepflicht (Absonderung) § 4 CoronaEinreiseV	Beförderungsverbot § 10 CoronaEinreiseV	Ausnahmen
Risikogebiete	Virusvariantengebiet Kontrolle vor Beförderung und bei Einreise ✓	Bei Einreise bzw. vor Beförderung: Negativer PCR-Test (max. 72h) <u>oder</u> Antigen-Test (max. 24h) (Impf-/Genesenennachweis nicht ausreichend) ✓	14 Tage ✓	✓	DEA: § 6 I Nr. 1 – 7, 11b Testpflicht: § 6 III Nr. 2: Sonderregeln für Pendler Quarantäne: § 6 I Nr. 1 – 7, 11b, Modalitäten u. a. für Transportpersonal § 6 II Nr. 1d Alt. 1 Beförderungsverbot: § 10 II Nr. 1 – 10
	Hochrisikogebiet Kontrolle vor Beförderung und bei Einreise ✓	Bei Einreise bzw. vor Beförderung: Impf- oder Genesenennachweis <u>oder</u> negativer PCR-Test (max. 72h) <u>oder</u> Antigen-Test (max. 48h) ✓	10 Tage, Verkürzung ab Einreise mit Impf- oder Genesenennachweis <u>oder</u> ab 5. Tag nach Einreise mit negativem Testnachweis; für Kinder unter 12 Jahren Ende automatisch nach 5. Tag ✓	✗	DEA: § 6 I Nr. 1 – 11 Nachweispflicht: § 6 III Nr. 1; Nr. 2: Sonderregeln für Pendler Quarantäne: § 6 I Nr. 1 – 11 und § 6 II
	Sonstige Gebiete ✗	Bei Einreise bzw. vor Beförderung Luftweg: Impf- oder Genesenennachweis <u>oder</u> negativer PCR-Test (max. 72h) <u>oder</u> Antigen-Test (max. 48h) ✓	✗	✗	Nachweispflicht: § 6 III Nr. 1 i. V. m. I Nr. 3, 4 und durch zust. Landesbehörde § 6 III Nr. 2: Ausnahme für Pendler, sofern sie nicht auf dem Luftweg einreisen

Accreditation/Race Office (Kongresszentrum)

- due to the current situation, we as organizers have to limit the number of accredited persons; please only accredit people who are really necessary during the World Cup races
- each team member officially named by the respective National Ski Federation via the FIS online system must submit a negative PCR entry test not older than 48 hours
- it is mandatory to fill out the Whereabouts and the pre-Health Questionnaire which is included in the FIS Covid-19 Passport
- the COVID-19 test protocol of each individual team member must be submitted via the FIS COVID-19 Passport no later than 6 hours before the accreditation is picked up
- only after the above mentioned documents have been recorded in the FIS Covid-19 passport, the accreditations will be handed out to the team captain or one nominated person and the reserved rooms in the hotel may be occupied

Accreditation Groups

The security plan provides that only the following persons should be granted access to the event. All attending persons are divided into groups (COLORS) and will be registered.

Table 1.1

Accreditation Group	Number	Tests Required	Accreditation/Registration
RED BUBBLE Athletes, coaches, support, service, SRS, FIS, Timing & Data	Approx. 400	PCR entry test on FIS PASSPORT	Women: Kongresszentrum Garmisch-Partenkirchen
BLUE BUBBLE Media, HB and OK employees: - media and HB - OK: closest management, start/finish/team hospitality/racing office, shuttle driver - Volunteers: Production along the racing track - External companies	Approx. 300	Media: PCR entry test on FIS PASSPORT OK employees/ closest management: PCR entry test External companies: PCR entry test	Women: Kongresszentrum and DSLH-Haus Garmisch-Partenkirchen Volunteers: registration in volunteer's tents (next to the finish area)
GREEN BUBBLE Visitors /VIPs	NO VISITORS!!! NO VIPs!!!		

According to the table above, the RED and parts of the BLUE Group (External Companies) must upload a PCR test not older than 48 hours to the FIS PASSPORT page before arrival.

ATTENTION: Persons with a positive PCR test within 2 weeks prior to arrival cannot participate in the event.

COVID-19 Communication

- In case of symptoms during 27th and 30th of January 2022 please call the LOC number immediately (telephone number will be announced)
 - o LOC activates the COVID-19 rescue chain
 - o all communication regarding COVID-19 must be coordinated with the FIS, the LOC and the local health authority Garmisch-Partenkirchen.

Leisure activities during your stay in Garmisch-Partenkirchen

- during all recreational activities, remember to comply with the COVID-19 measurements such as social distancing, wearing FFP2-masks, hygiene and contact avoidance
- restrict your leisure activities to necessary shopping as well as urgent tasks only
- spend your free time only with members of your team/small group
- To keep the risk of infection as low as possible, the LOC recommends:
 - o Stay only in small groups
 - o Avoid contact with other teams, tourists or fans
 - o Restrict contact with other people
 - o Keep your distance, wash your hands frequently and disinfect them as often as possible

Teams and Equipment Partners

Team Hotels

- the LOC has reserved all team accommodations
- each team member is obliged to stay in the accommodation allocated by the LOC for the duration of the event
- wear a FFP2-mask in all public areas
- if possible, there will be no meals in buffet style and separate eating rooms for the red bubble
- further hygiene measures according to the hotels policy
- check-in of all team members only by the team captain
- maintain social distancing in all areas
- avoid using the elevators

Race office

- The **Team Captains' Meeting** will take place at the Richard Strauß Saal, which is located at the Kongresszentrum – (rear entrance first floor)
 - o Team Captains' Meeting:
 - limited number of participants (1 representative per team) - maximum 50 persons
 - necessary distance between the chairs
 - wearing a FFP2 mask is obligatory
- the **race office and accreditations** for the RED and BLUE bubble is located at the Kongresszentrum (rear entrance – basement)

Drive from the accommodation to the event site

- preferred transport in your own teams' vehicles
- avoid stops between the hotel and the venue
- use the allocated and designated parking space for your teams only (red parking space/ATS)

Event site

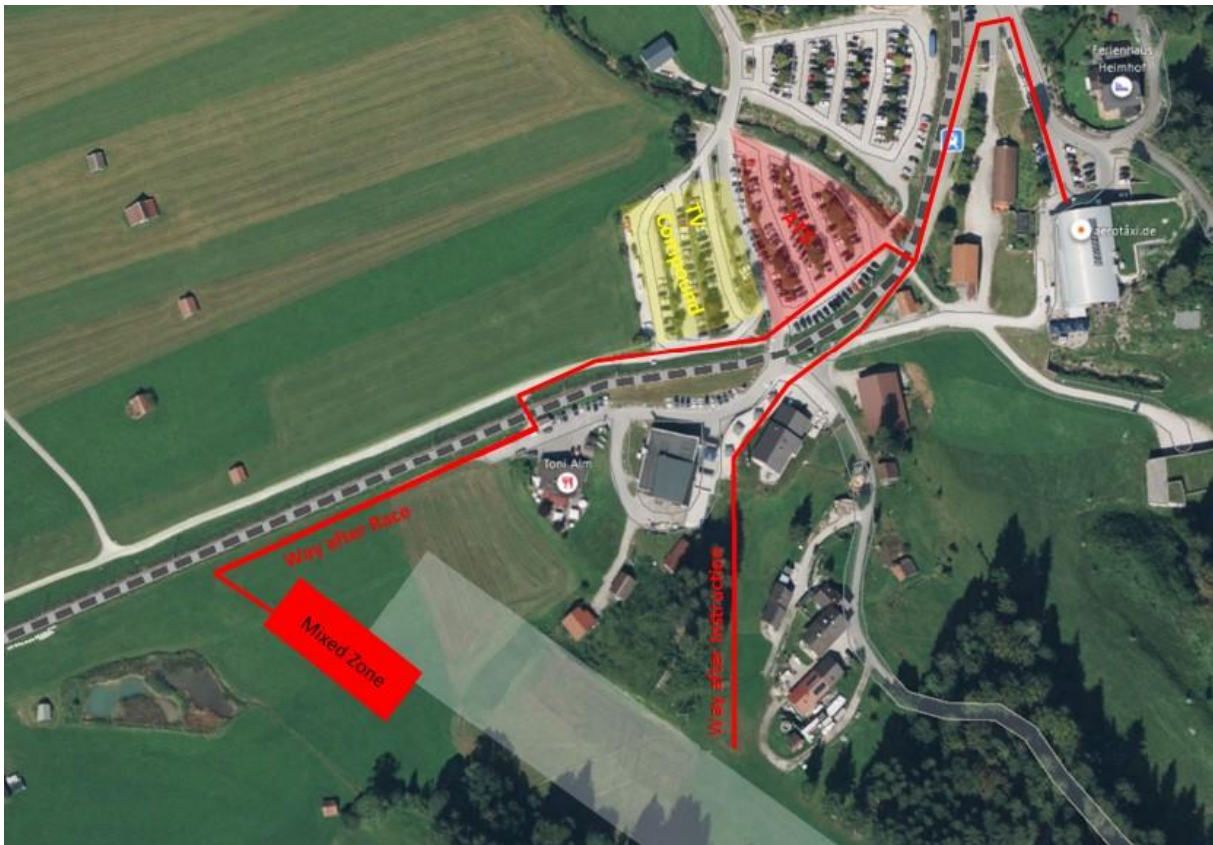
- maintain social distancing
- remain in the assigned and marked team zones (red zone)
- the team zone (red zone) is cordoned off and will be accessible to designated accredited people only
- avoid direct contact with other teams, employees or press
- FFP2-masks must be worn on the event site, except:
 - o during the practice of sport
 - o during mealtimes

- If any member of the team feels unwell or has COVID-19 symptoms, contact the LOC number (telephone number will be announced)
- the number is available 24 hours a day from Thursday 27th – Sunday 30th of January 2022
- there is an isolation room near the event area in case of symptoms at the DSLV-Haus (An der Kandahar 11, 82491 Grainau)

Cable Car Kreuzeck-Talstation

- Separate entrance and exit for athletes / coaches (group RED)
- mandatory FFP2-masks in the cabin
- reserved cabins for athletes and teams, RED and BLUE Group must not use the same cabins
- a maximum of 7 people may use one cabin and all 7 people must be of the same group
- one-way walking routes from the finish area and after inspection area to the cable car
- ATTENTION: only the best 10 athletes must ski to the finish area after inspection, all other athletes use the “way after inspection”

Finish Area Kandahar



Start

- the start area for the women DH is located at Tröglhang – which means that you only need the cable car Kreuzeckbahn to get to the start area
- the start area for women SG is located at Waldeck – also for the SG only one cable car (Kreuzeckbahn) is necessary
- the start area is reserved for athletes, team members and start personnel only; it is fenced in and cannot be entered by staff or guests
- start tent: max. 1 athlete + 2 team members with FFP2-masks
- 1 Start Judge, 1 Swiss Timing Starter, 1 Hand Timing, 1 Access Controller (all with mandatory FFP2-masks)
- in the warm-up tent (not closed) a distance of 1,5 meter must be kept
- the starting numbers will be handed out by only 1 person
- please respect FFP2-mask obligation and distancing

Team Hospitality

- it is located next to the top exit of the cable car Kreuzeckbahn, called “Kreuzeckhaus”
- obligation to wear a FFP2- mask in the team hospitality area
- the entrance is limited to athletes and coaches
- prepared food and drinks are available in the team hospitality area
- indoor toilets are of course located at the Kreuzeckhaus, an additional Dixi-toilet will be built up around the start area
- keep your distance all the time
- please sit together with your team colleagues only
- continuous disinfection of tables / chairs is obvious
- if any member of the team feels unwell or has COVID-19 symptoms, contact the LOC number immediately (telephone number will be announced)
- the number is available 24 hours a day from Thursday 27th – Sunday 30th of January 2022.

Course Crew

- the course crew will register in the morning at the volunteer’s tent which is next to the DSLV-Haus
- they are divided into small groups and must not mix, i.e. they must avoid any contact with other groups
- obligation to wear a FFP2-mask and keep your distance

Media

On-Site

- a FFP2-mask must be worn in all accredited areas, whether indoors or outdoors
- keep your distance of 1,5 meter
- media representatives are required to restrict their movements as far as possible and not to leave the BLUE zone
- media has no access to the competition areas or the team areas and no direct contact to the athletes
- in the Mixed Zone a minimum of 1,5 meters has to be kept
- during the event, all interviews must be conducted in the Mixed Zone
- all microphones should be covered with a disposable plastic foil, which is replaced after each interview
- the microphone is reserved exclusively for the athlete, journalists should not speak into the same microphone

Transportation

- media representatives should use their own vehicles
- there are parking spaces next to the event area (BLUE)

Accreditation & Press Office

- all journalists must register on the FIS PASSPORT page and upload their valid PCR entry test, not older than 48 hours before arrival
- they have to answer the Daily Health Questionnaire at the FIS Passport
- only if the negative PCR test result is uploaded and the Daily Health Questionnaire is filled in, the accreditations are handed out at the Kongresszentrum
 - o Homepage: <https://fispasport.fis-ski.com/fis>
- each journalist is assigned a workstation at the DSLV-Haus that remains the same throughout the entire race week
- the workplaces are disinfected daily
- toilets are cleaned and disinfected regularly
- obligation to wear FFP2-masks which can be removed at the workstation
- keep a minimum distance of 1,5 m - tables are set up considering the minimum distancing rules
- food will be served

It is the responsibility of every person to adhere to this policy!!!

Press Conferences

- there won't be any press conference

TV-Cabins

- each member of this group must also submit a negative PCR entry-test not older than 48 hours via the FIS online PASSPORT system
- there will be a separate entrance into the event site
- max. 2 persons per cabin
- please follow the signage
- obligation to wear FFP2-masks

Photo Zones

- a FFP2-mask must be worn during the whole time
- please observe the distancing rules, also outdoors
- photographers are not allowed to enter the finish area to take pictures of the award ceremony
 - o therefore, the podium will be rotated so that pictures can be taken directly from the photographers' stand in the finish area

Award Ceremony at the finish area

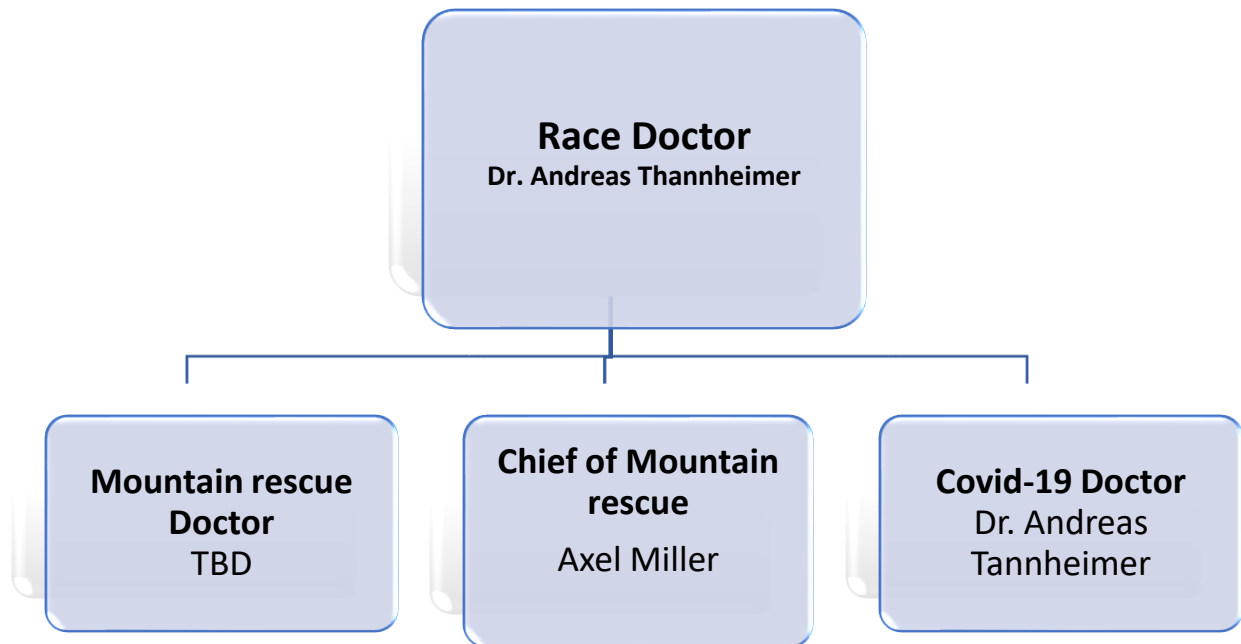
- the official award ceremony will be held immediately after the race and only the podium (1st, 2nd, 3rd) will be awarded
- athletes enter from the fenced areas
- the trophies are on the podium
- the athletes will leave the award ceremony following the RED way out of the Mixed Zone to the TV-Compound
- FFP2-masks must be worn during the entire ceremony
- avoid shaking hands and keep your distance
- follow the signage and stay in your assigned zones only
- observe the general safety and hygiene measures

Medical care

Principle

It is the responsibility of the medical department of the LOC to make sure that all participants of the Kandahar Races should have every medical support needed. Primarily this applies to the athletes on and off the slope, as well as to everyone else involved during the races.

Medical Organization Chart



Description of local hospitals in case of medical treatment

Klinikum Garmisch-Partenkirchen

Further details:

- Auenstraße 6, 82467 Garmisch-Partenkirchen
- Tel. 0049-8821-770
- Flight Time 2 min from racetrack
- Driving Time 10 min from racetrack
- 500 beds with 20 intensive care beds
- Level 2 Traumacenter- MRI 12/7 - general surgery- vascular surgery- thorax surgery- endoscopy 24/7- heart catheter 24/7- CT24/7-, blood bank.

BG Unfallklinik Murnau

Further details:

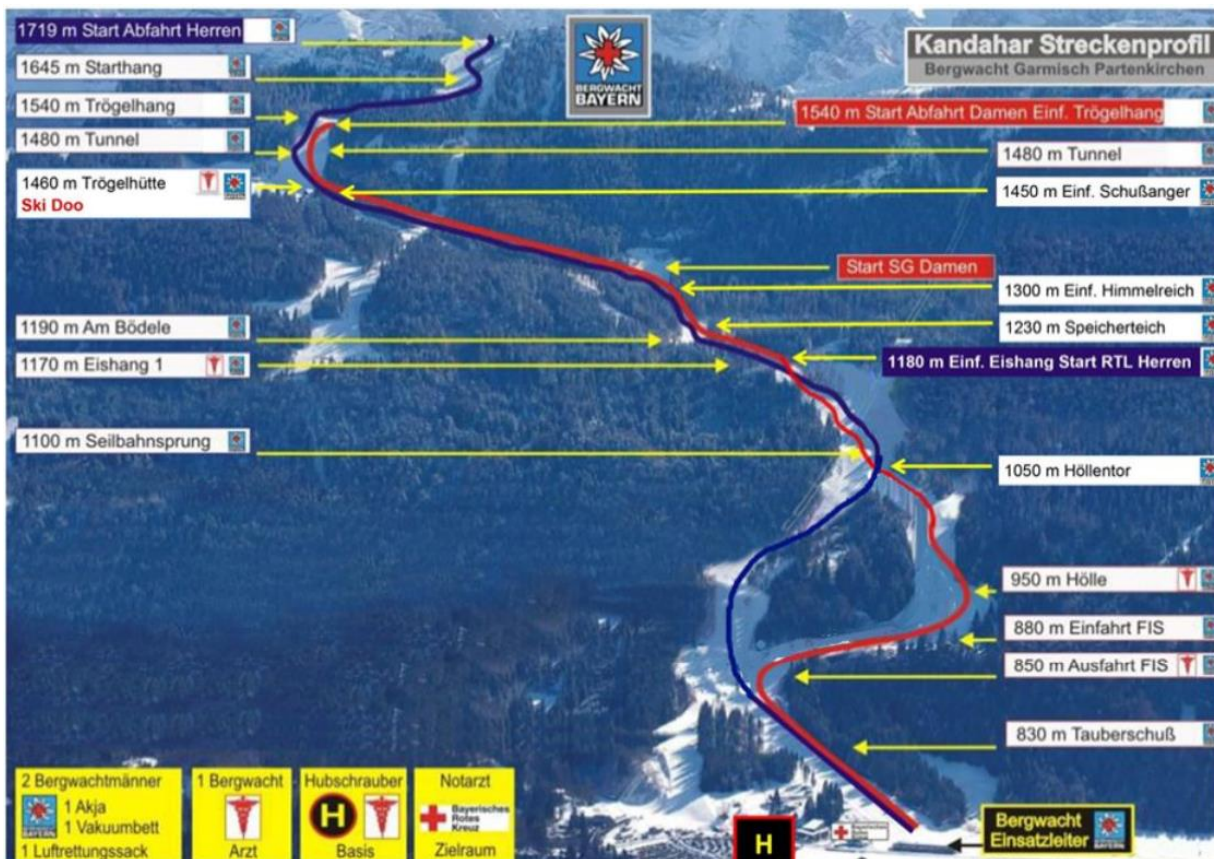
- Professor-Küntschers-Straße 8, 82418 Murnau am Staffelsee
- Tel 0049-8841-480
- Flight time 10 min from racetrack
- Driving Time 30 min from racetrack
- 1000 beds with 40 intensive care beds
- Level1 Traumacenter-CT24/7– neurosurgery – burning unit - endoscopy 24/7 -heart catheter 24/7, blood bank.

Doctor's Meeting

According to the daily program there is going to be a doctor's meeting at the Kreuzeckhaus.



First aid posts



Mountain rescue service (Bergwacht)

We are providing up to 30 persons of the mountain rescue staff. Members of this workforce are the first attendees during the races. They are all qualified, experienced professionals who have undergone annual refreshing courses. During the races, the staff has the following equipment at their disposal:

- resuscitation equipment: oxygen, semi-automatic defibrillator (SAD)
- immobilization equipment: limb splints, cervical collars, vacuum mattresses
- transport equipment: sledges, vacuum-mattresses, and skidoos
- communication equipment: radio telecommunication system, mobile phones
- The Chief of Mountain rescue is located in the finish area and has access to the uncut TV Source and is directly linked with the Jury and the race doctor

Emergency doctors

We are providing up to 6 emergency doctors. They are all qualified and experienced mountain emergency doctors. A lead doctor will be designated to ensure medical coordination.

The number and distribution of doctors on the track and around the site are shown on the map above. The emergency doctors will be present during the competitions as well as during the official training sessions.

Communications

The entire medical team is equipped with a radio telecommunication system with a special frequency. Additional communication will be done by mobile phones.

The race doctor, Dr. Andreas Thannheimer, is in close contact with the emergency doctors, the rescue staff, the jury and the hospitals.

Helicopter



A complete equipped twin-turbine H-145 rescue helicopter, fitted with a winch, is dedicated to rescue the competitors. During the race, the helicopter will be stationed next to the finish area. This helicopter is exclusively booked for the Kandahar Races.

It is equipped with an emergency doctor. In case we have an evacuation from the slope, this doctor will stay with the racer in the helicopter. That way we ensure, that we don't have a loss of doctors manpower on the track.

The „ARA Flugrettung“ helicopter also has a NVIS (night vision) system. Just in case an injured ski-racer would need a second helicopter transportation, after the first medical survey in our hospitals, it will be possible.

Description of first aid protocols

General principles

In the context of injuries occurring during warm up, official training sessions and competitions:

- The chief of race ensures that the track is clear and gives the go-ahead for the rescue staff to intervene

---- Start Stop ----

- The rescue staff is the first to intervene, making an initial assessment and transmitting it to the chief of mountain rescue, who is in contact with the Race doctor and the jury. The rescue staff will carry out first aid. The chief of mountain rescue decides whether a doctor should intervene on the track or not.
- If a doctors intervention is necessary, the emergency doctor oversees the therapeutic management and transmits a second report. The emergency doctor will escort the patient until secondary transfer.
- The Race doctor, Dr. Andreas Thannheimer will choose - in collaboration with the chief of mountain rescue - the most appropriate way of evacuation and destination for the patient
- Most likely this is going to be the Klinikum Garmisch-Partenkirchen (flight time: only 2 minutes)
- In case there is a helicopter evacuation, a medical spare equipment is provided at the Heli Pad of the Klinikum Garmisch-Partenkirchen
- On this case we ensure the helicopter is immediately ready to be used again and can return to the racetrack in a proper time shortly after offloading the patient at the Heli Pad.
- During race days there is one experienced trauma surgeon exclusively booked for the athletes and staff of the Kandahar races at the Klinikum Garmisch-Partenkirchen.

Team doctors

- They may approach to their injured racers after the track has been closed and the attending rescue staff has given permission.
- They may intervene but only if asked by and under the responsibility of the organizing medical staff present.
- They may not accompany their evacuated patient, unless the emergency doctor and the helicopter crew consider it as a special circumstance.
- If any injury occurs after the race, training or warm-up, the teams have to inform Dr. Andreas Thannheimer, to complete the injury form for FIS ISS.

Outside Competition

For **any** medical problem or question occurring outside the competition, warm-up or training track, please do not hesitate to contact the race doctor Dr. Andreas Thannheimer any time, unless it is an emergency situation.

For any emergency situation outside the competition, warm up or training, please contact 112 immediately to get connected to the local Medical Rescue System (Rotes Kreuz).