

HYGIENE CONCEPT, MEASURES AND PROCEDURES

FIS Ski Jumping World Cup

Titisee-Neustadt 21.01. – 23.01.2022



Millora Consulting GmbH
Gutachstrasse 34 A, 79822 Titisee-Neustadt

E-Mail: info@millora.de



Table of Contents

1. INTRODUCTION	2
2. RESPONSIBILITIES	3
2.1. ORGANIZER.....	3
2.2. COVID-19/HEALTH COORDINATOR.....	3
2.3. ORGANIZING COMMITTEE.....	3
2.4. LOCAL HEALTH AUTHORITY	3
3. FRAMING	4
3.1. COVID-19/ SARS-CoV-2.....	5
4. BASIC RULES AND REGULATIONS	6
4.1. PERSONAL INFORMATION	6
4.2. ACCREDITATION/PARTICIPATION QUALIFICATIONS.....	6
4.3. PCR - TESTING	7
4.4. TRAVEL REGULATIONS	9
5. HYGIENE MEASURES AND OPERATING MEASURES	10
5.1. CORE HYGIENE MEASURES	10
5.2. SPECIAL HYGIENE MEASURES AND PROCEDURES.....	12
5.2.1. Accommodations.....	12
5.2.2. Groups and Safety Zones.....	14
5.2.3. Event Specific Processes	21
5.2.4. Room Descriptions and Capacities	24
5.2.5. Signage, Directional Markers	28
5.2.6. Catering	29
5.3. CLEANING/DISINFECTION	30
5.3.1. Restrooms/Toilets/WC	30
5.3.2. Organizational, Lounge and Common Areas.....	30
6. COMMUNICATION	32
6.1. WHAT TO DO IN THE EVENT OF INFECTION/SUSPECTED INFECTION WITH SARS-COV-2.....	32
6.2. COMMUNICATION PROCESS IN CASE OF INFECTION/SUSPECTED INFECTION WITH SARS-COV-2	34
7. APPENDICES	35



1. INTRODUCTION:

*Sport, in times of a pandemic –
Guidelines for improving safety and health during training, sporting events and competitions for athletes, teams, and participants.*

The Corona Pandemic (SARS-CoV-2) continues to impact people across all areas of life without prejudice. The dynamic course of the SARS-CoV-2 pandemic continues to threaten countless numbers across the globe. It remains a serious threat to public safety, civil order and continues to have a significant impact on daily life.

Safely organized sporting events have served as a positive role model for the organization and implementation of other events and gatherings across all sectors of society. It is, therefore, extremely important that a responsible implementation of existing guidelines, ordinances and laws be strictly adhered to.

The hygiene rules and procedural measures described below aim to ensure the greatest possible protection against infection during the sporting event. The health and safety of all those involved in the event (athletes, trainers, officials, staff, guests) is of utmost importance.

*Millora Consulting GmbH
Gutachstrasse 34 A
79822 Titisee-Neustadt*

2. RESPONSIBILITIES

Administrators and the Local Organizing Committee are responsible for not only event coordination, but also to ensure that the following hygiene measures are adhered to. The COVID-19/Health Coordinator plays a key role in this task. The Health Coordinator will plan, control, and document the implementation of and compliance with the specified hygiene rules and process measures. They are the contact and interface person between local health authorities and organizers.

2.1. Organizer

<i>FIS</i>	<i>Fédération Internationale de Ski</i>
<i>Titisee-Neustadt</i>	<i>Stadtverwaltung Titisee-Neustadt Weltcup Büro Pfauenstraße 2 79822 Titisee-Neustadt Tel.: +49 7651 972412</i>

2.2. COVID-19/ Health Coordinator

<i>Rainer Büche Certified Disinfecter</i>	<i>Tel.: +49 (0)171 - 5334756 E-Mail: info@millora.de</i>
<i>Michelle Büche Alt. COVID-19 Health Coordinator</i>	<i>Tel.: +49 (0)152 -53779898</i>

2.3. Organizing Committee

<i>Local Organizing Committee (LOC)</i>	<i>Meike Folkerts (President) Egon Hirt (Deputy President)</i>
	<i>Joachim Häfker (Secretary General) Tel.: +49 (0)170 – 8391189 E-Mail: generalsekretaer@weltcupskispringen.com</i>

2.4. Local Health Authority

<i>Health Department LK Breisgau-Hochschwarzwald</i>	<i>Landratsamt Breisgau-Hochschwarzwald Fachbereich Gesundheitsschutz Sautierstraße 30 79104 Freiburg i. Breisgau Tel.: +49 761 21873212</i>
--	--

3. FRAMING

The need for special hygiene rules and measures has arisen out of the current prevailing pandemic situation (SARS-CoV-2).

All measures and recommendations are based upon current scientific research and legal requirements.

The information, publications, and recommendations of the Robert Koch Institute (RKI) and the World Health Organization (WHO) are scientific sources upon which the guidelines are based. Additionally, national ordinances and laws related to the SARS-CoV-2 pandemic serve as the foundation for the guidelines and measures.

Scientific References:

Robert Koch Institut (RKI):

https://www.rki.de/DE/Content/InfAZ/N/Neuartiges_Coronavirus/Steckbrief.html

World Health Organization (WHO):

https://www.who.int/health-topics/coronavirus#tab=tab_1

Legal Requirements:

Infektionsschutzgesetz (IFSG)

Corona Verordnung des Landes Baden-Württemberg (CoronaVO BaWü)

Corona Verordnung Sport Baden-Württemberg (CoronaVO Sport)

Guidelines:

Leitlinien Infektionsschutz

Sportart- und verbandspezifische Maßnahmen und Empfehlungen zum Infektionsschutz für den Deutschen Skiverband e.V.

Hygiene Standards

Hygiene Standards; Allgemeingültige Regelungen des Deutschen Olympischen Sportbundes (DOSB)

FIS Covid-19 Prevention Guidelines



3.1. COVID-19/ SARS-CoV-2

Current and up-to-date information with respect to the COVID-19 virus, virus variants and illness related topics can be found on the homepage of the Robert Koch Institutes (see link below).

All participants are required to educate themselves about COVID-19 symptoms, viral spread, and risk of contracting a COVID-19 related illness.

The following link provides current information:

[RKI - Coronavirus SARS-CoV-2 - Epidemiologischer Steckbrief zu SARS-CoV-2 und COVID-19](#)

4. BASIC RULES AND REGULATIONS

1. Without exception, no visitors, spectators, or guest will be permitted onsite during the Viessmann FIS Ski Jumping World Cup event (January 21th – January 23th, 2022) This restriction includes all components of the event, including training sessions, qualifications and official ski jumping competitions.
2. Only registered and accredited individuals may take part in the event or enter the event grounds. Each participant must be assigned to one of the groups defined under *point 5.2.2 Groups and Safety Zones*.
Note: All event participants must fulfill the requirements as listed in 4.2 below.
3. The use of FFP-2 masks is mandatory for all individuals entering the event site.
4. Any individual showing ANY symptoms consistent with a COVID-19 infection, must isolate immediately. Persons presenting with suspicious symptoms will be denied access to the event site. The COVID-19 Health Coordinator is to be informed immediately should any suspicion for a COVID-19 infection arise.
5. The local organizer strives to keep the number of groups and the number of group members as small as possible (to minimize risk). Only necessary staff/helpers will be accredited.
6. The organizer will provide staff/helpers with the necessary personal protective equipment (mouth/nose protection, gloves, protective suits) and in sufficient numbers for the event duration (including additional backup).
7. An **absolute ban** on the serving or consumption of alcoholic beverages will be in place for the duration of the sporting event. Without exception, persons who are recognizably intoxicated will be prohibited from entering the event site.



4.1. Personal Information

Contact information for all participants, helpers, organizers, and other attendees must be presented to gain accreditation and entrance to the event grounds. Contact information is necessary to trace potential contacts in the event of a positive tests.

The contact details will be obtained as part of the accreditation process and will be handled in accordance with the “*Datenschutz-Grundverordnung*“(DSGVO).

The recorded data will be destroyed after 4 weeks.

Note: Individuals refusing to provide contact information will not be accredited and access to the event site will be denied.

4.2. Accreditation/ Participation Requirements

Only fully vaccinated or recovered individuals (as defined by current German laws and regulations) will be granted accreditation. Proof of vaccination or certification of prior COVID-19 infection must be uploaded to the electronic FIS Pass prior to accreditation.

Note:

“Recovered individual “. Currently defined as: individuals with PCR-Test confirmed infection older than 28 days but not older than 6 months. (Source: Robert Koch Institut, 07.01.2022)

4.3. PCR-Test

Individuals possessing a FIS Pass and individuals belonging to one of the following groups are required to present a negative PCR-Test to obtain accreditation (regardless of vaccination or recovery status). See point 4.2 for further information.

The PCR-Test must have been carried out no more than 72 hours prior to accreditation.

The PCR-Test result must be loaded into the electronic FIS-Pass prior to receiving accreditation.

FIS

- Functionaries
- Referees/ Judges

Personnel

- Local Organizing Committee (LOC)
- Covid-19/Health Coordinator

Team

(Athletes/ support staff)

- Athletes
- Coaches
- Medical support staff
- Sports Directors
- Technical staff
- Press Officers

Media

- Print - Media
- TV – Media
- Media Consultant (LOC)

Additionally, any persons who are anticipated to have close contact with individuals from the above mentioned groups will also be required to present a negative PCR-Test.*

The LOC and the COVID-19 Health Coordinator will define which individuals or groups will be expected to provide a negative PCR-Test.

The PCR-Test must have been carried out no more than **48 hours** prior to accreditation.

* *Individuals expected to be in close contact (<1.5m) for longer than 15 min. at a time.*

Additional helpers and staff, who can maintain the safe distance contact restrictions, and fulfill the requirements as listed in 4.2 will be exempt from PCR-Testing but will be required to perform a daily supervised Antigen test. Supervisors will be properly schooled and certified in the testing process.

HYGIENE CONCEPT, MEASURES AND PROCEDURES

FIS Ski Jumping World Cup
Titisee-Neustadt 21.01. – 23.01.2022



In the event of a suspected Covid-19 infection, the Covid-19 Health Coordinator will coordinate, in conjunction with the local health authority any additional course(s) of action. In the event of a positive PCR test result or onset of symptoms please contact the following for further information and guidance immediately.

PCR testing will be available on site in the event of a suspected infection.

Contact Person	Contact Information
Rainer Büche <i>Covid-19 Health Coordinator</i>	<i>Tel: +49 (0)171 - 5334756</i> <i>E-Mail: info@millora.de</i>
Health Department <i>LK Breisgau Hochschwarzwald</i>	<i>Landratsamt Breisgau-Hochschwarzwald</i> <i>Fachbereich Gesundheitsschutz</i> <i>Sautierstraße 30</i> <i>79104 Freiburg i. Breisgau</i> <i>Tel.: +49 761 21873212</i>

4.4. Travel Regulation

National border entry and exit regulations remain in effect, please refer to the following for status and recommendations.

The following applies to travellers entering Germany

as of 1 August

		Digital entry registration	Negative test	Quarantine
Not a risk area	Vaccinated/recovered	no	no	no
	Not vaccinated	no	yes	no
	Children aged under 12	no	no	no
High-risk area	Vaccinated/recovered	yes	no	no
	Not vaccinated	yes	yes	10 days*
	Children aged under 12	yes	no	5 days
Virus variant area	Vaccinated/recovered	yes	yes	14 days
	Not vaccinated	yes	yes	14 days
	Children aged under 12	yes	no	14 days

*can be cut short after 5 days

© Bundesregierung

Please note: Certain exceptions to the above rules and regulations are in place for world class athletes traveling to and from international sporting events. Given the fluidity of the current situation and accounting for the frequent status changes we recommend that all individuals wishing to enter Germany from abroad inform themselves as to their individual requirements in a timely manner.

The following links serve as current information sources:

<https://www.bundesregierung.de/breg-de/themen/coronavirus/faq-reisen-1735032>

<https://www.bundesgesundheitsministerium.de/coronavirus/infos-reisende/faq-tests-einreisende.html>

5. HYGIENE MEASURES AND OPERATING MEASURES

The following points are essential to ensure the safe execution of the event!

Every person taking part in the sporting event (incl. athletes, trainers, officials, logistical staff, media representatives and volunteers) is to be informed and instructed in advance regarding the rules/requirements/measures being taken to ensure compliance.

Due to the current dynamic course of the pandemic and considering the possibility of new scientific findings, all measures and regulations described/taken must be reevaluated regularly and adjusted, as necessary.

Regular contact and coordination with local authorities (e.g., health department) is imperative, as local infection rates may make it necessary to adapt measures.

5.1. Core – Hygiene Measures

Mouth/Nose protection



- FFP-2 masks are required across the entire event site at all times.
- The mouth/nose protection must be worn **at all times** and **for the duration** of the event.


Exceptions:

1. Mouth/nose *protection* may be briefly removed while drinking and/or eating.
2. Athletes may remove masks during the direct execution of their sport in the field of play.

HYGIENE CONCEPT, MEASURES AND PROCEDURES

FIS Ski Jumping World Cup
Titisee-Neustadt 21.01. – 23.01.2022



<p>Distance</p> 	<ul style="list-style-type: none">• A minimum distance of 1.5 meters must be observed.• Direct contact e.g., shaking hands, hugging, as well as unnecessary skin and body contact should be avoided.• Gatherings of groups in enclosed spaces should be limited to short periods of time.
<p>Follow coughing and sneezing etiquette</p> 	<ul style="list-style-type: none">• Sneeze or cough into the crook of your arm or a handkerchief, keep your distance from those around you.• Dispose of the tissue properly in a garbage can.
<p>Hand Hygiene</p> 	<ul style="list-style-type: none">• Wash hands regularly and thoroughly with soap and water.• Wash for at least 20-30 seconds• Avoid touching your mouth, nose, or eyes with your hands.
<p>Hand disinfection</p> 	<ul style="list-style-type: none">• Disinfect hands with an appropriate hand sanitizer, before entering or leaving rooms and at all entrance points. <p>Note: <i>Hand sanitizer dispensers will be provided throughout the entire event site (see point 5.2.5.)</i></p>
<p>Ventilation</p>	<ul style="list-style-type: none">• Ventilate rooms/enclosed areas regularly and adequately.



5.2. Special Hygiene Measures and Procedures

Certain participants, helpers and staff are subject to additional measures in addition to those listed in *point 5.1. Central hygiene measures*. These persons/groups must observe and adhere to these additional hygiene regulations/special measures.

Participant and working groups will be clearly defined, their special hygiene measure and procedure clearly listed and described below.

The event site is divided into **-Safety Zones-**. Entry into these zones is determined by the “Group” to which and individual is assigned.

For enclosed spaces, a “maximum occupancy” shall be defined and clearly posted.

Additional event procedures and measure are listed and defined in the following sections.

5.2.1. Accommodations

Hotels and other accommodations are to follow all national guidelines as well as those of the **Corona Ordinance of the State of Baden-Württemberg** (CoronaVO BaWü) and the **German Hotel and Restaurant Association** (DEHOGA Federal Association).

The applicable hygiene and protective measures must be implemented and adhered to by the hotels and accommodation providers.

When possible, the following FIS accommodation recommendations should be observed and adhered to:

Accommodations:

HYGIENE CONCEPT, MEASURES AND PROCEDURES

FIS Ski Jumping World Cup
Titisee-Neustadt 21.01. – 23.01.2022



- *Team members accommodated on the same floor.*
- *Access to hotel facilities via stairway (to avoid elevators).*
- *Try to separate team members from other hotel guests.*
- *Rooms with 2 twin-beds rooms preferred, separate beds to maximize distance.*
- *If possible, provide a separate entry to hotel/accommodation.*
- *Additional cleaning/disinfection prior to arrival and during the stay.*
- *Additional hand sanitizers and paper towels throughout the accommodation, including the rooms.*
- *Avoid cleaning rooms when occupied by team members (to avoid unnecessary contact).*
- *Provide for a possible “isolation room”.*
- *Establish rules for the use of joint facilities (gym, meeting rooms) always keeping adequate ventilation in mind.*

Meals:

- *Separate dining rooms/dining areas away from other hotel guests.*
- *Avoid unnecessary contact between staff and team members by preparing the dining areas before the arrival of team members.*
- *Place water/drinks on the tables prior to arrival of team members.*
- *Clean the table and remove dishes after an entire table has left, not during the meal.*

Origin: FIS Covid-19 Prevention Guidelines_Point 8. Accommodation & Meal Services



5.2.2. Groups and Safety Zones

Groups

Team

(Athletes and support staff)

- Athletes
- Coaches
- Medical support staff
- Sports Directors
- Technical staff
- Press Officers

FIS

- Functionaries
- Referees/ Judges

Media

- Photographers
- Print - Media
- TV – Media
- Media Consultant (LOC)

Personnel

- Local Organizing Committee (LOC)
- Covid-19/Health Coordinator
- Swiss Timing
- WADA (Anti-doping agency)
- Accreditation service

Volunteers/ Service Providers

- Ski-Jump Hill Team
- Start Area Squad
- Hill Packers Squad
- Inrun Maintenance Squad
- Distance Markers
- Shuttlebus-Drivers
- Catering staff
- Cleaning staff

Security

- Emergency Medical Staff
- Fire brigade
- Police

HYGIENE CONCEPT, MEASURES AND PROCEDURES

FIS Ski Jumping World Cup
Titisee-Neustadt 21.01. – 23.01.2022



The event site will be divided into **-Safety Zones-**. The **- Safety Zones-** are defined by a color system. The color system is based on the graphic provided by the Deutscher Skiverband e.V. (*guidelines for infection protection*).

The **- Safety Zones-** are designed in such a way as to minimize unnecessary contact between groups.

All distance and hygiene rules as described in point 5.1. *Core Hygiene Measures* must be observed within the **- Safety Zones-**

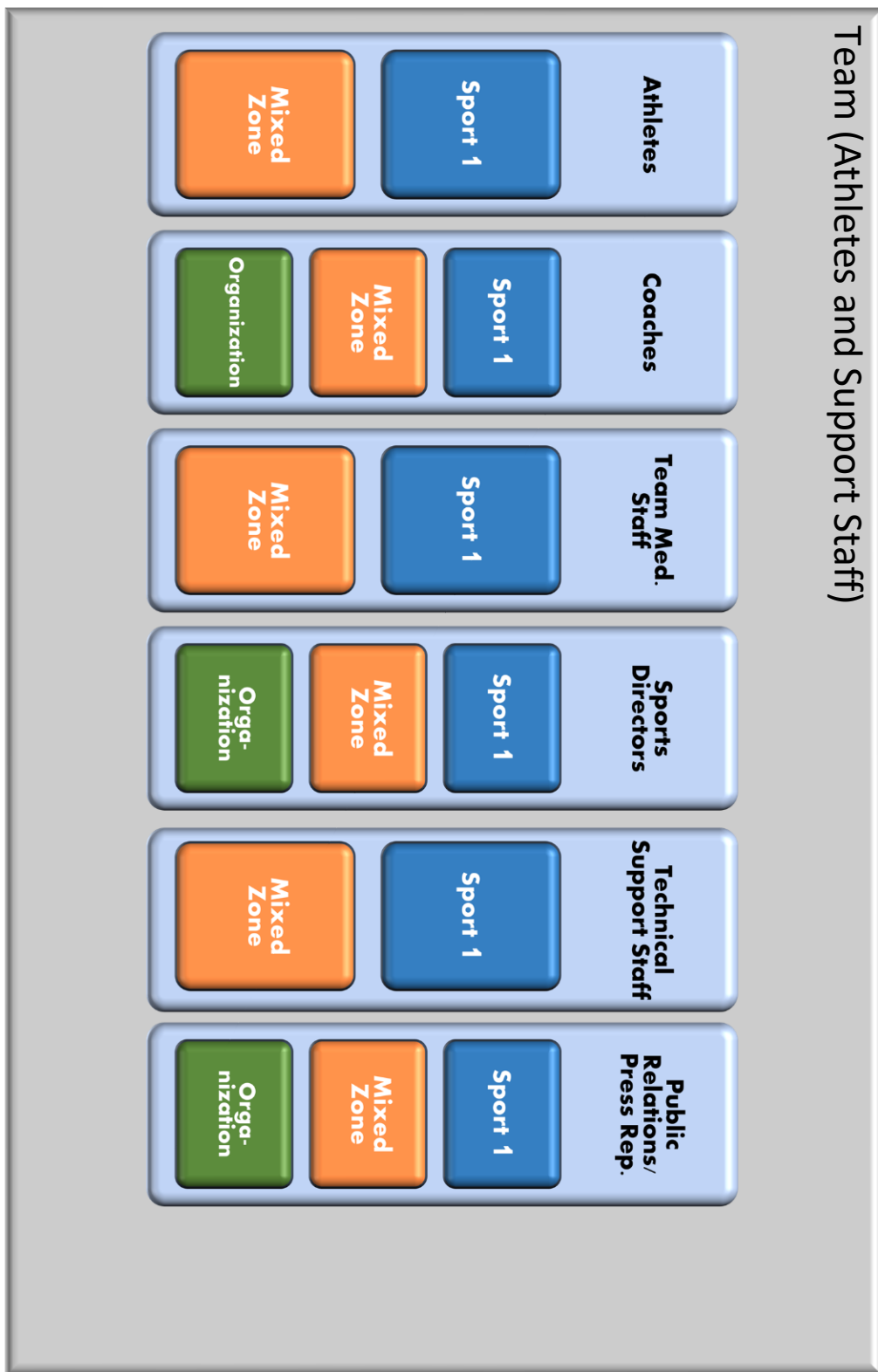
Additionally, the information in point 5.2.3. *Event Specific Processes* shall be noted and implemented.

All **- Safety Zone-** entrances will have signs clearly indicating which Groups are authorized to enter the area.

Appendix 2: Location map_Ski Jumping World Cup_TN

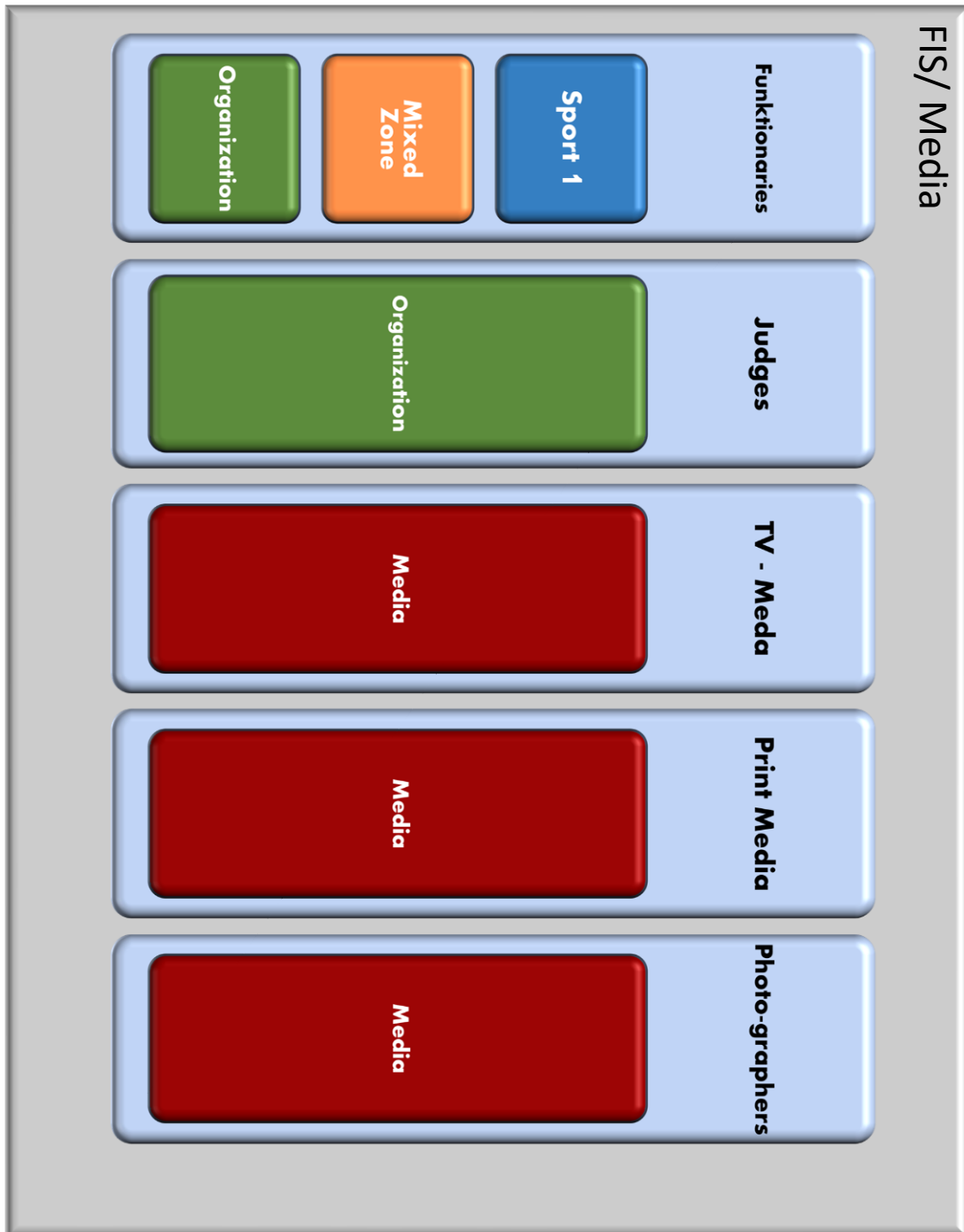
Appendix 3: Access authorization zones_Ski Jumping World Cup_TN

Sport 1 <u>Area:</u> Athlete Village Catering "Sport" Warm-up Area Race Office Ski Jump – Start area Coaches Platform	Sport 2 <u>Area:</u> Ski Jump – landing area	Media <u>Area:</u> Media Center (Organization Building- ORGA) TV- Media Area Interview Area Photographers - Area
Mixed Zone <u>Area:</u> Exit Gate	Organization <u>Area:</u> Organization Building (ORGA) Referee Tower	Catering <u>Area:</u> Catering Sport Catering ORGA-Building Catering "Schützenhaus" Catering "Naturfreunde- Haus"



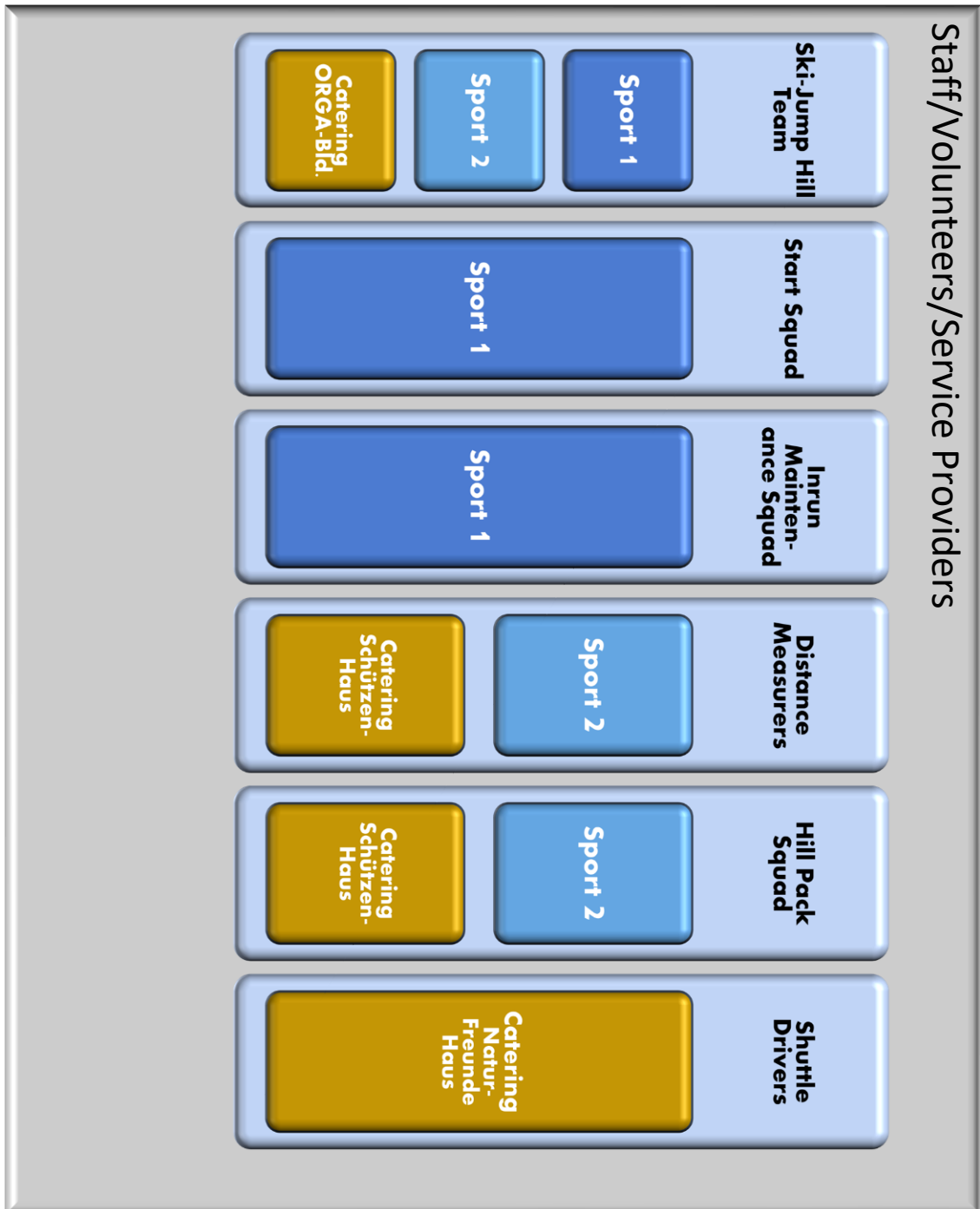
HYGIENE CONCEPT, MEASURES AND PROCEDURES

FIS Ski Jumping World Cup
Titisee-Neustadt 21.01. – 23.01.2022



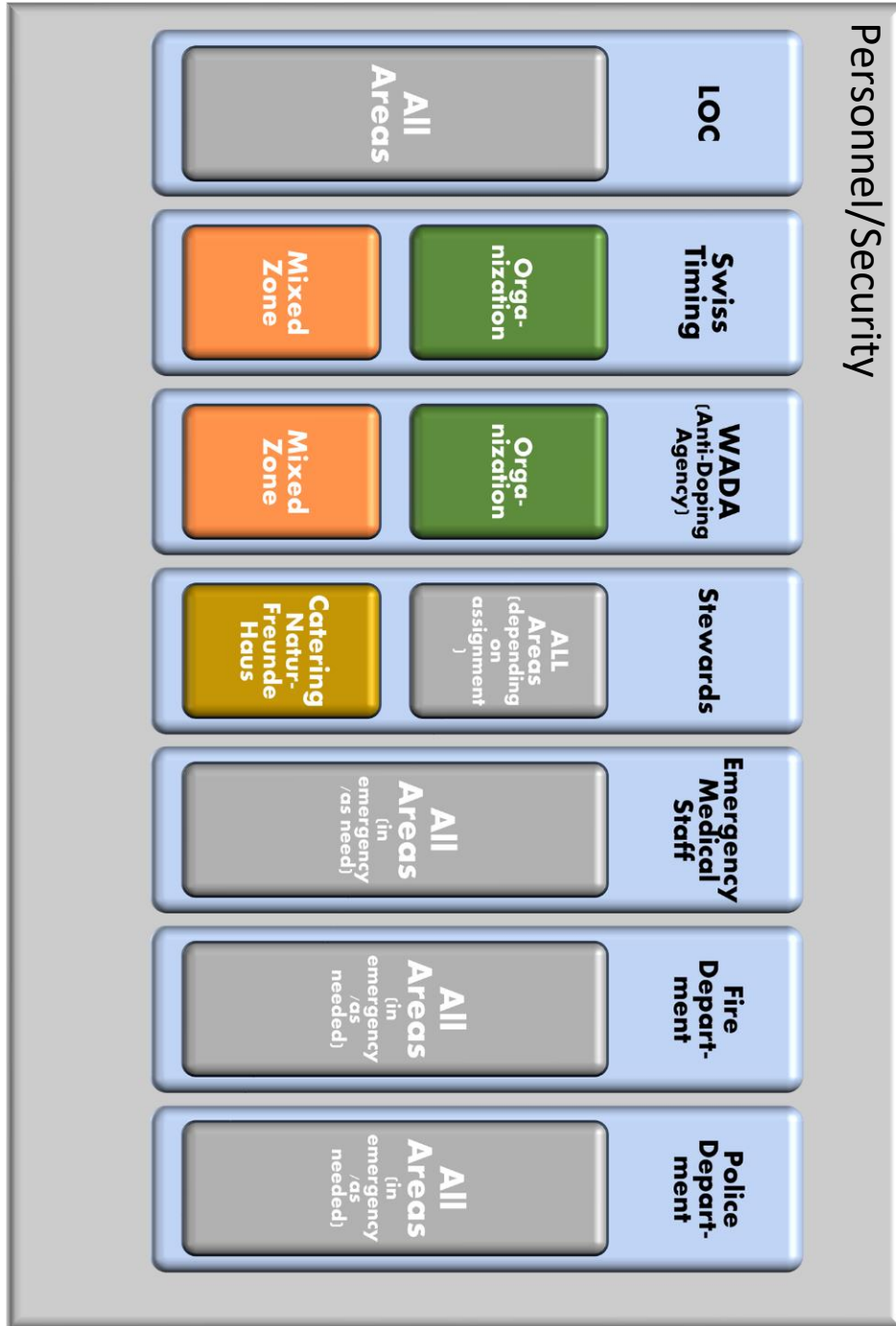
HYGIENE CONCEPT, MEASURES AND PROCEDURES

FIS Ski Jumping World Cup
Titisee-Neustadt 21.01. – 23.01.2022



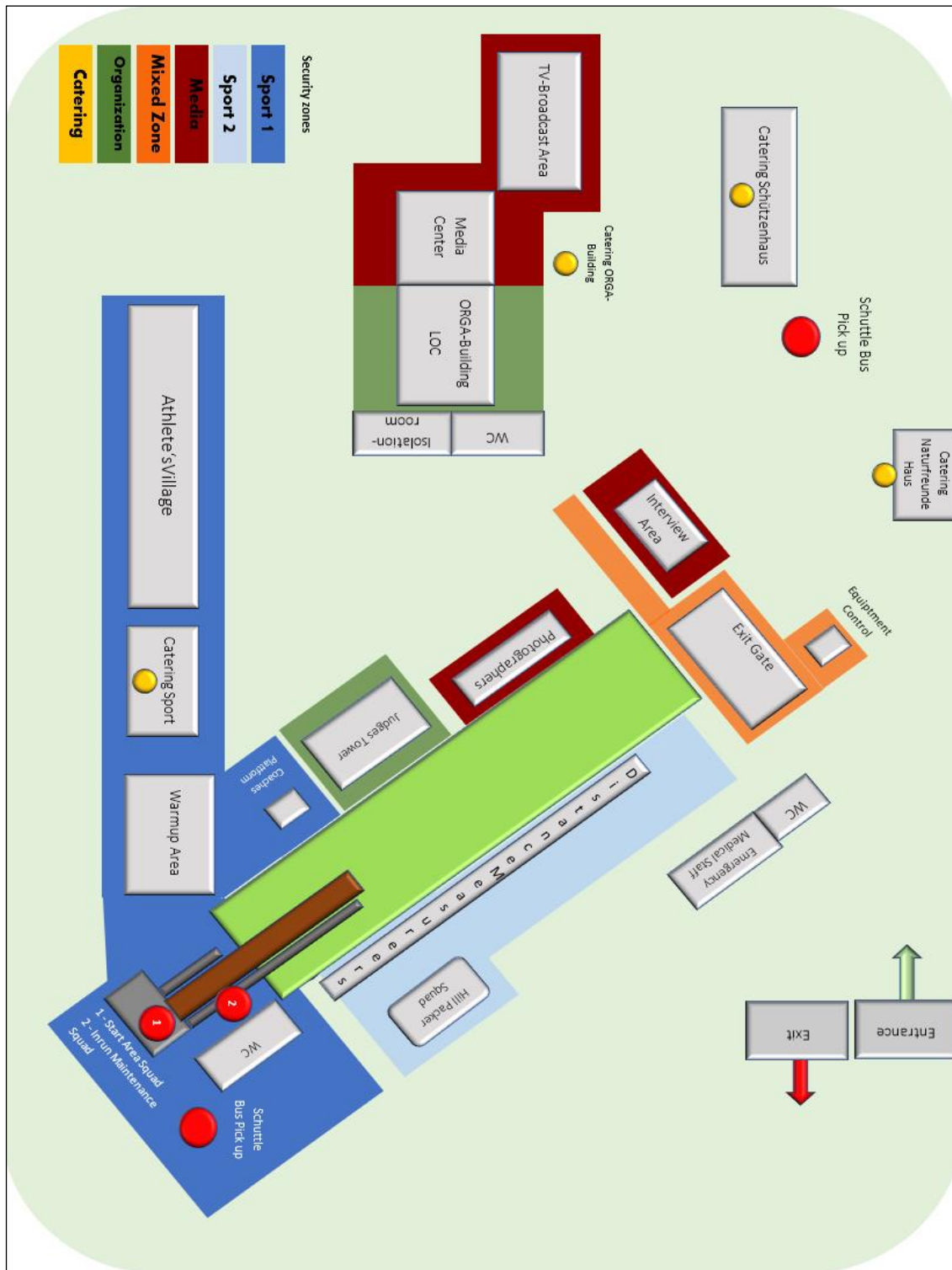
HYGIENE CONCEPT, MEASURES AND PROCEDURES

FIS Ski Jumping World Cup
Titisee-Neustadt 21.01. – 23.01.2022



HYGIENE CONCEPT, MEASURES AND PROCEDURES

FIS Ski Jumping World Cup
Titisee-Neustadt 21.01. – 23.01.2022



5.2.3. Specific Event Processes

The following describes the hygiene and process measures for the various event locations and event groups.

Entrance/Exit areas

- Separate entrance and exit areas will be created to minimize to contact between persons entering and/or exiting the event site.
- Entrance and exit will be clearly marked with signs and visible path markings.
- Event organizers will assign designated arrival time windows for specific groups (team/officials/staff/helpers) to avoid unnecessary contact between arriving groups.
- Appropriate, visible distance markers will be placed at the entrance area.
- Entrance Control:
 1. Access to the event site will to be controlled by Event Staff. A partition wall will separate staff from those entering the site.
 2. The event area may only be entered by persons with a valid accreditation. An accreditation pass must be presented to gain admission to the event site.
 3. Upon entering the event site, appropriate mouth/nose protection must be put on.
 4. After admission, each person must go directly to their designated "Group" area following the correct walking path markers. The walking path markers (*see point 5.2.5.*) must be followed appropriately.

HYGIENE CONCEPT, MEASURES AND PROCEDURES

FIS Ski Jumping World Cup
Titisee-Neustadt 21.01. – 23.01.2022



Accreditation	<ul style="list-style-type: none">• Event accreditation badges will be issued to authorized persons prior to event begin. Groups (see <i>point 5.2.2</i>) will designate a representative to obtain accreditation badges for the entire group. Groups are responsible for distributing their badges among their members.• The accreditation office will be located in the Fire Station-Titisee-Neustadt, Gutachstrasse 9.
Start Number Issue	<ul style="list-style-type: none">• Start numbers will be given to an authorized person (trainer) of the respective athletic team. They will in turn distribute the start numbers to their athletes.• After use, start numbers will be collected and returned by the authorized team member in a closed bag.
Shuttle -Bus-Traffic	<ul style="list-style-type: none">• Shuttle drivers must wear an FFP-2 mask (<i>without valve</i>) when transporting guests.• <u>Transport capacity:</u> Car: max. 2 passengers with FFP-2 mask (<i>without valve</i>). Minibus: max. 6 passengers with FFP-2 masks (<i>without valve</i>)• The passenger side is not occupied with passengers.• When possible, ventilate vehicles often (even during transport).• Vehicles are to have all contact surfaced disinfected at the end of the day.
Start Area Ski Jump	<ul style="list-style-type: none">• After leaving the warm-up room, the athlete may remove their mouth/nose protection.• Appropriate 1.5m distances must be observed. Distance markers and information signs will be clearly posted.• If the 1.5m distance rule cannot be maintained around an unmasked athlete, staff, volunteers, and other event participants will be required to wear FFP-2 <i>without valve</i> (e.g., Start Command).• Personnel performing the pre-jump equipment check must wear an FFP-2 mask (<i>without valve</i>) and gloves.

HYGIENE CONCEPT, MEASURES AND PROCEDURES

FIS Ski Jumping World Cup
Titisee-Neustadt 21.01. – 23.01.2022



Ski Jump Landing Area	<ul style="list-style-type: none">• Only the athlete and a designated TV Media Representative may be in the ski-jump landing area.• The TV media representative must ensure that the minimum distance 1.5m is always maintained. <p><u>Exceptions:</u></p> <ol style="list-style-type: none">1. In the event of an accident or a medical emergency, the Emergency Medical Staff and/or the athlete's medical support staff may enter the ski-jump landing area.2. To prepare the landing Zone, the step command/technical staff may enter the ski-jump landing area, if they remain in compliance with the 1.5m distance regulation.
Exit Gate <i>(Mixed Zone)</i>	<ul style="list-style-type: none">• After completing the jump and entering the Exit Gate Area the athlete must wear a mouth/nose protection.• Personnel performing the post-jump equipment check must wear an FFP-2 mask (<i>without valve</i>) and gloves.
Interview-Area <i>(Mixed Zone)</i>	<ul style="list-style-type: none">• The interview area will be constructed such that athletes and media representatives maintain 1.5m distance.• Recognizable separations and markings between the media representatives and the athletes (public relations representative/press officer) will be installed and posted.• Areas for athletes and media representatives will be clearly marked and posted. <p>Note: For TV media representatives, the rules, and regulations of the concept Regulations for Broadcaster & Media (Titisee-Neustadt) apply.</p>
Press Conference	<ul style="list-style-type: none">• A daily press conference will to be held onsite after the awards ceremony. <u>Location:</u> Ski-jump landing area• Recognizable separations and marking between media representatives and athletes (public relations representative/press office) will be installed and posted.• 1.5m distance will to be maintained.• Areas for media representatives and athletes (public relations representative/press officers) will be clearly marked by signs.

HYGIENE CONCEPT, MEASURES AND PROCEDURES

FIS Ski Jumping World Cup
Titisee-Neustadt 21.01. – 23.01.2022



- Teams and officials are independently responsible for the implementation and organization of additional press conferences. They are to adhere to the guidelines/recommendations of the FIS.
- These are not to take place on the event site.

Additional Information: FIS Covid-19 Media Guidelines

Presentation Ceremony

- The presentation ceremony will place in the ski-jump landing area.
- The winners' podium will be designed in such a way that the minimum distance (1.5 m) between the athletes is maintained.
- The prizes (medals, trophies, etc.) must be disinfected. The handover will take place with gloves on a tablet or pillow. The ceremony will be kept as short as possible.
- Cheering gestures, hugs, handshakes are to be avoided.

5.2.4. Room Descriptions and Room Capacities

In the following section room purpose, and maximum capacities will be defined.

Rooms will be clearly marked with necessary information (access authorization, max. occupancy etc.).

Hand sanitation dispensers will be provided at each room entrance. Every room (as far as possible) must be ventilated for 5 minutes every 25 minutes via open windows/doors.

Athlete Lounge

- Only members of the same sports team will be allowed in the lounge area at any given time.
- All persons in the room must wear an FFP-2 mask (*without valve*)
- Signs will clearly indicate which team may use the room.

HYGIENE CONCEPT, MEASURES AND PROCEDURES

FIS Ski Jumping World Cup
Titisee-Neustadt 21.01. – 23.01.2022



Warm-Up Room Athletes	<ul style="list-style-type: none">• A maximum of 6 athletes + 1 TV-Media representative may be present in the warmup room at any given time.• The minimum distance (1.5 m) must be observed.• Clearly recognizable distance markings will be placed on the benches.• TV-Media representatives must wear an FFP-2 mask (<i>without valve</i>)• The seat and hand contact surfaces will be disinfected with a suitable surface disinfectant between individual training/qualification/competition jump rounds.• Cleaning and disinfection of this area is to be documented.										
Break Room Ski-Jump Hill Team	<ul style="list-style-type: none">• Minimum distance (1.5 m) must be observed.• Break times and length of stay must be planned and coordinated in advance by the Ski-Jump Hill Team.• Stay should be kept as short as possible.• Restrooms in the Ski-Jump Hill Team Area may only be used by members of the team.• Restrooms are to be cleaned and hand contact surface areas disinfected every 60 minutes.• Cleaning and disinfection of the area is to be documented.										
Referee Tower	<ul style="list-style-type: none">• Rooms in the referee tower will be provided with signs on door entrance clearly indicating who (name or company) may enter the room and the max. occupancy:										
	<table border="0"><tr><td>1. Referee Cabin:</td><td>max. 1 Person</td></tr><tr><td>2. Office FIS-Functionaries:</td><td>max. 4 People</td></tr><tr><td>3. Swiss-Timing:</td><td>max. 2 People</td></tr><tr><td>4. Stadium announcer-cabin:</td><td>max. 1 Person</td></tr><tr><td>5. Co-Coaches-Platform:</td><td>Maintain minimum distance <i>(Outdoor area)</i> 1,5 m</td></tr></table>	1. Referee Cabin:	max. 1 Person	2. Office FIS-Functionaries:	max. 4 People	3. Swiss-Timing:	max. 2 People	4. Stadium announcer-cabin:	max. 1 Person	5. Co-Coaches-Platform:	Maintain minimum distance <i>(Outdoor area)</i> 1,5 m
	1. Referee Cabin:	max. 1 Person									
2. Office FIS-Functionaries:	max. 4 People										
3. Swiss-Timing:	max. 2 People										
4. Stadium announcer-cabin:	max. 1 Person										
5. Co-Coaches-Platform:	Maintain minimum distance <i>(Outdoor area)</i> 1,5 m										
<ul style="list-style-type: none">• Restrooms will be cleaned, and hand contact surfaces disinfected every 60 minutes.• Every other sink and urinal will be blocked such that the minimum distance can be maintained.• All common areas, break areas and offices will be cleaned, and the hand contact surfaces disinfected after completion of the day's events.• Cleaning and disinfection of this area is to be documented.											

HYGIENE CONCEPT, MEASURES AND PROCEDURES

FIS Ski Jumping World Cup
Titisee-Neustadt 21.01. – 23.01.2022



Trainer Platform <i>(Outdoor area)</i>	<ul style="list-style-type: none">• While a trainer is on the platform, the minimum distance (1.5 m) must be observed.• An FFP-2 mask (<i>without valve</i>) must be worn.
Organization Building ORGA	<p><u>Organization office:</u></p> <ul style="list-style-type: none">• A maximum occupancy of 2 people. FFP 2 mask (<i>without valve</i>) must be worn. <p><i>The organization office is an important point of contact for many event participants. It serves as an information and communication hub as well as coordination center of the event.</i></p> <p>The following measures must be taken to prevent large groups of people from gathering at, in or near the ORGA office:</p> <ol style="list-style-type: none">1. Each “Group” must designate in advance a contact person charged with direct communication and contact with the ORGA office.2. Person to person contact shall be limited to necessary interactions. Communication will primarily take place via telephone or radio.3. Access to the organization office will be limited to a maximum of 1 additional person (Max. 3 people in total).4. Time spent in the ORGA office for visitors must be kept as short as possible.5. Avoid unnecessary questions and conversations.6. 1.5m distance markers will be placed in the area in front of the ORGA office. <p><u>Doping Control Room:</u></p> <ul style="list-style-type: none">• The doping control room is an area physically separated from the waiting room.• The room is large enough to maintain the minimum distances (1.5 m).• Hand sanitizer will be provided. Handwashing facilities are available.

HYGIENE CONCEPT, MEASURES AND PROCEDURES

FIS Ski Jumping World Cup
Titisee-Neustadt 21.01. – 23.01.2022



	<p><u>Media Room:</u></p> <ul style="list-style-type: none">• FFP-2 masks (<i>without valve</i>) must be worn.• Maximum occupancy 25 Media representatives. Additionally, up to 7 volunteers/helpers/support staff may enter the room.• Hand sanitizers will be positioned at entrances and exits.• Work areas will be arranged to provide a safe minimum distance (1.5m), alternatively physical dividers will be installed.• Walking routes will be clearly marked to avoid cross traffic upon entering and exiting the room.• When a workspace is left, staff will disinfect contact surfaces.• To avoid unnecessary contact between media representatives, drinks, food and snacks will be served by staff.
Step Command Lounge Area	<ul style="list-style-type: none">• Step Command break, warmup and changing area will be in the "Schützenhaus".• The minimum distance (1.5 m) must be observed.• Length of stay should be kept as short as possible.
TV – Media area	<ul style="list-style-type: none">• Hygiene and procedural measures for this area, please refer to the Regulations for Broadcaster & Media concept (<i>Titisee-Neustadt</i>).



Isolation Area	<ul style="list-style-type: none">• A special room will be made available onsite to isolate people with a positive PCR or a suspicion of infection.• If a person shows symptoms of Covid-19 (<i>see point 3.1.2.</i>), they will be immediately isolated.• In the event that isolation becomes necessary, the hygiene officer will coordinate/communicate with the local health department and determine which further measures need to be initiated. <p>Note: Appropriate measures and communication process will be further described in point 6.1. <i>ff. Communication.</i></p> <ul style="list-style-type: none">• In the event it becomes necessary to isolate an infected or a suspected infected person, then special hygiene/protection and disinfection measures will be implemented. <p>Note: Special measures for the isolation area are described further in point 5.3. <i>Cleaning/Disinfection.</i></p>
-----------------------	--

5.2.5. Signage, Directional Markers	
Signage	<ul style="list-style-type: none">• German and English signage will be supplemented by clearly understandable pictograms.• Hygiene rules will be clearly posted at the main entrance, at security zone transitions and in front of buildings.• Special <i>-Safety Zone-/room</i> use regulations will be clearly posted at entrances to these areas.
Directional Markers	<ul style="list-style-type: none">• Walking paths will be arranged and marked such as to minimize contact between “Groups”.• When possible, walking paths will be “one-way”.• At path intersections staff will be deployed to assist with “traffic control”.• Walking paths will be clearly marked with signs and ground markings.• Ground marking will be checked daily and renewed as needed. In case of inclement weather ground marking will be checked more frequently.



5.2.6. Catering

Caterers must adhere to and implement current DEHOGA rules and regulations.

- Catering areas will have “Take away” counters for food and drink.
- Limit time in catering areas to consumption of meals and beverages.
- Distance markings (1.5 m) will be clearly visible.
- The catering staff will wear FFP-2 masks (*without valve*) and gloves.
- Physical barriers will separate catering staff from event staff and participants.

Catering Area Access:

Catering Sport	<ul style="list-style-type: none"> • Teams (athletes and athletic support staff) • Ski-Jump Hill Team (Starting Area) • Inrun Maintenance Squad
Catering Organization Building	<ul style="list-style-type: none"> • Organization Committee (<i>LOC</i>) • Ski-Jump Hill Team (<i>Landing area</i>) • Emergency Medical Personnel • Security • Shuttle drivers
Catering “Schützenhaus”	<ul style="list-style-type: none"> • Distance Measurers • Hill Packers Squad
Catering “Naturfreundehaus”	<ul style="list-style-type: none"> • Security • Shuttle Drivers

5.3. Cleaning/Disinfection

5.3.1. Restrooms/Toilets/WC

Restrooms/Toilets/WC's will be cleaned and disinfected by qualified cleaning staff.

- Hygiene rules and maximum occupancy will be clearly posted at each entrance.
- Every other sink and urinal will be blocked to ensure the 1.5m distance can be maintained.
- Restrooms will be regularly cleaned, and hand contact surfaces disinfected.
- Cleaning and disinfection of this area is to be documented.
- The contracted cleaning service provider will provide must an independent hygiene concept for cleaning/staff processes.
- Cleaning staff will wear FFP-2 masks (*without valve*)

5.3.2. Organizational and Lounge areas

All rooms utilized during the event will be cleaned daily. Room cleaning will be carried out after the days events have been completed and participants have left the areas. All hand contact surfaces will be disinfected with an appropriate surface disinfectant. Cleaning and disinfection of these areas is to be documented.

Note: A cleaning plan/schedule will be provided by the cleaning service provider and attached to the service provider's hygiene concept.

HYGIENE CONCEPT, MEASURES AND PROCEDURES

FIS Ski Jumping World Cup
Titisee-Neustadt 21.01. – 23.01.2022



Organization Building ORGA	<ul style="list-style-type: none">• Due to high volume of visitors, the ORGA Building will undergo more frequent disinfection.• An appropriate surface disinfectant will be used.• Disinfection of these areas is to be documented.
Isolation Room	<ul style="list-style-type: none">• If the isolation room is used by an infected individual (or one with a strong suspicion of infection), the following additional points must be observed:<ol style="list-style-type: none">1. The room may only be entered with protective clothing. FFP-2 mask (<i>without valve</i>), protective goggles, protective suit, gloves.2. The room will be adequately ventilated (open doors and windows).3. Disinfection and cleaning will be carried out by qualified personnel only. All contact surfaces, storage areas, floors and sanitary areas are to be disinfected with an appropriate surface disinfectant.4. All disinfection and cleaning measures will be monitored and checked by Covid-19 Health Coordinator.5. The isolation room may only be released for further use with the approval of the Covid-19 Health Coordinator.

6. COMMUNICATION

6.1. What to do in the event of an infection or suspected infection SARS-CoV-2

In the event of infection or in case of a strong suspicion of an infection, the appropriate reporting structure must be activated, and special measures taken.

Possible scenarios and the measures that are to be taken are described below.

An athlete reports symptoms suspicious for infection
(Outside the event site)

- Athlete is to be isolated immediately (all contact avoided).
- Interaction with appropriately protected (FFP-2 mask *without valve*, protective suit, gloves) medical staff is allowed.
- The Covid-19 health coordinator must be notified immediately. The COVID-19 Health Coordinator in turn will inform the appropriate Health Department.
- The athlete must identify all athletes, sports team members, event staff, volunteers, organizers etc. they have been in contact with.
- Further procedures, evaluations (including PCR tests) will be performed in accordance with the Covid-19 Health Coordinator/Health Department instructions.

Formulation adopted:

Hygiene standards; General regulations of the German Olympic Sports Confederation

Staff/ Volunteer reports symptoms suspicious for infection
(Outside the event site)

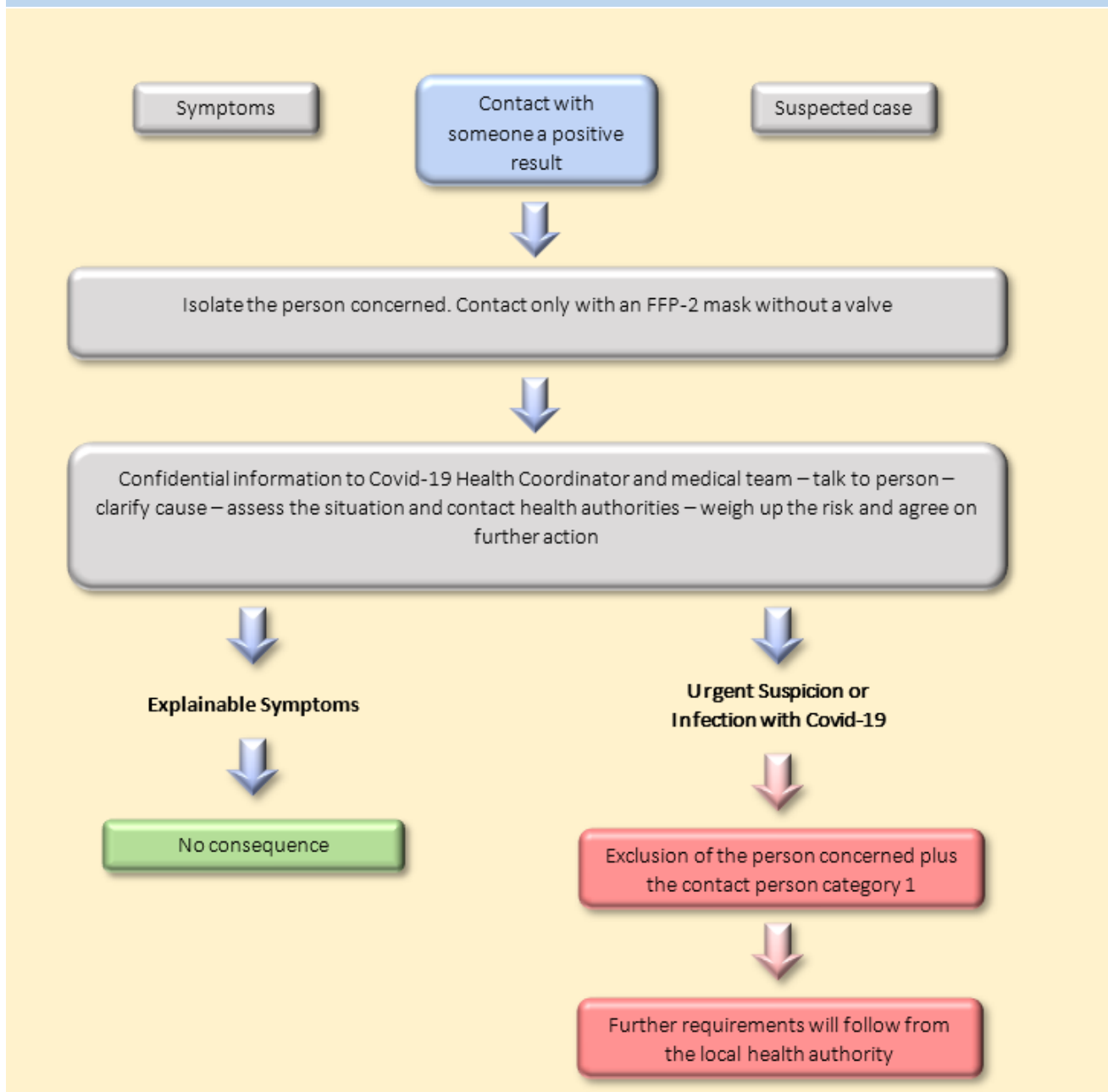
- The Covid-19 health coordinator must be notified immediately.
- The staff member/volunteer must identify all athletes, sports team members, event staff, volunteers, organizers etc. they have been in contact with.
- Further procedures, evaluations (including PCR tests) will be performed in accordance with the Covid-19 Health Coordinator/Health Department.

Formulation adopted:

Hygiene standards; General regulations of the German Olympic Sports Confederation

The following graphic depicts the appropriate reporting chains and procedures to be initiated if an infection or suspected infection occurs during the event.

Infographic based on the guidelines for protection against infection of the German Ski Association e.V.





6.2. Communication process in case of suspected infection/infection with SARS-CoV-2

In the event of a suspected case/infection with SARS-CoV-2, the person concerned or the person responsible must inform the local Covid-19 Health Coordinator as soon as possible. (*For contact details see point 2.2.*) In this case, the Covid-19 Health Coordinator will coordinate further measures.

- All information is to be treated confidentially at every level of the communication process in accordance with German data protection regulations! There is to be no release of confidential data (to any institution, person, person group or media representative) without the prior approval of the appropriate authorities. -

The Covid-19 health Coordinator will immediately contact:

1. *Local health authority/department*
2. *Responsible FIS representative*
3. *Responsible Local Organization Committee representative*
4. *Responsible representative of the impacted team or "Group" as defined in point 5.2.2. Groups and Safety Zones.*

External communication, for e.g., to the media is to take place exclusively through authorized press representatives. Coordination with and prior approval from the FIS and the impacted team(s) or "Person-Groups" concerned is essential before releasing any information.

The Covid-19 Health Coordinator will communicate regularly with those impacted by the situation regarding any and all decisions made by the local health authorities.

The Covid-19 Health Coordinator, in conjunction with the *local health authority*, the *FIS* and the *Local Organizing Committee*, will decide about the further course of the event.

7. APPENDIXES

Appendix 1_Hygiene rules_ Ski Jumping World Cup_TN



HYGIENE- UND SICHERHEITSGESAMTREGELN
HYGIENE- AND SAFETY RULES

 <p>HUSTEN- UND NIESETIKETTE BEACHTEN OBSERVE ETIQUETTE WHEN SNEEZING AND COUGHING</p>	 <p>ABSTAND EINHALTEN MAINTAIN YOUR DISTANCE</p>	 <p>MUND- / NASENSCHUTZ TRAGEN WEAR MOUTH- / NOSE PROTECTION</p>
 <p>RÄUME REGELMÄßIG LÜFTEN VENTILATE ROOMS REGULARLY</p>	 <p>HÄNDE AN EIN- UND AUSGÄNGEN DESINFIZIEREN DISINFECT HANDS AT ALL ENTRANCE AND EXITS</p>	 <p>HÄNDE AUSREICHEND (20 – 30 SEC.) MIT SEIFE WASCHEN WASH HANDS THOROUGHLY WITH SOAP AND WATER</p>
 <p>BEI KRANKHEITSSYMPTOMEN ZU HAUSE BLEIBEN IN CASE OF COVID-19 SYMPTOMS STAY AT HOME</p>	 <p>BITTE HANDELN SIE VERANTWÖRTLICH UND BEACHTEN SIE DIE HINWEISE PLEASE ACT RESPONSIBLY AND OBSERVE THE HYGIENE RULES</p>	

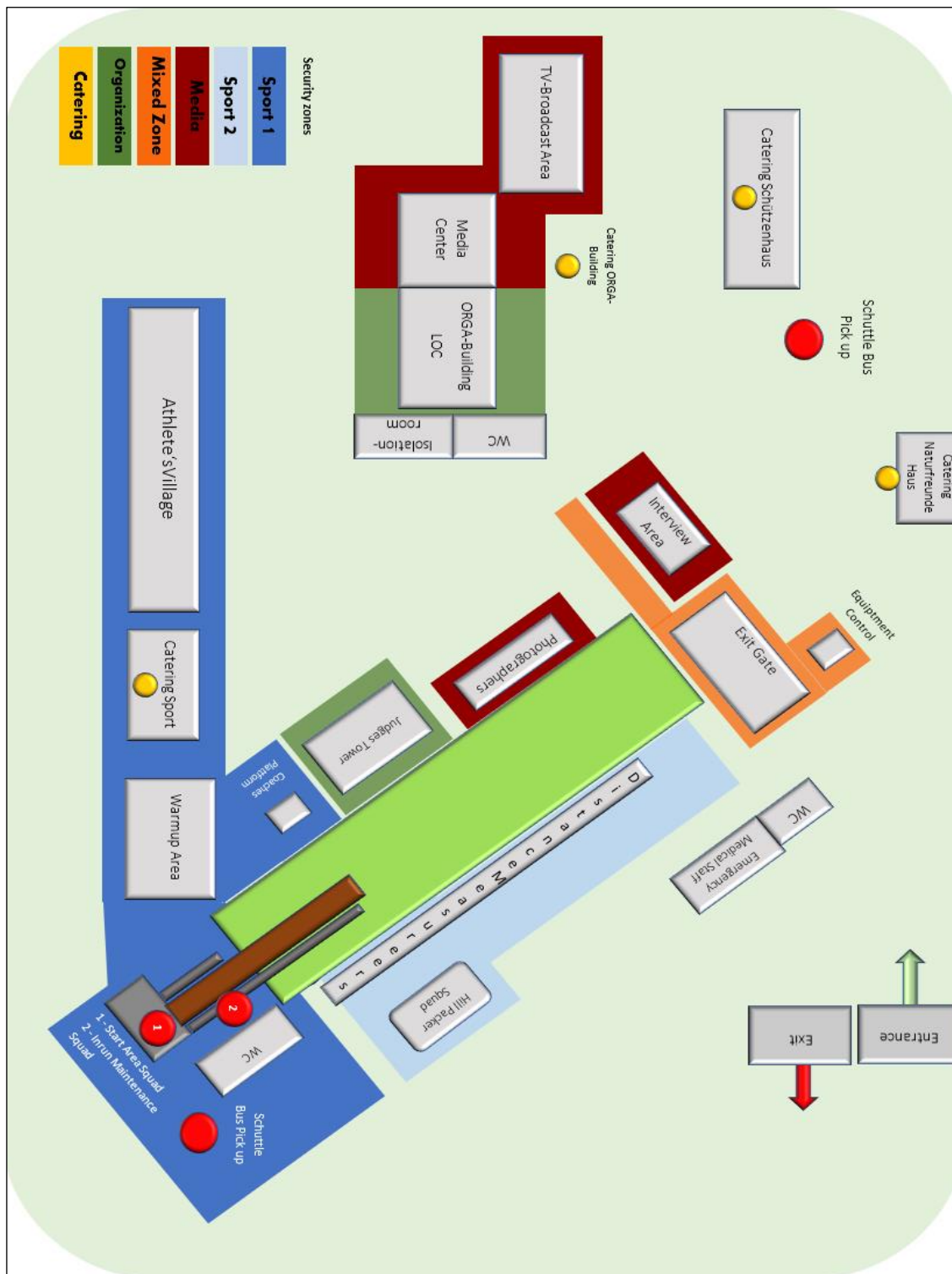
MILLORA CONSULTING
©2022 Millora Consulting GmbH -Alle Rechte vorbehalten-

HYGIENE CONCEPT, MEASURES AND PROCEDURES

Viessmann FIS Ski jumping World Cup
Titisee-Neustadt 21.01. – 23.01.2022



Appendix 2_Location Map_Ski Jumping World Cup_TN



Hygiene and Measures Concept
Viessmann FIS Ski jumping World Cup, Titisee-Neustadt 21.01. - 23.01.2022

VS 1.1 EN

Valid from: 15.01.2022

Seite 37 von 38

HYGIENE CONCEPT, MEASURES AND PROCEDURES

Viessmann FIS Ski jumping World Cup
Titisee-Neustadt 21.01. – 23.01.2022



Appendix 3_Access authorization zones_Ski Jumping World Cup_TN

