

# COVID-19 HANDLING @ THE EVENT



Status: DEC 29, 2021 (subject to changes)

# GENERAL COVID RULES IN SWITZERLAND



- These rules apply generally to everyone in the country:

- Abbreviation explanation:

**3G** **g**eimpft, **g**enesen oder **g**etestet  
stands for:  
vaccinated or recovered or tested

**2G** **g**eimpft oder **g**enesen  
stands for:  
vaccinated or recovered

**2G+** **g**eimpft, **g**enesen und **g**etestet  
stands for:  
vaccinated or recovered and tested \*

\* If the date of your completed vaccination or booster is less than 4½ months ago, you count as 2G+ without having to present an additional test.

**Coronavirus: Federal Council tightens measures** 17.12.2021

Applicable throughout Switzerland from 20 December:

**Stricter certificate requirement indoors**  
Culture, leisure, sports, restaurants, events

→ 2G or voluntary 2G+

Settings where it is not possible to wear masks or be seated (e.g. discos, swimming pools, bars, intensive sports, brass bands)

→ 2G+

Outdoors: Events for over 300 people

→ 3G

3G Vaccinated, recovered or tested    2G Vaccinated or recovered    2G+ Vaccinated/recovered within last 4 months or vaccinated/recovered with negative test    Seating requirement to eat and drink

**Private gatherings**

10 Max. 10 people if at least one person present is unvaccinated or has not had COVID-19

30<sub>2G</sub> Indoors: max. 30 people (2G)

50 Outdoors: max. 50 people

**Requirement to work from home**  
If not possible: masks to be worn if more than one person in room.

**Mask requirement at upper secondary level**

Stricter rules apply in several cantons

Minimize contact    Ventilate regularly    Get vaccinated

Schweizerische Eidgenossenschaft  
Confédération suisse  
Confederazione Svizzera  
Confederaziun svizra  
Swiss Confederation

Bundesrat  
Conseil fédéral  
Consiglio federale  
Cussegl federal  
Federal Council

# TRAVELLING & ENTRY TO SWITZERLAND



- These rules apply generally to all travellers:

<https://www.bag.admin.ch/bag/en/home/krankheiten/ausbrueche-epidemien-pandemien/aktuelle-ausbrueche-epidemien/novel-cov/empfehlungen-fuer-reisende/quarantaene-einreisende.html>

- An **entry form is required**, to be filled out **no earlier than 48h prior to arriving** in Switzerland:

<https://swissplf.admin.ch/formular>

- Official website for Corona matters:

<https://www.bag.admin.ch/bag/en/home/krankheiten/ausbrueche-epidemien-pandemien/aktuelle-ausbrueche-epidemien/novel-cov/situation-schweiz-und-international.html>

## New rules on entering Switzerland

From 20 December

The infographic is set against a dark blue background. It features two horizontal arrows pointing to the right. The top arrow is light blue and labeled 'Vaccinated or recovered'. It contains three circular icons: a document with a checklist, a test tube, and another test tube. Below these icons are the labels 'Complete entry form', 'Present negative test\*', and 'Present negative test\*'. The bottom arrow is dark blue and labeled 'Not vaccinated and not recovered'. It contains three circular icons: a document with a checklist, a test tube, and a test tube with '4-7' written next to it. Below these icons are the labels 'Complete entry form', 'Present negative test\*', and 'Further test\* 4-7 days after entry\*\*'. At the bottom of the infographic, there are two columns of text. The left column is titled 'No test or entry form required for:' and lists 'Professional drivers', 'Cross-border commuters\*\*\*', and 'People from border regions\*\*\*'. The right column is titled 'No test required for:' and lists 'Children under the age of 16', 'People exempted from testing', and 'Medical emergencies'. Below these columns are two circular icons: a globe and a house with a red 'X' over it. The globe icon is followed by the text 'Foreign nationals: Check if you are allowed to enter at www.sem.admin.ch'. The house icon is followed by the text 'Travellers entering Switzerland are not currently required to quarantine.' At the very bottom, there are three footnotes: '\* PCR test (not more than 72 hours old) or rapid antigen test (not more than 24 hours old).', '\*\* Cantonal authority must be notified of the test result.', and '\*\*\* Test and form required when entering by plane or coach.' The Swiss flag and the text 'Schweizerische Eidgenossenschaft', 'Confédération suisse', 'Confederazione Svizzera', and 'Confederaziun svizra' are in the bottom right corner.

**Vaccinated or recovered**

- Complete entry form
- Present negative test\*
- Present negative test\*

**Not vaccinated and not recovered**

- Complete entry form
- Present negative test\*
- Further test\* 4-7 days after entry\*\*

**No test or entry form required for:**

- Professional drivers
- Cross-border commuters\*\*\*
- People from border regions\*\*\*

**No test required for:**

- Children under the age of 16
- People exempted from testing
- Medical emergencies

**Foreign nationals:** Check if you are allowed to enter at [www.sem.admin.ch](http://www.sem.admin.ch)

Travellers entering Switzerland are **not currently required to quarantine.**

\* PCR test (not more than 72 hours old) or rapid antigen test (not more than 24 hours old).  
\*\* Cantonal authority must be notified of the test result.  
\*\*\* Test and form required when entering by plane or coach.

Schweizerische Eidgenossenschaft  
Confédération suisse  
Confederazione Svizzera  
Confederaziun svizra

# BEFORE ENTRY

For current entry requirements, the regulations of the Federal Office of Public Health & the State Secretariat for Migration apply. The following points must be completed before entering the country:

## **Rules for vaccinated, recovered, not vaccinated & not recovered persons:**

- Entry form: Fill out this entry form before your departure
- On entry, it requires a PCR test (younger than 48h) or an antigen – rapid test (younger than 24h). Exemptions can be found here:

[Entering Switzerland \(admin.ch\)](#)

- **Have your FIS Passport information updated before arriving in Laax.** This includes:
  - Record of test data & result
  - Record of previous infection
  - Health questionnaire
  - Vaccination status or proof of positive test
  - Negative PCR test which is less than 48 hours old at the time of check-in

**All documentation must be uploaded at least 12 hours before checking in!**

# BEFORE ENTRY



## Rules for vaccinated or recovered persons

- Some foreign vaccination certificates are not recognized in Switzerland. You can find countries exempted from this rule [here](#).
- For all other countries a **certificate conversion** should be applied for at least **10 days before entering Switzerland**. All approved vaccines for certificate conversion can be found [here](#).
- **Your vaccination certificate must be uploaded on the Swiss "COVID certificate" app: COVID Certificate – Apps bei Google Play**
- For all other vaccines, the rules of "not vaccinated and not recovered" apply.

## Rules for not vaccinated & not recovered persons

- 4-7 days after entry, the cantonal authority must be notified again of a PCR test or antigen rapid test in form of a covid test certificate or positive test result:
- => [Online Form Graubünden](#)

# AFTER ENTRY

- You have **not been vaccinated & have not recovered**? Then you must take another PCR test or daily rapid antigen test. This applies to persons 16 years of age & older.
- For entrants who **leave again before day 7** (& stay 6 nights), another PCR or rapid antigen test is not mandatory, but recommended. The test result & the entry form number or a copy of the contact card must be reported to the canton.

# COVID RULES FOR ATHLETES & TEAMS

- **Health & protection of all participants are our top priority!** All safety measures are in full compliance with the laws & guidelines of the Swiss government, FIS & Swiss Ski.
- In application of the latest FIS Covid-19 World Cup Risk Management & Testing Protocol (Dec. 26, 2021) various groups of people are distinguished:

**Red Group** (same as season 2020/21): all persons travelling with the World Cup Tour or in direct contact with it. These are all **athletes, coaches, support, service & FIS working staff**.

# COVID RULES FOR ATHLETES & TEAMS



- For receiving accreditation to the LAAX OPEN 2022, all members of the Red Group must:
  - a) Make their **own arrangements** for meeting the demanded requirements for entering Switzerland. Currently there are no countries defined as risk countries to be arriving from. More details on the official website here:  
  
<https://www.bag.admin.ch/bag/en/home/krankheiten/ausbrueche-epidemien-pandemien/aktuelle-ausbrueche-epidemien/novel-cov/empfehlungen-fuer-reisende/quarantaene-einreisende.html>
  - b) Have their **FIS PASSPORT info updated 12h prior to arrival** in Laax
  - c) **Present a negative PCR test** (younger than 48h) at the check-in in Laax
  - d) **If not vaccinated**, not vaccinated with a vaccine not accepted in Switzerland or recovered: after expiration of the presented PCR test, take a **daily follow up antigen test**. This can be done at the LAAX OPEN Covid Center (Parking area next to Check-In).
  - e) **Respect & implement** the rules for staying in the contest & take responsibility for themselves.
- For regular accurate updates please consult the **RED GROUP MICROSITE**. It contains all the need-to-know information related to COVID-19 & the event & is your prime source of information:  
<https://open.laax.com/red-group>

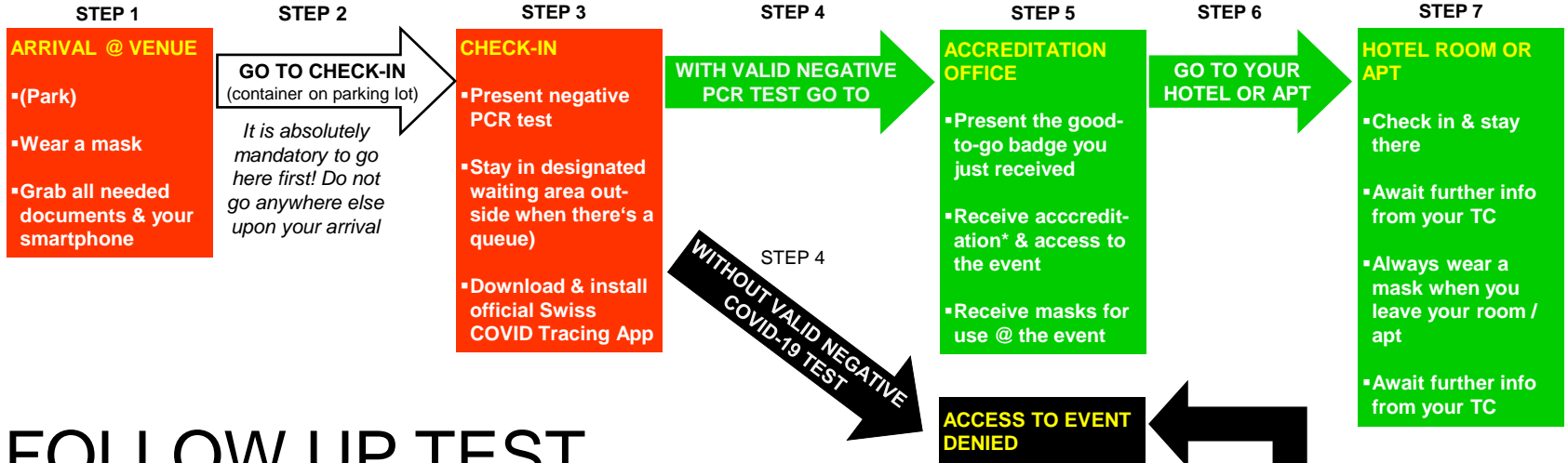
# COVID RULES FOR ATHLETES & TEAMS



- **The red group is strictly separated** & may not be mixed with others (**FIS bubble concept**, with own gondolas to access the mountain & locations etc.). Various safe areas & procedures are defined for members of the red group => **RED ZONES**
- **Masks are strictly mandatory** during the entire event (in- & outdoors), except while training or competing (on-course). Masks may only be removed when actually seated & having a meal, while as the mask obligation applies for going to & leaving the table.
- As a consequence of the FIS protocol & bubble concept, **anyone seeking attendance & access to the Red Zones** (contest areas, riders lounge etc.) **needs to inscribe as part of a national team**. The **event organizer does not grant red group accreditation to individuals**, as all athletes, coaches & other team members need to be registered (FIS PASSPORT) & comply with Covid safety obligations requested by the FIS, for admission.
- All other persons involved in the event, namely the organizing committee & their working crews, resort employees & event staff, volunteers, technicians & services providers, sponsors, media representatives, broadcasters, presenters & VIP guests, are in separate groups with according accreditations, & are advised not to mingle.

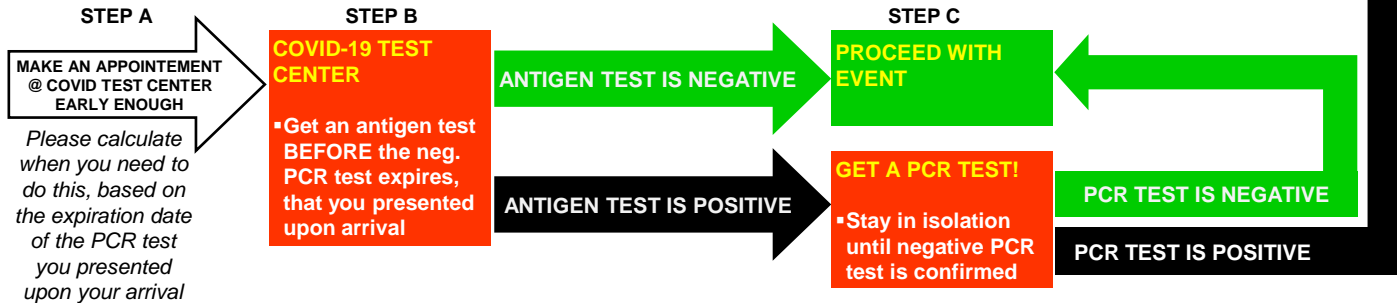


# ACCREDITATION RED GROUP (opens on Monday, Jan.10, 2022, 12pm)



## FOLLOW UP TEST

FOR THOSE NOT VACCINATED OR VACCINATED WITH A VACCINE NOT ACCEPTED IN SUI



# SWISS COVID CERTIFICATE (applicable for 16 years old & older)



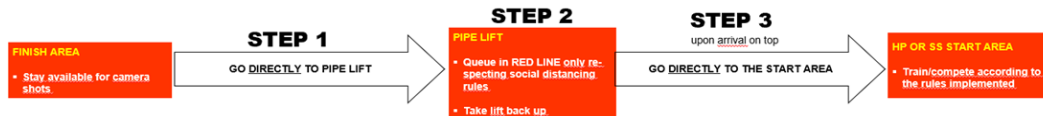
- If you are **vaccinated** please make sure you have a **certificate which is valid** in Switzerland. A Swiss certificate can be requested for the following vaccines:
  - Pfizer/BioNTech (BNT162b2 / Comirnaty® / Tozinameran)
  - Moderna (mRNA-1273 / Spikevax / COVID-19 vaccine Moderna)
  - AstraZeneca (AZD1222 Vaxzevria®/ Covishield™)
  - Janssen / Johnson & Johnson (Ad26.COV2.S)
  - Sinopharm / BIBP (SARS-CoV-2 Vaccine (Vero Cell))
  - Sinovac (CoronaVac)
  - COVAXIN®
  - Novavax (NVX-CoV2373/ Nuvaxovid™/ Covovax™)

Please note that **this list may change** between now & the event, based on the definition of the Swiss authorities.

- For further information please go to the national Covid certificate application platform:  
**[www.covidcertificate-form.admin.ch/foreign](http://www.covidcertificate-form.admin.ch/foreign)**

# DURING YOUR STAY AT THE EVENT

## GOING FROM HALFPIPE FINISH AREA BACK TO THE START



## GOING FROM SLOPESTYLE FINISH AREA BACK TO THE START



## LEAVING THE MOUNTAIN, GOING BACK DOWN TO THE VALLEY

Riders & teams are recommended to ride down to the rocksresort, as this is the safest version with regard to staying away from people.

Upon arrival in the valley, go directly to your hotel room or apartment.

Please note that the main gondola has no 'rider & teams only' times scheduled for taking you down to the valley (medical emergencies only). The only way down with transportation is the 4 seat chairlift to Curnius where you can change to the bubbles that will take you to the rocksresort. Should you do this, pls. follow these steps:



# IN CASE OF SYMPTOMS

- Affected person goes into immediate self-isolation
- **Report to your team leader** or division manager
- **Report to Covid-19 Health Coordinator** (+41 81 927 98 39)
- **Conduct PCR test**  
negative result: person may return to the team  
positive result: cantonal authority decides on departure or quarantine

# TESTING

- Should you need to take a **fresh PCR test on your way to the event**, here are a few places:
  - Var. test locations in the region are listed on the Laax website: [www.flimslaax.com/en/covid-19](http://www.flimslaax.com/en/covid-19)
  - Test Center Nordbuenden +41 81 256 72 07  
(located @ county hospital Chur) [www.ksgr.ch/covid-19-testcenter.aspx](http://www.ksgr.ch/covid-19-testcenter.aspx)
  - Pill Pharmacy Grischuna: [www.pill.ch/standorte/pill-apotheke-grischuna.html](http://www.pill.ch/standorte/pill-apotheke-grischuna.html)  
(PCR tests only possible on weekdays until 3pm)

We highly recommend to make appointments in order to economize your time!

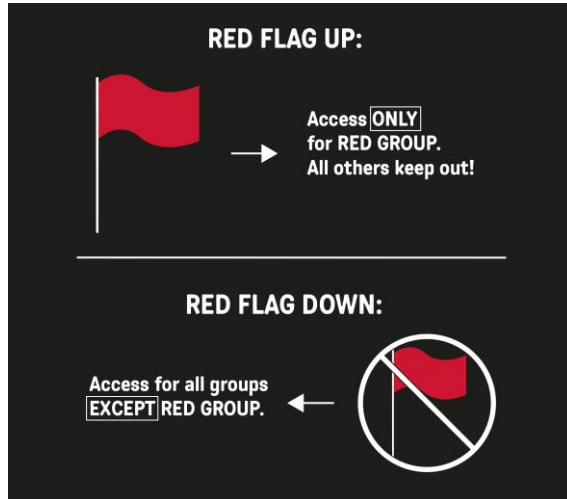
- If you are **not vaccinated, vaccinated with a vaccine not accepted in SUI or recovered**, you will have to take a **follow up test at the event, in order to stay in the contest.**

The follow up test is due upon expiration of the PCR test presented at your arrival. We advise you to **make an arrangement** for this already upon your initial check-in **at the Covid Test Center**

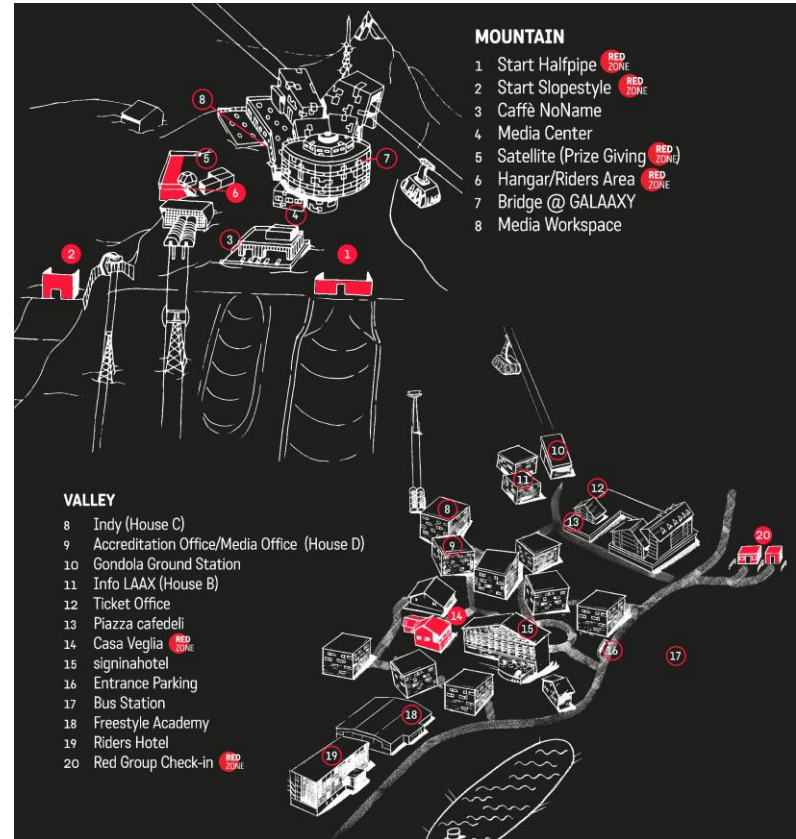
- PCR test: approx. 24h until results are submitted - valid 48h
  - Rapid antigen test: approx. 1h until result transmission - valid 24h
- There is a **test center installed onsite**, located next to Check-In.

# RED ZONES

- Various safe areas for athletes & their associates are defined as RED ZONES.
- During times of preparation by event crews, the Red Zones are not accessible for the Red Group. This is indicated onsite with a red flag:



- **TC meetings** are held **virtually**



# COVID RULES FOR ALL OTHER ATTENDEES



- For all other persons attending the event (working crews, volunteers, media, federation delegates, sponsors etc.) **accreditation is granted only upon presentation of a valid 3G Covid certificate.** This must be valid throughout the entire date (=> check expiration date)
- **Masks must be worn in all indoor locations & in all gondolas.**
- **Red Zones are generally access-banned** for all other accredited persons. Exceptions are kept to the necessary minimum & only granted when inevitable, such as to staff running trainings/contests, media production crews, catering staff & technicians, who need to fulfill a task in the Red Zone.  
**When working in a Red Zone, wearing a FFP2 mask.**
- In publically accessible areas, as well as in all catering & gastronomy areas, the Covid safety measures which apply there are to be strictly followed.
- For visiting restaurants, bars & clubs, **a valid 2G or 2G+ Covid certificate & ID need to be presented** at the entrance.
- Please note that, according to the Swiss government & county's Covid rules, **consuming food & drinks in an(y) indoor location always requires 2G** as a standard (**also for the Red Group!**). Persons with 3G certificates generally have no access to indoor F&B places. **The only exception are (actually competing) athletes:** they are allowed to consume in their designated locations (such as the Hangar during the day & Casa Veglia for dinners).

# FURTHER MEASURES @ THE EVENT



- The event organizer has been advised by the health authorities to best possible prevent large crowd gatherings. While **spectators & visitors are generally allowed & welcome**, certain standards shall be reduced &/or cancelled (such as no giant screen or live DJs @ rocksresort).
- During the day the resort is generally open to all guests with no certificate requirement (outdoor). **For the Halfpipe Finals on Saturday evening**, when the mountain is normally already closed, spectators with **3G certificates** are allowed. A certificate examination is conducted on site.
- For **indoor activities a 2G certificate** is the mandatory standard, in some cases extended to 2G+:

## **Riders Club**

Parties take place & require 2G+ for access

## **Riders Lobby**

No parties

## **Indy & Legna Bar**

Currently 2G mandatory (which allows consumption only when seated). In evaluation is the extension to 2G+ which would allow normal bar activities & parties. Final decision not to be expected until after experiencing the Xmas holiday period.

## **Rockslounge**

2G standard, activities as planned by Swatch (with outdoor bar)



# CONTACTS



• Covid Hotline LAAX OPEN 2022

Tel +41 81 927 98 39

• LAAX OPEN Accreditation Office

Tel +41 81 927 90 66

• Covid Task Force Leader

Seraina Barmettler

seraina.barmettler@laax.com

Tel +41 81 927 70 78

• Swiss Ski Medical Doctor

Dr. Stefan Fröhlich

stefan.froehlich@balgrist.ch

Tel +41 78 778 03 06

